

30-025-28426

## NEW MEXICO OIL CONSERVATION COMMISSION

Form C-101  
Revised 1-4-65

NO. OF COPIES RECEIVED

DISTRIBUTION

SANTA FE

FILE

U.S.G.S.

LAND OFFICE

OPERATOR

5A. Indicate Type of Lease

STATE ☒FEE ☐5. State Oil & Gas Lease No.  
B-1520

## APPLICATION FOR PERMIT TO DRILL, DEEPEN, OR PLUG BACK

1a. Type of Work

DRILL ☒DEEPEN ☐PLUG BACK ☐

b. Type of Well

OIL  
WELL ☐GAS  
WELL ☐

OTHER

Water Injection

SINGLE  
ZONE ☒MULTIPLE  
ZONE ☐

7. Unit Agreement Name

8. Farm or Lease Name

Bridges-State

9. Well No.

185

10. Field and Pool, or Wildcat

Vacuum

2. Name of Operator

Mobil Producing TX. &amp; N.M. Inc.

3. Address of Operator

Nine Greenway Plaza, Suite 2700, Houston, TX 77046

4. Location of Well

UNIT LETTER

E

LOCATED

2628

FEET FROM THE

North

LINE

100'

West

25

17S

34E

AND

FEET FROM THE

LINE OF SEC.

TWP.

RGE.

NMPM

12. County

Lea

19. Proposed Depth

4900'

19A. Formation

Grayburg-SanAndres

20. Rotary or C.T.

Rotary

21. Elevations (Show whether DF, RT, etc.)

4003'-Ground

21A. Kind &amp; Status Plug. Bond

Blanket - On file

21B. Drilling Contractor

Unknown

22. Approx. Date Work will start

As soon as possible

## PROPOSED CASING AND CEMENT PROGRAM

SIZE OF HOLE	SIZE OF CASING	WEIGHT PER FOOT	SETTING DEPTH	SACKS OF CEMENT	EST. TOP
12 1/2"	8-5/8"	24# - K-55	0 - 1700'	1. Circulate	Surface
7-7/8"	5 1/2"	14# - K-55	0 - 4900'	2. Circulate	Surface

(1) Class C+2% CaCl<sub>2</sub> + 1/2#/sx. FC.

(2) Lead: Class C+2% Gel + Salt + 1/4#/sx.FC. mixed at 11.2 ppg.

Tail: Class C+2%CaCl<sub>2</sub> + 1/2#/sx. mixed at 12.4 ppg.

APPROVAL VALID FOR 180 DAYS

PERMIT EXPIRES 4-13-84

UNLESS DRILLING UNDERWAY

## BLOWOUT PREVENTER PROGRAM:

Gasing String

Equip. Size &amp; Series

No. &amp; Type

Test Pressure PSI

Surface

9" x 3000#

1 Master Gate

3000

2 pipe rams &amp;

and rotating head

Choke Manifold

2-1/16" x 3000#

Single

3000

Unorthodox location granted with NMOCD Order R-7361, Dated September 30, 1983

IN ABOVE SPACE DESCRIBE PROPOSED PROGRAM: IF PROPOSAL IS TO DEEPEN OR PLUG BACK, GIVE DATA ON PRESENT PRODUCTIVE ZONE AND PROPOSED NEW PRODUCTIVE ZONE. GIVE BLOWOUT PREVENTER PROGRAM, IF ANY.

I hereby certify that the information above is true and complete to the best of my knowledge and belief.

Signed A.D. Bond A.D. Bond Title Reg. Engrng. Coordinator II Date October 5, 1983

(This space for Signature of EDDIE SEAY)

APPROVED BY OIL & GAS INSPECTOR TITLE DATE OCT 13 1983

CONDITIONS OF APPROVAL, IF ANY:

NEW MEXICO OIL CONSERVATION COMMISSION  
WELL LOCATION AND ACREAGE DEDICATION PLAT

Form C-102  
Supersedes C-128  
Effective 1-1-65

All distances must be from the outer boundaries of the Section.

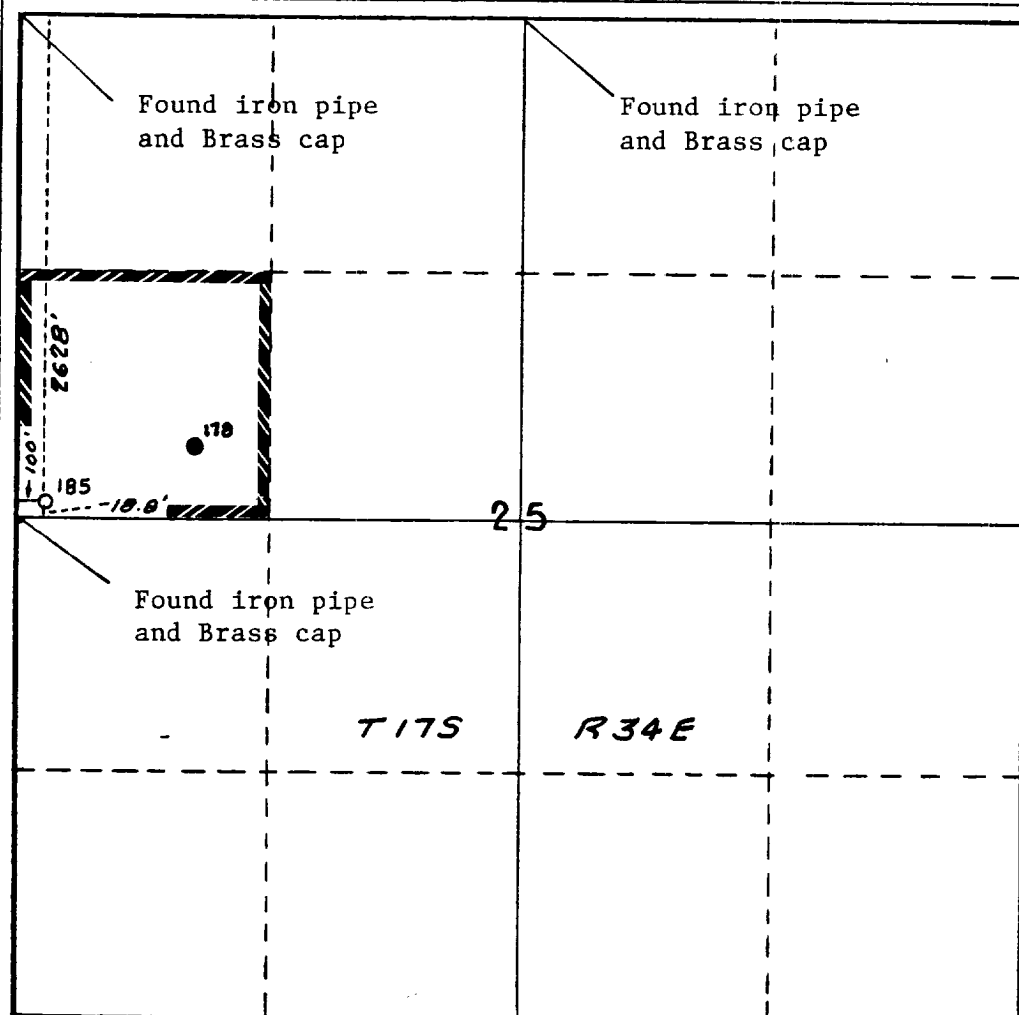
Operator Mobil Producing TX. & N.M. Inc.			Lease Bridges-State		Well No. 185
Unit Letter E	Section 25	Township 17S	Range 34E	County Lea	
Actual Footage Location of Well: 2628 feet from the North line and 100 feet from the West line					
Ground Level Elev. 4003'	Producing Formation Grayburg - San Andres		Pool Vacuum	Dedicated Acreage: 40 ac. (2 wells) Acres	

1. Outline the acreage dedicated to the subject well by colored pencil or hachure marks on the plat below.
2. If more than one lease is dedicated to the well, outline each and identify the ownership thereof (both as to working interest and royalty).
3. If more than one lease of different ownership is dedicated to the well, have the interests of all owners been consolidated by communitization, unitization, force-pooling, etc?

☐ Yes ☐ No If answer is "yes," type of consolidation \_\_\_\_\_

If answer is "no," list the owners and tract descriptions which have actually been consolidated. (Use reverse side of this form if necessary.) \_\_\_\_\_

No allowable will be assigned to the well until all interests have been consolidated (by communitization, unitization, forced-pooling, or otherwise) or until a non-standard unit, eliminating such interests, has been approved by the Commission. S89°45'W-2634.5'



CERTIFICATION

I hereby certify that the information contained herein is true and complete to the best of my knowledge and belief.

Name  
*A.D. Bond* A.D. Bond  
Position  
Reg. Engrng. Coordinator II  
Company  
Mobil Producing TX. & N.M. Inc.  
Date  
February 11, 1983

I hereby certify that the well location shown on this plat was plotted from field notes of actual surveys made by me or under my supervision, and that the same is true and correct to the best of my knowledge and belief.

Date Surveyed  
1-26-83  
Registered Professional Engineer  
and/or Land Surveyor

H.A. Carson, Jr.

Certificate No.  
5063

N 0° 05' W - 2646.8'

RECEIVED  
OCT 7 1983  
O.C.D.  
HOBBS OFFICE