

NO. OF COPIES RECEIVED	
DISTRIBUTION	
SANTA FE	
FILE	
U.S.G.S.	
LAND OFFICE	
OPERATOR	

5A. Indicate Type of Lease	
STATE <input checked="" type="checkbox"/>	FEE <input type="checkbox"/>
5. State Oil & Gas Lease No.	
LG2616	

APPLICATION FOR PERMIT TO DRILL, DEEPEN, OR PLUG BACK

1a. Type of Work			7. Unit Agreement Name		
b. Type of Well DRILL <input checked="" type="checkbox"/> DEEPEN <input type="checkbox"/> PLUG BACK <input type="checkbox"/> OIL WELL <input checked="" type="checkbox"/> GAS WELL <input type="checkbox"/> OTHER <input type="checkbox"/> SINGLE ZONE <input type="checkbox"/> MULTIPLE ZONE <input type="checkbox"/>			8. Farm or Lease Name New Mexico State		
2. Name of Operator CALATEX EXPLORATION, INC.			9. Well No. #1		
3. Address of Operator 16200 Dallas Parkway, Suite 150, Dallas, TX 75248			10. Field and Pool, or Wildcat Wildcat		
4. Location of Well UNIT LETTER <u>Q2</u> LOCATED <u>2,310'</u> FEET FROM THE <u>North</u> LINE AND <u>990</u> FEET FROM THE <u>West</u> LINE OF SEC. <u>29</u> TWP. <u>17S</u> RGE. <u>36E</u> NMPM			12. County LEA		
21. Elevations (Show whether DF, RT, etc.) 3,864' GL			21A. Kind & Status Plug. Bond One - Well		21B. Drilling Contractor Cactus (Probably)
19. Proposed Depth 5,200'			19A. Formation San Andres		20. Rotary or C.T. Rotary
22. Approx. Date Work will start October 27, 1983					

PROPOSED CASING AND CEMENT PROGRAM

SIZE OF HOLE	SIZE OF CASING	WEIGHT PER FOOT	SETTING DEPTH	SACKS OF CEMENT	EST. TOP
11"	8 5/8"	24	400	200	Surface
7 7/8"	4 1/2"	9.5	5,200	See Note	

Cement Program - Production String

4 1/2" casing will be cemented in two stages, utilizing a formation packer shoe @ 5,200' and a Multiple State Cementer at \pm 1,900'.

1st Stage: 300 SXS with estimated cement top at 4,200'
2nd Stage: 450 SXS with cement circulated to surface.

Blowout Prevention Program

10" 900
3,000#

APPROVAL VALID FOR 180 DAYS
PERMIT EXPIRES 4-30-79
UNLESS DRILLING UNDERWAY.

IN ABOVE SPACE DESCRIBE PROPOSED PROGRAM: IF PROPOSAL IS TO DEEPEN OR PLUG BACK, GIVE DATA ON PRESENT PRODUCTIVE ZONE AND PROPOSED NEW PRODUCTIVE ZONE. GIVE BLOWOUT PREVENTER PROGRAM, IF ANY.

I hereby certify that the information above is true and complete to the best of my knowledge and belief.

Signed Ned G. Mahoney Title President Date October 11, 1983
(This space for State Use)

ORIGINAL SIGNED BY JERRY SEXTON

APPROVED BY DISTRICT 1 SUPERVISOR TITLE DATE OCT 24 1983

CONDITIONS OF APPROVAL, IF ANY:

RECEIVED
OCT 24 1983
O.C.D.
HOBBS OFFICE

**NEW MEXICO OIL CONSERVATION COMMISSION
WELL LOCATION AND ACREAGE DEDICATION PLAT**

Form C-102
Supersedes C-128
Effective 1-1-65

All distances must be from the outer boundaries of the Section

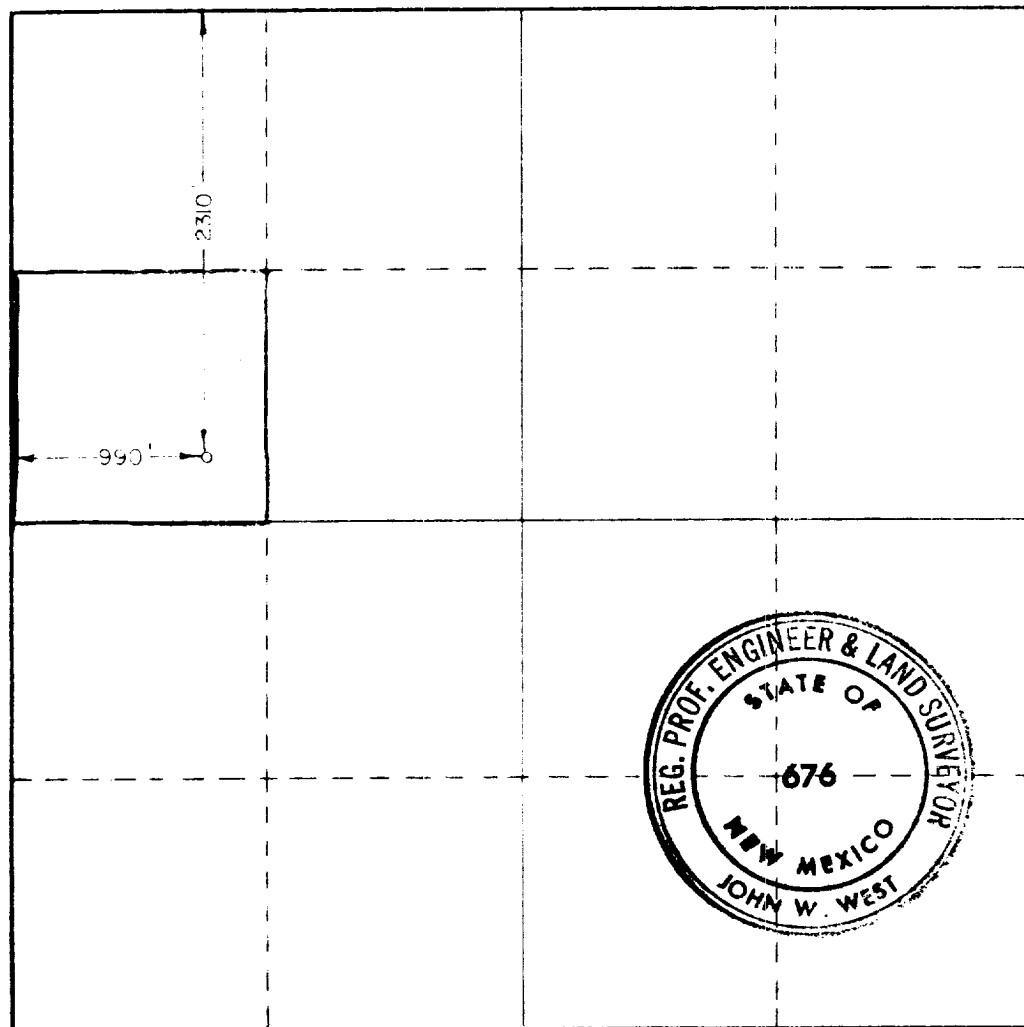
Operator CALATEX EXPLORATION INC.			Lease STATE <i>New Mexico State</i>		Well No. 1
Grid Letter E	Section 29	Township 17 SOUTH	Range 36 EAST	County LEA	
Actual Footage Location of Well:					
2310		feet from the NORTH	line and	990	feet from the WEST line
Ground Level Elev. 3360.9	Producing Formation San Andres		Pool <i>Vacuum Gray, Sa</i>	Dedicated Acreage: 40 Acres	

1. Outline the acreage dedicated to the subject well by colored pencil or hatchure marks on the plat below.
2. If more than one lease is dedicated to the well, outline each and identify the ownership thereof (both as to working interest and royalty).
3. If more than one lease of different ownership is dedicated to the well, have the interests of all owners been consolidated by communitization, unitization, force-pooling, etc?

☐ Yes ☐ No If answer is "yes," type of consolidation _____

If answer is "no," list the owners and tract descriptions which have actually been consolidated. (Use reverse side of this form if necessary.) _____

No allowable will be assigned to the well until all interests have been consolidated (by communitization, unitization, forced-pooling, or otherwise) or until a non-standard unit, eliminating such interests, has been approved by the Commission.



CERTIFICATION

I hereby certify that the information contained herein is true and complete to the best of my knowledge and belief.

Name *Med G. Mahfouz*
Position **President**

Company **Calatex Expl., Inc.**

Date **October 19, 1983**

I hereby certify that the well location shown on this plat was plotted from field notes of actual surveys made by me or under my supervision, and that the same is true and correct to the best of my knowledge and belief.

Date Surveyed **SEPTEMBER 16, 1983**

Registered Professional Engineer and/or Land Surveyor

Ronald J. Eidson

Certificate No. **JOHN W. WEST, 676**
RONALD J. EIDSON, 3239



RECEIVED
OCT 24 1983
O.C.B.
HOBBS OFFICE

Garrett Bank for