

NO. OF COPIES RECEIVED	
DISTRIBUTION	
SANTA FE	
FILE	
U.S.G.S.	
LAND OFFICE	
OPERATOR	

API No. 30-025-28439

5A. Indicate Type of Lease

STATE ☒ FEE ☐

5. State Oil &amp; Gas Lease No.

B-4118

## APPLICATION FOR PERMIT TO DRILL, DEEPEN, O. PLUG BACK

1a. Type of Work

DRILL ☒DEEPEN ☐PLUG BACK ☐

7. Unit Agreement Name

8. Farm or Lease Name

Lea

9. Well No.

32

10. Field and Pool, or Wildcat

Vacuum (Gb/SA)

12. County

Lea

2. Name of Operator

(Successor to General American Oil Company

Phillips Oil Company

of Texas by Merger 3-8-83)

3. Address of Operator

Room 401, 4001 Penbrook St., Odessa, Texas 79762

4. Location of Well

UNIT LETTER N LOCATED 660 FEET FROM THE south LINEAND 1980FEET FROM THE west LINE OF SEC. 30 TWP. 17-S RGE. 34-E

19. Proposed Depth

4900'

19A. Formation

Grayburg/San Andres Rotary

20. Rotary or C.T.

21. Elevations (Show whether DF, RT, etc.)

4085 GR (unprepared)

21A. Kind &amp; Status Plug. Bond

Blanket

21B. Drilling Contractor

Advise later

22. Approx. Date Work will start

upon approval

23.

## PROPOSED CASING AND CEMENT PROGRAM

SIZE OF HOLE	SIZE OF CASING	WEIGHT PER FOOT	SETTING DEPTH	SACKS OF CEMENT	EST. TOP
12 1/4"	8 5/8"	24# K-55	350'	350 sx C1 'C' 2" / circ. @ surface	
7 7/8"	4 1/2"	11.6# N-80	4800'	Caliper vol. plus 30 % excess	circ. @ surface

TLW w/10% DD, 12# sx salt, 1/4# sx cellophane, 3# sx gilsonite followed by 250 sx cl 'H', 5# sx salt.

APPROVAL VALID FOR 180 DAYS  
PERMIT EXPIRES 4-20-84  
UNLESS DRILLING UNDERWAY

BOP Equipment 7-9 or 7-10 (See attached sketch)

N ABOVE SPACE DESCRIBE PROPOSED PROGRAM: IF PROPOSAL IS TO DEEPEN OR PLUG BACK, GIVE DATA ON PRESENT PRODUCTIVE ZONE AND PROPOSED NEW PRODUCTIVE ZONE, SIZE BLOWOUT PREVENTER PROGRAM, IF ANY.

I hereby certify that the information above is true and complete to the best of my knowledge and belief.

Signed [Signature] W. J. Mueller Title Sr. Engineering Specialist Date 10-19-83

(This space for State Use)

ORIGINAL SIGNED BY JERRY SEXTON

APPROVED BY DISTRICT 1 SUPERVISOR

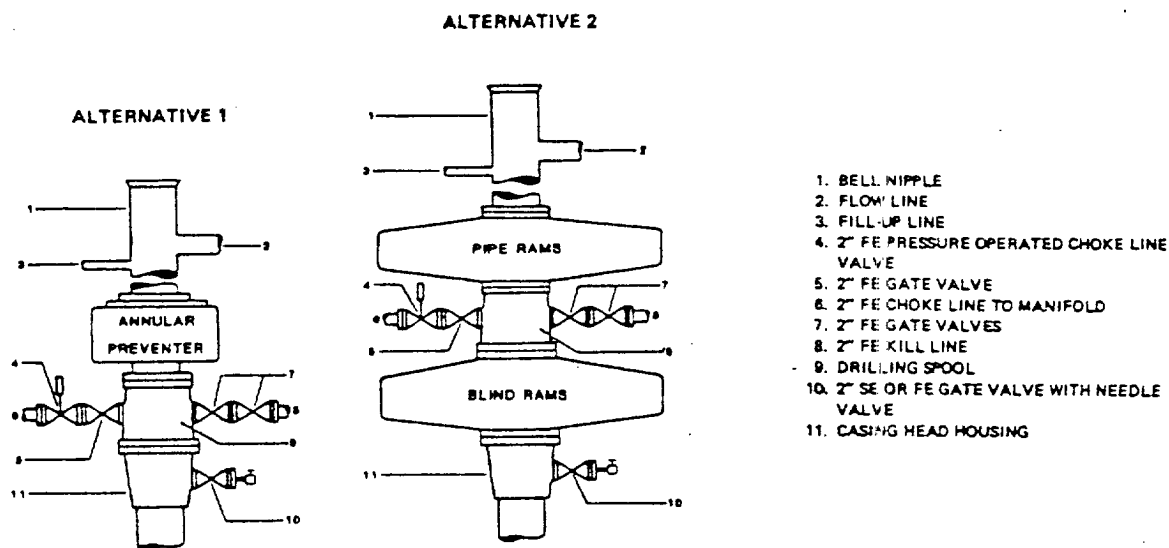
TITLE

DATE

OCT 24 1983

CONDITIONS OF APPROVAL, IF ANY:

# FIELD PRACTICES AND STANDARDS



NOTE: THE DRILLING SPOOL MAY BE LOCATED BELOW BOTH SETS OF RAMS IF A DOUBLE PREVENTER IS USED AND IT DOES NOT HAVE SUITABLE OUTLETS BETWEEN RAMS

Figure 7-9. Standard Hydraulic Blowout Preventer Assembly (2 M or 3 M Working Pressure) Alternative 1

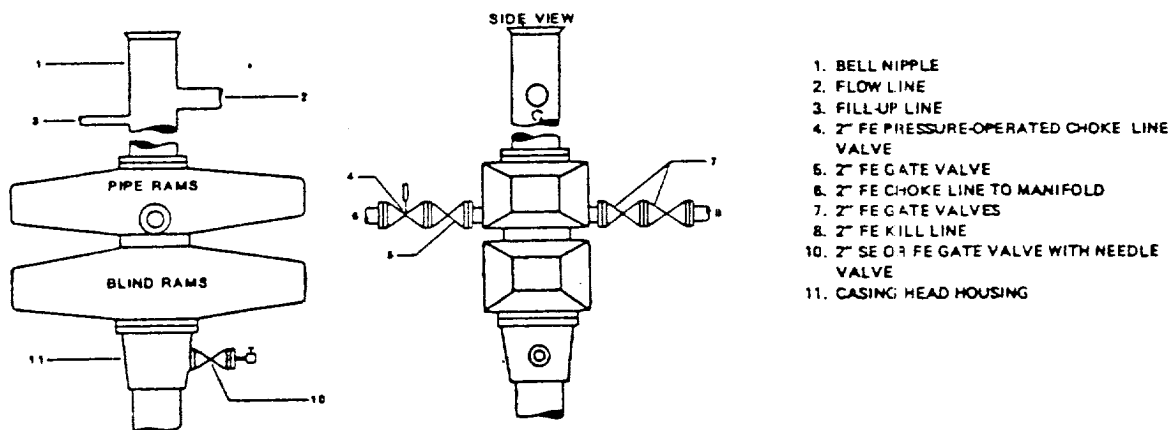


Figure 7-10. Standard Hydraulic Blowout Preventer Assembly (2 M or 3 M Working Pressure) Alternative 3 (without Drilling Spool)

MEXICO OIL CONSERVATION COMMISSION  
WELL LOCATION AND ACREAGE DEDICATION PLAT

Form C-102  
Supersedes C-128  
Effective 1-1-65

All distances must be from the outer boundaries of the Section

Operator Oil (successor to General American Oil Co. by merger 3-8-83) PHILLIPS <del>XXXXXXXXXX</del> CO. LEA					Well No. 32
Section N	Section 30	Township 17 SOUTH	Range 34 EAST	County LEA	

Actual Portage Location of Well:

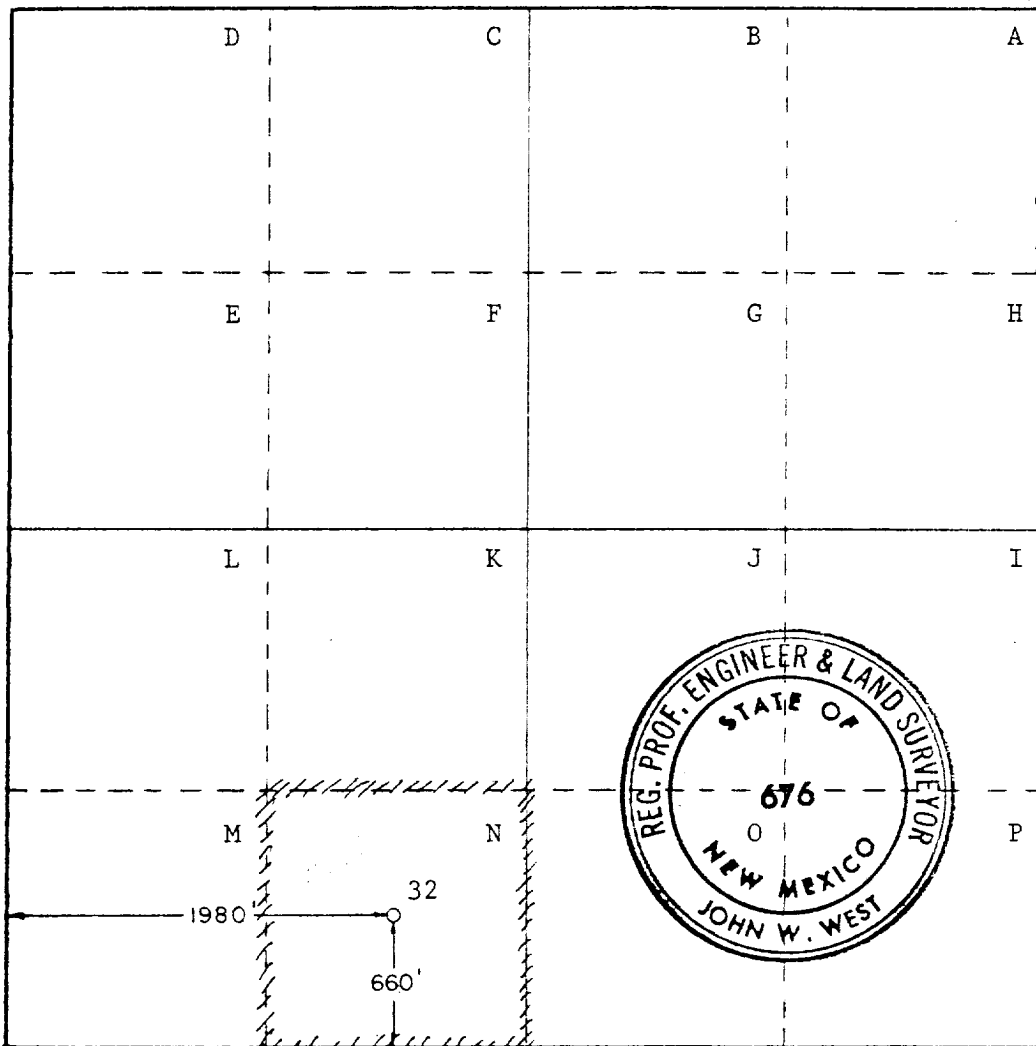
660	feet from the	SOUTH	line and	1980	feet from the	WEST	line
Ground Level Elev. 4085.0	Producing Formation Grayburg/San Andres		Pool Vacuum Gb/San Andres		Dedicated Acreage: 40		

- Outline the acreage dedicated to the subject well by colored pencil or hachure marks on the plat below.
- If more than one lease is dedicated to the well, outline each and identify the ownership thereof (both as to working interest and royalty).
- If more than one lease of different ownership is dedicated to the well, have the interests of all owners been consolidated by communitization, unitization, force-pooling, etc?

☐ Yes ☐ No If answer is "yes," type of consolidation \_\_\_\_\_

If answer is "no," list the owners and tract descriptions which have actually been consolidated. (Use reverse side of this form if necessary.) \_\_\_\_\_

No allowable will be assigned to the well until all interests have been consolidated (by communitization, unitization, forced-pooling, or otherwise) or until a non-standard unit, eliminating such interests, has been approved by the Commission.



CERTIFICATION

I hereby certify that the information contained herein is true and complete to the best of my knowledge and belief.

*[Signature]*  
W. J. Mueller

Position  
Sr. Engineering Specialist

Company  
Phillips Oil Company

Date

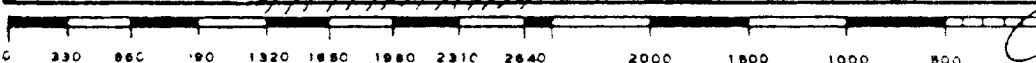
I hereby certify that the well location shown on this plat was plotted from field notes of actual surveys made by me or under my supervision, and that the same is true and correct to the best of my knowledge and belief.

Date Surveyed  
OCTOBER 13, 1983

Registered Professional Engineer and Land Surveyor

*[Signature]*

Certificate No. JOHN W. WEST, 676  
RONALD J. EIDSON, 3239



leaf 48/17/14  
present 4/14/84

ELF

OCT 31 1983  
C.C.D.  
HOBBS OFF