

NEW MEXICO OIL CONSERVATION COMMISSION  
WELL LOCATION AND ACREAGE DEDICATION PLAT

Form O-10,  
Supersedes C-1, 28  
Effective 1-1-65

All distances must be from the outer boundaries of the Section

Gulf Oil Corp.		Lease		Lea T2 State		Well No. 3	
Section	16	Township	19 South	Range	35 East	County	
G				Lea			

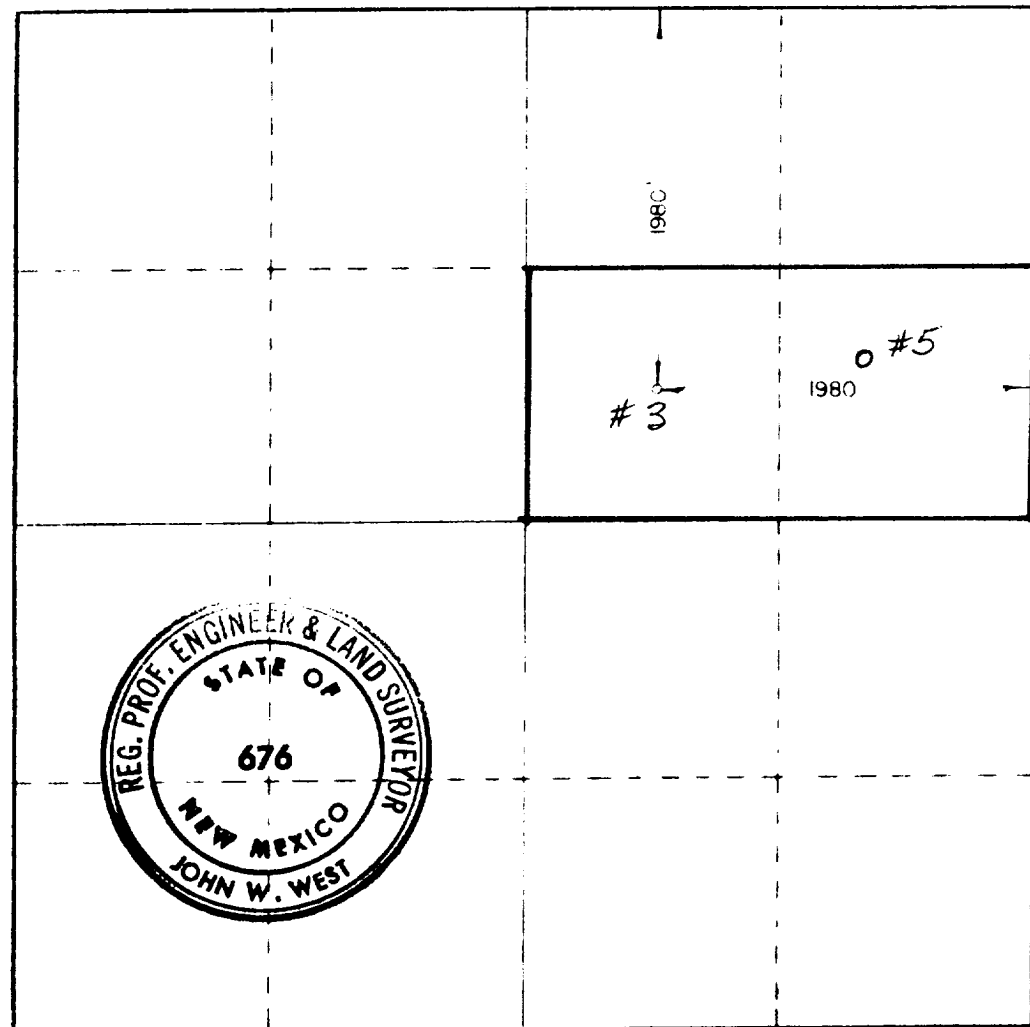
1980		feet from the north line and		1980		feet from the east line	
Ground Level Elev.		Producing Formation		Pool		Producing Acreage	
3788.6'		Bone Springs		Schwab Bone Springs		80	

- 1 Outline the acreage dedicated to the subject well by colored pencil or hatchure marks on the plat below.
- 2 If more than one lease is dedicated to the well, outline each and identify the ownership thereof (both as to working interest and royalty).
- 3 If more than one lease of different ownership is dedicated to the well, have the interests of all owners been consolidated by communitization, unitization, force-pooling, etc?

☐ Yes ☐ No If answer is "yes," type of consolidation \_\_\_\_\_

If answer is "no," list the owners and tract descriptions which have actually been consolidated (Use reverse side of this form if necessary.) \_\_\_\_\_

No allowable will be assigned to the well until all interests have been consolidated (by communitization, unitization, forced-pooling, or otherwise) or until a non-standard unit, eliminating such interests, has been approved by the Commission.



CERTIFICATION

I hereby certify that the information contained herein is true and complete to the best of my knowledge and belief.

*R.D. Pitre*

Name

R.D. PITRE

Position

AREA ENGINEER

Company

GULF OIL CORP

Date

8-13-84

I hereby certify that the well location shown on this plat was plotted from field notes of actual surveys made by me or under my supervision, and that the same is true and correct to the best of my knowledge and belief.

Date Approved

August 13, 1983

Registered Professional Engineer and Land Surveyor

*John W. West*

Certificate No. JOHN W. WEST,

676

RONALD J. EIDSON,

3239

RECEIVED

AUG 15 1984

O.C.D.  
HOBBY OFFICE

**NEW MEXICO OIL CONSERVATION COMMISSION  
WELL LOCATION AND ACREAGE DEDICATION PLAT**

Form C-402  
Supersedes C-128  
Effective 1-1-85

All distances must be from the outer boundaries of the Section

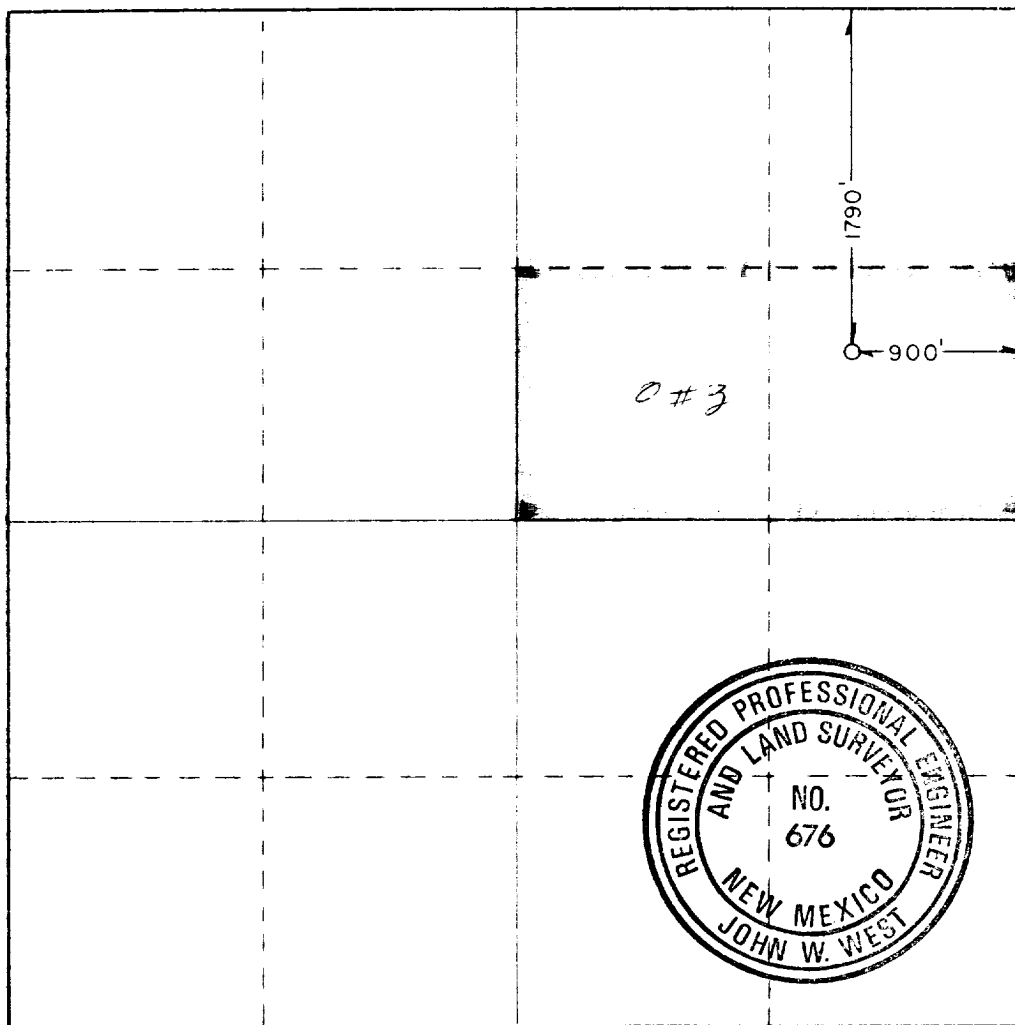
Operator <b>GULF OIL CO.</b>			Lease <b>LEA TZ STATE</b>		Well No. <b>5</b>
Plot Letter <b>H</b>	Section <b>16</b>	Township <b>19SOUTH</b>	Range <b>35 EAST</b>	County <b>LEA</b>	
Actual Footage Location of Well:					
<b>1790</b>	feet from the	<b>NORTH</b>	line and	<b>900</b>	feet from the <b>EAST</b> line
Ground Level Elev. <b>3784.0</b>	Producing Formation <i>Bone Springs</i>		Pool <i>Scharf Bone Springs</i>	Well Head Acreage <b>80</b>	

1. Outline the acreage dedicated to the subject well by colored pencil or hatchure marks on the plat below.
2. If more than one lease is dedicated to the well, outline each and identify the ownership thereof (both as to working interest and royalty).
3. If more than one lease of different ownership is dedicated to the well, have the interests of all owners been consolidated by communization, unitization, force-pooling, etc?

☐ Yes    ☐ No    If answer is "yes," type of consolidation \_\_\_\_\_

If answer is "no," list the owners and tract descriptions which have actually been consolidated. (Use reverse side of this form if necessary.) \_\_\_\_\_

No allowable will be assigned to the well until all interests have been consolidated (by communization, unitization, forced-pooling, or otherwise) or until a non-standard unit, eliminating such interests, has been approved by the Commission.



**CERTIFICATION**

I hereby certify that the information contained herein is true and complete to the best of my knowledge and belief.

*R.C. Anderson*

**R.C. ANDERSON**

**Area Prod. Mgr**

**Gulf Oil Corp.**

**7-12-84**

I hereby certify that the well location shown on this plat was plotted from field notes of actual surveys made by me or under my supervision, and that the same is true and correct to the best of my knowledge and belief.

Date Surveyed

**MARCH 21, 1984**

Registered Professional Engineer  
and Land Surveyor

*John W. West*

Certificate No. **JOHN W. WEST, 676**

**RONALD J. EIDSON, 3239**



RECEIVED

JUL 13 1984

O.C.D.  
HOBBS OFFICE

NEW MEXICO OIL CONSERVATION COMMISSION  
WELL LOCATION AND ACREAGE DEDICATION PLAT

Form C-102  
Supersedes C-128  
Effective 1-65

All distances must be from the outer boundaries of the Section.

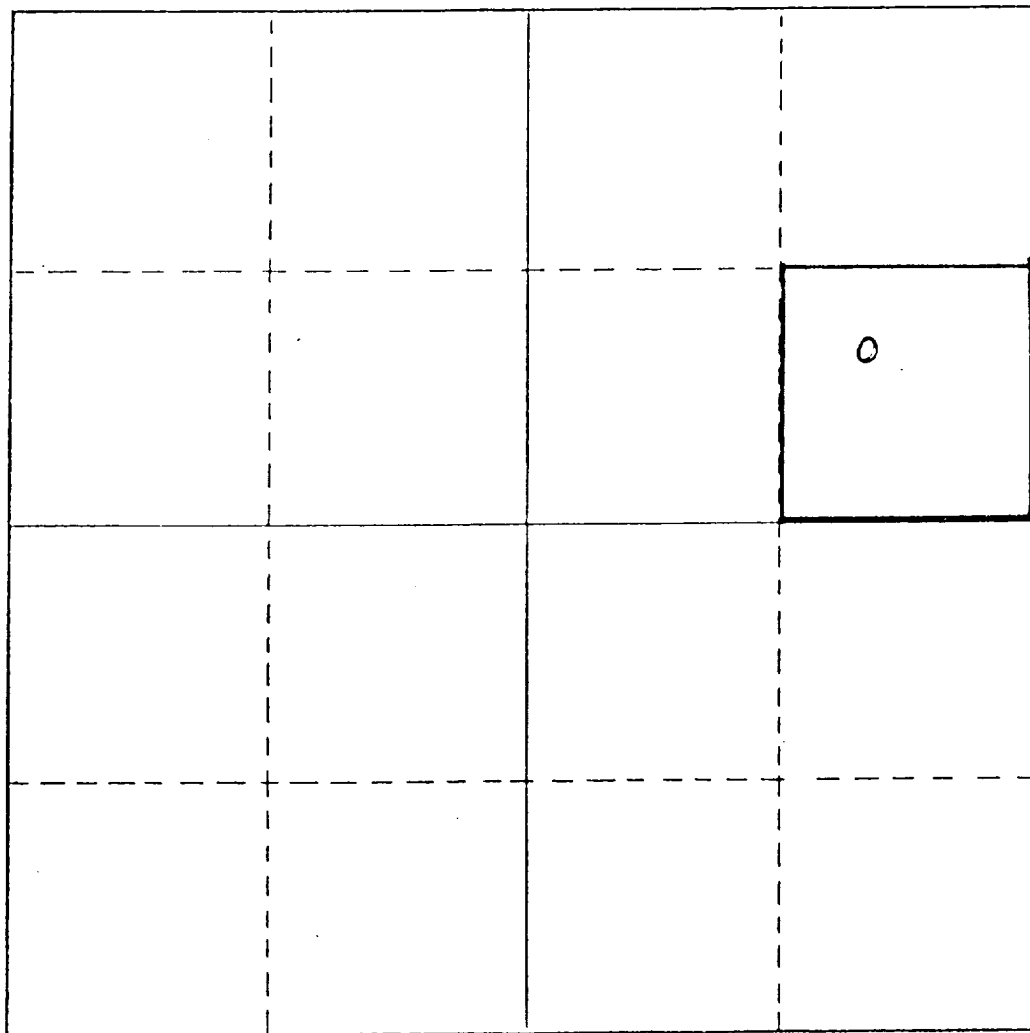
Operator <i>Gulf Oil Corp.</i>			Lease <i>Lea "TZ" State</i>		Well No. <i>5</i>
Unit Letter <i>H</i>	Section <i>16</i>	Township <i>19S</i>	Range <i>35E</i>	County <i>Lea</i>	
Actual Footage Location of Well: <i>1790</i> feet from the <i>North</i> line and <i>900</i> feet from the <i>East</i> line					
Ground Level Elev. <i>3784'</i>	Producing Formation <i>Wolfcamp</i>		Pool <i>S.E. Scharb Wolfcamp</i>	Dedicated Acreage: <i>40</i> Acres	

1. Outline the acreage dedicated to the subject well by colored pencil or hatchure marks on the plat below.
2. If more than one lease is dedicated to the well, outline each and identify the ownership thereof (both as to working interest and royalty).
3. If more than one lease of different ownership is dedicated to the well, have the interests of all owners been consolidated by communitization, unitization, force-pooling, etc?

☐ Yes ☐ No If answer is "yes," type of consolidation \_\_\_\_\_

If answer is "no," list the owners and tract descriptions which have actually been consolidated. (Use reverse side of this form if necessary.) \_\_\_\_\_

No allowable will be assigned to the well until all interests have been consolidated (by communitization, unitization, forced-pooling, or otherwise) or until a non-standard unit, eliminating such interests, has been approved by the Commission.



CERTIFICATION

I hereby certify that the information contained herein is true and complete to the best of my knowledge and belief.

*James L. Pitre*

Name

*for R.D. PITRE*

Position

*AREA ENGINEER*

Company

*GULF OIL CORP*

Date

*3-25-85*

I hereby certify that the well location shown on this plat was plotted from field notes of actual surveys made by me or under my supervision, and that the same is true and correct to the best of my knowledge and belief.

Date Surveyed

Registered Professional Engineer and/or Land Surveyor

Certificate No.

