

NEW MEXICO OIL CONSERVATION COMMISSION
WELL LOCATION AND ACREAGE DEDICATION AT

Form C-102
Supersedes C-128
Effective 1-1-65

All distances must be from the outer boundaries of the Section.

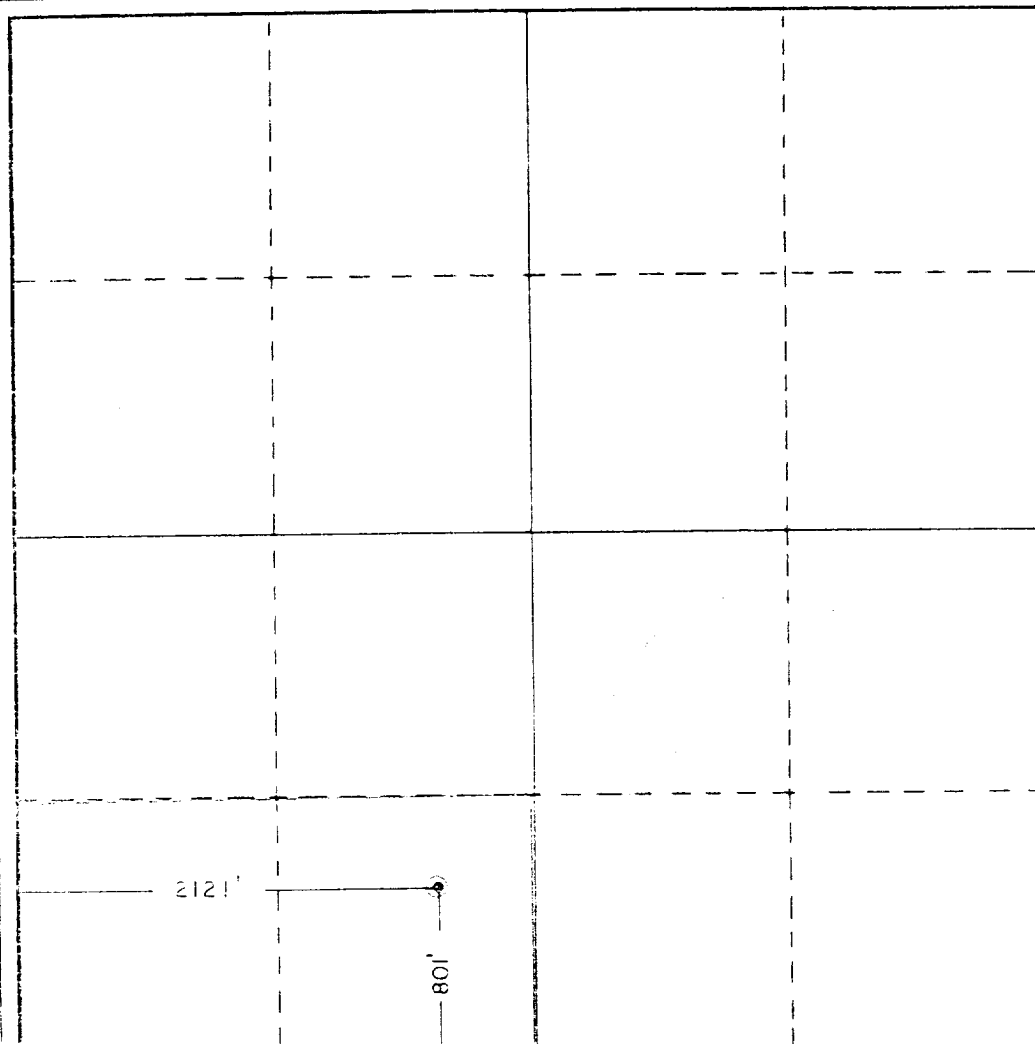
Operator THE SUPERIOR OIL COMPANY, THE		Lease MESCALENO RIDGE "C"		Well No. 1
Tract Letter N	Section 17	Township 19S	Range 35E	County LEA
Actual Footage Location of Well: 2121 feet from the WEST line and 801 feet from the SOUTH line				
Ground Level Elev. 3841.2	Producing Formation Bone Spring	Pool Scharb	Dedicated Acreage: 80 Acres	

1. Outline the acreage dedicated to the subject well by colored pencil or hachure marks on the plat below.
2. If more than one lease is dedicated to the well, outline each and identify the ownership thereof (both as to working interest and royalty).
3. If more than one lease of different ownership is dedicated to the well, have the interests of all owners been consolidated by communitization, unitization, force-pooling, etc?

☐ Yes ☐ No If answer is "yes," type of consolidation _____

If answer is "no," list the owners and tract descriptions which have actually been consolidated. (Use reverse side of this form if necessary.) _____

No allowable will be assigned to the well until all interests have been consolidated (by communitization, unitization, forced-pooling, or otherwise) or until a non-standard unit, eliminating such interests, has been approved by the Commission.



CERTIFICATION

I hereby certify that the information contained herein is true and complete to the best of my knowledge and belief.

G. E. Tate
Name

G. E. Tate
Position

Division Operations Supt.
Company

Superior Oil Company, The

Date
12-4-84

I hereby certify that the well location shown on this plat was plotted from field notes of actual surveys made by me or under my supervision, and that the same is true and correct to the best of my knowledge and belief.

Date Surveyed
9/19/84

Registered Professional Engineer
and/or Land Surveyor

Ronald J. Eidson
Certificate No. JOHN W. WEST, 676

RONALD J. EIDSON, 3239

0 220 660 1100 1540 1980 2420 2860 3300 3740 4180 4620 5060 5500 5940 6380 6820 7260 7700 8140 8580 9020 9460 9900