

NO. OF COPIES RECEIVED	
DISTRIBUTION	
SANTA FE	
FILE	
U.S.G.S.	
LAND OFFICE	
OPERATOR	

5A. Indicate Type of Lease  
STATE ☒ FEE ☐

5. State Oil & Gas Lease No.

APPLICATION FOR PERMIT TO DRILL, DEEPEN, OR PLUG BACK.

1a. Type of Work DRILL <input checked="" type="checkbox"/> DEEPEN <input type="checkbox"/> PLUG BACK <input type="checkbox"/>		7. Unit Agreement Name
b. Type of Well OIL WELL <input checked="" type="checkbox"/> GAS WELL <input type="checkbox"/> OTHER <input type="checkbox"/> SINGLE ZONE <input checked="" type="checkbox"/> MULTIPLE ZONE <input type="checkbox"/>		8. Farm or Lease Name Central Vacuum Unit
2. Name of Operator Texaco Inc.		9. Well No. 9
3. Address of Operator P. O. Box 3109, Midland, Texas 79702		10. Field and Pool, or Wildcat Vacuum Grayburg-S.A.
4. Location of Well UNIT LETTER <u>G</u> LOCATED <u>1980</u> FEET FROM THE <u>North</u> LINE AND <u>2080</u> FEET FROM THE <u>East</u> LINE OF SEC. <u>30</u> TWP. <u>17-S</u> RGE. <u>35-E</u> NMPM		12. County Lea
19. Proposed Depth 4800'		19A. Formation Grayburg-S. A.
20. Rotary or C.T. Rotary		
21. Elevations (show whether DF, RT, etc.) 3984'	21A. Kind & Status Plug. Bond -	21B. Drilling Contractor -
		22. Approx. Date Work will start 12-1-84

23.

PROPOSED CASING AND CEMENT PROGRAM

SIZE OF HOLE	SIZE OF CASING	WEIGHT PER FOOT	SETTING DEPTH	SACKS OF CEMENT	EST. TOP
15"	11 3/4"	42#, H-40	1650'	1400	Circulate
11" & 7 7/8"*	5 1/2"	15.5#, K-55	4800'	2000	Circulate

\*Drill 11" hole to 2800'. If water flow is not encountered, drill 7 7/8" hole to TD.

- SURFACE CASING: 1200 sxs 50/50 Pozmix Class "H" w/1/4# flocele, 2% CaCl (13.7 ppg, 1.37 ft<sup>3</sup>/sx) followed by 200 sxs Class "H" w/1/4# flocele 2% CaCl (15.6 ppg, 1.18 ft<sup>3</sup>/sx).
- PRODUCTION CASING: 2000 sxs Lightweight w/15# salt and 1/4# flocele (12.7 ppg, 2.00 ft<sup>3</sup>/sx).

APPROVAL VALID FOR 180 DAYS  
PERMIT EXPIRES 5/16/85  
UNLESS DRILLING UNDERWAY.

IN ABOVE SPACE DESCRIBE PROPOSED PROGRAM; IF PROPOSAL IS TO DEEPEN OR PLUG BACK, GIVE DATA ON PRESENT PRODUCTIVE ZONE AND PROPOSED NEW PRODUCTIVE ZONE. GIVE BLOWOUT PREVENTER PROGRAM, IF ANY.

I hereby certify that the information above is true and complete to the best of my knowledge and belief.

Signed Russell E. Sexton Russell E. Sexton Title Engineer's Assistant Date 11-9-84

(This space for State Use)

ORIGINAL SIGNED BY JERRY SEXTON  
APPROVED BY DISTRICT SUPERVISOR TITLE  DATE   
CONDITIONS OF APPROVAL, IF ANY:

NEW MEXICO OIL CONSERVATION COMMISSION  
WELL LOCATION AND ACREAGE DEDICATION PLAT

Form C-102  
Supersedes C-128  
Effective 1-1-65

All distances must be from the outer boundaries of the Section.

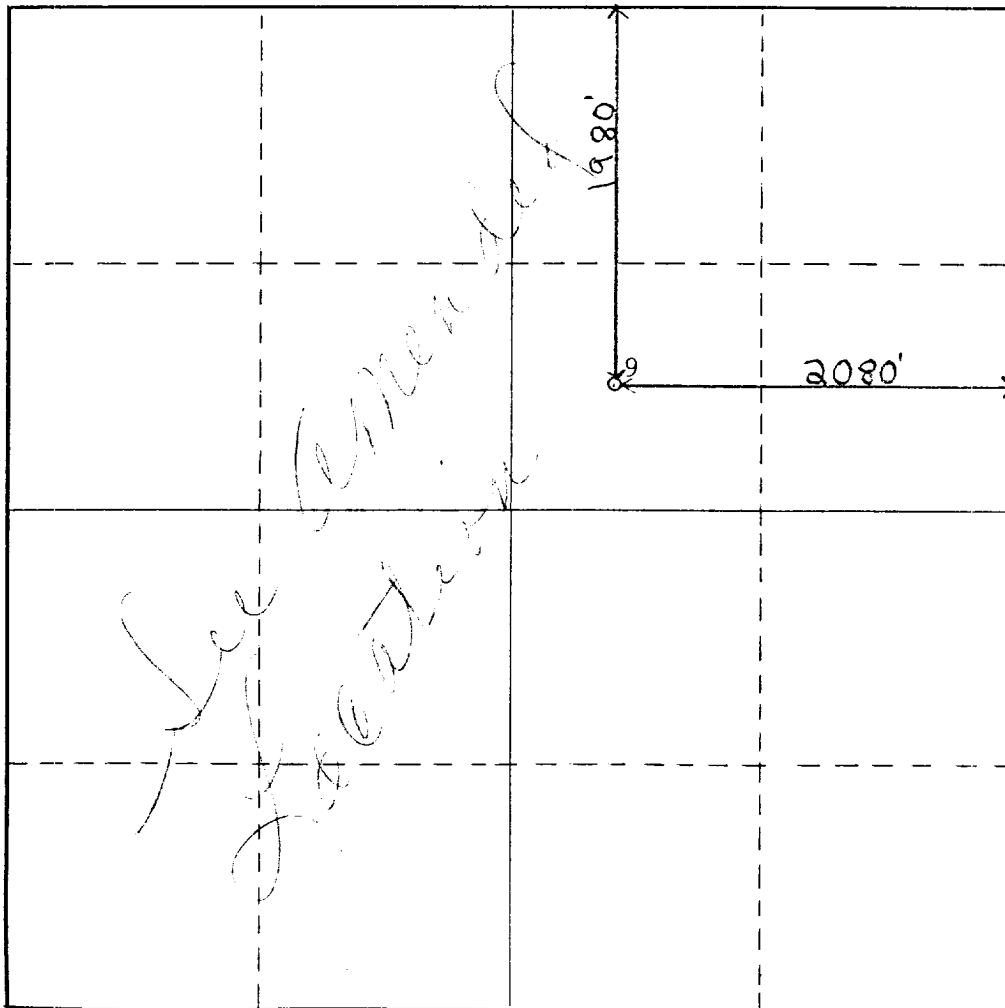
Operator <b>TEXACO INC.</b>			Lease <b>CENTRAL VACUUM UNIT</b>		Well No. <b>9</b>
Unit Letter <b>G</b>	Section <b>30</b>	Township <b>17-S</b>	Range <b>35-E</b>	County <b>LEA</b>	
Actual Footage Location of Well: <b>1980</b> feet from the <b>NORTH</b> line and <b>2080</b> feet from the <b>EAST</b> line					
Ground Level Elev. <b>3984' GR</b>	Producing Formation <b>GRAYBURG-SAN ANDRES</b>		Pool <b>VACUUM GRAYBURG SAN ANDRES</b>		Dedicated Acreage: <b>40</b> Acres

1. Outline the acreage dedicated to the subject well by colored pencil or hachure marks on the plat below.
2. If more than one lease is dedicated to the well, outline each and identify the ownership thereof (both as to working interest and royalty).
3. If more than one lease of different ownership is dedicated to the well, have the interests of all owners been consolidated by communitization, unitization, force-pooling, etc?

☐ Yes ☐ No If answer is "yes," type of consolidation \_\_\_\_\_

If answer is "no," list the owners and tract descriptions which have actually been consolidated. (Use reverse side of this form if necessary.) \_\_\_\_\_

No allowable will be assigned to the well until all interests have been consolidated (by communitization, unitization, forced-pooling, or otherwise) or until a non-standard unit, eliminating such interests, has been approved by the Commission.



CERTIFICATION

I hereby certify that the information contained herein is true and complete to the best of my knowledge and belief.

Name

**RUSSELL E. SEXTON**

Position

**ENGINEER'S ASSISTANT**

Company

**TEXACO INC.**

Date

**NOVEMBER 9, 1984**

I hereby certify that the well location shown on this plat was plotted from field notes of actual surveys made by me or under my supervision, and that the same is true and correct to the best of my knowledge and belief.

Date Surveyed

**OCTOBER 18, 1984**

Registered Professional Engineer and/or Land Surveyor

**B. L. EITLAND**

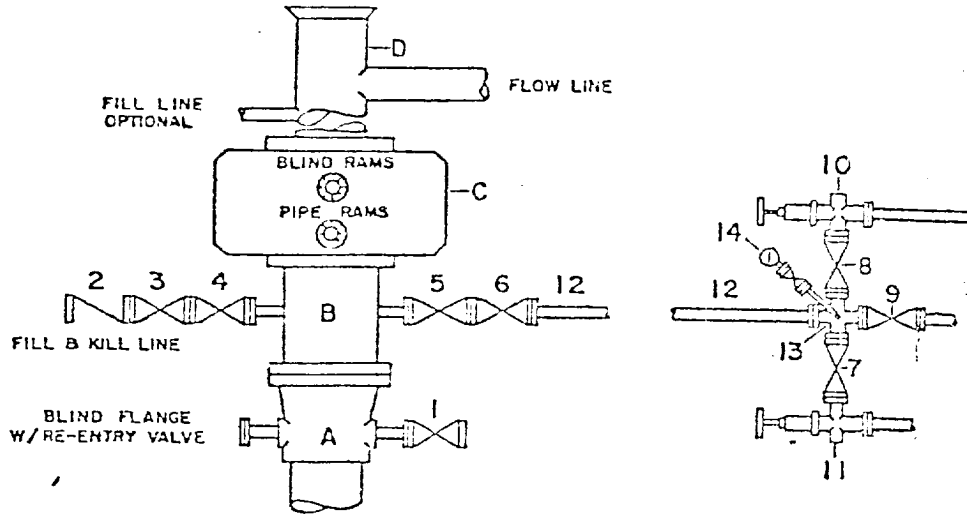
Certificate No.

**4386**

0 330 660 990 1320 1650 1980 2310 2640 2970 3300 3630 3960 4290 4620 4950 5280 5610 5940 6270 6600

**DRILLING CONTROL**  
**CONDITION II-3000 PSI WP**

H<sub>2</sub>S TRIM REQUIRED  
YES \_\_\_\_\_ NO \_\_\_\_\_



DRILLING CONTROL

MATERIAL LIST - CONDITION II

- |               |   |
|---------------|---|
| A             | Texaco Wellhead   |
| B             | 3000# W.P. drilling spool with a 2" minimum flanged outlet for kill-line and 3" minimum flanged outlet for choke line   |
| C             | 3000# W.P. Dual ram type preventer, hydraulic operated with 1" steel, 3000# W.P. control lines (where sub-structure height is adequate, 2-3000# W.P. single ram type preventers may be utilized.) |
| D             | Bell nipple with flowline and fill-up outlets. (Kill line may also be used for fill-up line.)   |
| 1, 3, 4, 7, 8 | 2" minimum 3000# W.P. flanged full opening steel gate valve, or Halliburton Lo Torc Plug valve.   |
| 2             | 2" minimum 3000# W.P. back pressure valve   |
| 5, 6, 9       | 3" minimum 3000# W.P. flanged full opening steel gate valve, or Halliburton Lo Torc Plug valve.   |
| 12            | 3" minimum schedule 80, Grade "B", seamless line pipe   |
| 13            | 2" minimum x 3" minimum 3000# W.P. flanged cross  |
| 10, 11        | 2" minimum 3000# W.P. adjustable choke bodies   |
| 14            | Cameron Mud Gauge or equivalent (location optional in choke line.)  |



TEXACO, INC.  
PRODUCING DEPARTMENT U.S.  
MIDLAND, TEXAS



SCALE	DATE	EST. NO.	DRG. NO.
DRAWN BY			
CHECKED BY			
APPROVED BY			

EXHIBIT B