

30-025-29390

NO. OF COPIES RECEIVED

DISTRIBUTION

SANTA FE

FILE

U.S.G.S.

LAND OFFICE

OPERATOR

## NEW MEXICO OIL CONSERVATION COMMISSION

Form C-101  
Revised 1-1-65

5A. Indicate Type of Lease

STATE ☒ FEE ☐

5. State Oil &amp; Gas Lease No.

B-1527-2

## APPLICATION FOR PERMIT TO DRILL, DEEPEN, OR PLUG BACK

1a. Type of Work

DRILL ☒DEEPEN ☐PLUG BACK ☐

b. Type of Well

OIL WELL ☒GAS WELL ☐

OTHER

SINGLE ZONE ☐MULTIPLE ZONE ☐

2. Name of Operator

Mobil Producing Tx. &amp; N.M. Inc.

3. Address of Operator

P.O. Box 633, Midland, Tx. 79702

L.L. Maroney

4. Location of Well

UNIT LETTER K LOCATED 1975 FEET FROM THE West LINEAND 1849 FEET FROM THE South LINE OF SEC. 7 TWP. 17S RGE. 35E NMPM

7. Unit Agreement Name

8. Farm or Lease Name

North Vacuum Abo  
East Unit

9. Well No.

19

10. Field and Pool, or Wildcat

Vacuum North-Abo

12. County

Lea

19. Proposed Depth

9000'

19A. Formation

Abo

20. Rotary or C.T.

Rotary

21. Elevations (Show whether DF, RT, etc.)

4007' GR

21A. Kind &amp; Status Plug. Bond

Active Blanket

21B. Drilling Contractor

Unknown

22. Approx. Date Work will start

Sept. 1, 1985

23.

## PROPOSED CASING AND CEMENT PROGRAM

SIZE OF HOLE	SIZE OF CASING	WEIGHT PER FOOT	SETTING DEPTH	SACKS OF CEMENT	EST. TOP
17-1/2"	13-3/8"	48#	400'	Well Circ to Surface	
12-1/4"	8-5/8"	28 & 32#	0-5000'	Well Circ to Surface	
7-7/8"	5-1/2"	15.5 & 17#	0- TD	Well Circ to Surface	

BOP Sketch Attached

Permit Expires 6 Months From Approval  
Date Unless Drilling Underway.

IN ABOVE SPACE DESCRIBE PROPOSED PROGRAM: IF PROPOSAL IS TO DEEPEN OR PLUG BACK, GIVE DATA ON PRESENT PRODUCTIVE ZONE AND PROPOSED NEW PRODUCTIVE ZONE. GIVE BLOWOUT PREVENTER PROGRAM, IF ANY.

I hereby certify that the information above is true and complete to the best of my knowledge and belief.

Signed G. E. Tate G.E. Tate Title Env. & Reg. Mgr. Date August 26, 1985

(This space for State Use)

Eddie W. Seay

APPROVED BY Oil & Gas Inspector TITLE DATE

CONDITIONS OF APPROVAL, IF ANY:

AUG 30 1985

RECEIVED

AUG 28 1985

U.S. AIR FORCE

STATE OF NEW MEXICO  
ENERGY AND MINERALS DEPARTMENT

All distances must be from the outer boundaries of the Section.

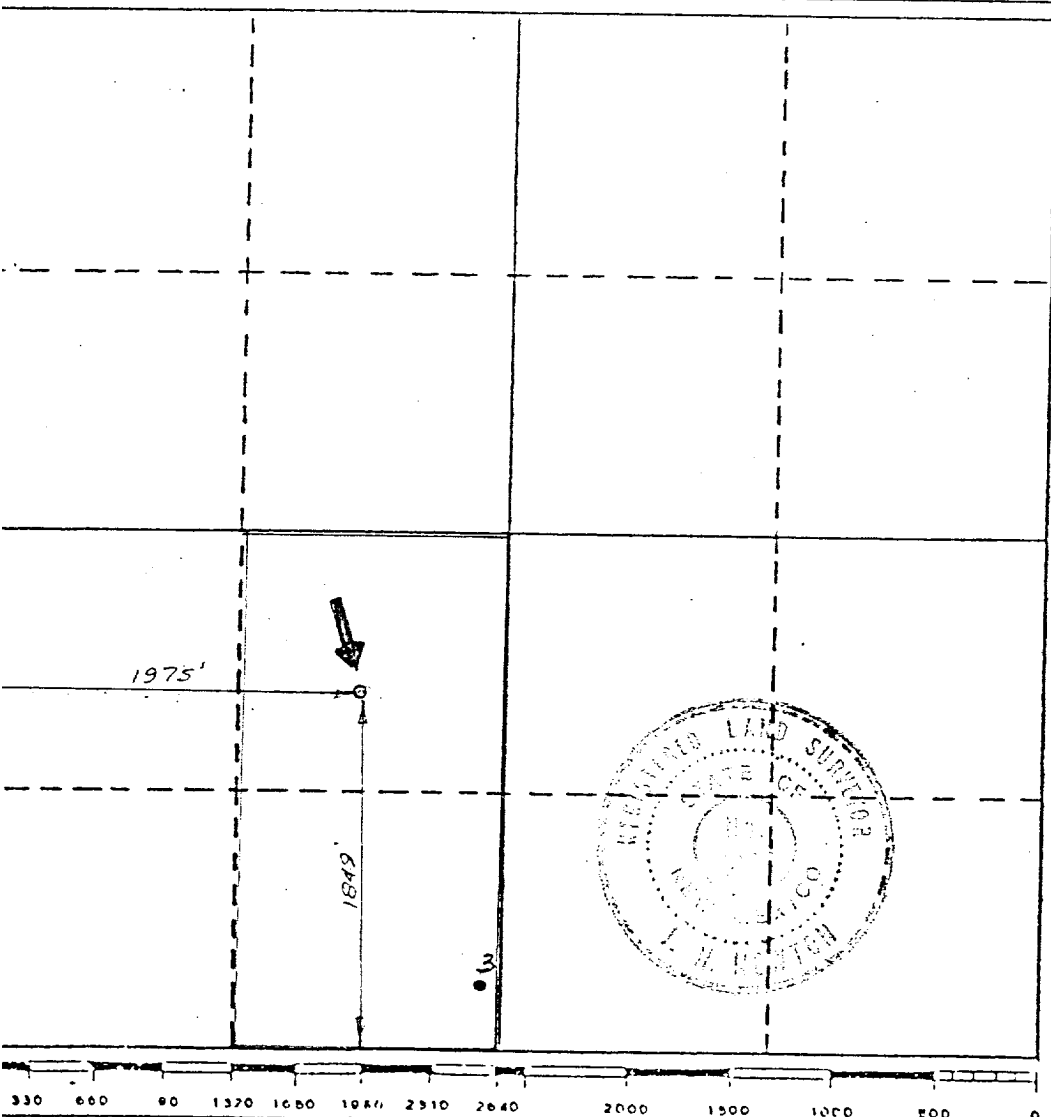
Operator Mobil Producing Tx. & N.M. Inc.		Lease North Vacuum Abo East Unit		Well No. 19
Unit Letter K	Section 7	Township 17-S	Range 35-E	County Lea
Actual Footage Location of Well: 1975 feet from the West line and 1849 feet from the South line				
Ground Level Elev. 4007	Producing Formation Abo	Pool Vacuum, North	Dedicated Acreage: 2 wells 80 Acres	

- Outline the acreage dedicated to the subject well by colored pencil or hatchure marks on the plat below.
- If more than one lease is dedicated to the well, outline each and identify the ownership thereof (both as to working interest and royalty).
- If more than one lease of different ownership is dedicated to the well, have the interests of all owners been consolidated by communitization, unitization, force-pooling, etc?

☐ Yes ☐ No If answer is "yes," type of consolidation \_\_\_\_\_

If answer is "no," list the owners and tract descriptions which have actually been consolidated. (Use reverse side of this form if necessary.) \_\_\_\_\_

No allowable will be assigned to the well until all interests have been consolidated (by communitization, unitization, forced-pooling, or otherwise) or until a non-standard unit, eliminating such interests, has been approved by the Division.



## CERTIFICATION

I hereby certify that the information contained herein is true and complete to the best of my knowledge and belief.

Signature G. E. Tate  
 Name G.E. Tate  
 Position Env. & Reg. Mgr.  
 Company Mobil Producing Tx. & N.M. Inc.  
 Date August 26, 1985

I hereby certify that the well location shown on this plat was plotted from field notes of actual surveys made by me or under my supervision, and that the same is true and correct to the best of my knowledge and belief.

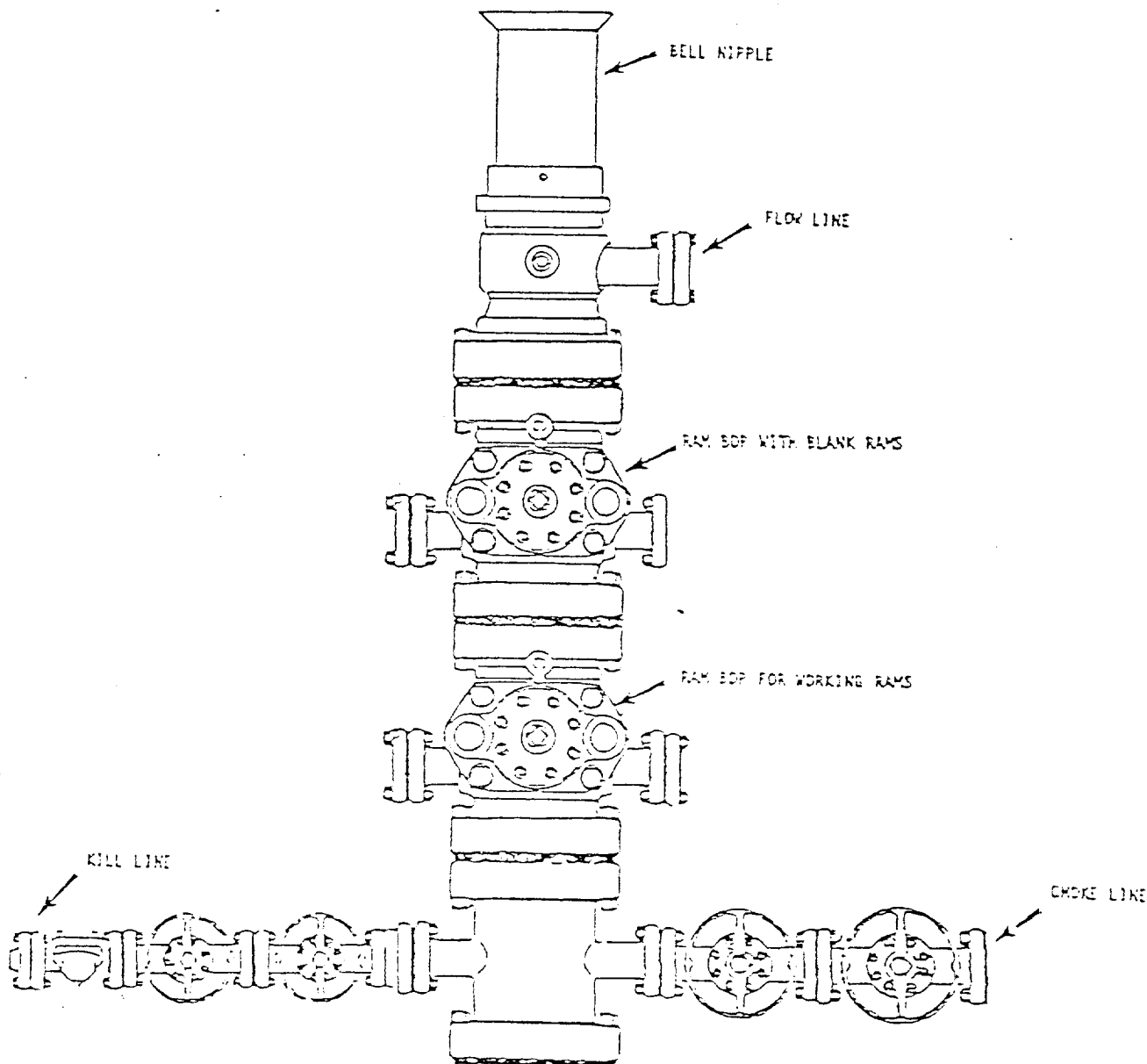
Date Surveyed August 8, 1985  
 Registered Professional Engineer and/or Land Surveyor

J. N. Newton  
 Certificate No. 5109

RECEIVED

AUG 28 1985

U.S. AIR FORCE



BOP rams will be actuated on each trip of drill pipe and will be tested before drilling the plug on each casing string.

\*NOTE: ALL VALVES ARE METAL-TO-METAL SEAL AND FLANGED. ALL COMPONENTS MUST MEET ABOVE MINIMUM PRESSURE RATINGS. ALL COMPONENTS TO BE TESTED TO RATED PRESSURE AFTER ASSEMBLY AND BEFORE FURTHER DOWNHOLE OPERATIONS MAY BE CONDUCTED.

Mobil Producing  
Texas & New Mexico Inc.  
Houston, Texas

MOBIL NO. 19 Unit  
North Vassar  
(LEASE)  
Lea COUNTY, DM STATE

BLOWOUT PREVENTER ASSEMBLY  
(13 3/4 IN. 3000 PSI WP)

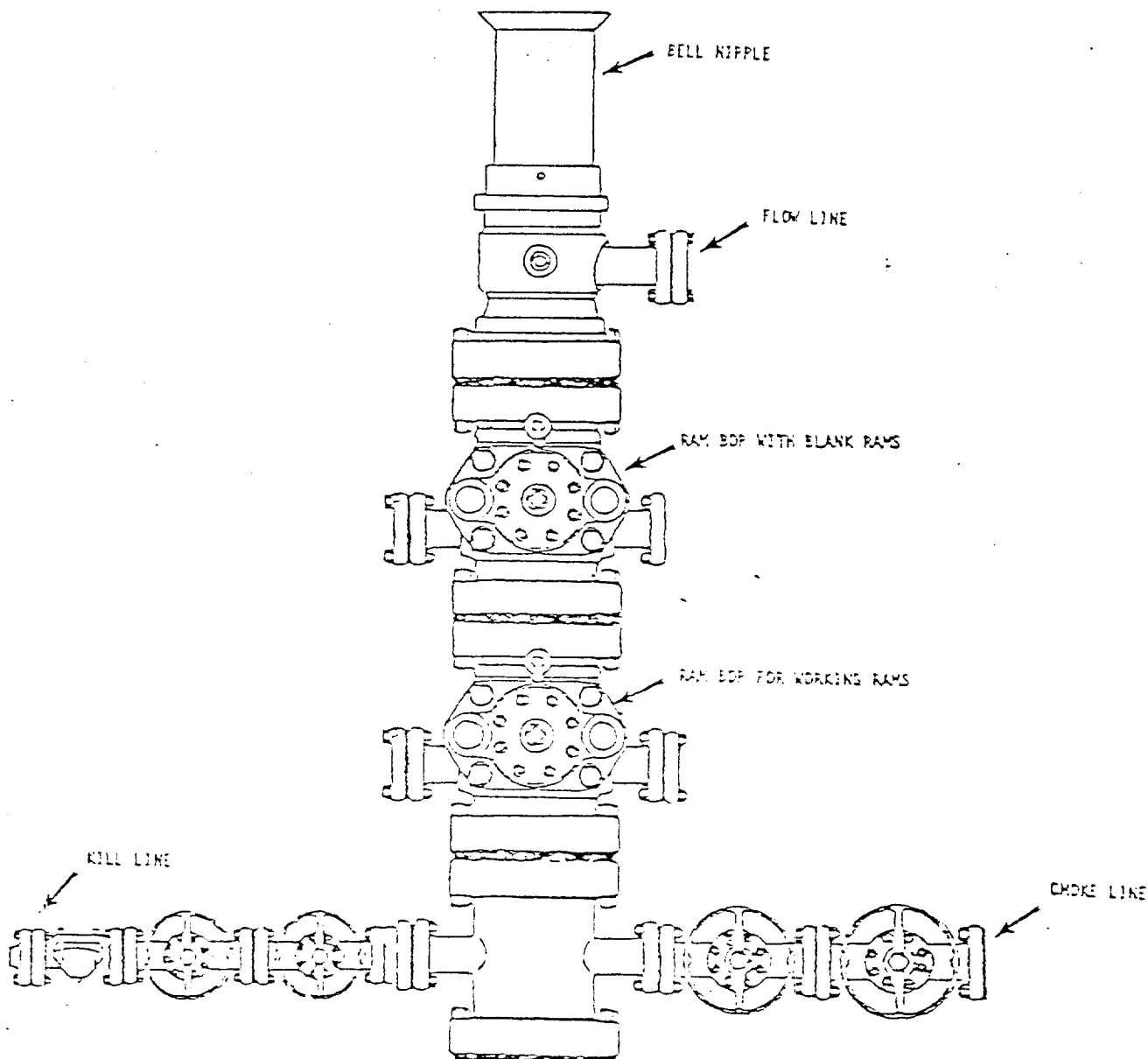
Scale

Date  
Drawn  
Checked  
Approved  
Revised

RECEIVED

AUG 28 1985

U.S. MARSHAL SERVICE



BOP rams will be actuated on each trip of drill pipe and will be tested before drilling the plug on each casing string.

NOTE: ALL VALVES ARE METAL-TO-METAL SEAL AND FLANGED. ALL COMPONENTS MUST MEET ABOVE MINIMUM PRESSURE RATINGS. ALL COMPONENTS TO BE TESTED TO RATED PRESSURE AFTER ASSEMBLY AND BEFORE FURTHER DOWNHOLE OPERATIONS MAY BE CONDUCTED.

Mobil Producing  
Texas & New Mexico Inc.  
Houston, Texas

MOBIL NO. 19 North Vassar Oil Field  
(LEASE)

Lea COUNTY, Wm STATE

BLOWOUT PREVENTER ASSEMBLY

(8 7/8 IN. 5000 PSI WP\*)

Scale

Date

Drawn

Checked

Approved

Revised

RECEIVED

AUG 28 1985

OFFICE