

District I  
325 N. French, Hobbs, NM 88240

District II  
811 South First, Artesia, NM 88210

District III  
1000 Rio Brazos Rd., Aztec, NM 87410

District IV  
2040 South Pacheco, Santa Fe, NM 87505

State of New Mexico  
Energy, Minerals & Natural Resources Department

OIL CONSERVATION DIVISION  
2040 South Pacheco  
Santa Fe, NM 87505

Form C-101  
Revised March 12, 1999

Submit to Appropriate District Office  
State Lease - 6 Copies  
Fee Lease - 5 Copies

☐ AMENDED REPORT

APPLICATION FOR PERMIT TO DRILL, RE-ENTER, DEEPEN, PLUGBACK, OR ADD A ZONE

<sup>1</sup> Operator Name and Address. Mobil Producing TX & NM, Inc. P. O. Box 4358 Houston TX 77210-4358		<sup>2</sup> OGRID Number 15144
		<sup>3</sup> API Number 30-025-29430
<sup>4</sup> Property Code 8015	<sup>5</sup> Property Name Bridges State	<sup>6</sup> Well No. 286

<sup>7</sup> Surface Location									
UL or lot no.	Section	Township	Range	Lot Idn	Feet from the	North/South line	Feet from the	East/West line	County
0	26	17S	34E		540	south	1930	east	Lea

<sup>8</sup> Proposed Bottom Hole Location If Different From Surface									
UL or lot no.	Section	Township	Range	Lot Idn	Feet from the	North/South line	Feet from the	East/West line	County
<sup>9</sup> Proposed Pool 1 Vacuum;Blinebry					<sup>10</sup> Proposed Pool 2				

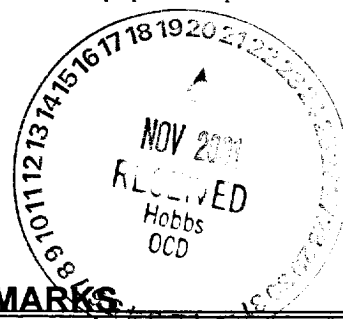
<sup>11</sup> Work Type Code P	<sup>12</sup> Well Type Code O	<sup>13</sup> Cable/Rotary	<sup>14</sup> Lease Type Code S	<sup>15</sup> Ground Level Elevation
<sup>16</sup> Multiple	<sup>17</sup> Proposed Depth no change	<sup>18</sup> Formation	<sup>19</sup> Contractor	<sup>20</sup> Spud Date

<sup>21</sup> Proposed Casing and Cement Program					
Hole Size	Casing Size	Casing weight/foot	Setting Depth	Sacks of Cement	Estimated TOC

<sup>22</sup> Describe the proposed program. If this application is to DEEPEN or PLUG BACK give the data on the present productive zone and proposed new productive zone. Describe the blowout prevention program, if any. Use additional sheets if necessary.  
See attached page for details of proposed work.

Permit Expires 1 Year From Approval  
Date Unless Drilling Underway  
Plug-Back

SEE ATTACHMENT FOR ADDITIONAL REMARKS



<sup>23</sup> I hereby certify that the information given above is true and complete to the best of my knowledge and belief. Signature: D. O. Howard Printed name: Dolores O. Howard Title: Sr. Regulatory Specialist Date: 11/19/2001 Phone: (713) 431-1792		<b>OIL CONSERVATION DIVISION</b> Approved by: Title: Approval Date: Expiration Date: Conditions of Approval: Attached	
---	--	--	--

**ATTACHMENT**

District I  
1625 N. French, Hobbs, NM 88240

District II  
811 South First, Artesia, NM 88210

District III  
1000 Rio Brazos Rd., Aztec, NM 87410

District IV  
2040 South Pacheco, Santa Fe, NM 87505

**State of New Mexico**  
Energy, Minerals & Natural Resources Department

Form C-101  
Revised March 12, 1999

**OIL CONSERVATION DIVISION**  
**2040 South Pacheco**  
**Santa Fe, NM 87505**

Submit to Appropriate District Office  
State Lease - 6 Copies  
Fee Lease - 5 Copies

☐ **AMENDED REPORT**

**APPLICATION FOR PERMIT TO DRILL, RE-ENTER, DEEPEN, PLUGBACK, OR ADD A ZONE**

<sup>1</sup> Operator Name and Address. <b>Mobil Producing TX &amp; NM, Inc.</b> <b>P. O. Box 4358</b> <b>Houston TX 77210-4358</b>		<sup>2</sup> OGRID Number <b>15144</b>
		<sup>3</sup> API Number <b>30-025-29430</b>
<sup>4</sup> Property Code <b>8015</b>	<sup>5</sup> Property Name <b>Bridges State</b>	<sup>6</sup> Well No. <b>286</b>

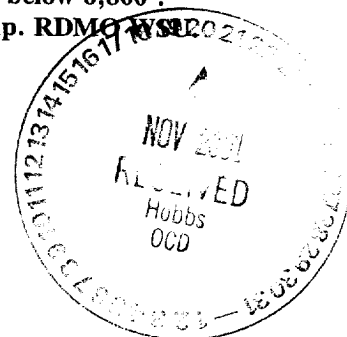
**Additional Remarks**

**Recomplete North Vacuum Abo Unit 286 to Vacuum;Blinebry and rename well to Bridges State 286**

1. MIRU WSU. MIRU Baker Atlas Wireline, NU wireline BOP. Log well from 8370'-5000'
2. Perf Middle Blinebry approx. 6556'-6575', 6615'-6630', 6650'-6660', 6700'-6722', 6740'-6750' w/ 2spf, total holes 154.
3. PU and RIH with 1 jt 3-1/2" N-80 frac string, 10,000 psi RTTS packer and remaining 3-1/2" frac string. Hydro-test 3-1/2" frac while running in the hole. Set packer @ 6,350'. NU frac head and Guardian flange with tree saver.
4. Acidize and sand fracture the Middle Blinebry formation:
5. Fracture-stimulate the Middle Blinebry. Tag the frac fluids with Pro Technics radioactive material. Pump the following pumping schedule @ 35 bpm.

a. Pad	17,000 gal Delta Frac 25		
b. SLF	20,700 gal Delta Frac 25	Ramp 1-5 ppg sand	20/40 white sand
c. SLF	4,200 gal Delta Frac 25	Ramp 5-6 ppg sand	20/40 Super LC
d. Flush	2,600 gal Linear Gel		
6. MIRU Pro Technics wireline equipment. NU wireline BOP. Run Radioactive Tracer Log. POOH and RDMO Pro Technics WLSU
7. Flow well back until dead.
8. PU and RIH with 5-1/2" RBP and workstring. Set RBP @ 6,500'. Dump 2 sx sand on top of RBP. POOH with workstring. MIRU WLSU. Install wireline BOP.
9. Perforate the Upper Blinebry formation from approx. 6425'-6455' w/ 2spf, 62 holes. POOH and RDMO WLSU.
10. PU and RIH with 1jt 3-1/2" frac tbg, 10,000 psi Halliburton RTTS packer and remaining 3-1/2" frac string. Set packer at 6,185'.
11. MIRU Halliburton to acidize and sand fracture the Middle Blinebry formation.
12. Spearhead 1000 gals of 15% inhibited HCl acid into perforations.
13. Fracture-stimulate the Upper Blinebry. Tag the frac fluids with Pro Technics radioactive material. Pump the following pumping schedule @ 25 bpm.

a. Pad	10,000 gal Delta Frac 25		
b. SLF	11,700 gal Delta Frac 25	Ramp 1-5 ppg sand	20/40 white sand
c. SLF	2,300 gal Delta Frac 25	Ramp 5-6 ppg sand	20/40 Super LC
d. Flush	2,500 gal Linear Gel		
14. RDMO Halliburton.
15. MIRU Pro Technics wireline equipment. NU wireline BOP. Run Tracer Log.
16. Flow well back until dead.
17. PU and RIH with retrieving head for 5-1/2" RBP and workstring. Latch onto RBP. Continue in the hole and tag any fill. POOH with workstring and RBP, Note: If fill was found above 6,800' RIH and CO to below 6,800'.
18. MI and rack 2-7/8" production tubing. RIH with production equipment. Place on pump. RDMO WLSU



# OIL CONSERVATION DIVISION

PO Box 2088  
Santa Fe, NM 87504-2088

☐ AMENDED REPORT

## WELL LOCATION AND ACREAGE DEDICATION PLAT

1	API Number 30-025-29430	2	Pool Code 61850	3	Pool Name Vacuum; Blinebry
4	Property Code 8015	5	Property Name Bridges State	6	Well Number 286
7	OGRID No. 15144	8	Operator Name Mobil Producing Texas & New Mexico Inc.	9	Elevation 4033.5' KB

### 10 Surface Location

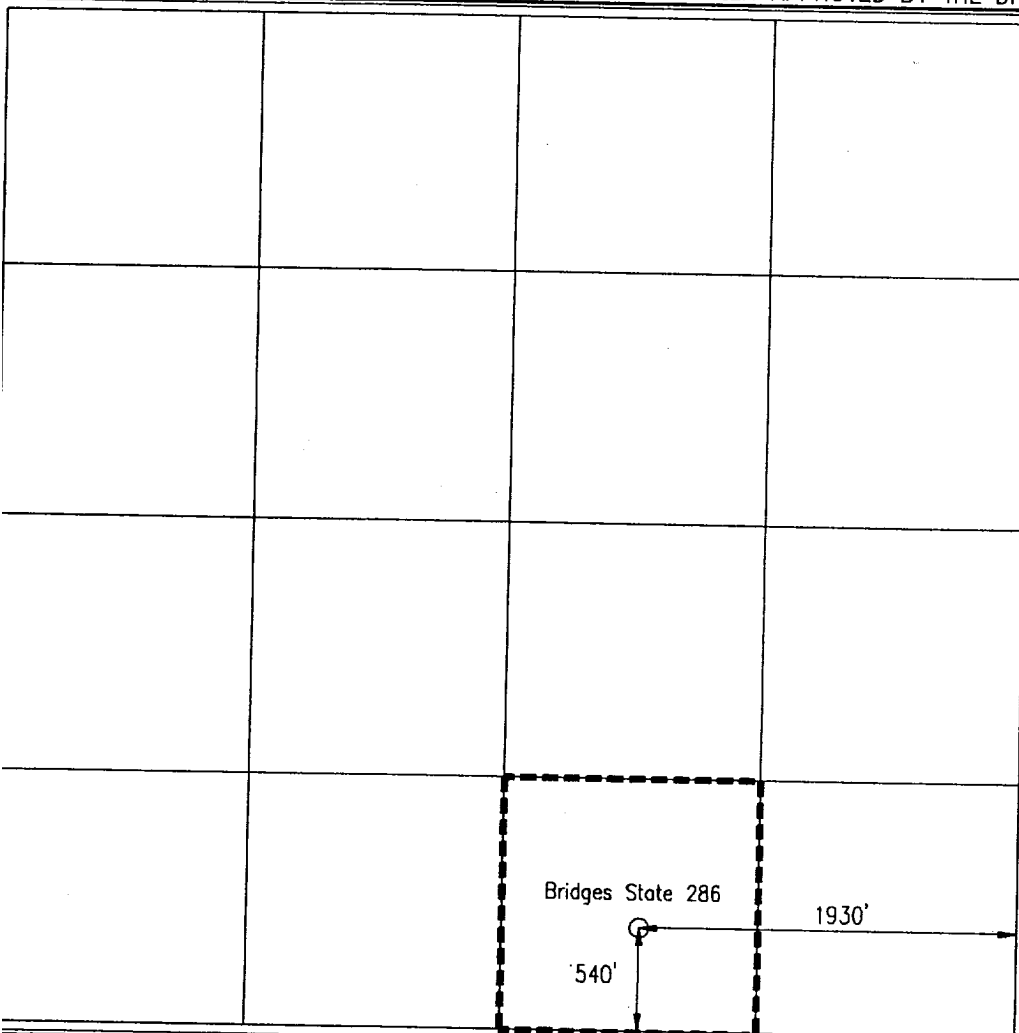
UL or lot no. 0	Section 26	Township 17 S	Range 34 E	Lot Idn	Feet from the 540	North/South line South	Feet from the 1930	East/West line East	County Lea
--------------------	---------------	------------------	---------------	---------	----------------------	---------------------------	-----------------------	------------------------	---------------

### 11 Bottom Hole Location If Different From Surface

UL or lot no.	Section	Township	Range	Lot Idn	Feet from the	North/South line	Feet from the	East/West line	County
---------------	---------	----------	-------	---------	---------------	------------------	---------------	----------------	--------

Dedicated Acres 40	13 Joint or Infill	14 Consolidation Code	15 Order No.
-----------------------	--------------------	-----------------------	--------------

NO ALLOWABLE WILL BE ASSIGNED TO THIS COMPLETION UNTIL ALL INTERESTS HAVE BEEN CONSOLIDATED  
OR A NON-STANDARD UNIT HAS BEEN APPROVED BY THE DIVISION



### 17 OPERATOR CERTIFICATION

I hereby certify that the information contained herein is true and complete to the best of my knowledge and belief.

*C. H. Harper*  
Signature

C. H. Harper  
Printed Name

Permits Supervisor  
Title

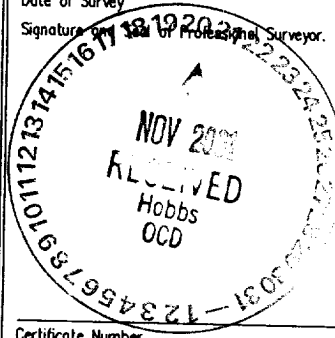
11-19-01  
Date

### 18 SURVEYOR CERTIFICATION

I hereby certify that the well location shown on this plat was plotted from field notes of actual surveys made by me or under my supervision, and that the same is true and correct to the best of my belief.

Date of Survey

Signature of Professional Surveyor



1.3 Miles W of Buckeye, New Mexico.

File No. EMA-2018.dwg

11-19-01 / ACR