

30-025-29431

NO. OF COPIES RECEIVED	
DISTRIBUTION	
SANTA FE	
FILE	
U.S.G.S.	
LAND OFFICE	
OPERATOR	

NEW MEXICO OIL CONSERVATION COMMISSION

Form C-101
Revised 1-1-65

5A. Indicate Type of Lease	
STATE <input checked="" type="checkbox"/>	FEE <input type="checkbox"/>
5. State Oil & Gas Lease No.	
B-1520-1	

APPLICATION FOR PERMIT TO DRILL, DEEPEN, OR PLUG BACK

1a. Type of Work		7. Unit Agreement Name	
		North	
b. Type of Well		8. Farm or Lease Name	
DRILL <input checked="" type="checkbox"/>	DEEPEN <input type="checkbox"/>	Vacuum Abo Unit	
OIL WELL <input checked="" type="checkbox"/>	GAS WELL <input type="checkbox"/>		
OTHER <input type="checkbox"/>	SINGLE ZONE <input checked="" type="checkbox"/>	9. Well No.	
		287	
2. Name of Operator		10. Field and Pool, or Wildcat	
Mobil Producing Texas & New Mexico Inc.		North Vacuum Abo	
3. Address of Operator			
P. O. Box 633, Midland, Texas 79702			
4. Location of Well		12. County	
UNIT LETTER M	LOCATED 660	Lea	
FEEET FROM THE South	LINE		
AND 780	FEET FROM THE West		
LINE OF SEC. 26	TWP. 17-S		
RGE. 34-E	NMPM		
19. Proposed Depth		19A. Formation	
9,000'		Abo	
20. Rotary or C.T.			
Rotary			
21. Elevations (Show whether DF, RT, etc.)		22. Approx. Date Work will start	
4027'		ASAP	
21A. Kind & Status Plug. Bond		21B. Drilling Contractor	
On File		Unknown	

PROPOSED CASING AND CEMENT PROGRAM

SIZE OF HOLE	SIZE OF CASING	WEIGHT PER FOOT	SETTING DEPTH	SACKS OF CEMENT	EST. TOP
17-1/2"	13-3/8"	48#	400'	Circulate	to Surface
12-1/4"	8-5/8"	28# & 32#	0-5000'	Circulate	to Surface
7-7/8"	5-1/2"	15.5# & 17#	0-TD	Circulate	to Surface

Blowout Preventer Sketch Attached

Permit Expires 6 Months From Approval
Date Unless Drilling Underway.

IN ABOVE SPACE DESCRIBE PROPOSED PROGRAM: IF PROPOSAL IS TO DEEPEN OR PLUG BACK, GIVE DATA ON PRESENT PRODUCTIVE ZONE AND PROPOSED NEW PRODUCTIVE ZONE. GIVE BLOWOUT PREVENTER PROGRAM, IF ANY.

I hereby certify that the information above is true and complete to the best of my knowledge and belief.

Signed C. C. Smith / for G. E. Tate Title Env. & Regulatory Manager Date 9-26-85

(This space for State Use)

ORIGINAL SIGNED BY JERRY SEXTON

OCT 2 - 1985

APPROVED BY DISTRICT 1 SUPERVISOR TITLE DATE

CONDITIONS OF APPROVAL, IF ANY:

RECEIVED
OCT - 1 1985
O.C.D.
HOBBS OFFICE

All distances must be from the outer boundaries of the Section.

Operator Mobil Producing TX & NM Inc.			Lease North Vacuum Abo Unit		Well No. 287
Unit Letter M	Section 26	Township 17-S	Range 34-E	County Lea	

Actual Footage Location of Well:

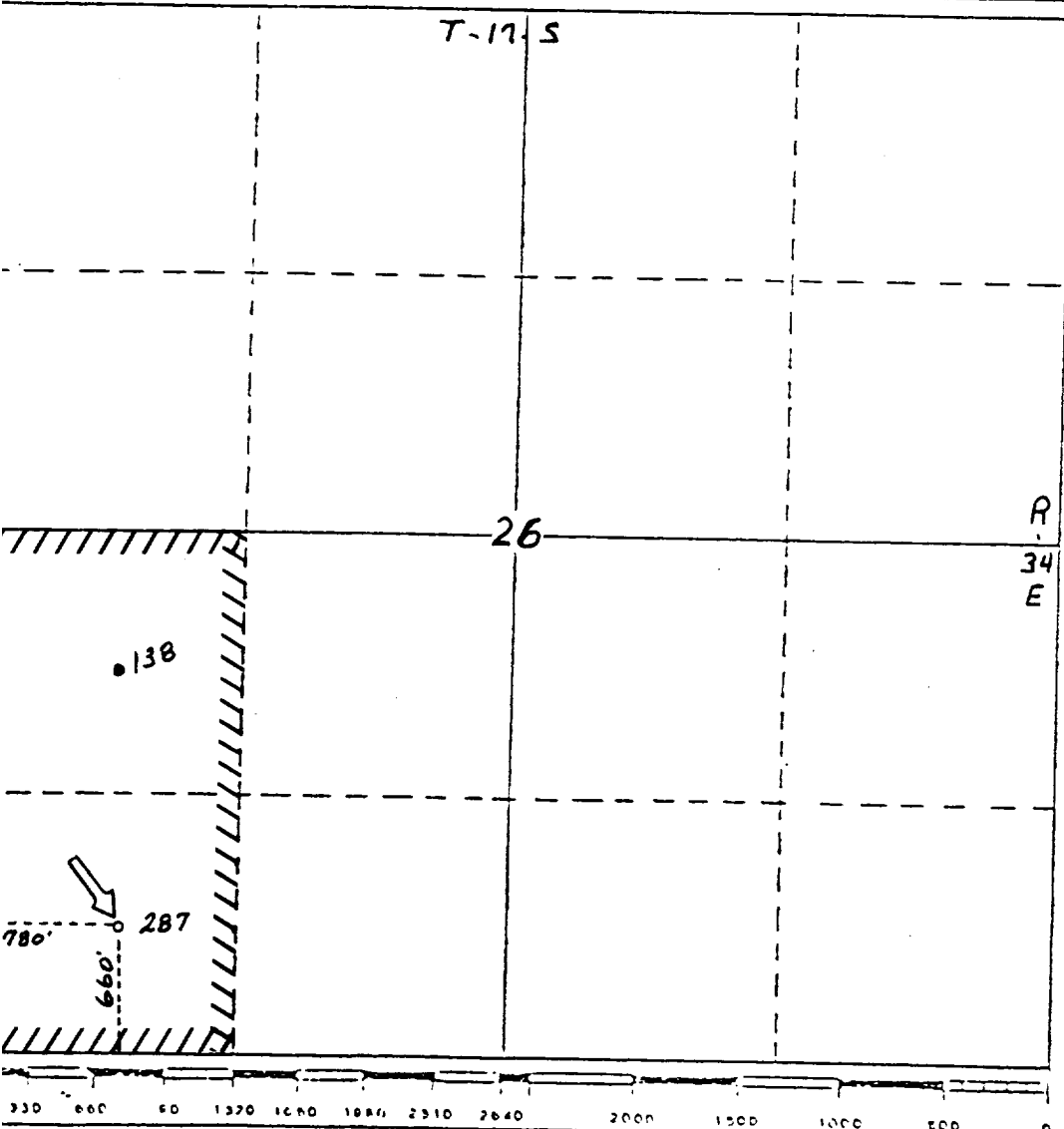
660	feet from the South	line and 780	feet from the West	line
Ground Level Elev. 4027'	Producing Formation Abo	Pool North Vacuum Abo	Dedicated Acreage: (2 Wells) 80 Acres	

1. Outline the acreage dedicated to the subject well by colored pencil or hachure marks on the plat below.
2. If more than one lease is dedicated to the well, outline each and identify the ownership thereof (both as to working interest and royalty).
3. If more than one lease of different ownership is dedicated to the well, have the interests of all owners been consolidated by communitization, unitization, force-pooling, etc?

☒ Yes ☐ No If answer is "yes," type of consolidation Unitized

If answer is "no," list the owners and tract descriptions which have actually been consolidated. (Use reverse side of this form if necessary.) _____

No allowable will be assigned to the well until all interests have been consolidated (by communitization, unitization, forced-pooling, or otherwise) or until a non-standard unit, eliminating such interests, has been approved by the Division.



CERTIFICATION

I hereby certify that the information contained herein is true and complete to the best of my knowledge and belief.

C. C. Smith / for

Name

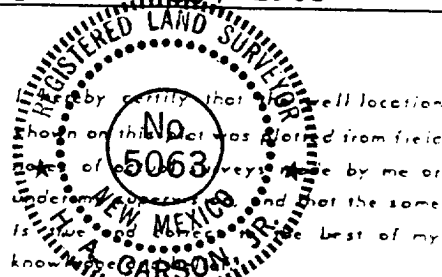
G. E. Tate

Position

Env. & Regulatory Manager
Company

Mobil Producing TX & NM Inc.
Date

September 23, 1985



H. A. Carson Jr

Date Surveyed

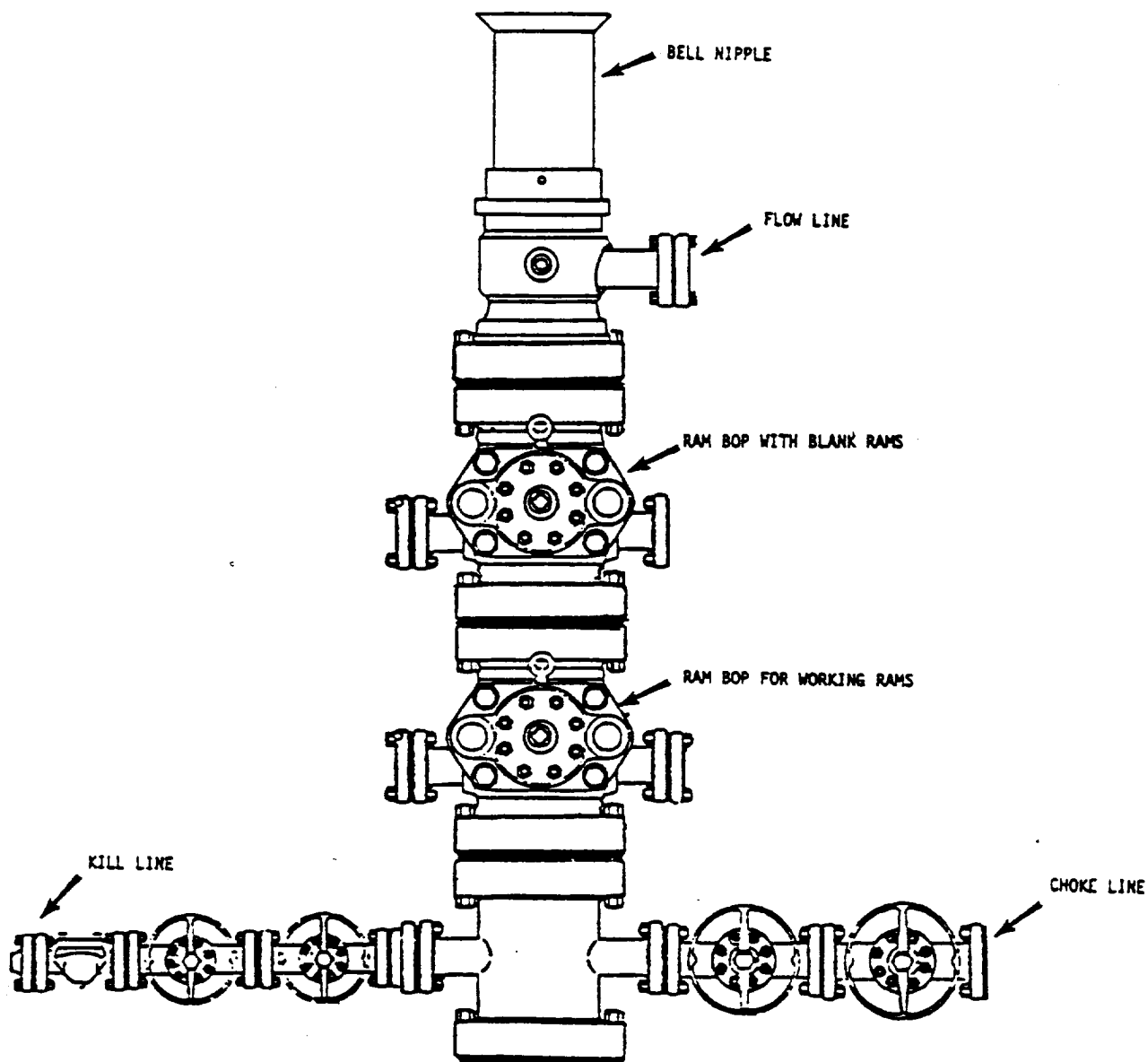
9-16-85

Registered Professional Engineer
and/or Land Surveyor

H. A. Carson Jr
Certificate No.

5063

RECEIVED
OCT - 1 1985
O.C.D.
HOBBS OFFICE



*NOTE: ALL VALVES ARE METAL-TO-METAL SEAL AND FLANGED. ALL COMPONENTS MUST MEET ABOVE MINIMUM PRESSURE RATINGS. ALL COMPONENTS TO BE TESTED TO RATED PRESSURE AFTER ASSEMBLY AND BEFORE FURTHER DOWNHOLE OPERATIONS MAY BE CONDUCTED.

**Mobil Producing
Texas & New Mexico Inc.**

MOBIL NO. 287 NORTH VACUUM A60
(LEASE)
Lea COUNTY, NEW MEXICO STATE

BLOWOUT PREVENTER ASSEMBLY

(11 IN. 5000 PSI WP=1)

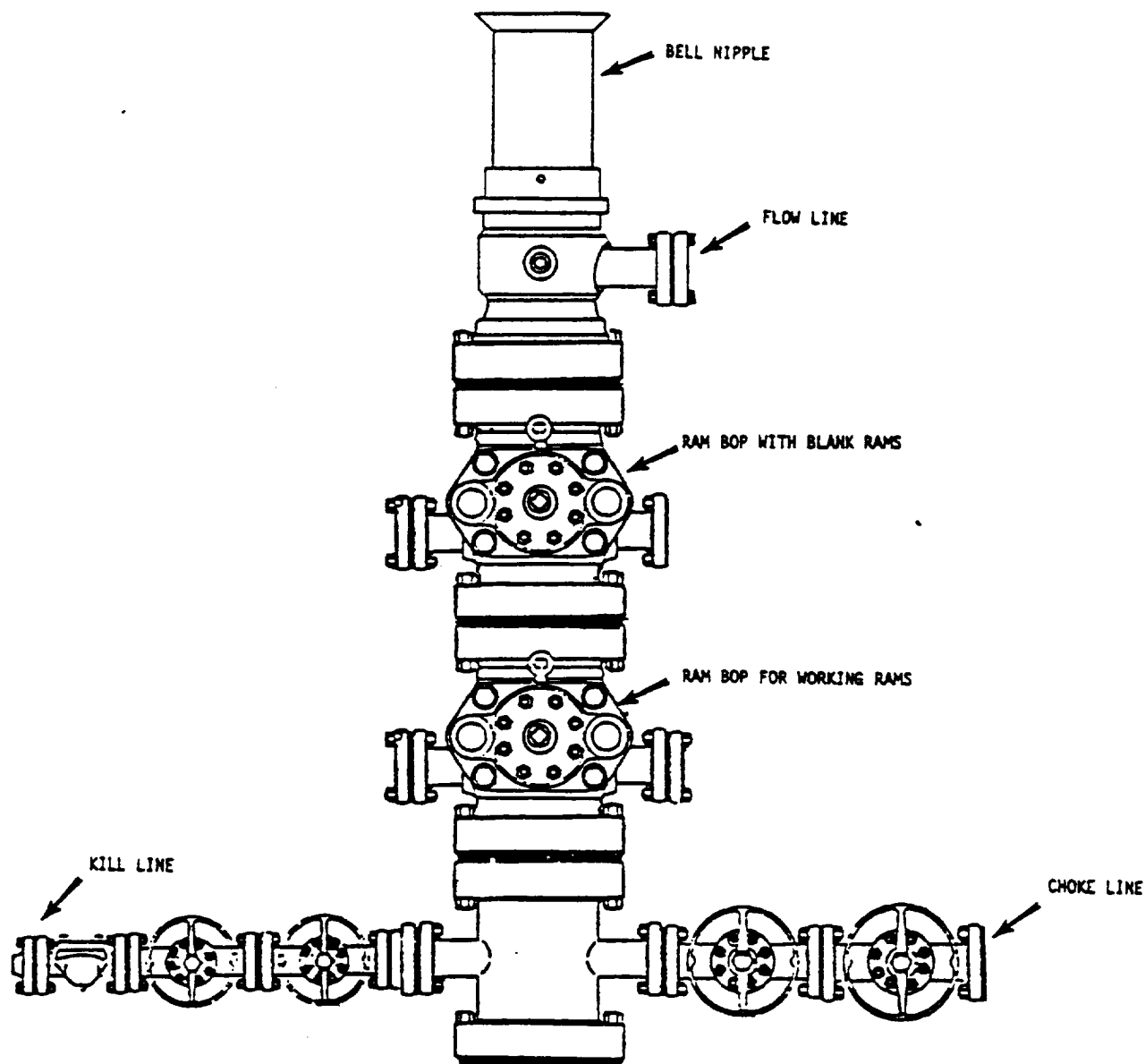
Scale

Date
Drawn
Checked
Approved
Revised

RECEIVED

OCT - 1 1985

O.C.D.
HOBBS OFFICE



*NOTE: ALL VALVES ARE METAL-TO-METAL SEAL AND FLANGED. ALL COMPONENTS MUST MEET ABOVE MINIMUM PRESSURE RATINGS. ALL COMPONENTS TO BE TESTED TO RATED PRESSURE AFTER ASSEMBLY AND BEFORE FURTHER DOWNHOLE OPERATIONS MAY BE CONDUCTED.

Mobil Producing Texas & New Mexico Inc.		Scale
MOBIL NO. <u>287</u> <u>North Vacuum Abo</u> (LEASE), <u>Lea</u> COUNTY, <u>New Mexico</u> STATE		Date Drawn Checked Approved Revised
BLOWOUT PREVENTER ASSEMBLY (13 5/8 IN. 3000 PSI WP*)		

ELF
FEB 25 1986

RECEIVED
OCT - 1 1985
O.C.D.
HOBBS OFFICE