

CONDITIONS OF APPROVAL, IF ANY:

RECEIVED
OCT - 1 1985
O.C. Office
HOBBY OFFICE

All distances must be from the outer boundaries of the Section.

Operator Mobil Producing TX & NM Inc.		Lease North Vacuum Abo Unit		Well No. 289
Well Letter G	Section 27	Township 17-S	Range 34-E	County Lea

Actual Footage Location of Well:

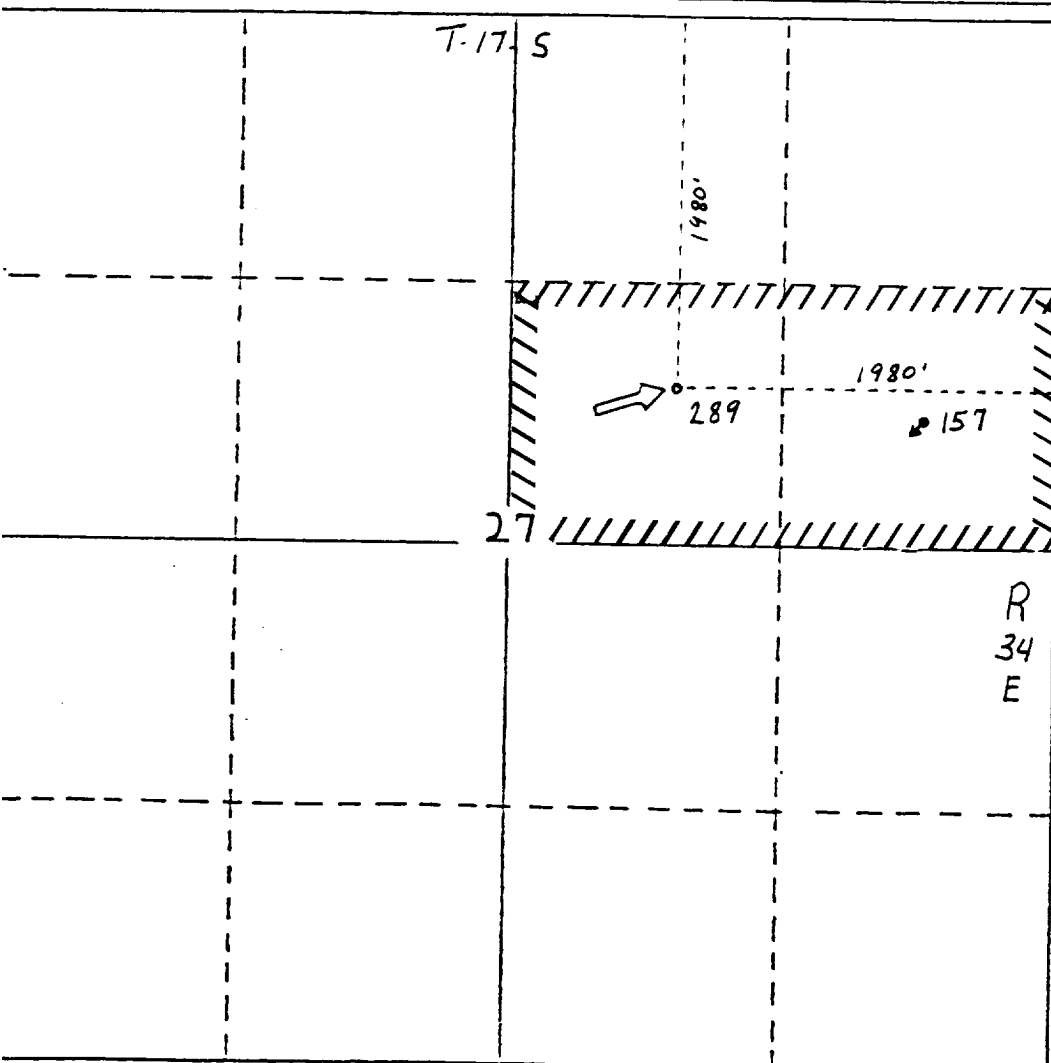
1980 feet from the North line and 1980 feet from the East line	Pool North Vacuum Abo	Dedicated Acreage: (2 Wells) 80 Acres
Ground Level Elev. 4042'	Producing Formation Abo	

1. Outline the acreage dedicated to the subject well by colored pencil or hatchure marks on the plat below.
2. If more than one lease is dedicated to the well, outline each and identify the ownership thereof (both as to working interest and royalty).
3. If more than one lease of different ownership is dedicated to the well, have the interests of all owners been consolidated by communitization, unitization, force-pooling, etc?

☒ Yes ☐ No If answer is "yes," type of consolidation Unitized

If answer is "no," list the owners and tract descriptions which have actually been consolidated. (Use reverse side of this form if necessary.)

No allowable will be assigned to the well until all interests have been consolidated (by communitization, unitization, forced-pooling, or otherwise) or until a non-standard unit, eliminating such interests, has been approved by the Division.



CERTIFICATION

I hereby certify that the information contained herein is true and complete to the best of my knowledge and belief.

C.C. Smith / for

Name

G. E. Tate

Position

Env. & Regulatory Manager

Company

Mobil Producing TX & NM Inc.

Date

September 23, 1985

I hereby certify that the location shown on this plat was plotted from field notes of actual surveys made by me or under my supervision, and that the same is true to the best of my knowledge.

H.A. Carson Jr

Date Surveyed

9-16-85

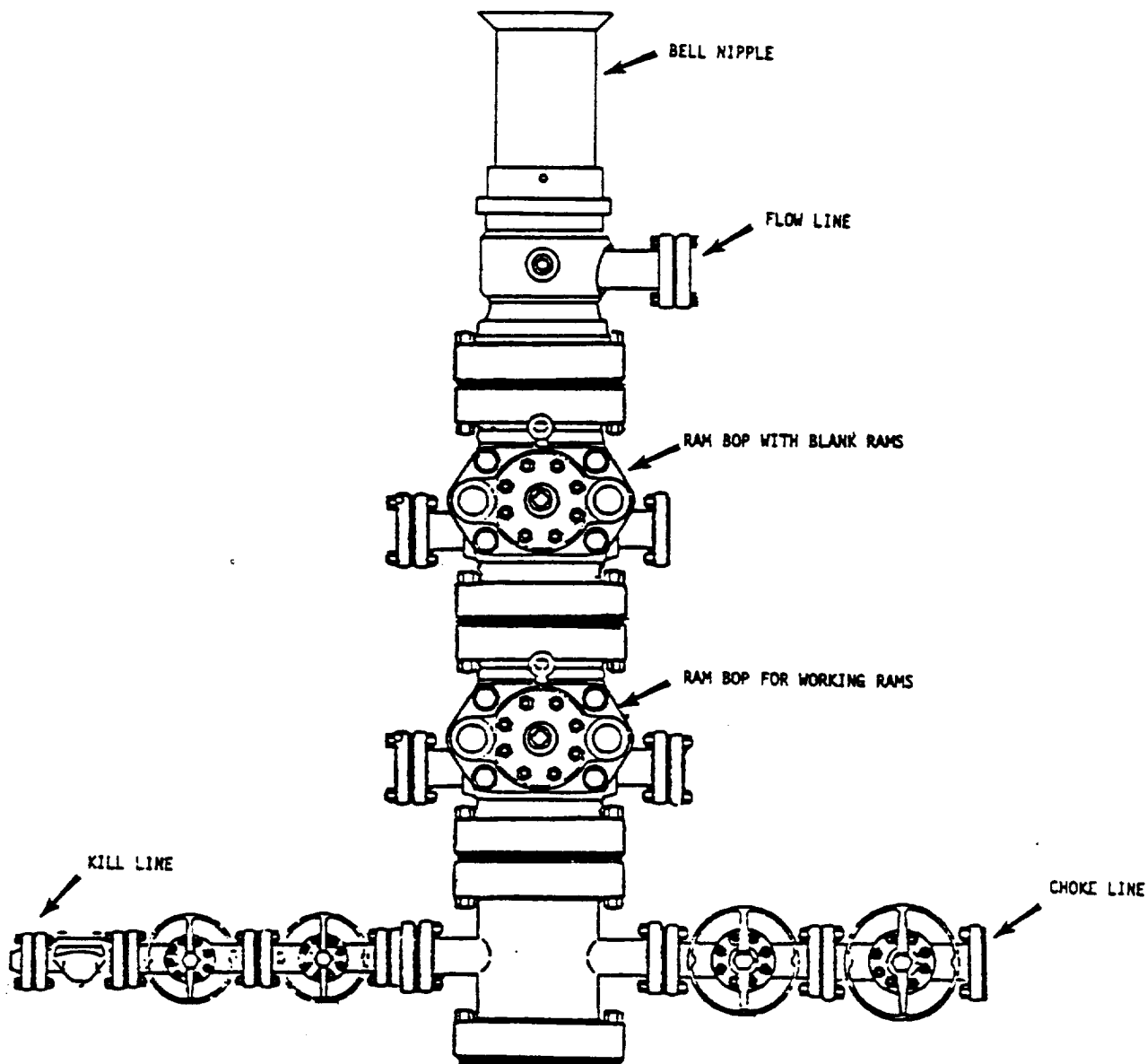
Registered Professional Engineer and/or Land Surveyor

H.A. Carson Jr

Certificate No.

5063

RECEIVED
OCT - 1 1985
OFFICE
HOBBS



*NOTE: ALL VALVES ARE METAL-TO-METAL SEAL AND FLANGED. ALL COMPONENTS MUST MEET ABOVE MINIMUM PRESSURE RATINGS. ALL COMPONENTS TO BE TESTED TO RATED PRESSURE AFTER ASSEMBLY AND BEFORE FURTHER DOWNHOLE OPERATIONS MAY BE CONDUCTED.

Mobil Producing Texas & New Mexico Inc.	
MOBIL NO. <u>289</u>	<u>NORTH Vacuum Abo</u> (LEASE)
<u>Lee</u>	COUNTY, <u>NEW MEXICO</u> STATE
BLOWOUT PREVENTER ASSEMBLY (1) IN. 5000 PSI WP*	

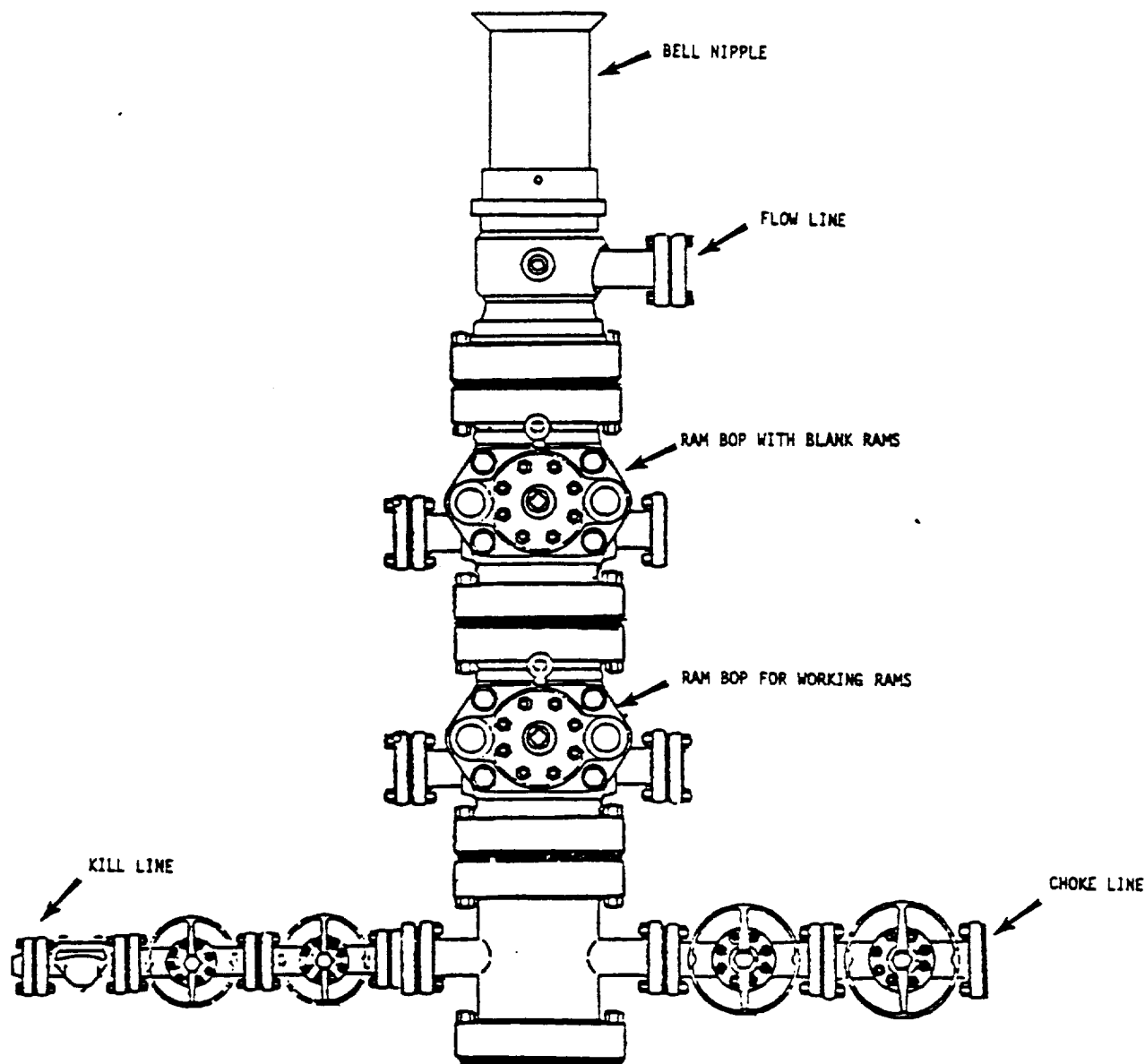
Scale

Date
Drawn
Checked
Approved
Revised

RECEIVED

OCT - 1 1985

O.C.D.
HOBBY OFFICE



*NOTE: ALL VALVES ARE METAL-TO-METAL SEAL AND FLANGED. ALL COMPONENTS MUST MEET ABOVE MINIMUM PRESSURE RATINGS. ALL COMPONENTS TO BE TESTED TO RATED PRESSURE AFTER ASSEMBLY AND BEFORE FURTHER DOWNHOLE OPERATIONS MAY BE CONDUCTED.

Mobil Producing Texas & New Mexico Inc.

MOBIL NO. 289 North Vacuum Ab
(LEASE),
Lea COUNTY, New Mexico STATE

BLOWOUT PREVENTER ASSEMBLY
(10⁵/BIN. 3000 PSI WP*)

Scale

Date
Drawn
Checked
Approved
Revised

ELF

RECEIVED

OCT - 1 1985

OSI OFFICE
HOBBS OFFICE