

30-025-29434

NO. OF COPIES RECEIVED

DISTRIBUTION

SANTA FE

FILE

U.S.G.S.

LAND OFFICE

OPERATOR

NEW MEXICO OIL CONSERVATION COMMISSION

Form C-101
Revised 1-1-65

5A. Indicate Type of Lease

STATE ☒FEE ☐

5. State Oil & Gas Lease No.

B-1520-1 3196

APPLICATION FOR PERMIT TO DRILL, DEEPEN, OR PLUG BACK

1a. Type of Work

DRILL ☒DEEPEN ☐PLUG BACK ☐

b. Type of Well

OIL WELL ☒GAS WELL ☐

OTHER

SINGLE ZONE ☒MULTIPLE ZONE ☐

2. Name of Operator

Mobil Producing Texas & New Mexico Inc.

3. Address of Operator

P. O. Box 633, Midland, Texas 79702

4. Location of Well

UNIT LETTER O

LOCATED 460

FEET FROM THE South

LINE

AND 1980

FEET FROM THE East

LINE OF SEC. 22

TWP. 17-S

RGE. 34-E

NMPM

7. Unit Agreement Name

North

Vacuum Abo Unit

8. Farm or Lease Name

9. Well No.

290

10. Field and Pool, or Wildcat

North Vacuum Abo

12. County

Lea

19. Proposed Depth

9,000'

19A. Formation

Abo

20. Rotary or C.T.

Rotary

21. Elevations (Show whether DF, RT, etc.)

4032'

21A. Kind & Status Plug. Bond

On File

21B. Drilling Contractor

Unknown

22. Approx. Date Work will start

ASAP

PROPOSED CASING AND CEMENT PROGRAM

SIZE OF HOLE

SIZE OF CASING

WEIGHT PER FOOT

SETTING DEPTH

SACKS OF CEMENT

EST. TOP

17-1/2"

13-3/8"

48#

400'

Circulate

to Surface

12-1/4"

8-5/8"

28# & 32#

0-5000'

Circulate

to Surface

7-7/8"

5-1/2"

15.5# & 17#

0-TD

Circulate

to Surface

Blowout Preventer Sketch Attached

Permit Expires 6 Months From Approval
Date Unless Drilling Underway.

IN ABOVE SPACE DESCRIBE PROPOSED PROGRAM: IF PROPOSAL IS TO DEEPEN OR PLUG BACK, GIVE DATA ON PRESENT PRODUCTIVE ZONE AND PROPOSED NEW PRODUCTIVE ZONE, GIVE BLOWOUT PREVENTER PROGRAM, IF ANY.

I hereby certify that the information above is true and complete to the best of my knowledge and belief.

Signed C.C. Smith / for G. E. Tate Title Env. & Regulatory Manager Date 9-26-85

(This space for State Use)

ORIGINAL SIGNED BY JERRY SEXTON

APPROVED BY DISTRICT SUPERVISOR TITLE

DATE

OCT 2 - 1985

CONDITIONS OF APPROVAL, IF ANY:

All distances must be from the outer boundaries of the Section.

Operator Mobil Producing TX & NM Inc.		Lease North Vacuum Abo Unit		Well No. 290
Well Letter O	Section 22	Township 17-S	Range 34-E	County Lea

Actual Footage Location of Well:

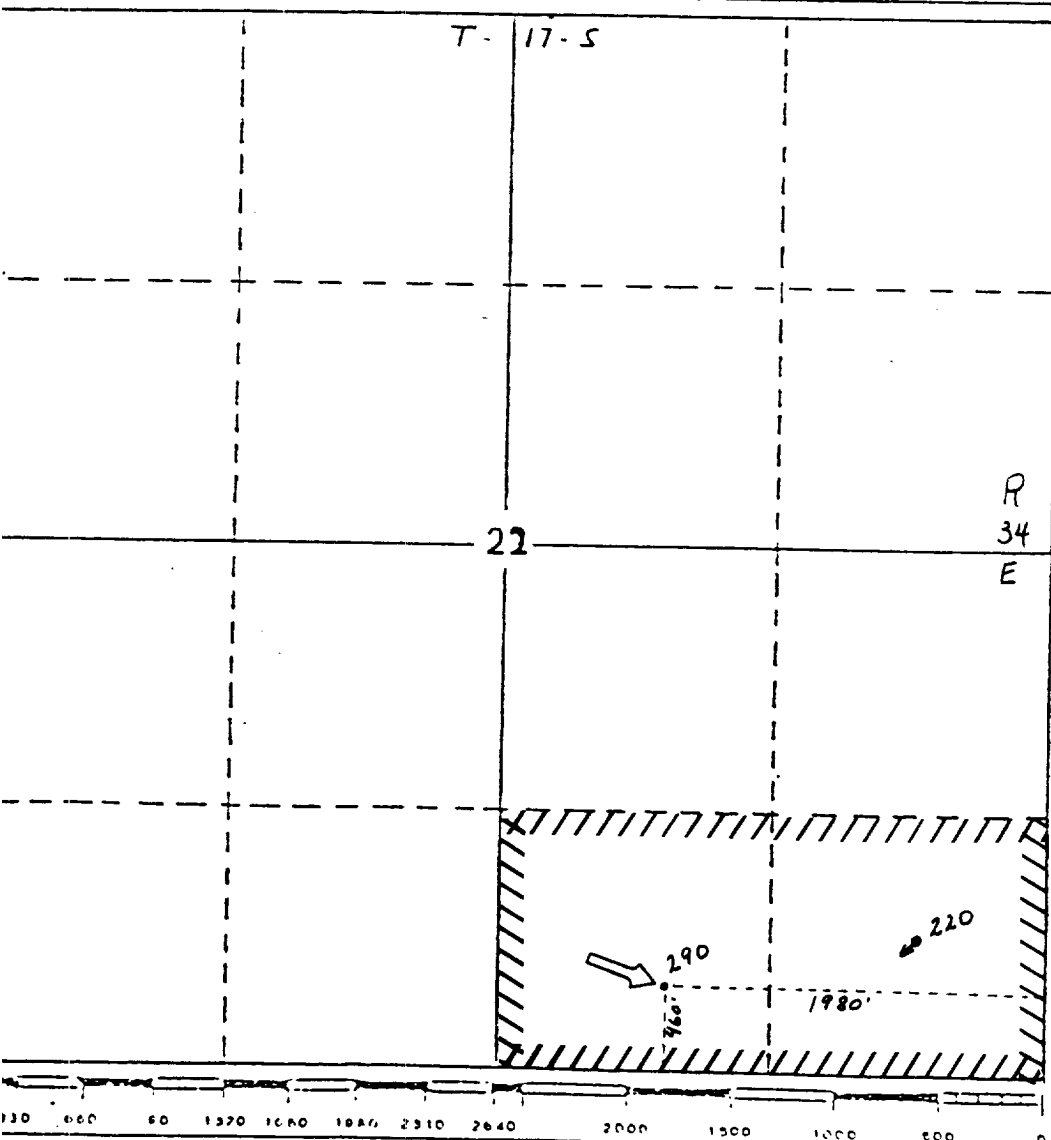
460	feet from the South	line and 1980	feet from the East	line
Ground Level Elev. 4032'	Producing Formation Abo	Pool North Vacuum Abo	Dedicated Acreage: (2 Wells) 80 Acres	

1. Outline the acreage dedicated to the subject well by colored pencil or hatchure marks on the plat below.
2. If more than one lease is dedicated to the well, outline each and identify the ownership thereof (both as to working interest and royalty).
3. If more than one lease of different ownership is dedicated to the well, have the interests of all owners been consolidated by communitization, unitization, force-pooling, etc?

☒ Yes ☐ No If answer is "yes," type of consolidation Unitized

If answer is "no," list the owners and tract descriptions which have actually been consolidated. (Use reverse side of this form if necessary.)

No allowable will be assigned to the well until all interests have been consolidated (by communitization, unitization, forced-pooling, or otherwise) or until a non-standard unit, eliminating such interests, has been approved by the Division.



CERTIFICATION

I hereby certify that the information contained herein is true and complete to the best of my knowledge and belief.

C.C. Smith

Name

G. E. Tate

Position

Env. & Regulatory Manager

Company

Mobil Producing TX & NM Inc.

Date

September 23, 1985

I hereby certify that the well location shown on this plat was plotted from field notes of actual surveys made by me or under my supervision, and that the same is true and correct to the best of my knowledge and belief.

H.A. Carson Jr.

Date Surveyed

9-16-85

Registered Professional Engineer and/or Land Surveyor

H. A. Carson Jr.

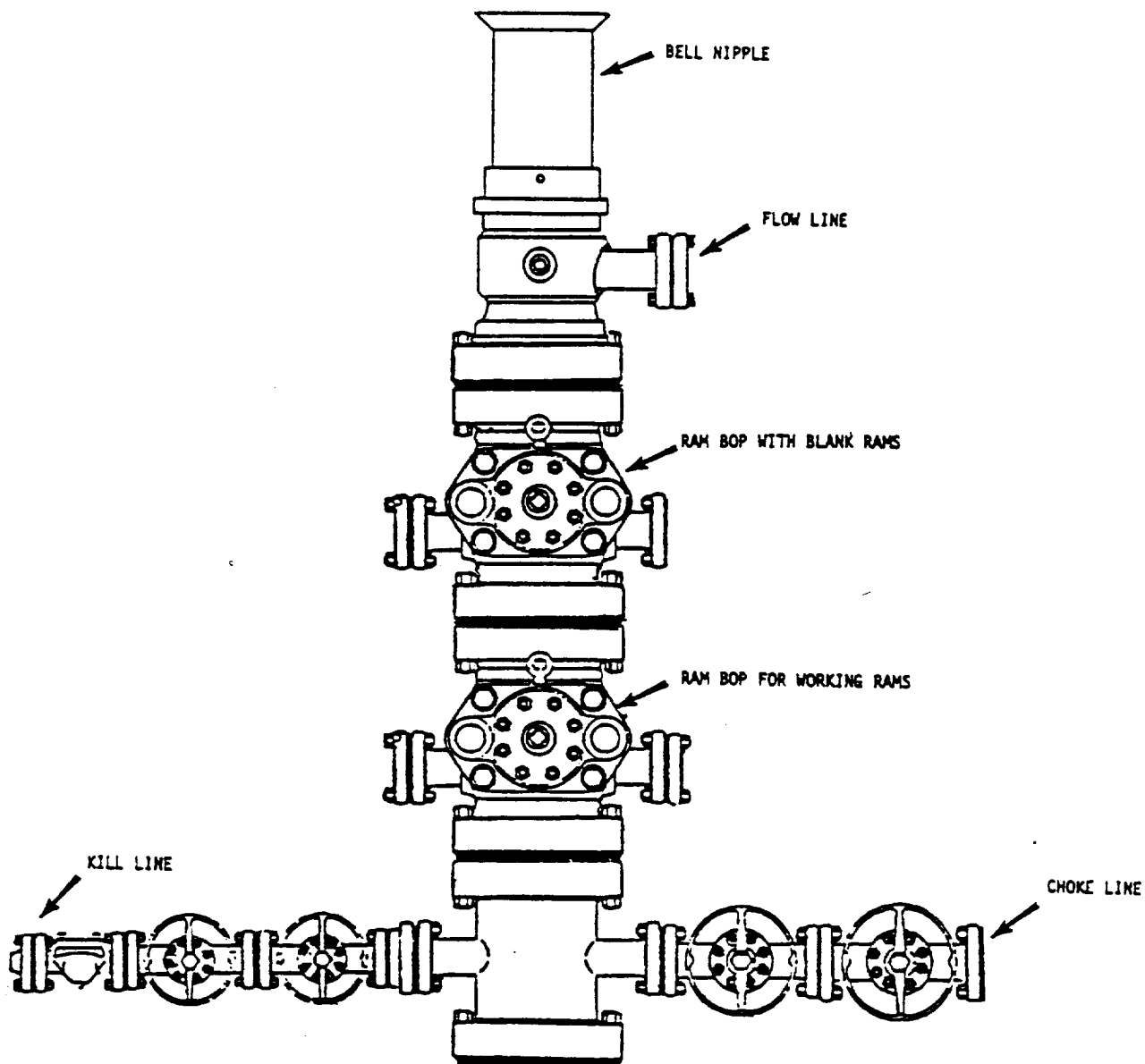
Certificate No.

5063

RECEIVED

OCT - 1 1985

**O.C.D.
HOBBS OFFICE**



*NOTE: ALL VALVES ARE METAL-TO-METAL SEAL AND FLANGED. ALL COMPONENTS MUST MEET ABOVE MINIMUM PRESSURE RATINGS. ALL COMPONENTS TO BE TESTED TO RATED PRESSURE AFTER ASSEMBLY AND BEFORE FURTHER DOWNHOLE OPERATIONS MAY BE CONDUCTED.

Mobil Producing Texas & New Mexico Inc.

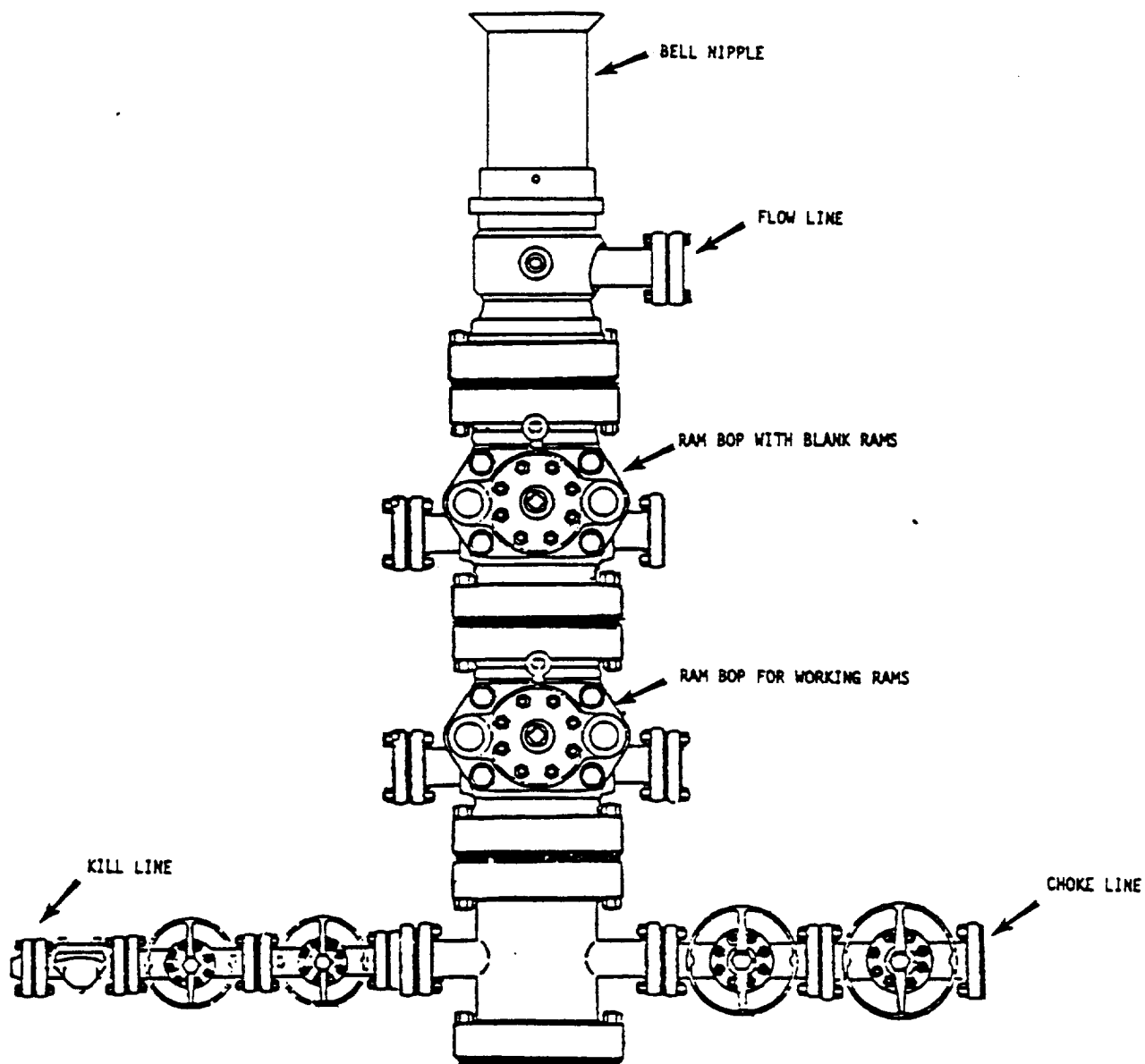
MOBIL NO. 290 NORTH VACUUM A.B.O.
(LEASE)
Lea COUNTY, NEW MEXICO STATE

BLOWOUT PREVENTER ASSEMBLY

(11 IN. 5000 PSI WP*)

Scale

Date
Drawn
Checked
Approved
Revised



*NOTE: ALL VALVES ARE METAL-TO-METAL SEAL AND FLANGED. ALL COMPONENTS MUST MEET ABOVE MINIMUM PRESSURE RATINGS. ALL COMPONENTS TO BE TESTED TO RATED PRESSURE AFTER ASSEMBLY AND BEFORE FURTHER DOWNHOLE OPERATIONS MAY BE CONDUCTED.

Mobil Producing Texas & New Mexico Inc.		Scale _____
MOBIL NO. <u>290</u> <u>North Vacuum Abo</u> (LEASE), <u>Lea</u> COUNTY, <u>New Mexico</u> STATE		Date Drawn Checked Approved Revised
BLOWOUT PREVENTER ASSEMBLY (1 3/4" IN. 3000 PSI WP*)		

11 FEB 24 1985

RECEIVED
OCT - 1 1985
OCCO
HOBBS OFFICE