

RECEIVED
OCT - 1 1985
O.C.D.
HOBBS OFFICE

COMPLETIONS SEC 22 TWP 17S RGE 34E
PI# 30-T-0013 03/17/86 30-025-29436-0000 PAGE 2

MOBIL PRODUCING TX & NM D DO
292 NORTH VACUUM (ABO) UNIT

PRODUCTION TEST DATA

PTS 24BO 10HRS
ABO PERF W/ 1/FT 8701- 8752 GROSS 004
PERF 8701- 8704 8732- 8743 8750- 8752
ACID 8701- 8752 4750GALS
15% NEFE HCL
SWBD 24 BO + 53 BLW

PTP 13BOPD
ABO PERF 8701- 8752 GROSS 005
PPD 13 BO + 27 BLWPD

LOGS AND SURVEYS /INTERVAL, TYPE/

LOGS 0- 8850 CNL 0- 8850 FDC 5000- 8850 DILL
LOGS 5000- 8850 MLL 5000- 8850 SONL 8328- 8828 GR
LOGS 8328- 8828 CCL

DRILLING PROGRESS DETAILS

MOBIL PRODUCING TX & NM
BOX 633
MIDLAND, TX 79702
915-684-8211
10/02 LOC/1985/
12/31 DRLG 7440
01/06 8850 TD, WOCT
01/21 8850 TD, PB 8828, PREP TEST
01/22 8850 TD, PB 8828, SWBG
02/05 8850 TD, PB 8828, TSTG
03/12 TD REACHED 01/05/86 RIG REL 01/06/86
8850 TD, PB 8828
COMP 2/11/86, IPP 18 BO, 28 MCFGPD, 19
BWP, GTY 37.5, GOR 1556
PROD ZONE - ABO 8701-8752
NO CORES OR DSTS RPTD

All distances must be from the outer boundaries of the Section.

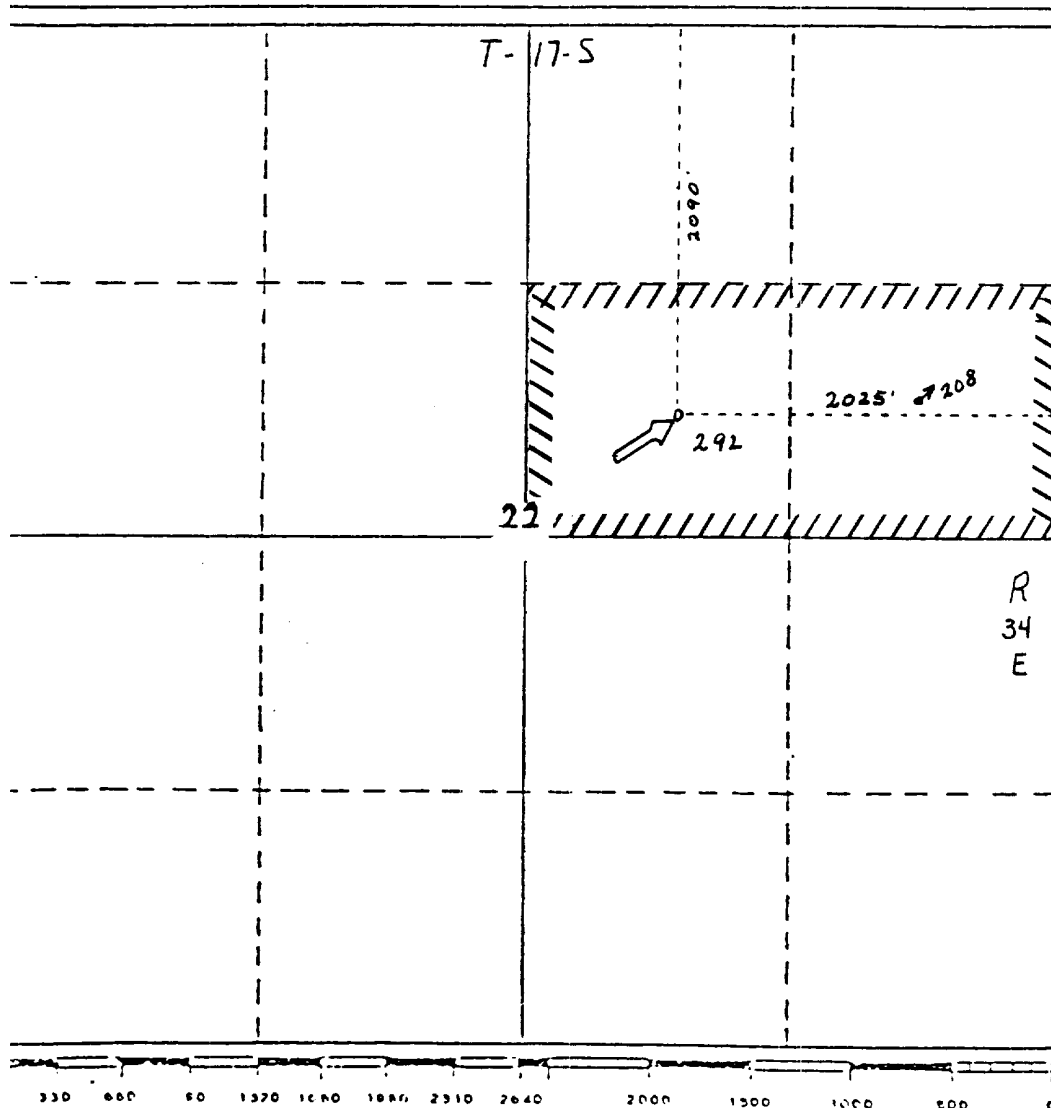
Operator Mobil Producing TX & NM Inc.		Lease North Vacuum Abo Unit		Well No. 292
Unit Letter G	Section 22	Township 17-S	Range 34-E	County Lea
Actual Footage Location of Well: 2090 feet from the North line and 2025 feet from the East line				
Ground Level Elev. 4045'	Producing Formation Abo	Pool North Vacuum Abo	Dedicated Acreage: (2 Wells) 80 Acres	

1. Outline the acreage dedicated to the subject well by colored pencil or hatchure marks on the plat below.
2. If more than one lease is dedicated to the well, outline each and identify the ownership thereof (both as to working interest and royalty).
3. If more than one lease of different ownership is dedicated to the well, have the interests of all owners been consolidated by communitization, unitization, force-pooling, etc?

☒ Yes ☐ No If answer is "yes," type of consolidation Unitized

If answer is "no," list the owners and tract descriptions which have actually been consolidated. (Use reverse side of this form if necessary.)

No allowable will be assigned to the well until all interests have been consolidated (by communitization, unitization, forced-pooling, or otherwise) or until a non-standard unit, eliminating such interests, has been approved by the Division.



CERTIFICATION

I hereby certify that the information contained herein is true and complete to the best of my knowledge and belief.

C. E. Tate

Name

G. E. Tate

Position

Env. & Regulatory Manager

Company

Mobil Producing TX & NM Inc.

Date

September 23, 1985

I hereby certify that the well location shown on this plat was plotted from field notes of actual surveys made by me or under my supervision, and that the same is true to the best of my knowledge.

REGISTERED LAND SURVEYOR
No. 5063
NEW MEXICO
CARSON, JENKINS

Date Surveyed

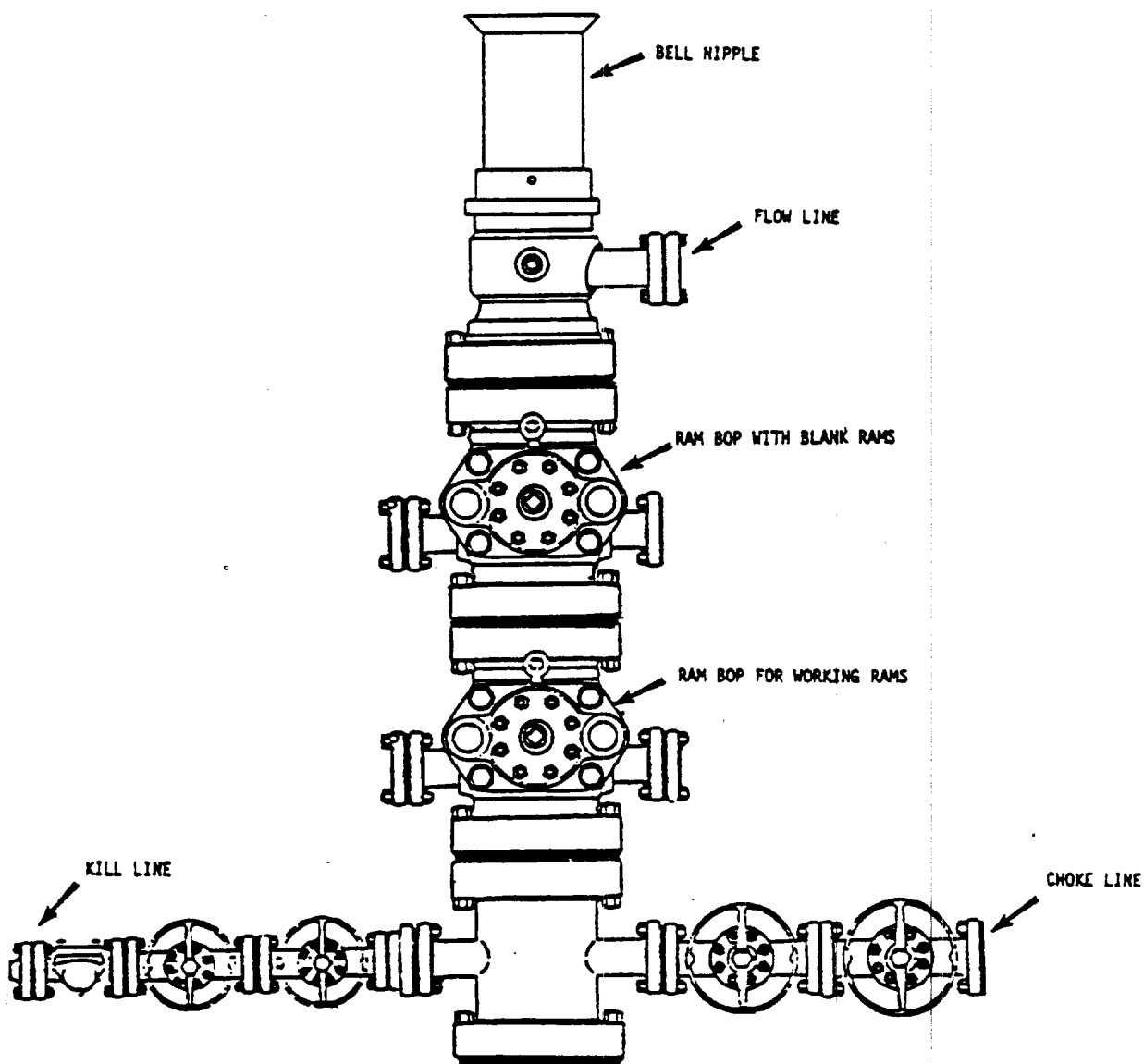
7-16-85

Registered Professional Engineer
and/or Land Surveyor*H. A. Carson*

Certificate No.

5063

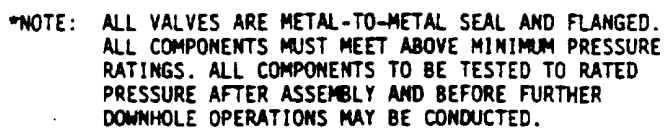
RECEIVED
OCT - 1 1985
O.C.D.
HOBBES OFFICE



*NOTE: ALL VALVES ARE METAL-TO-METAL SEAL AND FLANGED. ALL COMPONENTS MUST MEET ABOVE MINIMUM PRESSURE RATINGS. ALL COMPONENTS TO BE TESTED TO RATED PRESSURE AFTER ASSEMBLY AND BEFORE FURTHER DOWNHOLE OPERATIONS MAY BE CONDUCTED.

Mobil Producing Texas & New Mexico Inc.		Scale	
		Date Drawn Checked Approved Revised	
MOBIL NO. <u>292</u> <u>NORTH VACUUM APO</u> (LEASE) <u>Lea</u> COUNTY, <u>NEW MEXICO</u> STATE			
BLOWOUT PREVENTER ASSEMBLY <u>11</u> IN. <u>5000</u> PSI WP*)			

RECEIVED
OCT - 1 1985
O.C.D.
HOBBS OFFICE



BLOWOUT PREVENTER ASSEMBLY
(1 35/8 IN. 3000 PSI WP)

Date _____
 Drawn _____
 Checked _____
 Approved _____
 Revised _____

ELF

RECEIVED

OCT - 1 1985

O.C.D.
HOBB'S OFFICE