

Submit to Appropriate
District Office
State Lease - 6 copies
Fee Lease - 5 copies

State of New Mexico
Energy, Minerals and Natural Resources Department

Form C-101
Revised 1-1-89

OIL CONSERVATION DIVISION

P.O. Box 2088
Santa Fe, New Mexico 87504-2088

DISTRICT I
P.O. Box 1980, Hobbs, NM 88240

DISTRICT II
P.O. Drawer DD, Artesia, NM 88210

DISTRICT III
1000 Rio Brazos Rd., Aztec, NM 87410

API NO. (assigned by OCD on New Wells)
30-025-29541

5. Indicate Type of Lease
STATE ☐ FEE ☒

6. State Oil & Gas Lease No.

APPLICATION FOR PERMIT TO DRILL, DEEPEN, OR PLUG BACK

1a. Type of Work:

DRILL ☐ RE-ENTER ☐ DEEPEN ☐ PLUG BACK ☒

b. Type of Well:

OIL WELL ☒ GAS WELL ☐ OTHER ☐

SINGLE ZONE ☐

MULTIPLE ZONE ☐

7. Lease Name or Unit Agreement Name

Humble City ADH

2. Name of Operator

YATES PETROLEUM CORPORATION

8. Well No.

1

3. Address of Operator

105 South Fourth Street - Artesia, NM 88210

9. Pool name or Wildcat

Undesignated

4. Well Location

Unit Letter 0 : 660 Feet From The South Line and 1980 Feet From The East Line

Section 11 Township 17S Range 34E 37 NMIM Lea County

10. Proposed Depth

11. Formation

San Andres

12. Rotary or C.T.

Pulling Unit

13. Elevations (Show whether DF, RT, GR, etc.)

3741.1' GR

14. Kind & Status Plug. Bond

Blanket

15. Drilling Contractor

N/A

16. Approx. Date Work will start

ASAP

17.

PROPOSED CASING AND CEMENT PROGRAM

SIZE OF HOLE	SIZE OF CASING	WEIGHT PER FOOT	SETTING DEPTH	SACKS OF CEMENT	EST. TOP
17-1/2"	13-3/8"	54.5#	445'	In place	
11"	8-5/8"	32#	4476'	In place	
7-7/8"	5-1/2"	23#	11903'	In place	

Propose to recompleat well in San Andres as follows:

- Pull pump and rods, nipple up BOP & TOOH w/tubing. Set CIBF at 7775'. Dump 35' of cement on top of CIBP.
- Perforate San Andres from 5291-6271' w/30 holes (1 SPF) as follows: 5291-5300' (10 holes); 5423, 24, 25, 29, 30 & 5431' (6 holes); 6238, 40, 42, 44, 46, 48, 50, 54, 55, 64, 65, 66, 70 & 6271' (14 holes).
- Straddle perforations 6238-6271' and acidize with 3000 gallons 20% NEFE HCL acid with ball sealers. Swab test.
- Straddle perforations 5423-5431' and acidize with 1000 gallons 20% NEFE HCL acid with ball sealers. Swab test.
- Straddle perforations 5291-5300' and acidize with 1500 gallons 20% NEFE HCL acid with ball sealers.
- Swab test. NOTE: If non-commercial, will plug and abandon well - procedure will follow. IN ABOVE SPACE DESCRIBE PROPOSED PROGRAM: IF PROPOSAL IS TO DEEPEN OR PLUG BACK, GIVE DATA ON PRESENT PRODUCTIVE ZONE AND PROPOSED NEW PRODUCTIVE ZONE. GIVE BLOWOUT PREVENTER PROGRAM, IF ANY.

I hereby certify that the information above is true and complete to the best of my knowledge and belief.

SIGNATURE

Rusty Klein

TITLE Production Clerk

DATE 9-30-93

TYPE OR PRINT NAME

TELEPHONE NO.

(This space for State Use)

Orig. Signed by
Paul Kautz
Geologist

APPROVED BY

TITLE

OCT 04 1993
DATE

CONDITIONS OF APPROVAL, IF ANY:

RECEIVED

OCT 04 1993

BOB HOBBS
OFFICE

OIL CONSERVATION DIVISION

P.O. Box 2088
Santa Fe, New Mexico 87504-2088

DISTRICT I
P.O. Box 1980, Hobbs, NM 88240

DISTRICT II
P.O. Drawer DD, Artesia, NM 88210

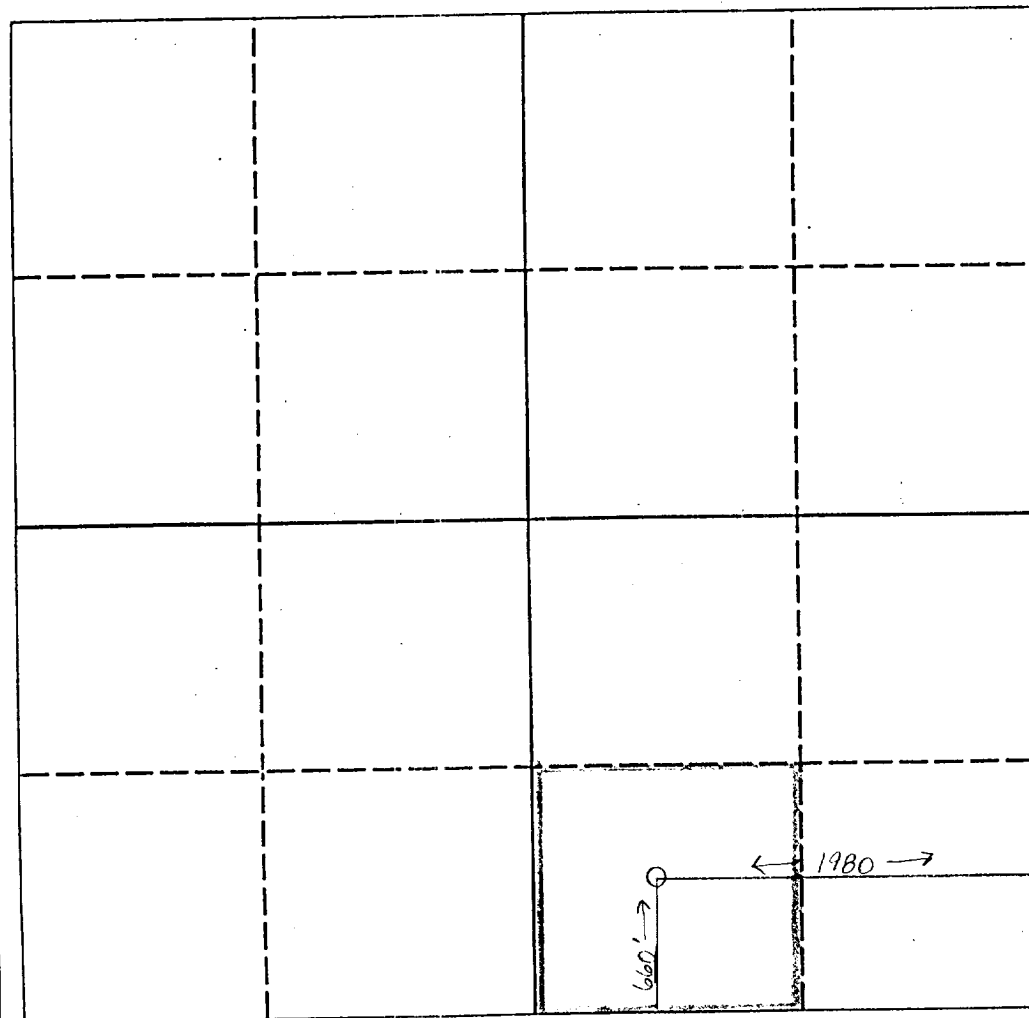
DISTRICT III
1000 Rio Brazos Rd., Aztec, NM 87410

WELL LOCATION AND ACREAGE DEDICATION PLAT

All Distances must be from the outer boundaries of the section

Operator YATES PETROLEUM CORPORATION			Lease Humble City ADH		Well No. 1
Unit Letter 0	Section 11	Township 17S	Range 37E	County Lea	NMPM
Actual Footage Location of Well: 660 feet from the South line and 1980 feet from the East line					
Ground level Elev. 3741.1'	Producing Formation San Andres		Pool Wildcat Undesignated	Dedicated Acreage: 40 Acres	

1. Outline the acreage dedicated to the subject well by colored pencil or hatchure marks on the plat below.
2. If more than one lease is dedicated to the well, outline each and identify the ownership thereof (both as to working interest and royalty).
3. If more than one lease of different ownership is dedicated to the well, have the interest of all owners been consolidated by communitization, unitization, force-pooling, etc.?
☐ Yes ☐ No If answer is "yes" type of consolidation _____
If answer is "no" list the owners and tract descriptions which have actually been consolidated. (Use reverse side of this form if necessary).
No allowable will be assigned to the well until all interests have been consolidated (by communitization, unitization, forced-pooling, or otherwise) or until a non-standard unit, eliminating such interest, has been approved by the Division.



0 330 660 990 1320 1650 1980 2310 2640 2000 1500 1000 500 0

OPERATOR CERTIFICATION

I hereby certify that the information contained herein is true and complete to the best of my knowledge and belief.

Signature
Rusty Klein
Printed Name
Rusty Klein
Position
Production Clerk
Company
YATES PETROLEUM CORPORATION
Date
September 30, 1993

SURVEYOR CERTIFICATION

I hereby certify that the well location shown on this plat was plotted from field notes of actual surveys made by me or under my supervision, and that the same is true and correct to the best of my knowledge and belief.

Date Surveyed
REFER TO ORIGINAL PLAT
Signature & Seal of
Professional Surveyor

Certificate No.

RECEIVED

OCT 04 1993

OCD HOBBS
OFFICE