

NEW MEXICO OIL CONSERVATION COMMISSION
WELL LOCATION AND ACREAGE DEDICATION PLAT

Form C-102
Supersedes C-128
Effective 1-1-65

All distances must be from the outer boundaries of the Section

Operator Pennzoil Company		Lease B.E. Shipp Estate		Well No. 2
Tract Letter B	Section 4	Township 17 South	Range 37 East	County Lea
Actual Footage Location of Well: 660 feet from the north line and 2130 feet from the east line				
Ground Level Elev. 3780.7	Producing Formation Strawn	Pool Shipp Strawn	Dedicated Acreage: 80 Acres	

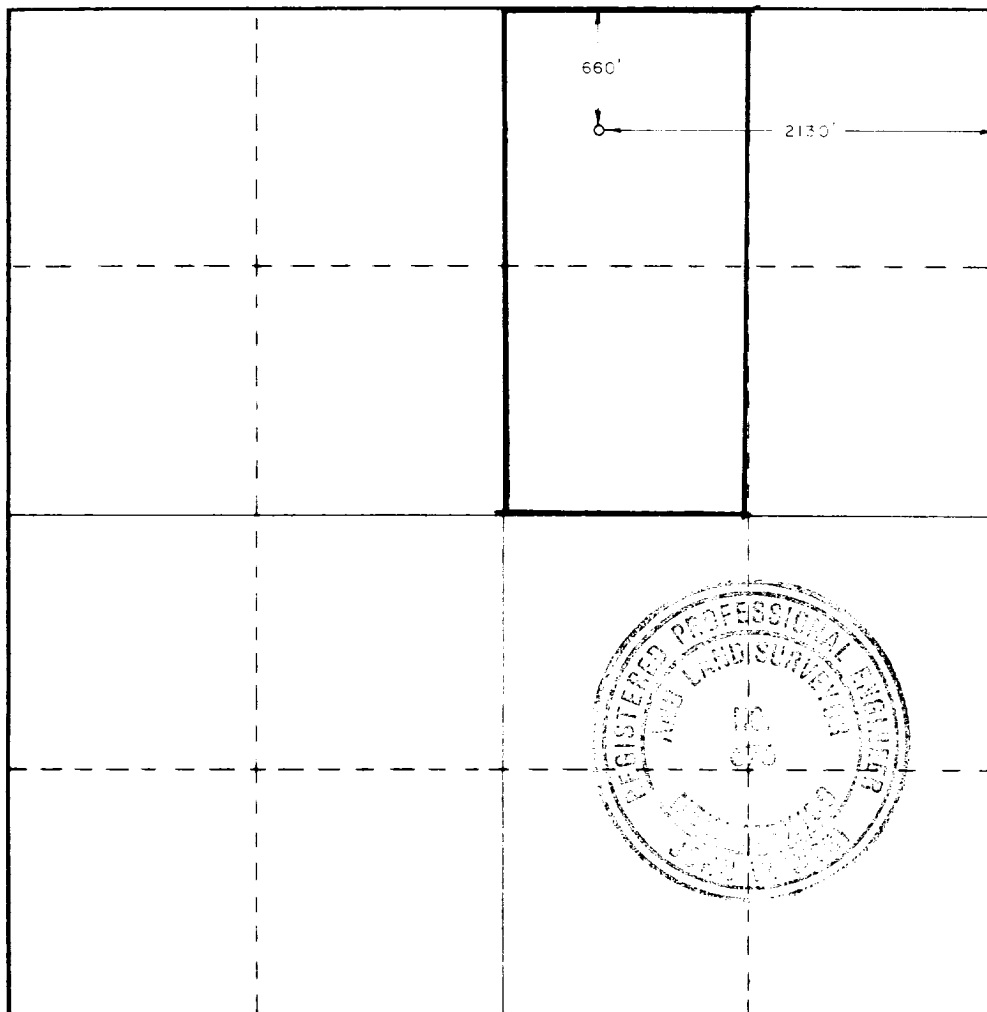
1. Outline the acreage dedicated to the subject well by colored pencil or hatchure marks on the plat below.
2. If more than one lease is dedicated to the well, outline each and identify the ownership thereof (both as to working interest and royalty).
3. If more than one lease of different ownership is dedicated to the well, have the interests of all owners been consolidated by communitization, unitization, force-pooling, etc?

☐ Yes ☐ No

If answer is "yes," type of consolidation Compulsory Pooling R8067

If answer is "no," list the owners and tract descriptions which have actually been consolidated. (Use reverse side of this form if necessary.)

No allowable will be assigned to the well until all interests have been consolidated (by communitization, unitization, forced-pooling, or otherwise) or until a non-standard unit, eliminating such interests, has been approved by the Commission.



CERTIFICATION

I hereby certify that the information contained herein is true and complete to the best of my knowledge and belief

Francisco P. Rodriguez
Name

Francisco P. Rodriguez

Adv. Engr. Tech.

Pennzoil Company

February 5, 1986

I hereby certify that the well location shown on this plat was plotted from field notes of actual surveys made by me or under my supervision, and that the same is true and correct to the best of my knowledge and belief

Date Surveyed:

February 3, 1986

Registered Professional Engineer and/or Land Surveyor

John W. West
Certificate No. JOHN W. WEST, 676

RONALD J. EIDSON, 3239