

**NEW MEXICO OIL CONSERVATION COMMISSION
WELL LOCATION AND ACREAGE DEDICATION PLAT**

Form C-102
Supersedes C-128
Effective 1-1-65

All distances must be from the outer boundaries of the Section

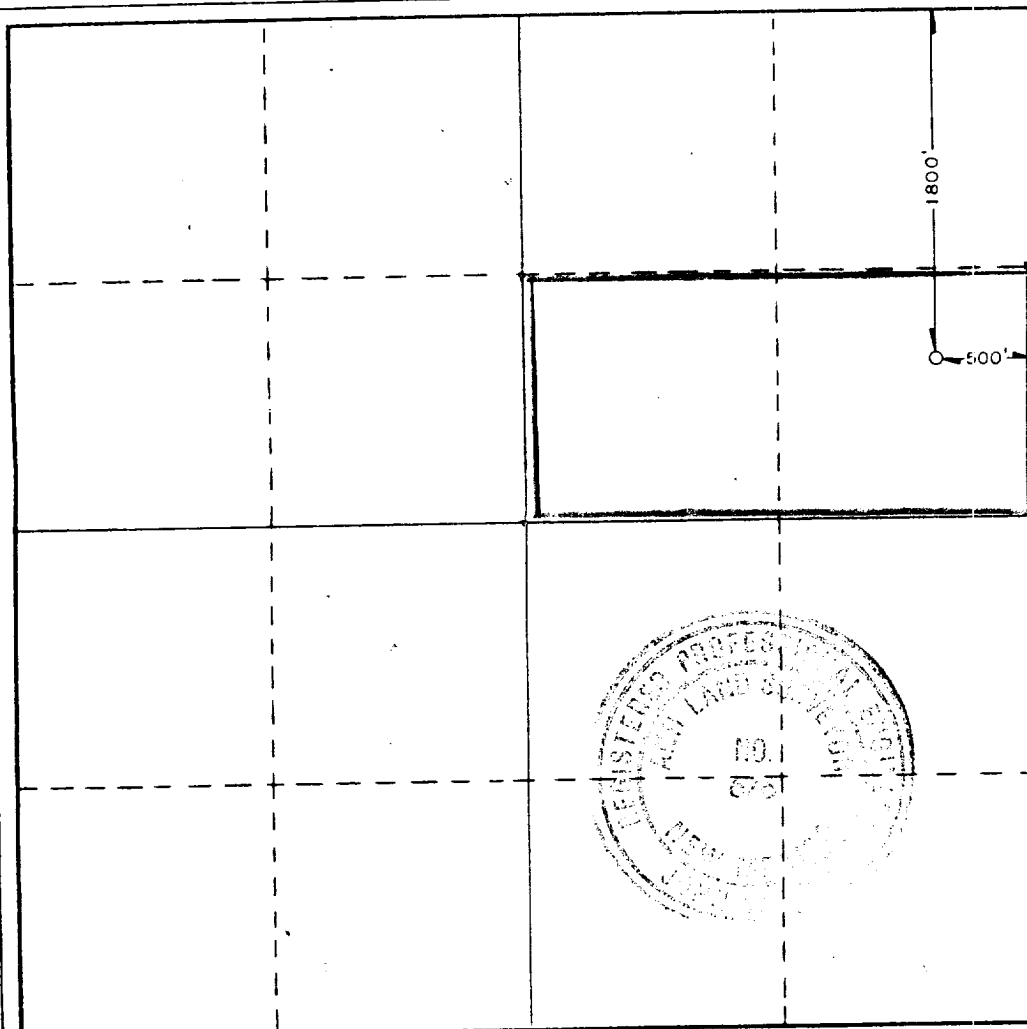
Operator INEXCO OIL COMPANY			Lessee LEA FARMS		Well No. 2
Unit Letter H	Section 14	Township 17 SOUTH	Range 37 EAST	County LEA	
Actual Footage Location of Well: <div style="display: flex; justify-content: space-between;"> 1800 feet from the NORTH line and 500 feet from the EAST line </div>					
Ground Level Elev. 3727.4'	Producing Formation Strawn	Pool South Humble City (Strawn) Pool		Dedicated Acreage: 80.00 Acres	

1. Outline the acreage dedicated to the subject well by colored pencil or hatchure marks on the plat below.
2. If more than one lease is dedicated to the well, outline each and identify the ownership thereof (both as to working interest and royalty).
3. If more than one lease of different ownership is dedicated to the well, have the interests of all owners been consolidated by communitization, unitization, force-pooling, etc?

☒ Yes ☐ No If answer is "yes," type of consolidation **Forced-Pooling** **R-8168**

If answer is "no," list the owners and tract descriptions which have actually been consolidated. (Use reverse side of this form if necessary.) _____

No allowable will be assigned to the well until all interests have been consolidated (by communitization, unitization, forced-pooling, or otherwise) or until a non-standard unit, eliminating such interests, has been approved by the Commission.



CERTIFICATION

I hereby certify that the information contained herein is true and complete to the best of my knowledge and belief.

Name **Mike Pawelka**
 Position **Prod. Eng.**
 Company **Inexco Oil Co.**
 Date **3-10-86**

I hereby certify that the well location shown on this plat was plotted from field notes of actual surveys made by me or under my supervision, and that the same is true and correct to the best of my knowledge and belief.

Date Surveyed
MARCH 7, 1986

Registered Professional Engineer and/or Land Surveyor

[Signature]

Certificate No. **JOHN W. WEST, 676**
RONALD J. EIDSON, 3239

RECEIVED
MAR 17 1986
C. C. HOBBS OFFICE

me & s/26/86
173