

STATE OF NEW MEXICO
ENERGY AND MINERALS DEPARTMENT

CONSERVATION DIVISIC
P. O. BOX 2088
SANTA FE, NEW MEXICO 87501

Form C-101
Revised 10-1-78

NO. OF COPIES RECEIVED	
DISTRIBUTION	
SANTA FE	
FILE	
U.S.G.S.	
LAND OFFICE	
OPERATOR	

5A. Indicate Type of Lease
STATE ☐ FEE ☒

5. State Oil & Gas Lease No.

APPLICATION FOR PERMIT TO DRILL, DEEPEN, OR PLUG BACK

1a. Type of Work

b. Type of Well DRILL ☒ DEEPEN ☐ PLUG BACK ☐
OIL WELL ☒ GAS WELL ☐ OTHER ☐ SINGLE ZONE ☒ MULTIPLE ZONE ☐

2. Name of Operator

HAMON OPERATING COMPANY

3. Address of Operator

325 N. St. Paul, Suite 3900, Dallas, Texas 75201-3902

4. Location of Well

UNIT LETTER G LOCATED 2310 FEET FROM THE North LINE
AND 2290 FEET FROM THE East LINE OF SEC. 24 TWP. 17S RGE. 38E NMPM

7. Unit Agreement Name

8. Farm or Lease Name

NORRIS

9. Well No.

1

10. Field and Pool, or Wildcat

KNOWLES, 90 (WOLFCAMP)

12. County

LEA

11. Elevations (Show whether DF, RT, etc.)

3665' GROUND

21A. Kind & Status Plug. Bond

BLANKET ON FILE

19. Proposed Depth

10200'

19A. Formation

WOLFCAMP

20. Rotary or C.T.

ROTARY

21B. Drilling Contractor

UNKNOWN

22. Approx. Date Work will start

11-15-86

PROPOSED CASING AND CEMENT PROGRAM

SIZE OF HOLE	SIZE OF CASING	WEIGHT PER FOOT	SETTING DEPTH	SACKS OF CEMENT	EST. TOP
17-1/2	13-3/8	48	300	300	SURFACE
12-1/4	8-5/8	24-32	5000	1600	SURFACE
7-7/8	5-1/2	15.5-17	10200'	900	4500'

- (1) Drill 17-1/2" hole to 300' and set 13-3/8" - Cement to Surface.
- (2) Drill 12-1/4" hole to 5000' and set 8-5/8" - Cement to Surface.
- (3) NU and test 10" 5000 psi BOP Stack.
- (4) Drill 7-7/8" hole to 10,200'.
- (5) Drill stem test shows as warranted.
- (6) Run resistivity and porosity logs.
- (7) If production indicated, run 5-1/2" casing to T.D.
- (8) Perforate & Test.

Permit Expires 6 Months From Approval
Unless Drilling Underway.

IN ABOVE SPACE DESCRIBE PROPOSED PROGRAM: IF PROPOSAL IS TO DEEPEN OR PLUG BACK, GIVE DATA ON PRESENT PRODUCTIVE ZONE AND PROPOSED NEW PRODUCTIVE ZONE. GIVE BLOWOUT PREVENTER PROGRAM, IF ANY.

hereby certify that the information above is true and complete to the best of my knowledge and belief.

Signed Larry D. Swin Title Manager of Operations

Date 10-14-86

(This space for State Use)

ORIGINAL SIGNED BY KERRY SEXTON

APPROVED BY DISTRICT 1 SUPERVISOR

TITLE

DATE OCT 17 1986

CONDITIONS OF APPROVAL, IF ANY:

XICO OIL CONSERVATION COMMISSION
WELL LOCATION AND ACREAGE DEDICATION PLAT

Form C-102
Supersedes C-128
Effective 1-1-65

All distances must be from the outer boundaries of the Section

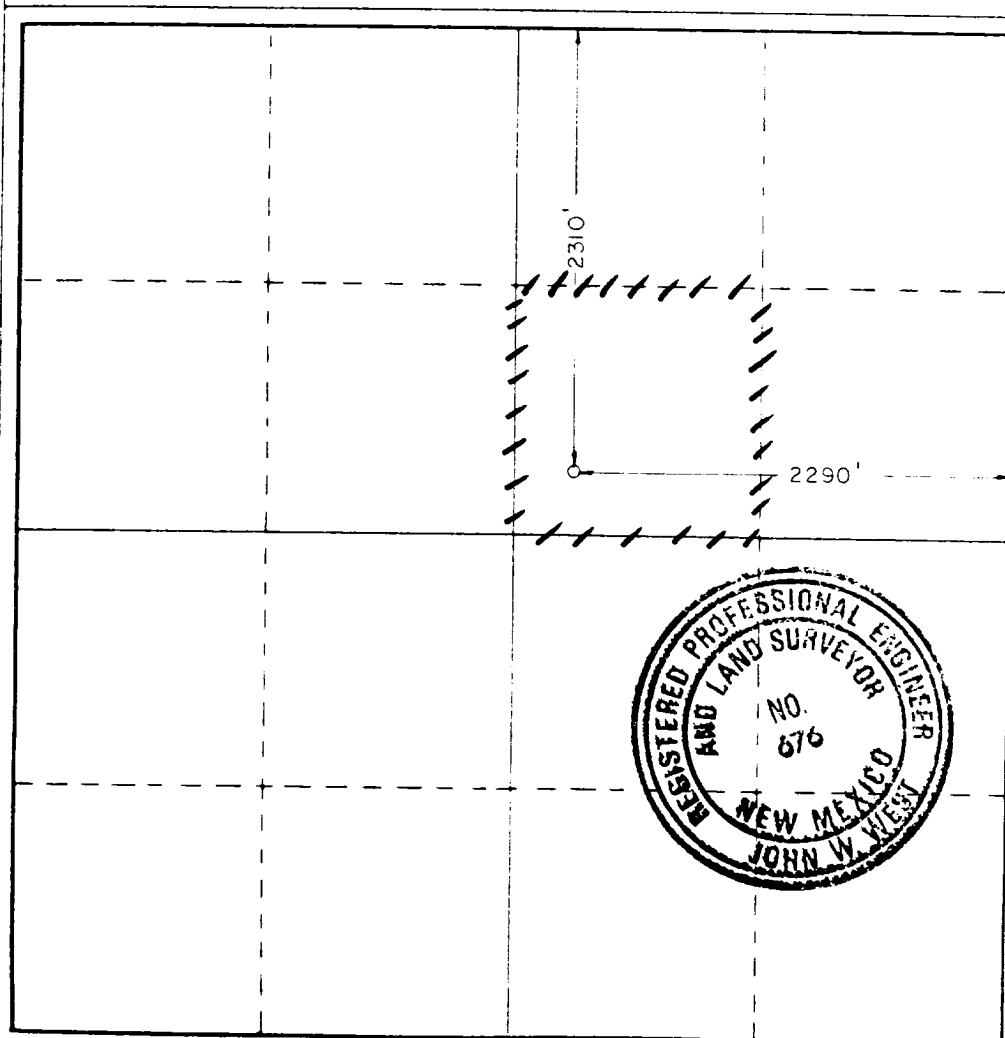
Operator HAMON OPERATING COMPANY		Lease NORRIS		Well No. 1
Plot Letter G	Section 24	Township 17S	Range 3SE	County LEA
Actual Portage Location of Well: 2310 feet from the NORTH line and 2290 feet from the EAST line				
Ground Level Elev. 3665.7	Producing Formation WOLFCAMP	Pool WOLFCAMP SE Knowles	Dedicated Acreage 40 Acres	

1. Outline the acreage dedicated to the subject well by colored pencil or hachure marks on the plat below.
2. If more than one lease is dedicated to the well, outline each and identify the ownership thereof (both as to working interest and royalty).
3. If more than one lease of different ownership is dedicated to the well, have the interests of all owners been consolidated by communitization, unitization, force-pooling, etc?

☐ Yes ☐ No If answer is "yes," type of consolidation _____

If answer is "no," list the owners and tract descriptions which have actually been consolidated (Use reverse side of this form if necessary.) _____

No allowable will be assigned to the well until all interests have been consolidated (by communitization, unitization, forced-pooling, or otherwise) or until a non-standard unit, eliminating such interests, has been approved by the Commission.



CERTIFICATION

I hereby certify that the information contained herein is true and complete to the best of my knowledge and belief.

Larry D. Smith

Name **LARRY D. SMITH**
 Position **MANAGER OF OPERATIONS**
 Company **HAMON OPERATING COMPANY**
 Date **10-14-86**

I hereby certify that the well location shown on this plat was plotted from field notes of actual surveys made by me or under my supervision, and that the same is true and correct to the best of my knowledge and belief.

Date Surveyed
MAY 10, 1986

Registered Professional Engineer
and/or Land Surveyor

Certificate No. **JOHN W. WEST 676**
RONALD J. EIDSON, 3239