

WRS COMPLETION REPORT

REISSUES SEC 3 TWP 17S RGE 37E
 P# 30-T-0004 05/18/87 30-025-29841-0000 PAGE 1

NMEX LEA * 679FNL 2130FEL SEC NW NE
 STATE COUNTY FOOTAGE SPOT
 AMERIND OIL D DO
 OPERATOR WELL CLASS INIT FIN
 1 STATE "3"
 WELL NO. LEASE NAME
 3785KB 3771GR SHIPP
 OPER ELEV FIELD POOL AREA
 API 30-025-29841-0000

LEASE TYPE NO PERM T OR WELL D. NO.
 01/27/1987 03/17/1987 ROTARY OIL
 SPUD DATE COMP. DATE TYPE TOOL STATUS
 11500 STRAWN HONDO DRLG 3 RIG SUB 13
 PROJ. DEPTH PROJ. FORM CONTRACTOR
 DTD 11373 PB 11348 FM/TD STRAWN
 DRILLERS T.D. LOG T.D. PLUG BACK T.D. O.D. T.D. FORM T.D.

LOCATION DESCRIPTION

8 MI SE LOVINGTON, NM

CASING/LINER DATA

CSG 13 3/8 @ 425 W/ 350 SACKS
 CSG 8 5/8 @ 4200 W/ 211 SACKS
 CSG 5 1/2 @11373 W/ 1020 SACKS

TUBING DATA

TBG 2 3/8 AT 11177

INITIAL POTENTIAL

IPF 523BOPD 597 MCFD 20/64CK 24HRS
 STRAWN PERF 11241-11335
 PERF 11241-11335
 ACID 11241-11335 400GALS
 TP 580
 GTY 43.0 GOR 1141
 FCP PKR

FORMATION TEST DATA

DST 1 8335- 8445 DRINKARD S
 REC 900.0 FT GAS 105.0 FT MUD
 REC 5.0 FT OIL 1800.0 CC OCM
 INIT OP 5M IFP 62 FFP 21
 FINAL OP 1H IFP 41 FFP 41 BHT 132F

CONTINUED IC# 300257002087

Copyrighted 1987
 Reproduction
 Prohibited

Petroleum Information

P - WRS - GET
 Form No 1B7

DB a company of
 The Dun & Bradstreet Corporation

AMERIND OIL D DO
1 STATE "3"

FORMATION TEST DATA

ISIP 1196 1H FSIP 1133 4H IHP 3662 FHP 3662
WS 12000 PPM CL

DRILLING MEDIA /TYPE,DEPTH/

3425 10.3 6550 8.4 PPG

DRILLING PROGRESS DETAILS

AMERIND OIL
500 WILCO BLDG
MIDLAND, TX 79701
915-682-8717
01/27 LOC/1987/
01/30 DRLG 3425, VIS 32
02/06 DRLG 6550, VIS 28
02/13 DRLG 9033
02/20 9550 TD, TIH
03/11 11373 TD, PB 11348, TSTG
05/11 DRLD FROM 9437 TO 11373 W/TOTAL LOSS OF RETURNS
TD REACHED 02/24/87 RIG REL 02/26/87
03/26 11373 TD, PB 11348
COMP 3/17/87, IPF 523 BO, 597 MCFG, 20/64
CK, GOR 1141, GTY 43, FTP
580, FCP PKR
PROD ZONE - STRAWN 11241-11335
NO CORES, ONE DST RPTD
05/11 REISSUED TO CORRECT FM ON DST #1, ADD GTY
TO IP, DRLG COMMENT & TRIMNTS
REPLACEMENT FOR CT ISSUED 3/30/87

MEXICO OIL CONSERVATION COMMISSION
WELL LOCATION AND ACREAGE DEDICATION PLAT

Form C-102
Supersedes 128
Effective 1-1-65

All distances must be from the outer boundaries of the Section.

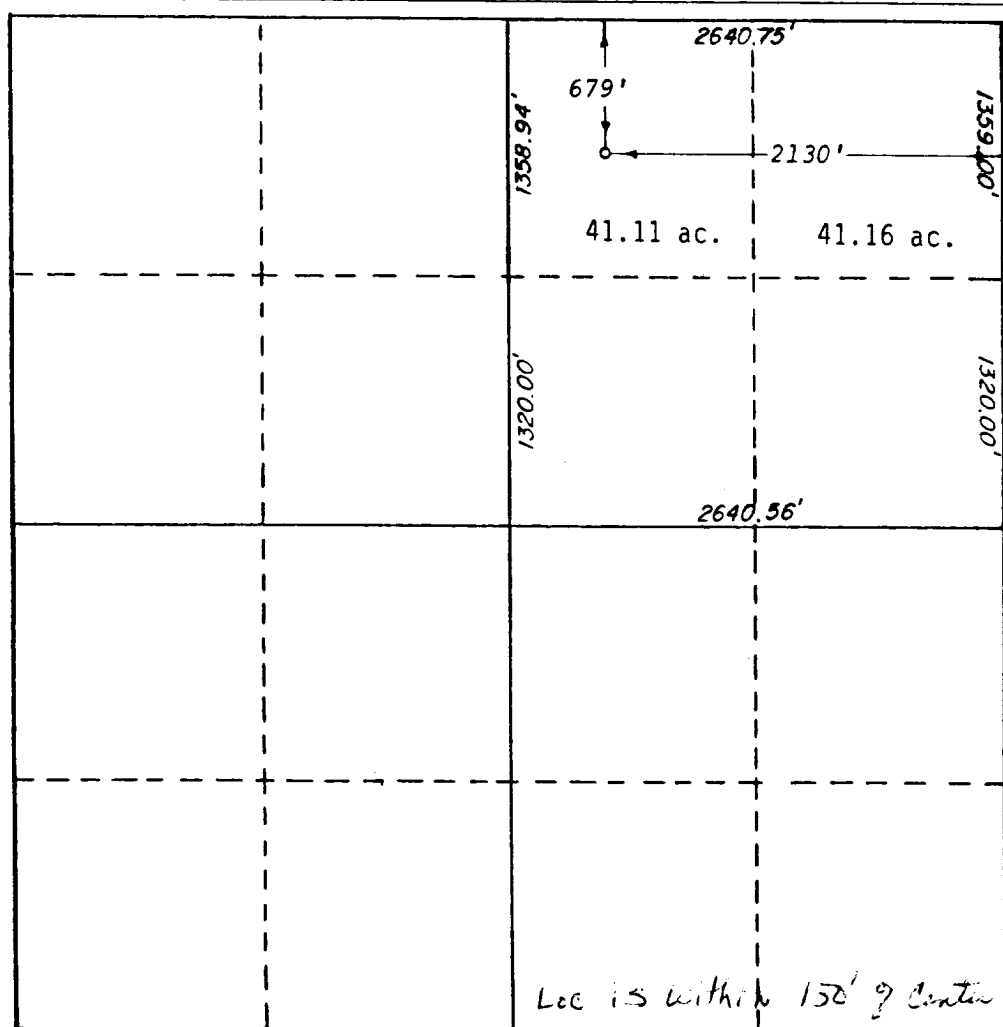
Operator AMERIND OIL CO.		Lease		State "3"		Well No. 1
Init Letter B	Section 3	Township 17-S	Range 37-E	County LEA		
Actual Footage Location of Well:						
679 feet from the North line and		2130'		feet from the East line		
Ground Level Elev. 3771'	Producing Formation Strawn	Pool Shipp Strawn		Dedicated Acreage: 82.27 Acres		

1. Outline the acreage dedicated to the subject well by colored pencil or hachure marks on the plat below.
2. If more than one lease is dedicated to the well, outline each and identify the ownership thereof (both as to working interest and royalty).
3. If more than one lease of different ownership is dedicated to the well, have the interests of all owners been consolidated by communitization, unitization, force-pooling, etc?

Yes No If answer is "yes," type of consolidation _____

If answer is "no," list the owners and tract descriptions which have actually been consolidated. (Use reverse side of this form if necessary.) _____

No allowable will be assigned to the well until all interests have been consolidated (by communitization, unitization, forced-pooling, or otherwise) or until a non-standard unit, eliminating such interests, has been approved by the Commission.



CERTIFICATION

I hereby certify that the information contained herein is true and complete to the best of my knowledge and belief.

Robert C. Leibrock

Name
Robert C. Leibrock
Position
Vice President
Company
Amerind Oil Co.

Date
January 19, 1987

I hereby certify that the well location shown on this plat was plotted from field notes of actual surveys made by me or under my supervision, and that the same is true and correct to the best of my knowledge and belief.

Date Surveyed
Jan. 16, 1987

Registered Professional Engineer and/or Land Surveyor

Gary D. Baswell

Certificate No.
6689



RECEIVED
MAR 20 1987
CCD
HOBBS OFFICE