

**NEW MEXICO OIL CONSERVATION COMMISSION
WELL LOCATION AND ACREAGE DEDICATION PLAT**

Form C-102
Supersedes C-128
Effective 1-1-65

All distances must be from the outer boundaries of the Section

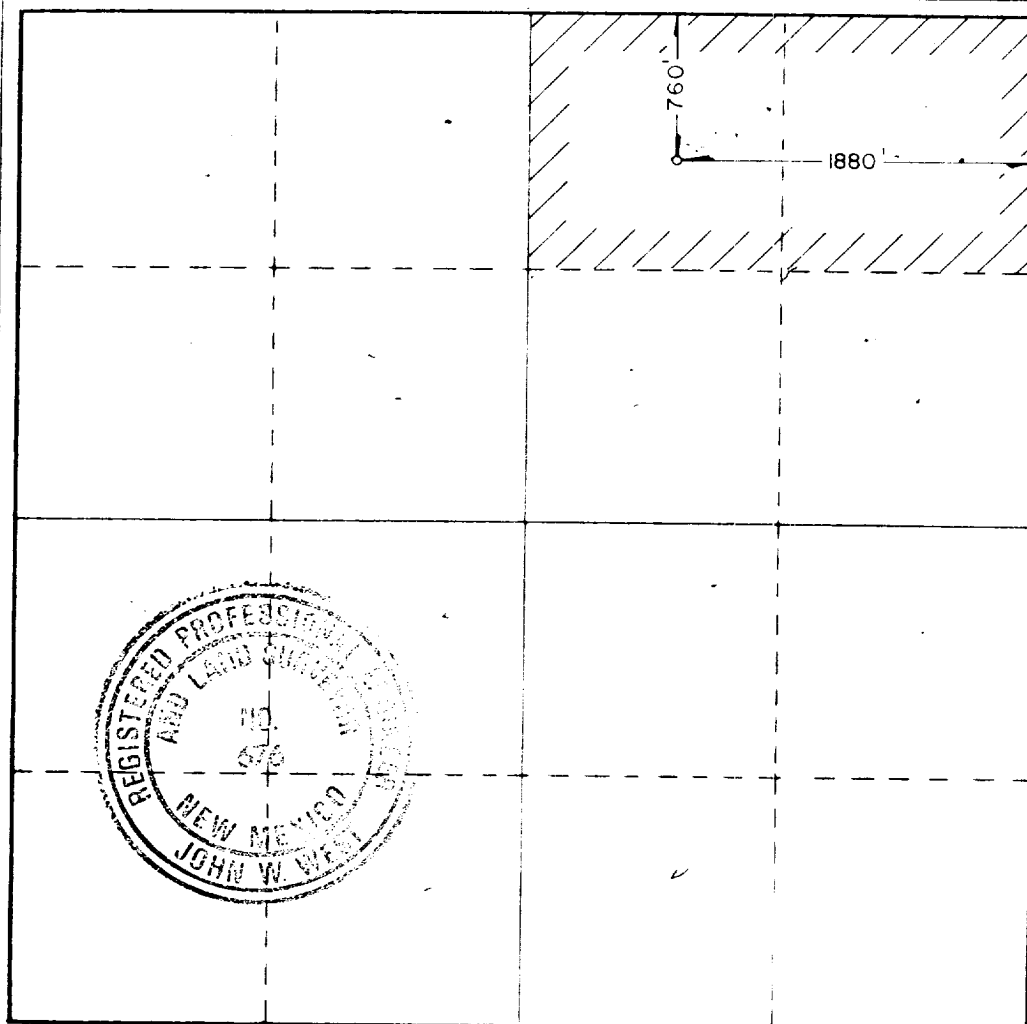
| | | | | |
|---|---|---|---------------------------------------|-----------------------------|
| Operator Inexco Oil Co. | | Lease Lea Farms | | Well No. 3 |
| Unit Letter B | Section 14 | Township 17 South | Range 37 East | County Lea County |
| Actual Footage Location of Well: 760 feet from the North line and 1880 feet from the East line | | | | |
| Ground Level Elev. 3734.1 | Producing Formation Atoka Strawn | Pool Humble City South (Starwn) | Dedicated Acreage: 80 Acres | |

1. Outline the acreage dedicated to the subject well by colored pencil or hatchure marks on the plat below.
2. If more than one lease is dedicated to the well, outline each and identify the ownership thereof (both as to working interest and royalty).
3. If more than one lease of different ownership is dedicated to the well, have the interests of all owners been consolidated by communitization, unitization, force-pooling, etc?

☐ Yes ☐ No If answer is "yes," type of consolidation _____

If answer is "no," list the owners and tract descriptions which have actually been consolidated. (Use reverse side of this form if necessary.) _____

No allowable will be assigned to the well until all interests have been consolidated (by communitization, unitization, forced-pooling, or otherwise) or until a non-standard unit, eliminating such interests, has been approved by the Commission.



CERTIFICATION

I hereby certify that the information contained herein is true and complete to the best of my knowledge and belief.

Name **G. A. Craighead**
 Position **Sr. Petroleum Engineer**
 Company **Inexco Oil Co.**
 Date **March 17, 1987**

I hereby certify that the well location shown on this plat was plotted from field notes of actual surveys made by me or under my supervision, and that the same is true and correct to the best of my knowledge and belief.

Date Surveyed
March 17, 1987

Registered Professional Engineer
and/or Land Surveyor

John W. West

Certificate No **JOHN W. WEST, 676**
RONALD J. EIDSON, 3239

RECEIVED
MAR 17 1987
OCD
HOBBS OFFICE