

OIL CONSERVATION DIVISION

STATE OF NEW MEXICO
ENERGY AND MINERALS DEPARTMENT

P. O. BOX 2088

SANTA FE, NEW MEXICO 87501

Form C-102
Revised 10-1-78

All distances must be from the outer boundaries of the Section.

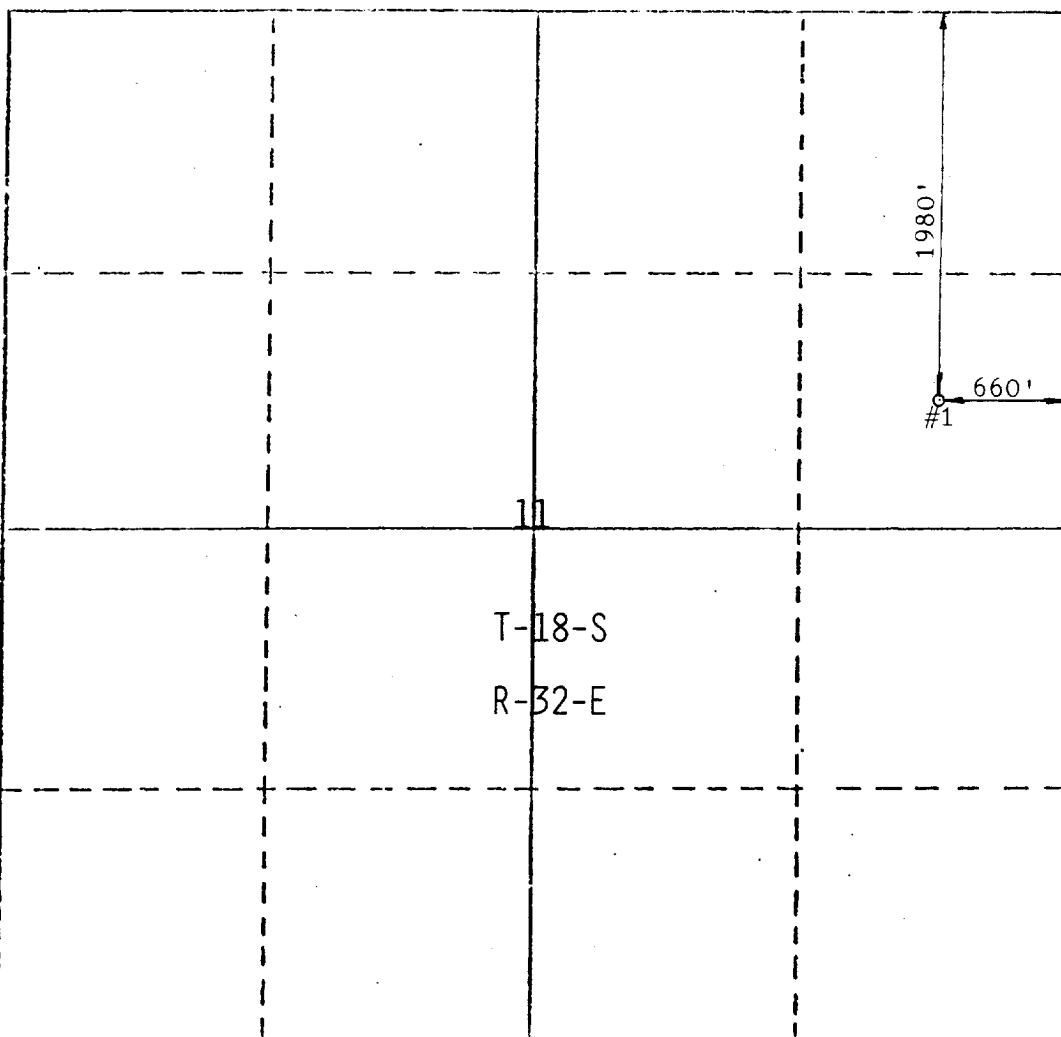
| | | | | | |
|---|---------------------------------|---------------------------------|-----------------------------|--------------------------------|---------------|
| Operator Union Texas Petroleum Corporation | | | Lease Short Fuse Federal | | Well No. 1 |
| Unit Letter H | Section 11 | Township T-18-S | Range R-32-E | County Lea | |
| Actual Footage Location of Well: | | | | | |
| 1980 feet from the North | | line and 660 feet from the East | | line | |
| Ground Level Elev. 3862' | Producing Formation Wolfcamp | Pool Wildcat | | Dedicated Acreage: 40 Acres | |

1. Outline the acreage dedicated to the subject well by colored pencil or hachure marks on the plat below.
2. If more than one lease is dedicated to the well, outline each and identify the ownership thereof (both as to working interest and royalty).
3. If more than one lease of different ownership is dedicated to the well, have the interests of all owners been consolidated by communitization, unitization, force-pooling, etc?

☐ Yes ☒ No If answer is "yes," type of consolidation _____

If answer is "no," list the owners and tract descriptions which have actually been consolidated. (Use reverse side of this form if necessary.) _____

No allowable will be assigned to the well until all interests have been consolidated (by communitization, unitization, forced-pooling, or otherwise) or until a non-standard unit, eliminating such interests, has been approved by the Division.



CERTIFICATION:

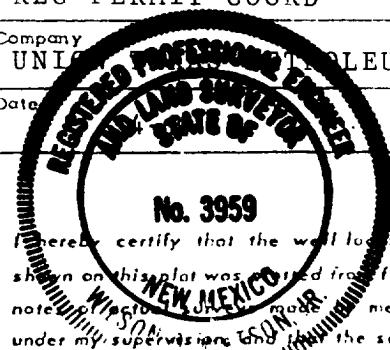
I hereby certify that the information contained herein is true and complete to the best of my knowledge and belief.

Name
KEN WHITE

Position
REG PERMIT COORD

Company
UNION TEXAS PETROLEUM CO

Date



I hereby certify that the well location shown on this plat was located from field notes made by me or under my supervision and that the same is true and correct to the best of my knowledge and belief.

April 2, 1987

Date Surveyed

Registered Professional Engineer
and/or Land Surveyor

3959

Certificate No.

