

NO. OF COPIES RECEIVED	
DISTRIBUTION	
SANTA FE	
FILE	
U.S.G.S.	
LAND OFFICE	
OPERATOR	

3A. Indicate Type of Lease
STATE <input checked="" type="checkbox"/> REC <input type="checkbox"/>

3. State Oil & Gas Lease No.
B-155

APPLICATION FOR PERMIT TO DRILL, DEEPEN, OR PLUG BACK

Type of Work

Type of Well	DRILL <input checked="" type="checkbox"/>	DEEPEN <input type="checkbox"/>	PLUG BACK <input type="checkbox"/>
Oil Well <input checked="" type="checkbox"/>	Gas Well <input type="checkbox"/>	OTHER	SINGLE ZONE <input checked="" type="checkbox"/> MULTIPLE ZONE <input type="checkbox"/>

Name of Operator	Texaco Producing Inc.
------------------	-----------------------

Address of Operator	P. O. Box 728, Hobbs, New Mexico 88240
---------------------	--

Location of Well	UNIT LETTER M LOCATED 990 FEET FROM THE South LINE
------------------	--

990 FEET FROM THE West LINE OF SEC. 36 TWP. 17-S REC. 34-E BLM
--

12. County	Lea
------------	-----

19. Proposed Depth	6160'
19A. Formation	Glorieta
20. Rotary or C.T.	Rotary

Elevations (show whether DF, KT, etc.)	3998 GR
21A. Kind & Status Plug. Bond	Blanket
21B. Drilling Contractor	
22. Approx. Date Work will start	May 15, 1987

PROPOSED CASING AND CEMENT PROGRAM

SIZE OF HOLE	SIZE OF CASING	WEIGHT PER FOOT	SETTING DEPTH	SACKS OF CEMENT	EST. TOP
28"	24"	133#	40'	Redimix	Surface
20"	16"	65#	400'	550	Circulate
15"	11-3/4"	47#	1550'	1200	Circulate
10-5/8"	8-5/8"	32#	4850'	1300	Circulate
7-7/8"	5-1/2"	15.5#	6160'	800	Circulate

CEMENTING PROGRAM

Surface Casing: 550 sacks Class "H", 2% CaCl, 1/4# Flocele (15.6 PPG, 1.18 cu. ft./sx.)

1st Intermediate Casing: 1200 sacks Class "H", 2% CaCl, 1/4# Flocele (15.6 PPG, 1.18 cu. ft./sx.)

2nd Intermediate Casing: 1ST STAGE: 700 sacks Class "H" Light Weight, 15# Salt, 1/4# Flocele (12.7 ppg, 2.1 cu. ft./sx.) followed with 250 sacks Class "H", 1/4# Flocele (15.6 ppg, 1.18 cu. ft./sx).

2ND STAGE: 350 sacks Class "H" Neat (15.6 ppg, 1.18 cu. ft./sx.)

Continued on Page 2

All other wells in this 1/4, 1/4 Section are operated by Texaco.

BOVE SPACE DESCRIBE PROPOSED PROGRAM: IF PROPOSAL IS TO DEEPEN OR PLUG BACK, GIVE DATA ON PRESENT PRODUCTIVE ZONE AND PROPOSED NEW PRODUCTIVE ZONE. GIVE BLOWOUT PREVENTER PROGRAM, IF ANY.

I hereby certify that the information above is true and complete to the best of my knowledge and belief.

Signed L. J. Seeman Title Dist. Petr. Engr. Date 5/05/87

(This space for State Use)

Orig. Signed by
Paul Kautz
Geologist

APPROVED BY _____ TITLE _____ DATE MAY 8 1987

CONDITIONS OF APPROVAL, IF ANY:

Permit Expires 6 Months From Approval
Date Unless Drilling Underway.

RECEIVED
MAY 7 1987
OCD
HOBBS OFFICE

NEW MEXICO "O" STATE NCT-1 WELL NO. 26
VACUUM GLORIETA FIELD
LEA COUNTY, NEW MEXICO

Continuation to Form C-101

CEMENTING PROGRAM

Production Casing: 500 sacks Class "H" Light Weight, 1/4# Flocele (12.7 ppg, 1.84 cu. ft./sx.) followed with 300 sacks Class "H", 1/4# Flocele (15.6 ppg, 1.18 cu. ft./sx.)

RECEIVED
MAY 7 1987
OCD
HOBBS OFFICE

NEW MEXICO OIL CONSERVATION COMMISSION
WELL LOCATION AND ACREAGE DEDICATION PLAT

Form C-102
Supersedes C-128
Effective 1-1-65

All distances must be from the outer boundaries of the Section.

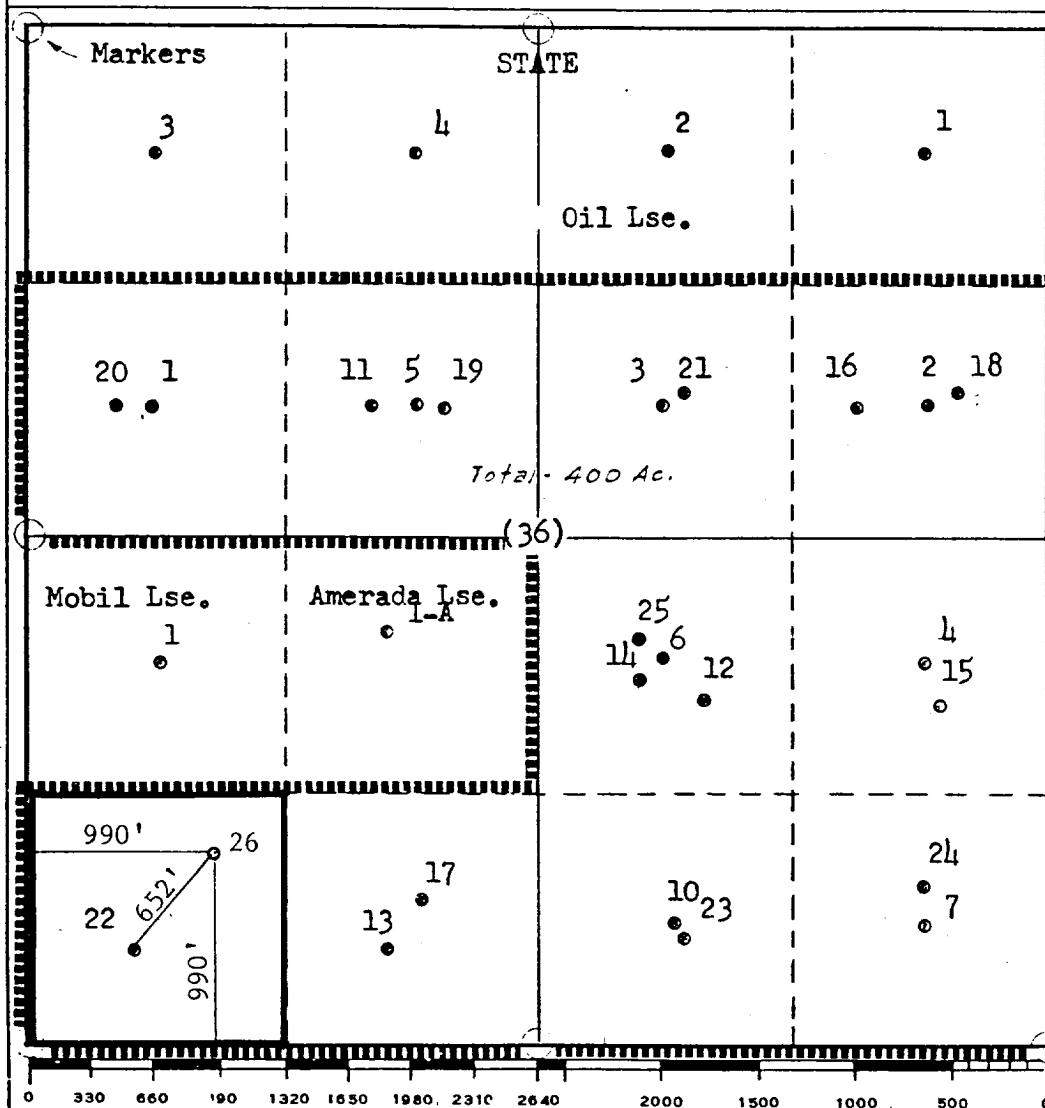
Operator TEXACO PRODUCING INC.			Lease New Mexico "O" State NCT-1		Well No. 26
Unit Letter M	Section 36	Township 17 South	Range 34 East	County Lea	
Actual Footage Location of Well: 990 feet from the South line and 990 feet from the West line Sec. 36					
Ground Level Elev. 3998'	Producing Formation Glorieta (Paddock)	Pool Vacuum Glorieta		Dedicated Acreage: 40 Acres	

- Outline the acreage dedicated to the subject well by colored pencil or hachure marks on the plat below.
- If more than one lease is dedicated to the well, outline each and identify the ownership thereof (both as to working interest and royalty).
- If more than one lease of different ownership is dedicated to the well, have the interests of all owners been consolidated by communitization, unitization, force-pooling, etc?

☐ Yes ☐ No If answer is "yes," type of consolidation _____

If answer is "no," list the owners and tract descriptions which have actually been consolidated. (Use reverse side of this form if necessary.) _____

No allowable will be assigned to the well until all interests have been consolidated (by communitization, unitization, forced-pooling, or otherwise) or until a non-standard unit, eliminating such interests, has been approved by the Commission.



CERTIFICATION

I hereby certify that the information contained herein is true and complete to the best of my knowledge and belief.

B. L. Eiland

Name
B. L. Eiland

Position
Division Surveyor

Company
Texaco Producing Inc.

Date
April 24, 1987

I hereby certify that the well location shown on this plat was plotted from field notes of actual surveys made by me or under my supervision, and that the same is true and correct to the best of my knowledge and belief.

Date Surveyed
April 23, 1987

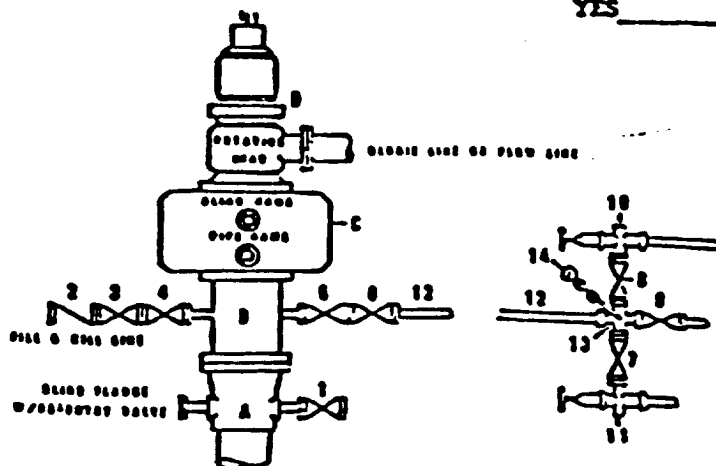
Registered Professional Engineer and/or Land Surveyor

B. L. Eiland

Certificate No.
4386

CONDITION II-B 3000 WP
FOR AIR DRILLING OR
WHERE YATES AIR BLOWS ARE EXPECTED

H₂S TRIM REQUIRED
YES _____ NO _____



INSTALLATION CONTROL

MATERIAL LIST - CONDITION II - B
YES AIR DRILLING

- A Texaco Wellhead
- B 3000# W.P. drilling spool with a 2" minimum flanged outlet for kill-line and 3" minimum flanged outlet for choke line
- C 3000# W.P. dual ram type preventer, hydraulic operated with 1" steel, 3000# W.P. control lines (where sub-structure height is adequate, 2-3000# W.P. single ram type preventers may be utilized.)
- D Rotating Head and extended Electric Line.
- 1,3,4, 2" minimum 3000# W.P. flanged full opening steel gate valve, or Halliburton Lo Torr Plug valve.
- 2 2" minimum 3000# W.P. back pressure valve
- 3,6,9 3" minimum 3000# W.P. flanged full opening steel gate valve, or Halliburton Lo Torr Plug valve.
- 12 3" minimum schedule 80, Grade "B", seamless line pipe
- 13 2" minimum x 3" minimum 3000# W.P. flanged cross
- 10, 11 2" minimum 3000# W.P. adjustable choke bodies
- 14 Cameron Mud Gauge or equivalent (location optional in choke line.)

<div style="display: flex; justify-content: space-between; align-items: center;"> <div> </div> <div> TEXACO, INC. <small>PRODUCING DEPARTMENT (S) (S) (S)</small> <small>HOUSTON, TEXAS</small> </div> <div> </div> </div>			
DATE	DATE	REV. NO.	REV. NO.
EXHIBIT C			

RECEIVED
MAY 7 1987
OCD
HOBBS OFFICE

REC'D 8/4/87
ELF