

UNITED STATES  
DEPARTMENT OF THE INTERIOR  
BUREAU OF LAND MANAGEMENT

APPLICATION FOR PERMIT TO DRILL, DEEPEN, OR PLUG BACK

1a. TYPE OF WORK

DRILL ☒

DEEPEN ☐

PLUG BACK ☐

b. TYPE OF WELL

OIL  
WELL ☒

GAS  
WELL ☐

OTHER

SINGLE  
ZONE ☒

MULTIPLE  
ZONE ☐

2. NAME OF OPERATOR

Siete Oil & Gas Corporation

3. ADDRESS OF OPERATOR

P. O. Box 2523, Roswell, New Mexico 88201

4. LOCATION OF WELL (Report location clearly and in accordance with any State requirements.)\*

At surface 1650' FNL & 1650' FWL, SE/4 NW/4, Unit Letter F

At proposed prod. zone Same

14. DISTANCE IN MILES AND DIRECTION FROM NEAREST TOWN OR POST OFFICE\*

15 miles Southeast of Loco Hills, New Mexico

10. DISTANCE FROM PROPOSED\*

LOCATION TO NEAREST  
PROPERTY OR LEASE LINE, FT.  
(Also to nearest drig. unit line, if any) 330'

16. NO. OF ACRES IN LEASE

40

17. NO. OF ACRES ASSIGNED  
TO THIS WELL

40

18. DISTANCE FROM PROPOSED LOCATION\*  
TO NEAREST WELL, DRILLING, COMPLETED,  
OR APPLIED FOR, ON THIS LEASE, FT.

N/A

19. PROPOSED DEPTH

5000'

20. ROTARY OR CABLE TOOLS

Rotary

21. ELEVATIONS (Show whether DF, RT, GR, etc.)

3712' GR

22. APPROX. DATE WORK WILL START\*

May 30, 1987

23. PROPOSED CASING AND CEMENTING PROGRAM

SIZE OF HOLE	SIZE OF CASING	WEIGHT PER FOOT	SETTING DEPTH	QUANTITY OF CEMENT
12 1/4"	8 5/8"	24# J-55	350'	200 sks. - circulate
7 7/8"	5 1/2"	15.5# J-55	5000'	1300 sks. - circulate

Selectively Perforate & Treat Pay Zone.

Attachments:

Survey Plat (C-102)  
Supplemental Drilling Data  
Surface Use Plan

IN ABOVE SPACE DESCRIBE PROPOSED PROGRAM: If proposal is to deepen or plug back, give data on present productive zone and proposed new productive zone. If proposal is to drill or deepen directionally, give pertinent data on subsurface locations and measured and true vertical depths. Give blowout preventer program, if any.

24.

SIGNED

TITLE Vice President Drlg. & Prod. DATE 5/15/87

(This space for Federal or State office use)

PERMIT NO.

Orig. Sgd. Linda S. C. Rensch

APPROVAL DATE

Acting Area Manager

APPROVED BY

TITLE

DATE 5/29/87

CONDITIONS OF APPROVAL, IF ANY:

\*See Instructions On Reverse Side

**NE EXICO OIL CONSERVATION COMMISSION  
WELL LOCATION AND ACREAGE DEDICATION PLAT**

Form C-102  
Supersedes C-128  
Effective 1-1-65

All distances must be from the outer boundaries of the Section

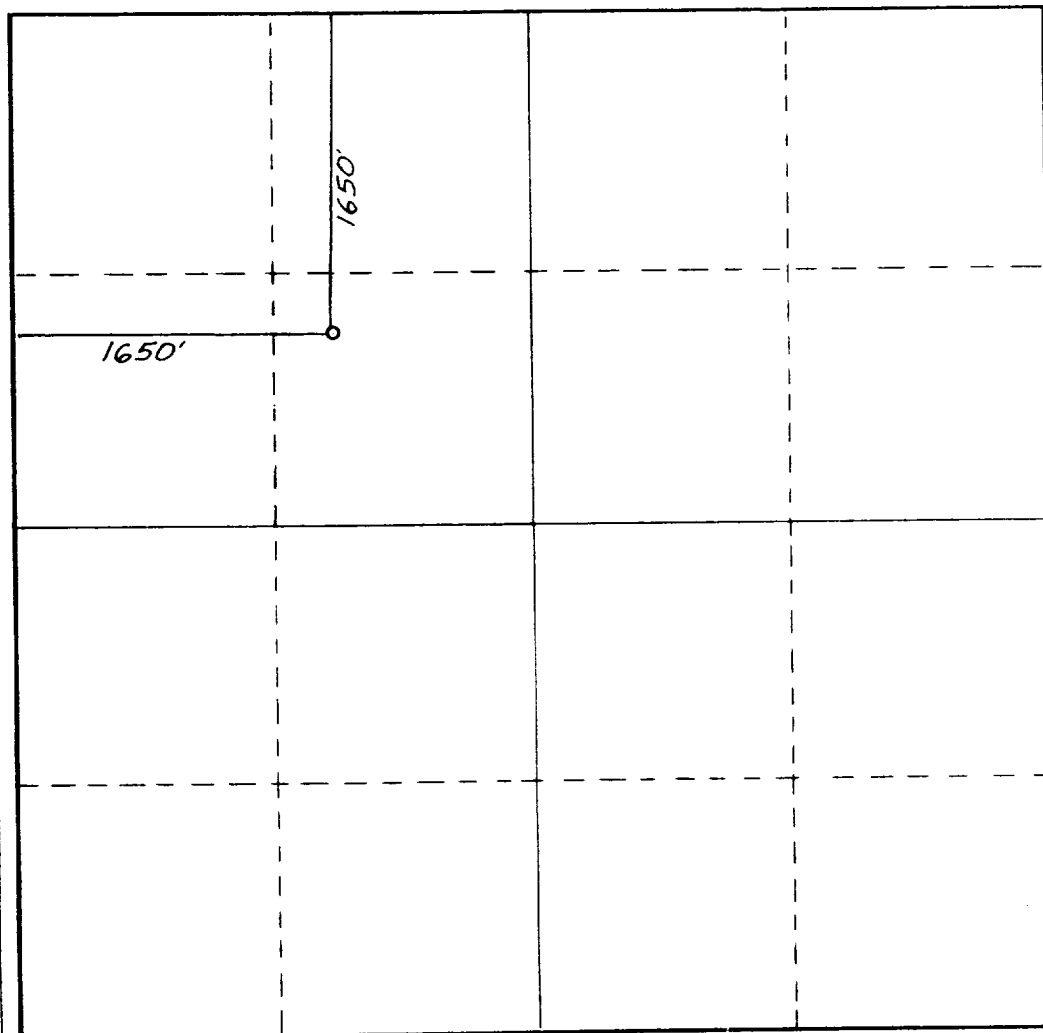
Operator <b>SIETE OIL &amp; GAS CORPORATION</b>			Lease <b>Jade Federal</b>		Well No. <b>1</b>
Unit Letter <b>F</b>	Section <b>19</b>	Township <b>18 South</b>	Range <b>32 East</b>	County <b>Lea</b>	
Actual Footage Location of Well: <div style="display: flex; justify-content: space-between;"> <span><b>16 50</b> feet from the <b>North</b> line and <b>16 50</b> feet from the <b>West</b> line</span> </div>					
Ground Level Elev. <b>3712.</b>	Producing Formation <b>Delaware</b>	Pool <b>East Shugart Delaware</b>		Dedicated Acreage: <b>40</b> Acres	

1. Outline the acreage dedicated to the subject well by colored pencil or hachure marks on the plat below.
2. If more than one lease is dedicated to the well, outline each and identify the ownership thereof (both as to working interest and royalty).
3. If more than one lease of different ownership is dedicated to the well, have the interests of all owners been consolidated by communitization, unitization, force-pooling, etc?

☐ Yes    ☐ No    If answer is "yes," type of consolidation \_\_\_\_\_

If answer is "no," list the owners and tract descriptions which have actually been consolidated. (Use reverse side of this form if necessary.) \_\_\_\_\_

No allowable will be assigned to the well until all interests have been consolidated (by communitization, unitization, forced-pooling, or otherwise) or until a non-standard unit, eliminating such interests, has been approved by the Commission.



**CERTIFICATION**

*I hereby certify that the information contained herein is true and complete to the best of my knowledge and belief.*

*H. D. Justice*

Name

**Harold D. Justice**

Position

**Vice President Drlg. & Prod.**

Company

**Siete Oil & Gas Corporation**

Date

**5/15/87**

*I hereby certify that the well location shown on this plat was plotted from field notes of actual surveys made by me or under my supervision and that the same is true and correct to the best of my knowledge and belief.*

**DAN R. REEDY**  
**REGISTERED PROFESSIONAL ENGINEER AND SURVEYOR**  
**5412**

Date Surveyed

**May 6, 1987**

Registered Professional Engineer and/or Land Surveyor

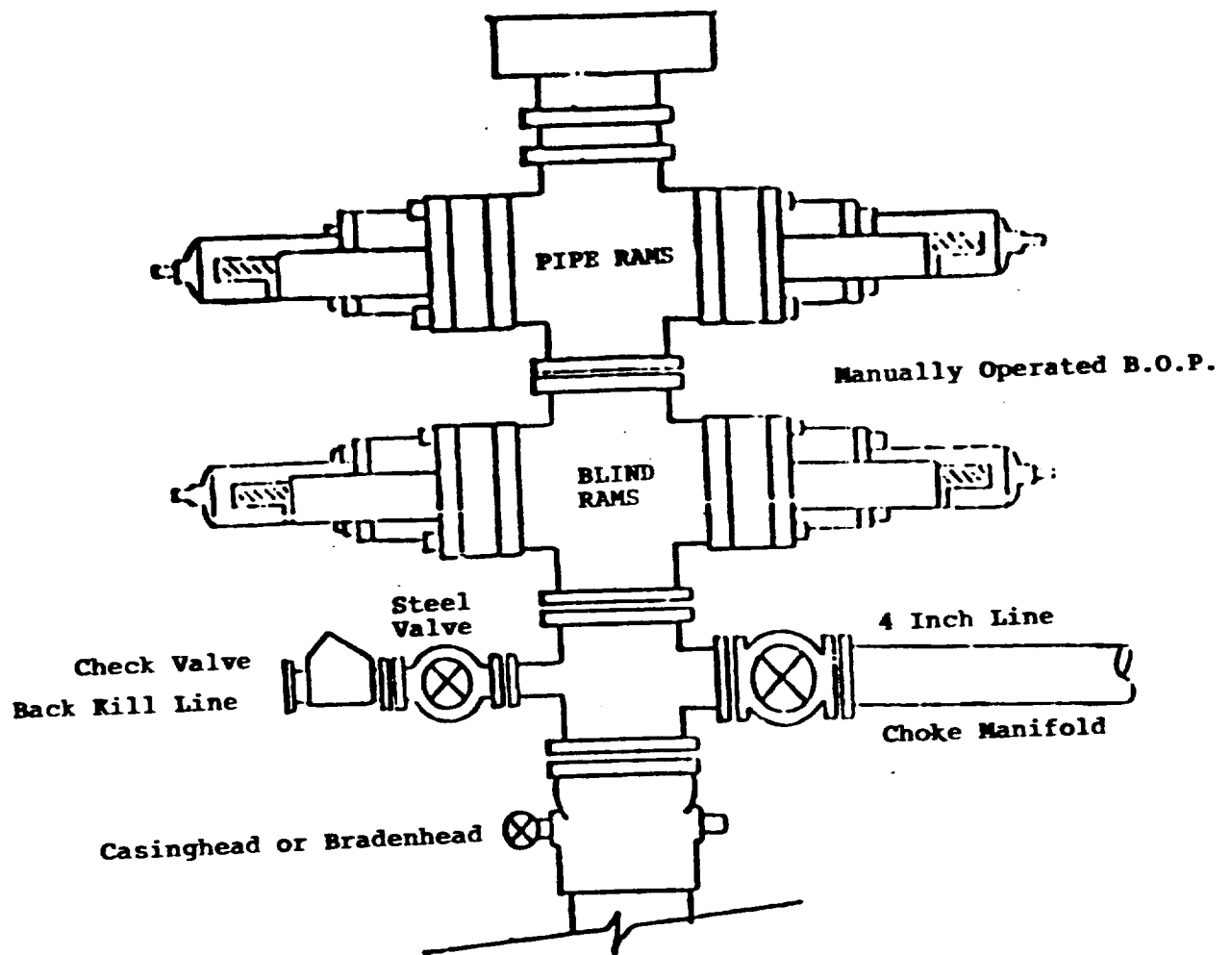
*Dan R. Reedy*

Certificate No.

**NM PE&LS NO. 5412**

0 330 660 990 1320 1650 1980 2310 2640 2970 3300 3630 0

**BOP DIAGRAM**  
**RATED 30000**



RECEIVED  
JUN 1 1987  
OCD  
HOBBS OFFICE

173