

DISTRICT I

P.O. Box 1980, Hobbs, NM 88241-1980

DISTRICT II

P.O. Box Drawer DD, Artesia, NM 88211-0719

DISTRICT III

1000 Rio Brazos Rd., Aztec, NM 87410

DISTRICT IV

P.O. Box 2088, Santa Fe, NM 87504-2088

State of New Mexico

Energy, Minerals and Natural Resources Department

OIL CONSERVATION DIVISION

P.O. Box 2088

Santa Fe, New Mexico 87504-2088

Form C-101

Revised February 10, 1994

Instructions on back

Submit to Appropriate District Office

State Lease - 6 Copies

Fee Lease - 5 Copies

☐ AMENDED REPORT

APPLICATION FOR PERMIT TO DRILL, RE-ENTER, DEEPEN, PLUGBACK, OR ADD A ZONE

¹ Operator Name and Address TEXACO EXPLORATION & PRODUCTION INC. 205 E. Bender, HOBBS, NM 88240		² OGRID Number 022351
⁴ Property Code 11122	⁵ Property Name CENTRAL VACUUM UNIT	³ API Number 30-025-30022
		⁶ Well No. 266

⁷ Surface Location

UI or lot no.	Section	Township	Range	Lot.Idn	Feet From The	North/South Line	Feet From The	East/West Line	County
H	36	17S	34E		1971	NORTH	1310	EAST	LEA

⁸ Proposed Bottom Hole Location If Different From Surface

UI or lot no.	Section	Township	Range	Lot.Idn	Feet From The	North/South Line	Feet From The	East/West Line	County
G	36	17S	34E		1971	NORTH	2630	EAST	LEA

⁹ Proposed Pool 1¹⁰ Proposed Pool 2

¹¹ Work Type Code P	¹² WellType Code O	¹³ Rotary or C.T. ROTARY	¹⁴ Lease Type Code S	¹⁵ Ground Level Elevation 4009' GL
¹⁶ Multiple No	¹⁷ Proposed Depth 4800' TV	¹⁸ Formation GRAYBURG/SA	¹⁹ Contractor	²⁰ Spud Date 10/13/99 08/31/1987

²¹ Proposed Casing and Cement Program

SIZE OF HOLE	SIZE OF CASING	WEIGHT PER FOOT	SETTING DEPTH	SACKS OF CEMENT	EST. TOP
24"	20"	133 #/ft	352	1000 sx, circulated	Surface
17 1/2"	13 3/8"	48 #/ft	1550	1450 sx, circulated	Surface
8 3/4"	7"	43 #/ft	4300	2000 sx, circulated	Surface

²² Describe the proposed program. If this application is to DEEPEN or PLUG BACK give the data on the present productive zone and proposed new productive zone. Describe the blowout prevention program, if any. Use additional sheets if necessary.

Objective: Texaco intends to directionally drill a 1320' horizontal lateral at approximately 270 degrees from north (due west direction).

1. MIRU pulling unit. Install BOP. POH with production equipment.
2. Run in hole with whipstock set at ~4300'. Run in hole with mill, motor, collars, and drill pipe.
3. Drill lateral to the west to a bottom hole location 1320' away. TOH.
4. Acidize lateral using 20-30 gal per foot of pay.
5. Retrieve whipstock.
6. Run production equipment and return to production.

Approved By: [Signature]
Date: 10/13/99

Plugback
Directionally

²³ I hereby certify that the rules and regulations of the Oil Conservation Division have been complied with and that the information given above is true and complete to the best of my knowledge and belief.

Signature

[Signature]

Printed Name James L. Anderson

Title Prod. Engineer

Date 10/5/99

Telephone 397-0420

OIL CONSERVATION DIVISION

ORIGINAL FILED

Approved By:

Title:

Approval Date: OCT 05 1999

Expiration Date:

Conditions of Approval:

Attached ☐

DISTRICT I

P.O. Box 1980, Hobbs, NM 88241-1980

DISTRICT II

P.O. Box Drawer DD, Artesia, NM 88211-0719

DISTRICT III

1000 Rio Brazos Rd., Aztec, NM 87410

DISTRICT IV

P.O. Box 2088, Santa Fe, NM 87504-2088

State of New Mexico

Energy, Minerals and Natural Resources Department

Form C-102

Revised February 10, 1994

Instructions on back

Submit to Appropriate District Office

State Lease - 4 Copies

Fee Lease - 3 Copies

☐ AMENDED REPORT

OIL CONSERVATION DIVISION

P.O. Box 2088

Santa Fe, New Mexico 87504-2088

WELL LOCATION AND ACREAGE DEDICATION PLAT

¹ API Number 30-025-30022	² Pool Code 62180	³ Pool Name VACUUM GRAYBURG SAN ANDRES
⁴ Property Code 11122	⁵ Property Name CENTRAL VACUUM UNIT	⁶ Well No. 266
⁷ OGRID Number 022351	⁸ Operator Name TEXACO EXPLORATION & PRODUCTION INC.	⁹ Elevation 4009' GL

¹⁰ Surface Location

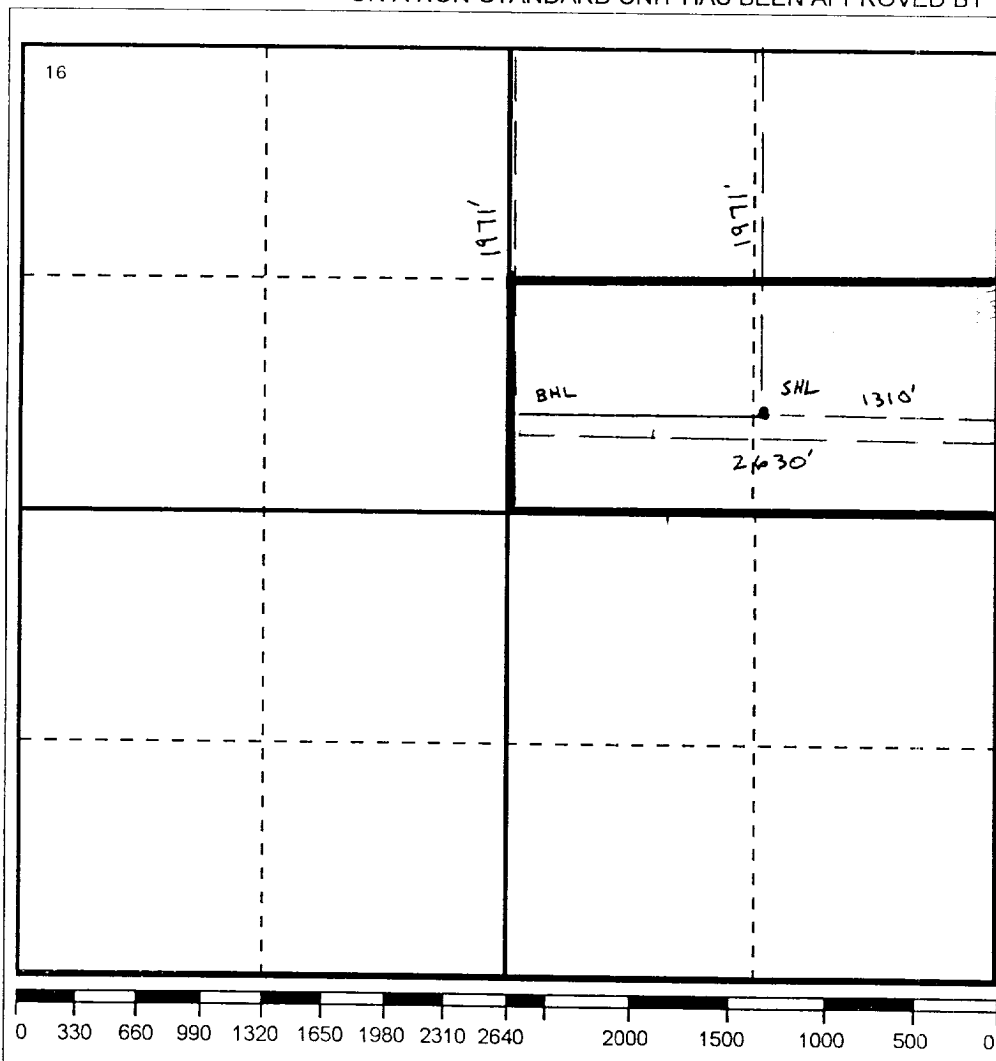
UI or lot no.	Section	Township	Range	Lot.Idn	Feet From The	North/South Line	Feet From The	East/West Line	County
H	36	17S	34E		1971	NORTH	1310	EAST	LEA

¹¹ Bottom Hole Location If Different From Surface

UI or lot no.	Section	Township	Range	Lot.Idn	Feet From The	North/South Line	Feet From The	East/West Line	County
G	36	17S	34E		1971	NORTH	2630	EAST	LEA

¹² Dedicated Acres 80	¹³ Joint or Infill No	¹⁴ Consolidation Code	¹⁵ Order No.
-------------------------------------	-------------------------------------	----------------------------------	-------------------------

NO ALLOWABLE WILL BE ASSIGNED TO THIS COMPLETION UNTIL ALL INTERESTS HAVE BEEN CONSOLIDATED
OR A NON-STANDARD UNIT HAS BEEN APPROVED BY THE DIVISION



17 OPERATOR CERTIFICATION
I hereby certify that the information contained herein is true and complete to the best of my knowledge and belief
Signature <i>James L. Anderson</i>
Printed Name James L. Anderson
Position Prod. Engineer
Date 10/5/99
18 SURVEYOR CERTIFICATION
I hereby certify that the well location shown on this plat was plotted from field notes of actual surveys made by me or under my supervision, and that the same is true and correct to the best of my knowledge and belief.
Date Surveyed
Signature & Seal of Professional Surveyor
Certificate No.

