

CO. OF COPIES RECEIVED
DISTRIBUTION
SANTA FE
FILE
U.S.G.S.
LAND OFFICE
OPERATOR

OIL CONSERVATION DIVISION
P. O. BOX 2088
SANTA FE, NEW MEXICO 87501

Form C-101 32-015 30022
Revised 10-1-78

3A. Indicate Type of Lease
STATE ☒ FEDERAL ☐
3. State Oil & Gas Lease No.
B-155

APPLICATION FOR PERMIT TO DRILL, DEEPEN, OR PLUG BACK

Type of Work
Type of Well DRILL ☒ DEEPEN ☐ PLUG BACK ☐
Oil Well ☒ Gas Well ☐ OTHER ☐
Name of Operator
Texaco Producing Inc.

7. Unit Agreement Name
8. Farm or Lease Name
Central Vacuum Unit

Address of Operator
P. O. Box 728, Hobbs, New Mexico 88240

9. Well No.
266
10. Field and Pool, or Wildcat
Vacuum Grayburg
San Andres

Location of Well
UNIT LETTER H LOCATED 1971 FEET FROM THE North LINE
1310 FEET FROM THE East LINE OF SEC. 36 TWP. 17-S REG. 34-EMPM

12. County
Lea

19. Proposed Depth
4750'
19A. Formation
Grayburg San Andres
20. Rotary or C.T.
Rotary
21A. Kind & Status Plug. Bond
Blanket
21B. Drilling Contractor
3993 GR
22. Approx. Date Work will start
8/31/87

PROPOSED CASING AND CEMENT PROGRAM

SIZE OF HOLE	SIZE OF CASING	WEIGHT PER FOOT	SETTING DEPTH	SACKS OF CEMENT	EST. TOP
26"	20"	94#	350'	1000	Circulate
17-1/2"	17-1/2"	54.5#	1550'	1500	Surface
12-1/4"	12-1/4"	36# & 40#	2800'	1600	Surface
8-1/2"	7"	23#	4300'	850	Surface

Cementing Program

SURFACE CASING: 1000 sacks Class "H" w/2% CaCl2 and 1/4# Flocele (15.6 ppg, 1.18 cu. ft./sx.).
1ST INTERMEDIATE CASING: 1250 sacks 50/50 Pozmix Class "H" w/2% CaCl2, 1/4# Flocele (14.15 ppg, 1.26 cu. ft./sx.) followed by 250 sacks Class "H" w/2% CaCl2, 1/4# Flocele (15.6 ppg, 1.18 cu. ft./sx.).
2ND INTERMEDIATE CASING: 1st Stage: 750 sacks 50/50 Pozmix Class "H" w/10# (14.15 ppg, 1.28 cu. ft./sx) followed by 250 sacks Class "H" w/2% CaCl2 (15.8 ppg, 1.18 cu. ft./sx).
2nd Stage: 600 sacks Class "H" w/2% CaCl2, (15.8 ppg, 1.18 cu. ft./sx). DV tool @ 1537'. ECP @ 1540'.
PRODUCTION CASING: 600 sacks 50/50 Pozmix Class "H" w/1/4# Flocele (14.15 ppg, 1.28 cu. ft./sx) followed by 250 sacks Class "H" w/1/4# flocele

OVER SPACE DESCRIBE PROPOSED PROGRAM: IF PROPOSAL IS TO DEEPEN OR PLUG BACK, GIVE DATA ON PRESENT PRODUCTIVE ZONE AND PROPOSED NEW PRODUCTION. GIVE BLOWOUT PREVENTER PROGRAM, IF ANY.

I certify that the information above is true and complete to the best of my knowledge and belief.
L. J. Seeman
Title Dist. Petr. Engr.
Date 8/19/87

ORIGINAL SIGNED BY JERRY SEXTON
DISTRICT 1 SUPERVISOR
DATE AUG 21 1987

Permit Expires 6 Months From Approval
Date Unless Drilling Underway.

RECEIVED
AUG 20 1987
OCD
HOBBS OFFICE

1. 1990年12月1日以前，
 2. 1990年12月1日以后，

CENTRAL VACUUM UNIT WELL NO. 266
VACUUM GRAYBURG SAN ANDRES
LEA COUNTY, NEW MEXICO

Continuation to Form C-101

Production Casing (continued)

(15.8 ppg, 1.18 cu. ft./sx.).

Hole from bottom of 7" casing to TD will be drilled w/6-1/8" bit and completed open hole. All other wells in this 1/4, 1/4 section are operated by Texaco. NSL - 2366 applies to this application.

All distances must be from the outer boundaries of the Section.

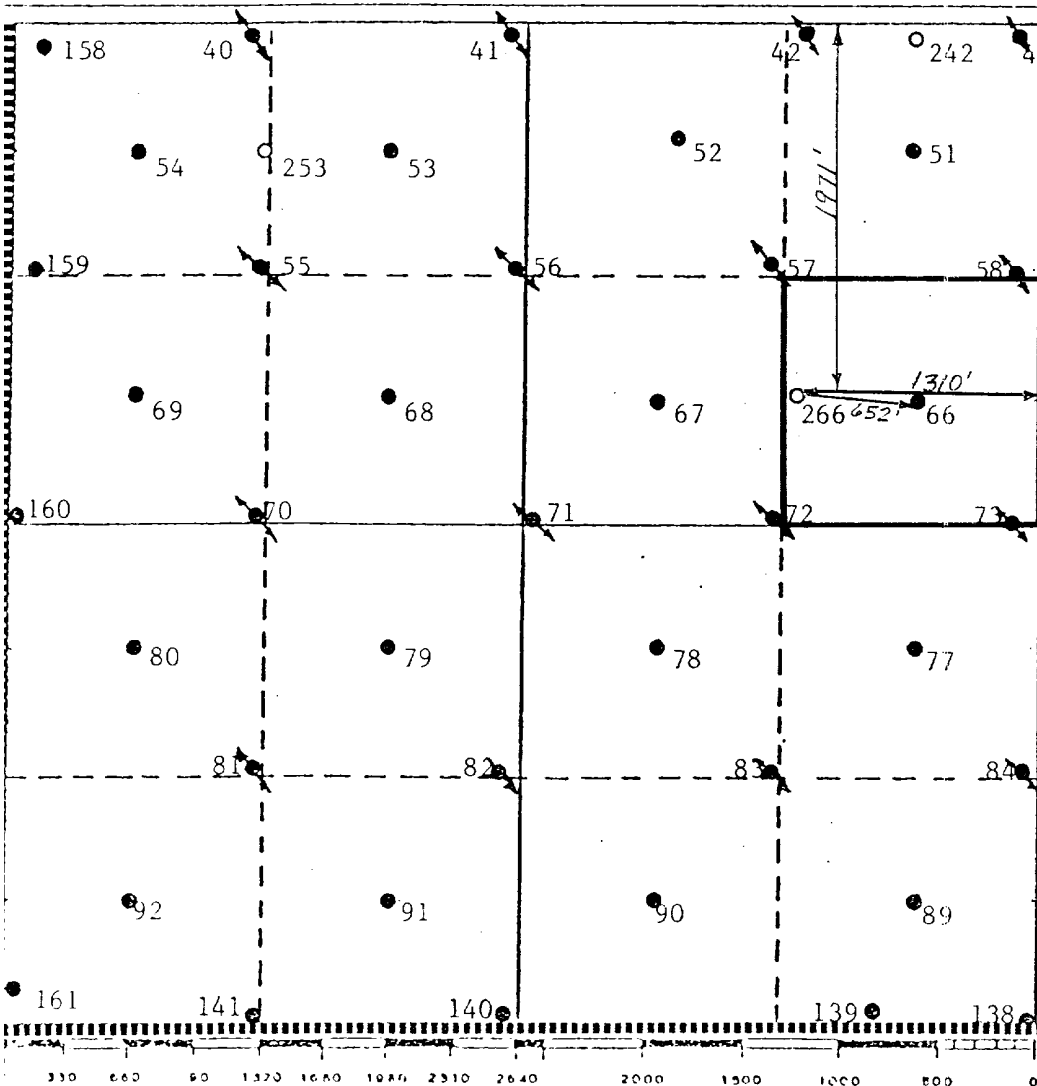
Operator Texaco Producing Inc.			Lease Central Vacuum Unit			Well No. 266		
Unit Letter H	Section 36	Township 17-S	Range 34-E	County Lea				
Actual Footage Location of Well:								
1971 feet from the North line and			1310 feet from the East line					
Ground Level Elev. 3993'		Producing Formation San Andres		Pool Vacuum (Grayburg-San Andres)			Dedicated Acreage: 40 Acres	

1. Outline the acreage dedicated to the subject well by colored pencil or hatchure marks on the plat below.
2. If more than one lease is dedicated to the well, outline each and identify the ownership thereof (both as to working interest and royalty).
3. If more than one lease of different ownership is dedicated to the well, have the interests of all owners been consolidated by communitization, unitization, force-pooling, etc?

☐ Yes ☐ No If answer is "yes," type of consolidation _____

If answer is "no," list the owners and tract descriptions which have actually been consolidated. (Use reverse side of this form if necessary.) _____

No allowable will be assigned to the well until all interests have been consolidated (by communitization, unitization, forced-pooling, or otherwise) or until a non-standard unit, eliminating such interests, has been approved by the Division.



CERTIFICATION

I hereby certify that the information contained herein is true and complete to the best of my knowledge and belief.

B. L. Eiland

Name

B. L. Eiland

Position

Division Surveyor

Company

Texaco Producing Inc.

Date

July 2, 1987

I hereby certify that the well location shown on this plat was plotted from field notes of actual surveys made by me or under my supervision, and that the same is true and correct to the best of my knowledge and belief.

Date Surveyed

NEW
June 30, 1987

Registered Professional Engineer and Land Surveyor

B. L. Eiland

Certificate No.

4386

				TEXACO, INC. WILKINS DIVISION WILKINS TEXAS							
SCALE	DATE	EST NO	DWG NO								
DRAWN BY											
CHECKED BY											
APPROVED BY											

EXHIBIT C

RECEIVED
AUG 20 1987
OCD
HOBBS OFFICE

11-13-87
183168104
11-13-87