

STATE OF NEW MEXICO  
ENERGY AND MINERALS DEPARTMENT

OIL CONSERVATION DIVISION  
P. O. BOX 2088  
SANTA FE, NEW MEXICO 87501

Form C-101  
Revised 10-1-78

NO. OF COPIES RECEIVED	
DISTRIBUTION	
SANTA FE	
FILE	
U.S.G.S.	
LAND OFFICE	
OPERATOR	

5A. Indicate Type of Lease  
STATE ☒ FEE ☐  
5. State Oil & Gas Lease No.  
**E-6005**

APPLICATION FOR PERMIT TO DRILL, DEEPEN, OR PLUG BACK

1a. Type of Work b. Type of Well DRILL <input checked="" type="checkbox"/> DEEPEN <input type="checkbox"/> PLUG BACK <input type="checkbox"/> OIL WELL <input checked="" type="checkbox"/> GAS WELL <input type="checkbox"/> OTHER <input type="checkbox"/> SINGLE ZONE <input type="checkbox"/> MULTIPLE ZONE <input checked="" type="checkbox"/>		7. Unit Agreement Name <b>N/A</b>
2. Name of Operator <b>Hadson Petroleum (USA), Inc.</b>		8. Farm or Lease Name <b>Pure State</b>
3. Address of Operator <b>P.O. Box 26770, Oklahoma City, Ok. 73126</b>		9. Well No. <b>3-36</b>
4. Location of Well UNIT LETTER <b>0</b> LOCATED <b>1,650</b> FEET FROM THE <b>East</b> LINE AND <b>990</b> FEET FROM THE <b>South</b> LINE OF SEC. <b>36</b> TWP. <b>19 s</b> RGE. <b>34 e</b> NMPM		10. Field and Pool, or Wildcat <b>Pearl Queen</b>
21. Elevations (Show whether DF, RT, etc.) <b>3,697.6 0L</b>		12. County <b>Lea</b>
21A. Kind & Status Plug. Bond <b>Statewide</b>	19. Proposed Depth <b>5,200</b>	19A. Formation <b>Queen &amp; Penrose</b>
21B. Drilling Contractor <b>Not Yet Known</b>	20. Rotary or C.T. <b>Rotary</b>	22. Approx. Date Work will start <b>September, 1987</b>

PROPOSED CASING AND CEMENT PROGRAM

SIZE OF HOLE	SIZE OF CASING	WEIGHT PER FOOT	SETTING DEPTH	SACKS OF CEMENT	EST. TOP

See PAGES 2-4 for casing, cementing, and pressure control information.

IN ABOVE SPACE DESCRIBE PROPOSED PROGRAM: IF PROPOSAL IS TO DEEPEN OR PLUG BACK, GIVE DATA ON PRESENT PRODUCTIVE ZONE AND PROPOSED NEW PRODUCTIVE ZONE. GIVE BLOWOUT PREVENTER PROGRAM, IF ANY.

I hereby certify that the information above is true and complete to the best of my knowledge and belief.

Signed W.P. Egan Title **Drilling & Production Engineer** Date **AUG 19 1987**

(This space for State Use)

Orig. Signed by  
**Paul Kautz**  
Geologist

APPROVED BY \_\_\_\_\_ TITLE \_\_\_\_\_ DATE **AUG 24 1987**

CONDITIONS OF APPROVAL, IF ANY:

Permit Expires 6 Months From Approval  
Date Unless Drilling Underway.

RECEIVED

AUG 21 1977

DCI  
HQBBS OFFICE

NEW MEXICO OIL CONSERVATION COMMISSION  
WELL LOCATION AND ACREAGE DEDICATION PLAT

Form C-102  
Supersedes C-120  
Effective 1-1-65

All distances must be from the outer boundaries of the Section.

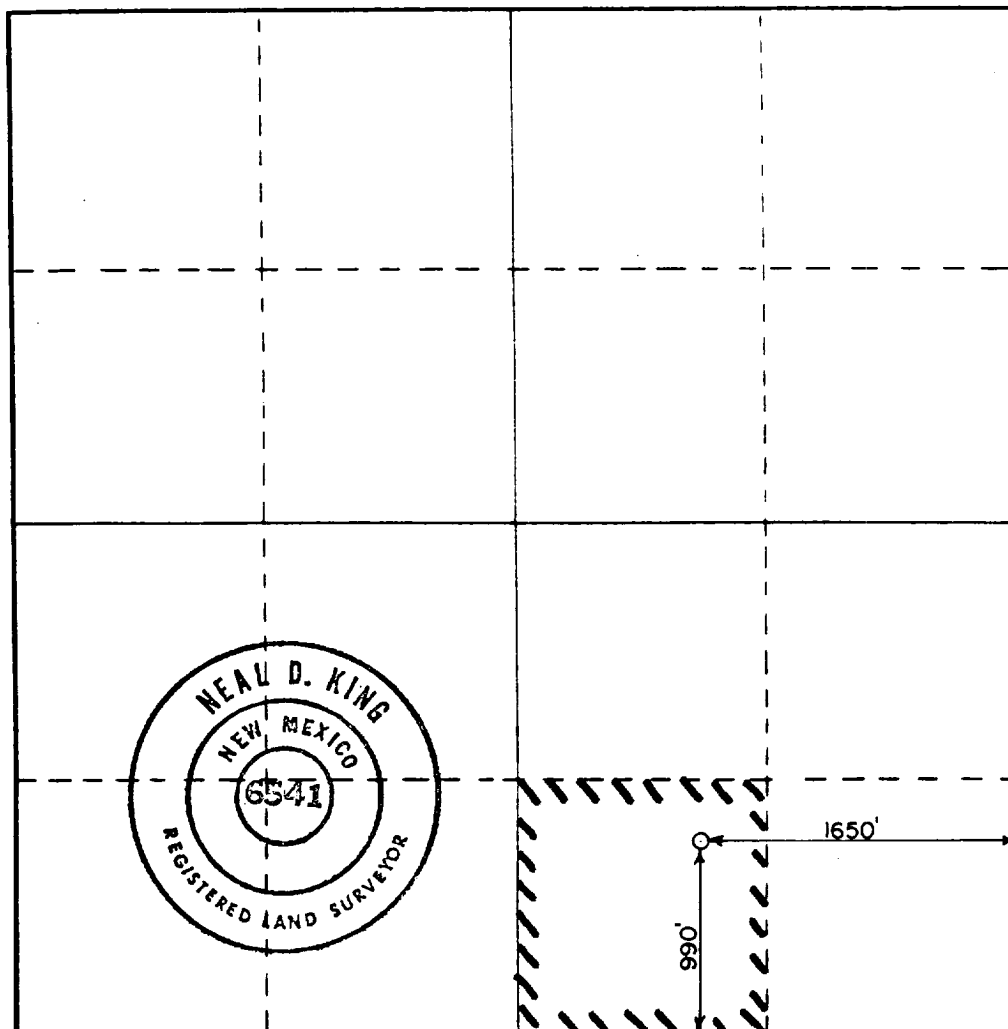
Operator Hadson Petroleum (USA), Inc.		Lease Pure State E-6005		Well No. 3
Unit Letter O	Section 36	Township 19 South	Range 34 East	County Lea
Actual Footage Location of Well: 990 feet from the South line and 1650 feet from the East line				
Ground Level Elev. 3697.6	Producing Formation Queen & Penrose	Pool Pearl Queen	Dedicated Acreage: 40 Acres	

1. Outline the acreage dedicated to the subject well by colored pencil or hachure marks on the plat below.
2. If more than one lease is dedicated to the well, outline each and identify the ownership thereof (both as to working interest and royalty).
3. If more than one lease of different ownership is dedicated to the well, have the interests of all owners been consolidated by communitization, unitization, force-pooling, etc?

☐ Yes ☐ No If answer is "yes," type of consolidation \_\_\_\_\_

If answer is "no," list the owners and tract descriptions which have actually been consolidated. (Use reverse side of this form if necessary.) \_\_\_\_\_

No allowable will be assigned to the well until all interests have been consolidated (by communitization, unitization, forced-pooling, or otherwise) or until a non-standard unit, eliminating such interests, has been approved by the Commission.



CERTIFICATION

I hereby certify that the information contained herein is true and complete to the best of my knowledge and belief

Name W.P. Ely  
Position Drilling & Production Engr.  
Company Hadson Petroleum (USA), Inc.  
Date AUG 19 1987

I hereby certify that the well location shown on this plat was plotted from field notes of actual surveys made by me or under my supervision, and that the same is true and correct to the best of my knowledge and belief.

July 1, 1987.

Date Surveyed July 1, 1987  
Registered Professional Engineer and/or Land Surveyor Neal D. King

6541

Certificate No.

RECEIVED  
AUG 21 1987  
OCD  
HOBBS OFFICE

Hadson Petroleum (USA), Inc.  
Pure State 3-36  
990' FSL & 1650' FEL  
Sec. 36, T. 19 S., R. 34 E.  
Lea County, New Mexico

PAGE 1

## 8 Point Drilling Program

### 1. FORMATION TOPS

The estimated tops of important geologic markers are:

<u>Formation Name</u>	<u>GL Depth*</u>	<u>KB Depth</u>	<u>Subsea Elevation</u>
Quaternary Dunes	000'	12'	+3,698'
Anhydrite	1,830'	1,842'	+1,868'
Yates	3,550'	3,562'	+ 148'
Seven Rivers	4,000'	4,012'	- 302'
Queen	4,600'	4,612'	- 902'
Middle Queen	4,760'	4,772'	-1,062'
Lower Queen	4,890'	4,902'	-1,192'
Penrose	4,930'	4,942'	-1,232'
Middle Penrose	5,000'	5,012'	-1,302'
Total Depth (TD)	5,200'	5,212'	-1,502'

\* ungraded ground level

### 2. NOTABLE ZONES

The estimated GL depths at which oil zones are expected to be encountered are:

Middle Queen: 4,760'-4,790'  
Lower Queen: 4,890'-4,910'  
Penrose: 4,930'-4,950'  
Middle Penrose: 5,000'-5,040'

The entire well will be cased. Surface casing will be cemented throughout its length. Production casing will be cemented through zones of interest. Water zones will be protected with casing and weighted mud. Fresh water

**Hadson Petroleum (USA), Inc.**  
**Pure State 3-36**  
**990' FSL & 1650' FEL**  
**Sec. 36, T. 19 S., R. 34 E.**  
**Lea County, New Mexico**

**PAGE 2**

encountered during drilling will be recorded by depth, cased, and cemented. Oil and gas shows will be tested to determine commercial potential.

### **3. PRESSURE CONTROL**

The drilling contract has not yet been awarded, thus the exact type of BOP to be used is not yet known. A schematic diagram of a typical 10" 3,000 psi BOP is on the following page. Whatever BOP is used will be tested to 1,500 psi when installed and prior to drilling out.

BOPs will be inspected at least daily to assure good mechanical working order. This inspection will be recorded on the daily drilling report. BOPs will be operated on trips.

### **4. CASING & CEMENTING**

The proposed casing program is:

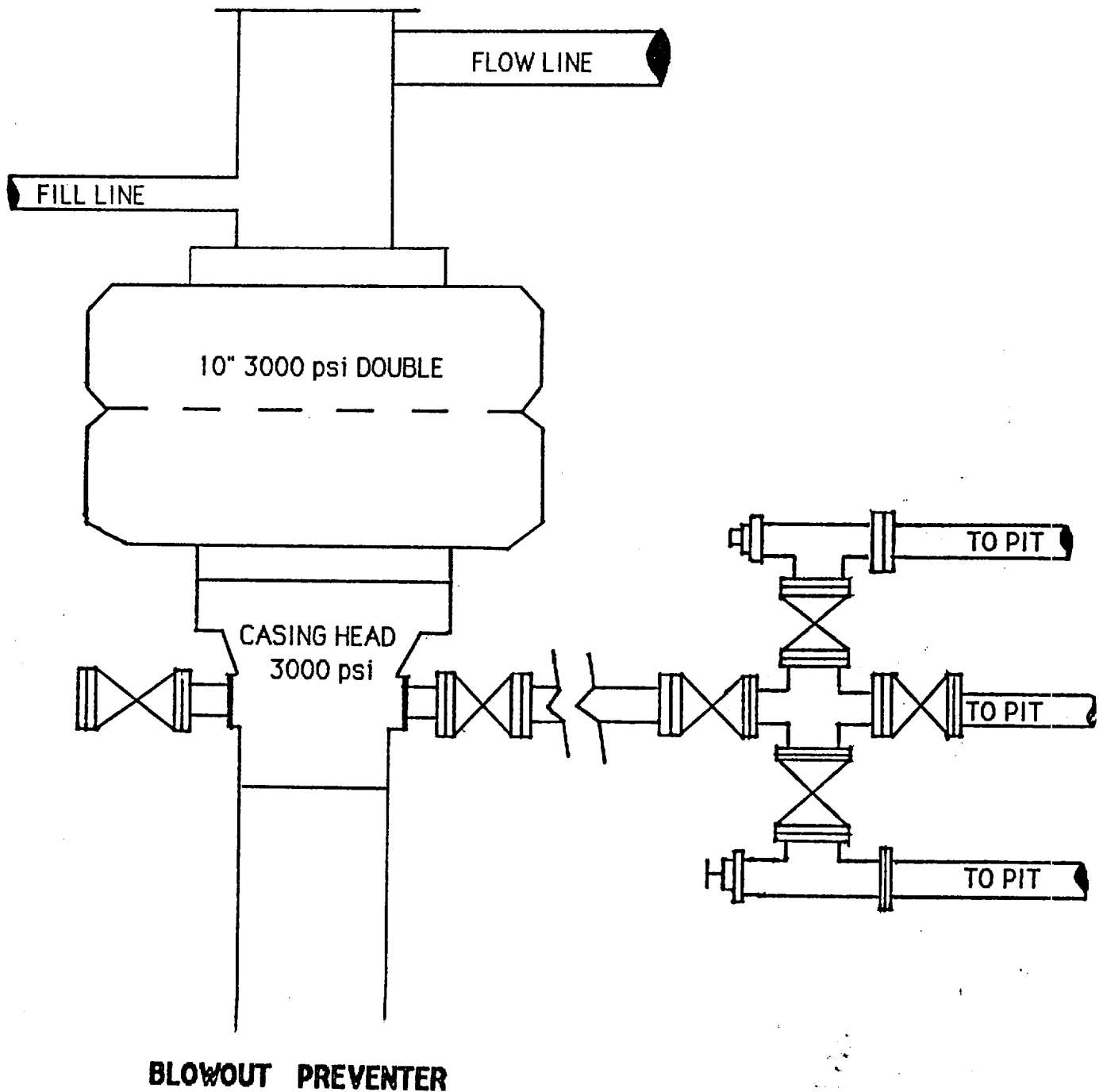
<u>Hole Size</u>	<u>O.D.</u>	<u>Weight (lb/foot)</u>	<u>Grade</u>	<u>Type</u>	<u>Age</u>	<u>GL Setting Depth</u>
12-1/4"	8-5/8"	24	K-55	ST&C	New	0'-1,000'
7-7/8"	5-1/2"	15.5	K-55	ST&C	New	0'-5,200'

Surface casing is calculated for 1,000' of fill with 100% excess. It will be cemented with 305 sx 65:35 C/POZ™ + 6% D20 gel + 2% CaCl<sub>2</sub> + 1/4 lb/sk D29 celloflake. Then tail with 200 sx Class C + 2% CaCl<sub>2</sub> + 1/4 lb/sk D29 celloflake.

Production casing is calculated for 1,500' of fill with 35% excess. It will be cemented with 245 sx 50:50 C/POZ + 2% D20 gel + 10% D44 salt (BWOW) + 1/4 lb/sk D29 celloflake.

Hadson Petroleum (USA), Inc.  
Pure State 3-36  
990' FSL & 1650' FEL  
Sec. 36, T. 19 S., R. 34 E.  
Lea County, New Mexico

PAGE 3



RECEIVED  
AUG 21 1987  
OCD  
HOBBS OFFICE



Hadson Petroleum (USA), Inc.  
Pure State 3-36  
990' FSL & 1,650' FEL  
Sec. 36, T. 19 S., R. 34 E.  
Lea County, New Mexico

PAGE 4

#### 5. MUD PROGRAM

<u>Depth</u>	<u>Type</u>	<u>Weight (lb/gal)</u>	<u>Viscosity</u>	<u>Water Loss</u>	<u>pH</u>
0'-400'	Gel/Lime	8.4-9.0	32-38	N.C.	10
400'-3300'	Water/Brine/Lime	8.6-10.0	28-30	N.C.	10-10.5
3300'-5200'	Salt Gel/Starch	10.0-10.1	35-40	10-15	10-10.5

Cottonseed hulls, fiber, paper, and oil will be on location in the event of lost circulation. A mud logging unit, gas detector, and flow sensor will also be present.

#### 6. CORING, TESTING, & LOGGING

No cores are anticipated. Drill stem tests (DSTs) are most likely to be run in the Lower Queen and Penrose zones. It is possible DSTs may also be run in the Yates and Seven Rivers zones. The following logs will be run:

GR-DLL: Base of Surface Casing (1,000') to Total Depth (5,200')

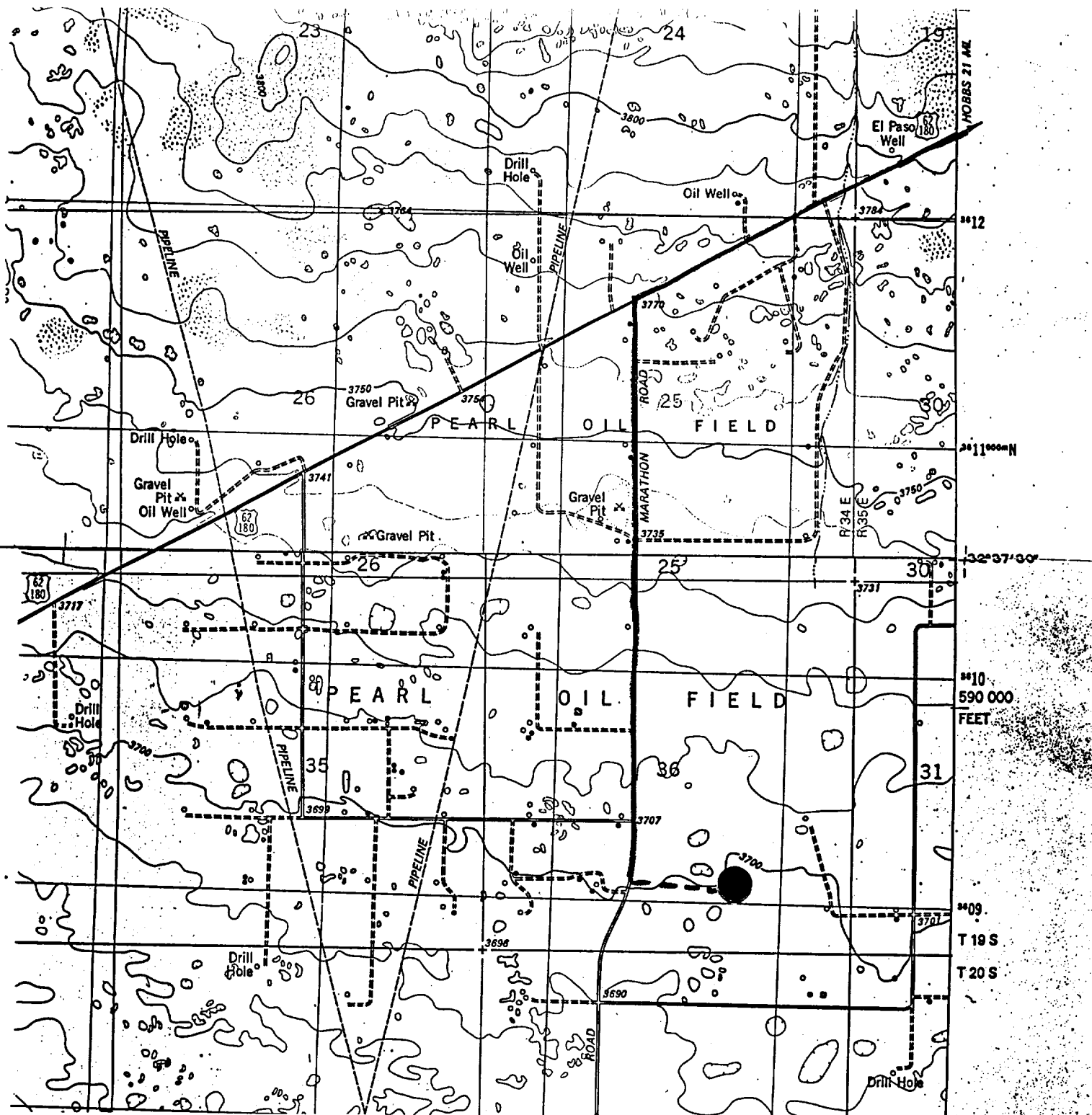
FDC-CNL: Selected intervals from 3,300' to Total Depth (5,200')

#### 7. DOWNHOLE CONDITIONS

No abnormal pressures, temperatures, or hydrogen sulfide are expected. Maximum bottom hole pressure will be 2,500 psi.

#### 8. OTHER INFORMATION

The anticipated spud date is September, 1987. It is expected it will take 7 days to drill the well and 10 days to complete it.



Directions to Hadson Petroleum (USA), Inc. Pure State 3-36 Well  
990' FSL & 1650' FEL Sec. 36, T. 19 S., R. 34 E., Lea County, NM

1. From the Hobbs airport, go 18.8 mi. west on US 62.
2. Then turn left and go south 1.6 mi. on the paved Marathon Road.
3. Then turn left just south of a Shell pipeline and go east 0.3 mi. on a new road.