

08 357

NEW MEXICO OIL CONSERVATION COMMISSION WELL LOCATION AND ACREAGE DEDICATION PLAT

 Form C-102
Supersedes C-128
Effective 10-65

All distances must be from the outer boundaries of the Section

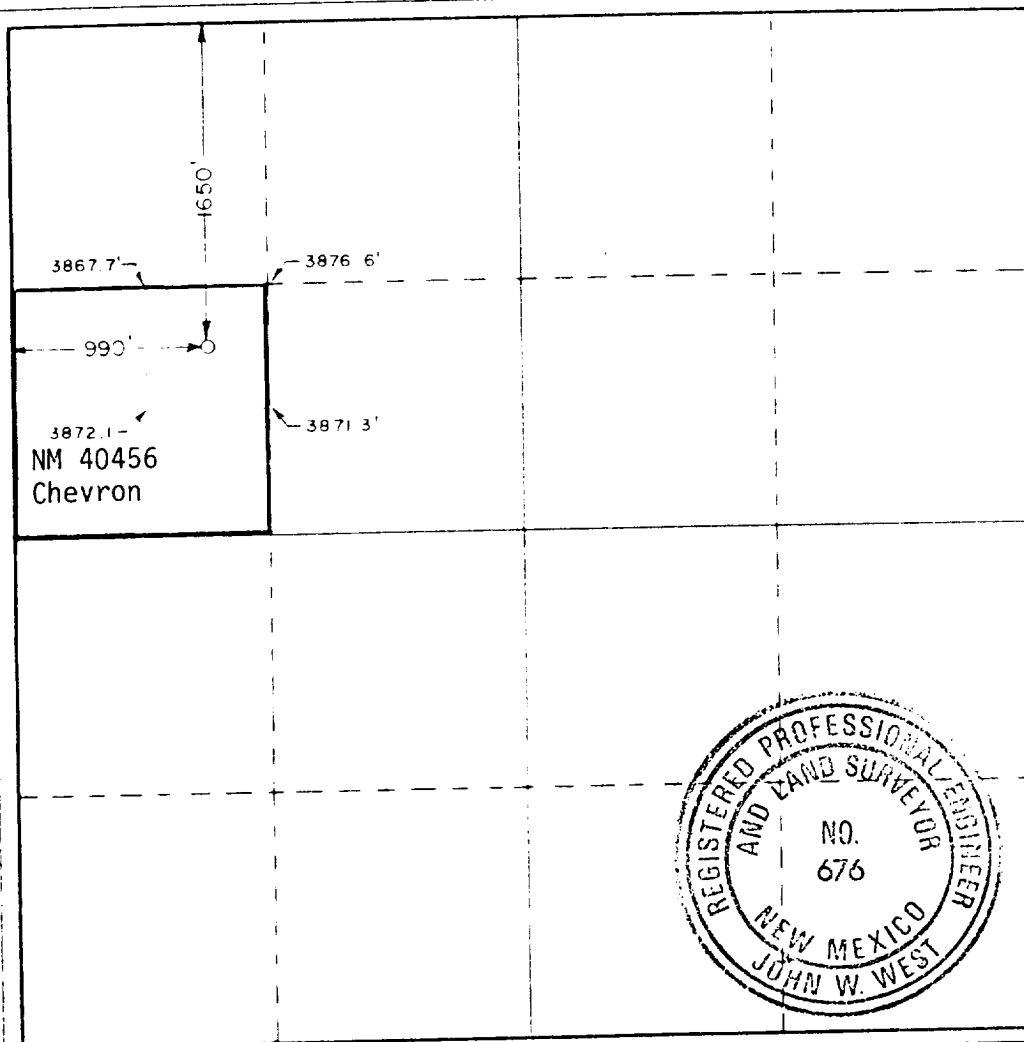
Lessor HARVEY E. YATES CO.		Lessee CHEVRON 12 FEDERAL		Well No. 2
Section E	Section 12	Township 18 SOUTH	Range 32 EAST	County LEA
Actual Location of Well:				
990 feet from the WEST line and		1650 feet from the NORTH line		
Ground Level Elev. 3874.0	Producing Formation Bone Springs	Depth North Young	Estimated Acreage 40	

- Outline the acreage dedicated to the subject well by colored pencil or hatchure marks on the plat below.
- If more than one lease is dedicated to the well, outline each and identify the ownership thereof (both as to working interest and royalty).
- If more than one lease of different ownership is dedicated to the well, have the interests of all owners been consolidated by communitization, unitization, force-pooling, etc?

☐ Yes ☐ No If answer is "yes," type of consolidation _____

If answer is "no," list the owners and tract descriptions which have actually been consolidated (Use reverse side of this form if necessary.) _____

No allowable will be assigned to the well until all interests have been consolidated (by communitization, unitization, forced-pooling, or otherwise) or until a non-standard unit, eliminating such interests, has been approved by the Commission.



CERTIFICATION

I hereby certify that the information contained herein is true and complete to the best of my knowledge and belief

N.M. Young
N.M. Young
Drilling Superintendent
Harvey E. Yates Co.
August 10, 1987

I hereby certify that the well location shown on this plat was plotted from field notes of actual surveys made by me or under my supervision, and that the same is true and correct to the best of my knowledge and belief

 Date Surveyed
AUGUST 1, 1987

 Registered Professional Engineer
and Land Surveyor

John W. West

 Certificate No. **JOHN W. WEST, 676**
RONALD J. EIDSON, 3239

RECEIVED
AUG 24 1987
OCD
MOBRS OFFICE