

NEW MEXICO OIL CONSERVATION COMMISSION WELL LOCATION AND ACREAGE DEDICATION PLAT

Form C-102
Supersedes C-128
Effective 1-1-65

All distances must be from the outer boundaries of the Section.

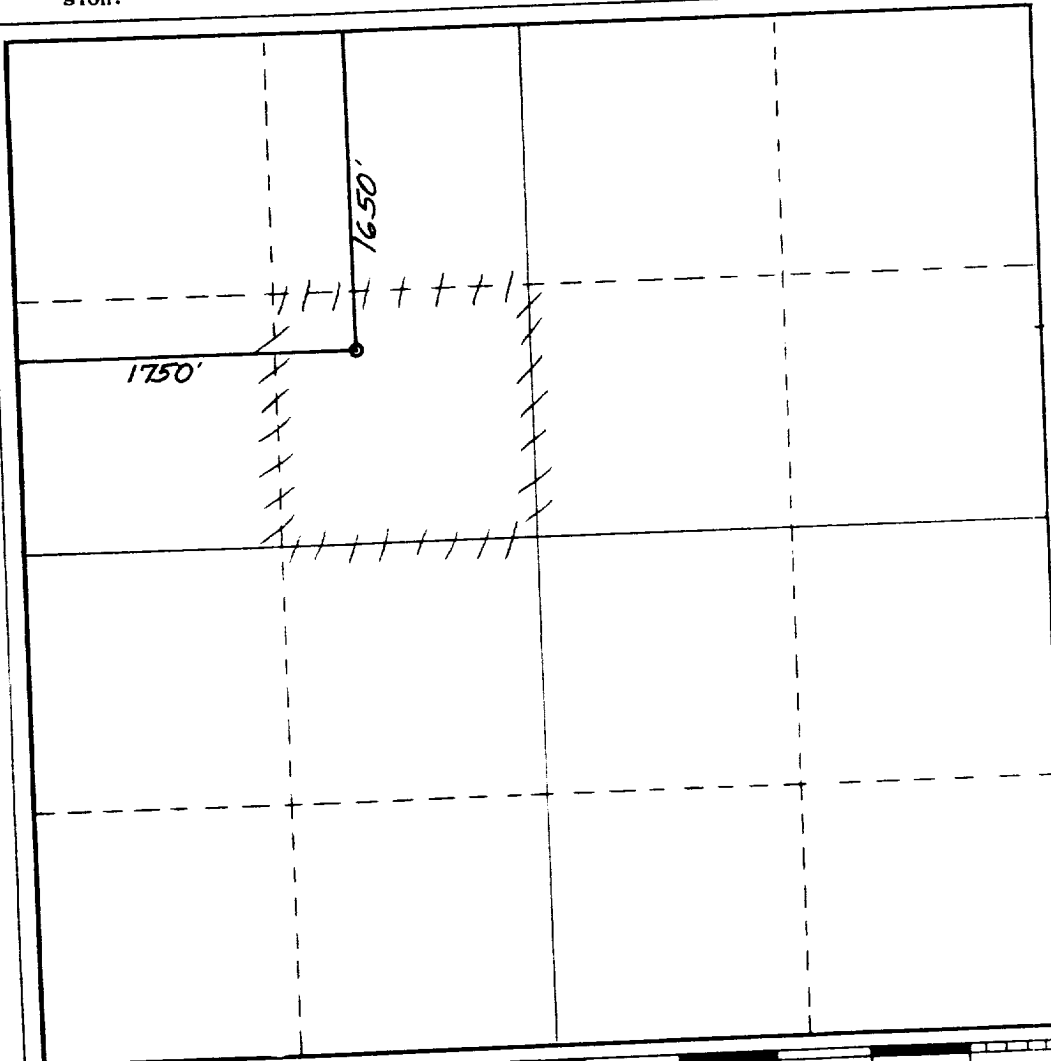
Operator SIETE OIL & GAS CORPORATION			Lease Jade Federal		Well No. 2
Unit Letter F	Section 19	Township 18 South	Range 32 East	County Lea	
Actual Footage Location of Well: 16 50 feet from the North line and 1750 feet from the West line					
Ground Level Elev. 3714.	Producing Formation Grayburg		Pool Y-SR-Q-GB-SA		Dedicated Acreage: 40 Acres

1. Outline the acreage dedicated to the subject well by colored pencil or hachure marks on the plat below.
2. If more than one lease is dedicated to the well, outline each and identify the ownership thereof (both as to working interest and royalty).
3. If more than one lease of different ownership is dedicated to the well, have the interests of all owners been consolidated by communitization, unitization, force-pooling, etc?

☐ Yes ☐ No If answer is "yes," type of consolidation _____

If answer is "no," list the owners and tract descriptions which have actually been consolidated. (Use reverse side of this form if necessary.) _____

No allowable will be assigned to the well until all interests have been consolidated (by communitization, unitization, forced-pooling, or otherwise) or until a non-standard unit, eliminating such interests, has been approved by the Commission.



CERTIFICATION

I hereby certify that the information contained herein is true and complete to the best of my knowledge and belief.

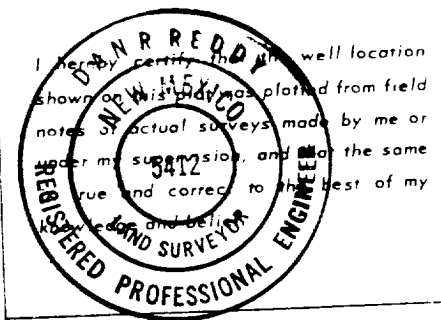
Harold D. Justice
Name

Harold D. Justice
Position

Drlg & Prod. Vice Pres.
Company

Siete Oil & Gas Corp.
Date

8/14/87



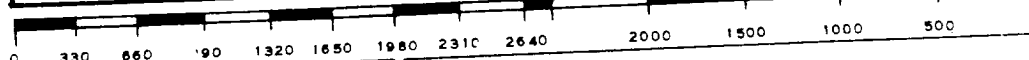
Date Surveyed

August 14, 1987

Registered Professional Engineer
and/or Land Surveyor

Dan R. Reddy
Certificate No.

NM PE&LS NO. 5412



RECEIVED

SEP 8 1987

OCD
HOBBS OFFICE