

STATE OF NEW MEXICO
ENERGY AND MINERALS DEPARTMENT

OIL CONSERVATION DIVISION

P. O. BOX 2088
SANTA FE, NEW MEXICO 87501

Form C-101
Revised 10-1-78

NO. OF COPIES RECEIVED		
DISTRIBUTION		
SANTA FE		
FILE		
U.S.G.S.		
LAND OFFICE		
OPERATOR		

API No. 30-025-

5a. Indicate Type of Lease
State <input checked="" type="checkbox"/> Fee <input type="checkbox"/>

5. State Oil & Gas Lease No.
B-4118

APPLICATION FOR PERMIT TO DRILL, DEEPEN OR PLUG BACK

- 1a. Type of Work
DRILL ☒ DEEPEN ☐ PLUG BACK ☐
- b. Type of Well
Oil Well ☒ Gas Well ☐ Other ☐ Single Zone ☒ Multiple Zone ☐

7. Unit Agreement Name

8. Farm or Lease Name
Lea

2. Name of Operator
Phillips Petroleum Company

9. Well No.
36

3. Address of Operator
4001 Penbrook Street, Odessa, Texas 79762

10. Field and Pool, or Wildcat
Vacuum Gb/SA

4. Location of Well
Unit Letter A Located 660 feet From the North Line
And 660 Feet From The East Line of Sec. 29 TWP. 17-S RGE 34-E NMPM

12. County
Lea

19. Proposed Depth
4900'

19A. Formation
Grayburg/SA

20. Rotary or C.T.
Rotary

21. Elevations (Show whether DF, RT, etc.)
4081.8' GR (Unprepared)

21A. Kind & Status Plug. Bond
Blanket

21B. Drilling Contractor
Will advise later

22. Approx. Date Work Will Start
Upon approval

23. PROPOSED CASING AND CEMENT PROGRAM

SIZE OF HOLE	SIZE OF CASING	WEIGHT PER FOOT	SETTING DEPTH	SACKS OF CEMENT	EST. TOP
12-1/4"	8-5/8"	24 # K-55	1500' RKB	1000 Sx Class "C"	Surface
7-7/8"	5-1/2"	15.5 # K-55	4800' RKB	1400 Sx	Surface

(Caliper volume plus 30% excess. Lead: Estimated 1000 sx Class "C" w/5% salt; tail with 400 sx Class "C" w/5% salt.)

Use mud additives as required for control.

BOP EQUIP: Series 900, 3000# WP (See attached schematic - Figure 7-9 or 7-10.)

In above space describe proposed program: If proposal is to deepen or plug back, give data on present productive zone and proposed new productive zone. Give blowout preventer program, if any.

I hereby certify that the information above is true and complete to the best of my knowledge and belief.

SIGNED W. J. Mueller TITLE Engineering Supervisor, Resv. DATE September 23, 1987

ORIGINAL SIGNED BY JERRY SEXTON

APPROVED BY DISTRICT I SUPERVISOR

TITLE

SEP 29 1987
DATE

CONDITIONS OF APPROVAL, IF ANY:

Permit Expires 6 Months From Approval
Date Unless Drilling Underway.

NEW MEXICO OIL CONSERVATION COMMISSION
WELL LOCATION AND ACREAGE DEDICATION PLAT

Form C-102
Supersedes C-128
Effective 1-1-55

All distances must be from the outer boundaries of the Section

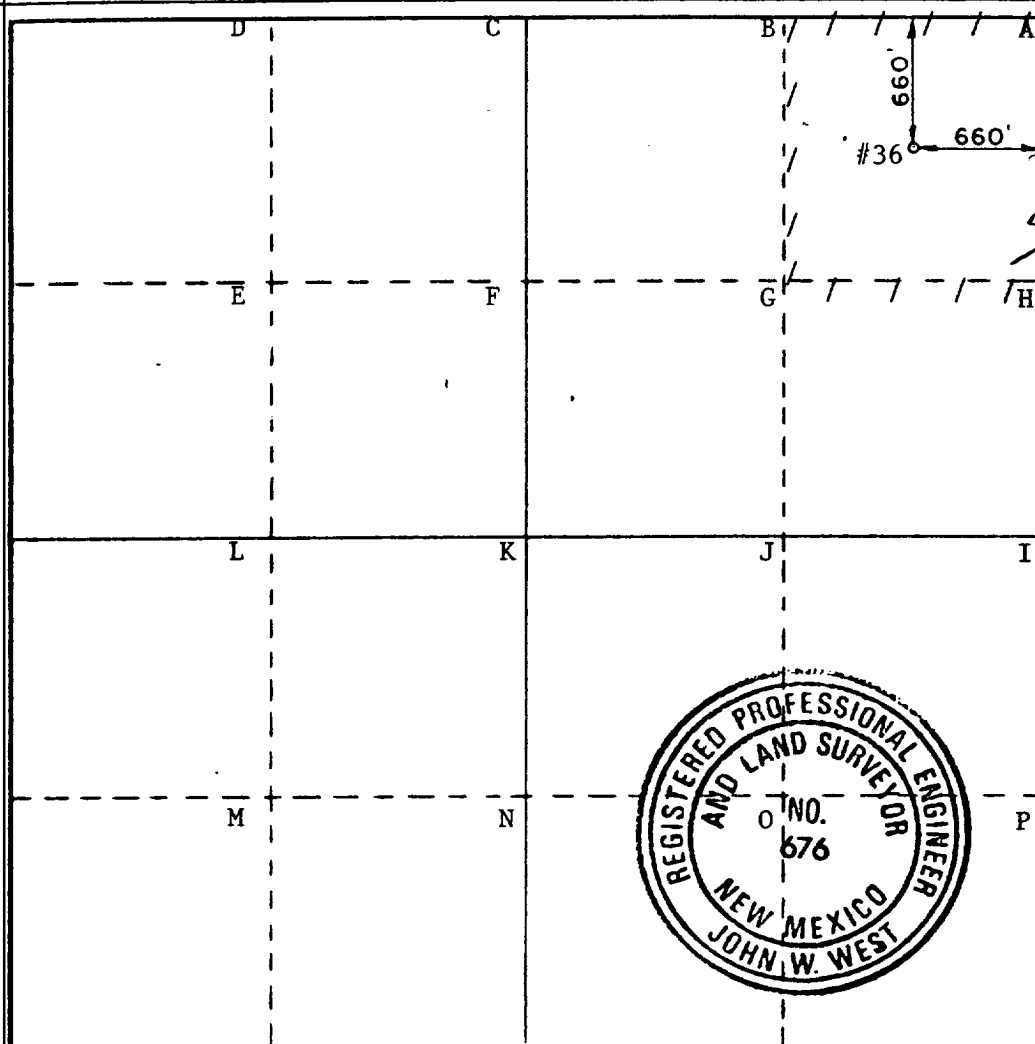
Operator Phillips Petroleum Co.			Lease Lea		Well No. 36
Unit Letter A	Section 29	Township 17 South	Range 34 East	County Lea	
Actual Footage Location of Well: 660 feet from the North line and 660 feet from the East line					
Ground Level Elev. 4081.8	Producing Formation Grayburg-San Andres		Pool Vacuum-Grayburg/San Andres	Dedicated Acreage 40 Acres	

1. Outline the acreage dedicated to the subject well by colored pencil or hachure marks on the plat below.
2. If more than one lease is dedicated to the well, outline each and identify the ownership thereof (both as to working interest and royalty).
3. If more than one lease of different ownership is dedicated to the well, have the interests of all owners been consolidated by communitization, unitization, force-pooling, etc?

☐ Yes ☐ No If answer is "yes," type of consolidation _____

If answer is "no," list the owners and tract descriptions which have actually been consolidated. (Use reverse side of this form if necessary.) _____

No allowable will be assigned to the well until all interests have been consolidated (by communitization, unitization, forced-pooling, or otherwise) or until a non-standard unit, eliminating such interests, has been approved by the Commission.



CERTIFICATION

I hereby certify that the information contained herein is true and complete to the best of my knowledge and belief.

Signature
W. J. Mueller

Position
Engineering Supervisor, Resv.

Company
Phillips Petroleum Company

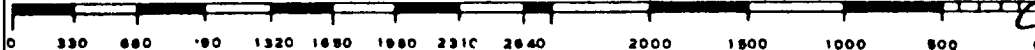
Date
September 23, 1987

I hereby certify that the well location shown on this plat was plotted from field notes of actual surveys made by me or under my supervision, and that the same is true and correct to the best of my knowledge and belief.

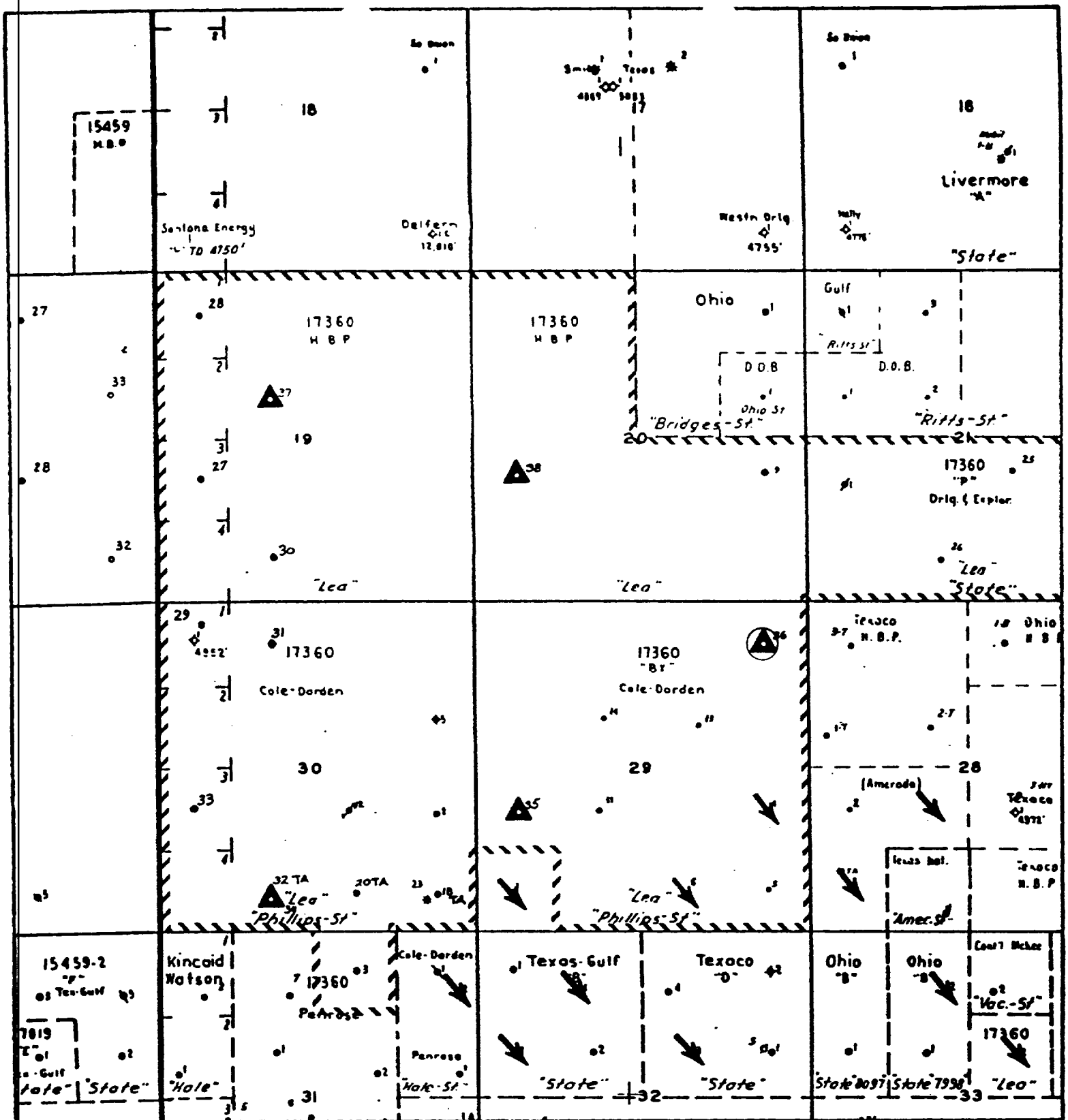
Date Surveyed
September 1, 1987

Registered Professional Engineer and/or Land Surveyor

Signature
John W. West
Certificate No. **JOHN W. WEST, 676**
RONALD J. EIDSON, 3239



RECEIVED
SEP 28 1987
OCD
HOBBS OFFICE



Existing Injector →

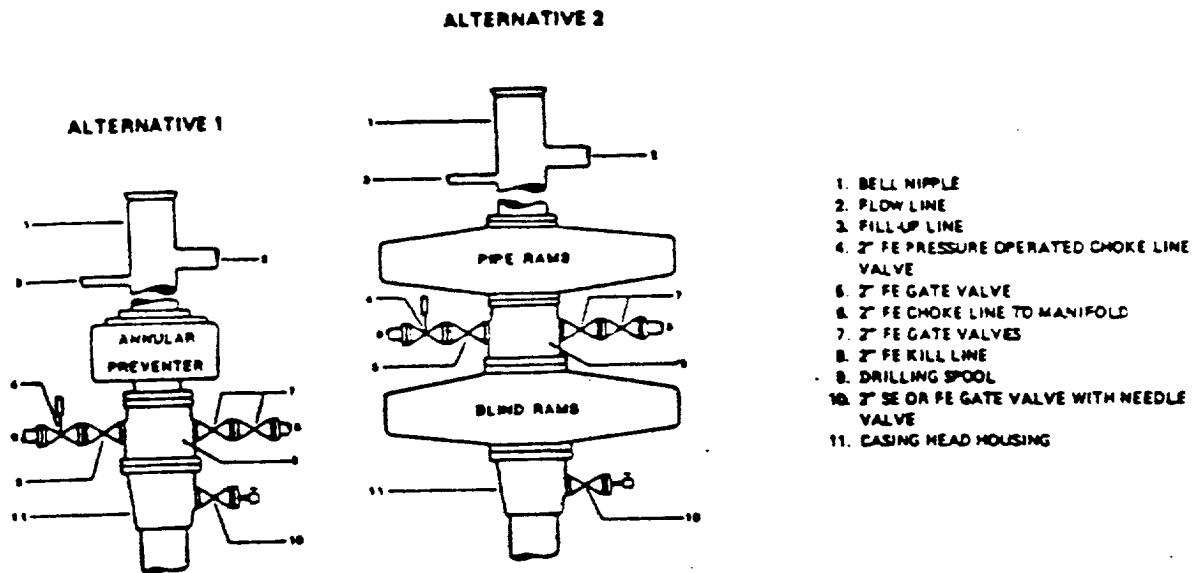
New Well Location ▲

PHILLIPS PETROLEUM COMPANY
 Lea Lease Waterflood
 Lea County, New Mexico

0 2000' 4000'
 SCALE

NOTE: Any existing wells contained within quarter-quarter section of proposed new well are operated by Phillips Petroleum Co.

FIELD PRACTICES AND STANDARDS



NOTE: THE DRILLING SPOOL MAY BE LOCATED BELOW BOTH SETS OF RAMS IF A DOUBLE PREVENTER IS USED AND IT DOES NOT HAVE SUITABLE OUTLETS BETWEEN RAMS

Figure 7-9. Standard Hydraulic Blowout Preventer Assembly
(2 M or 3 M Working Pressure) Alternative 1

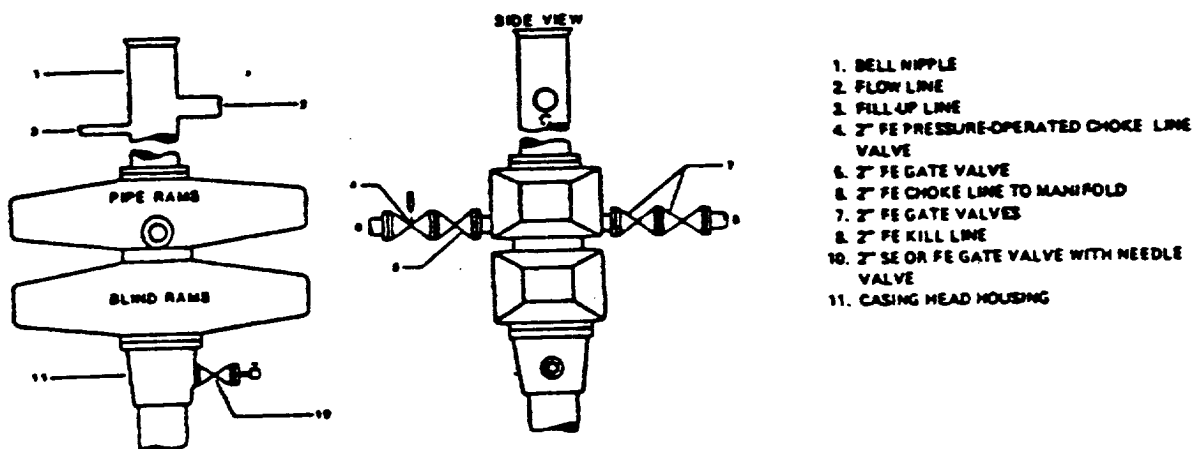


Figure 7-10. Standard Hydraulic Blowout Preventer Assembly
(2 M or 3 M Working Pressure) Alternative 3 (without Drilling Spool)

RECEIVED
SEP 21 1964
OFFICE
HOBBS OFFICE

173