

Submit to Appropriate
District Office
State Lease - 6 copies
Fee Lease - 5 copies

State of New Mexico
Energy, Minerals and Natural Resources Department

Form C-101
Revised 1-1-89

OIL CONSERVATION DIVISION

DISTRICT I
P.O. Box 1980, Hobbs, NM 88240

DISTRICT II
P.O. Drawer DD, Artesia, NM 88210

DISTRICT III
1000 Rio Brazos Rd., Aztec, NM 87410

P.O. Box 2088
Santa Fe, New Mexico 87504-2088

API NO. (assigned by OCD on New Wells)
30-025-30110

5. Indicate Type of Lease
STATE ☒ FEE ☐

6. State Oil & Gas Lease No.
V-1687

APPLICATION FOR PERMIT TO DRILL, DEEPEN, OR PLUG BACK

1a. Type of Work:

DRILL ☐ RE-ENTER ☒ DEEPEN ☐ PLUG BACK ☐

b. Type of Well:

OIL WELL ☒ GAS WELL ☐ OTHER ☐
SINGLE ZONE ☒ MULTIPLE ZONE ☐

7. Lease Name or Unit Agreement Name

Marathon-State

2. Name of Operator

Tom Schneider

8. Well No.

1

3. Address of Operator

505 North Big Spring, Suite 204 Midland, Texas 79701

9. Pool name or Wildcat

Wildcat

4. Well Location

Unit Letter B : 1300 Feet From The North Line and 1980 Feet From The East Line

Section 27 Township 17S Range 36E NMPM Lea County

10. Proposed Depth

5350

11. Formation

Premier (GA)

12. Rotary or C.T.

Rotary

13. Elevations (Show whether DF, RT, GR, etc.)

3836 GR.

14. Kind & Status Plug. Bond

Single

15. Drilling Contractor

Unknown

16. Approx. Date Work will start

10/20/89

17. PROPOSED CASING AND CEMENT PROGRAM

SIZE OF HOLE	SIZE OF CASING	WEIGHT PER FOOT	SETTING DEPTH	SACKS OF CEMENT	EST. TOP
17 1/2	13 3/8	54.5	417	420	STC.
12 1/4	9 5/8	40	4475	1970	STC.

Propose to Reenter Marathon Oil Co. #1 State V 1687 (TD 12,355) and clean out to 5350' - Run 5 1/2" Casing and attempt completion in Premier Sand between 5168 & 5179 Feet.

IN ABOVE SPACE DESCRIBE PROPOSED PROGRAM: IF PROPOSAL IS TO DEEPEN OR PLUG BACK, GIVE DATA ON PRESENT PRODUCTIVE ZONE AND PROPOSED NEW PRODUCTIVE ZONE. GIVE BLOWOUT PREVENTER PROGRAM, IF ANY.

I hereby certify that the information above is true and complete to the best of my knowledge and belief.

SIGNATURE

TITLE Operator

DATE 10-4-89

TYPE OR PRINT NAME Tom Schneider

TELEPHONE NO. (915) 682-6340

(This space for State Use)

ORIGINAL SIGNED BY JERRY SEXTON
DISTRICT I SUPERVISOR

OCT 16 1989

APPROVED BY

TITLE

DATE

CONDITIONS OF APPROVAL, IF ANY:

Approved for re-entry work only -- production will not be authorized until unorthodox location has been approved for the Grayburg formation.

Submit to Appropriate
District Office
State Lease - 4 copies
Fee Lease - 3 copies

State of New Mexico
Energy, Minerals and Natural Resources Department

Form C-102
Revised 1-1-89

OIL CONSERVATION DIVISION

DISTRICT I
P.O. Box 1980, Hobbs, NM 88240

P.O. Box 2088
Santa Fe, New Mexico 87504-2088

DISTRICT II
P.O. Drawer DD, Artesia, NM 88210

DISTRICT III
1000 Rio Brazos Rd., Aztec, NM 87410

WELL LOCATION AND ACREAGE DEDICATION

All Distances must be from the outer boundaries of the section.

Operator Tom Schneider		Lease Marathon-State	
Unit Letter B	Section 27	Township 17S	Range 36E
Actual Footage Location of Well: 1300 feet from the North line and 1980			
Ground level Elev. 3836	Producing Formation Premier <i>Grayburg</i>		Pool Wildcat

1. Outline the acreage dedicated to the subject well by colored pencil or hatchure marks on the plat below.

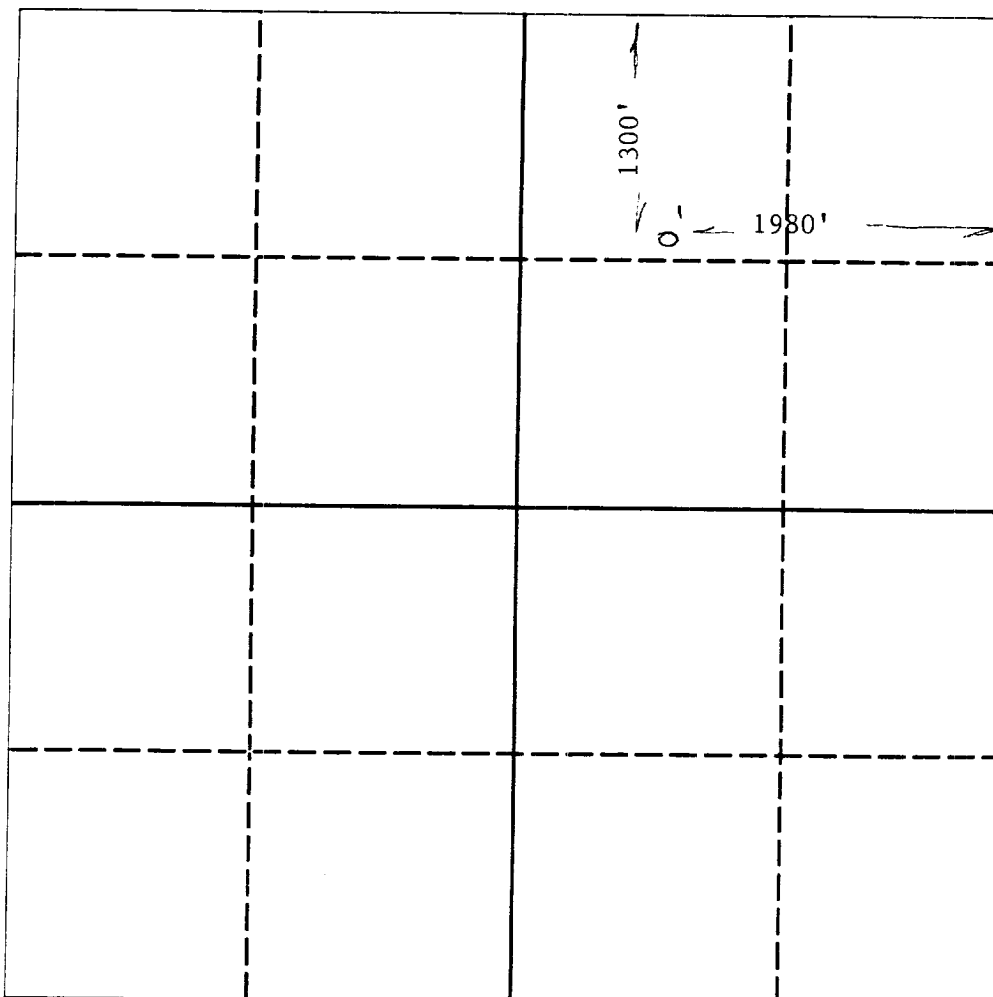
2. If more than one lease is dedicated to the well, outline each and identify the ownership thereof (both as

3. If more than one lease of different ownership is dedicated to the well, have the interest of all owners been unitization, force-pooling, etc.?

☐ Yes ☒ No If answer is "yes" type of consolidation

If answer is "no" list the owners and tract descriptions which have actually been consolidated. (Use reverse this form if necessary.)

No allowable will be assigned to the well until all interests have been consolidated (by communitization, unitization, forced-pooling, or otherwise) has been approved by the Division.



.AT

Well No. 1	
County Lea	
PM	
om the East line	
Dedicated Acreage: 40 Acres	

working interest and royalty).

isolated by communitization,

of

tion, forced-pooling, or otherwise)

OPERATOR CERTIFICATION

I hereby certify that the information contained herein is true and complete to the best of my knowledge and belief.

Tom Schneider
Signature

Tom Schneider

Printed Name

Operator

Position

Tom Schneider

Company

10-4-89

Date

SURVEYOR CERTIFICATION

I hereby certify that the well location shown on this plat was plotted from field notes of actual surveys made by me or under my supervision, and that the same is true and correct to the best of my knowledge and belief.

Date Surveyed

Signature & Seal of
Professional Surveyor

Certificate No.

**N MEXICO OIL CONSERVATION COMMISSION
WELL LOCATION AND ACREAGE DEDICATION PLAT**

Form C-102
Supersedes C-128
Effective 1-1-65

All distances must be from the outer boundaries of the Section

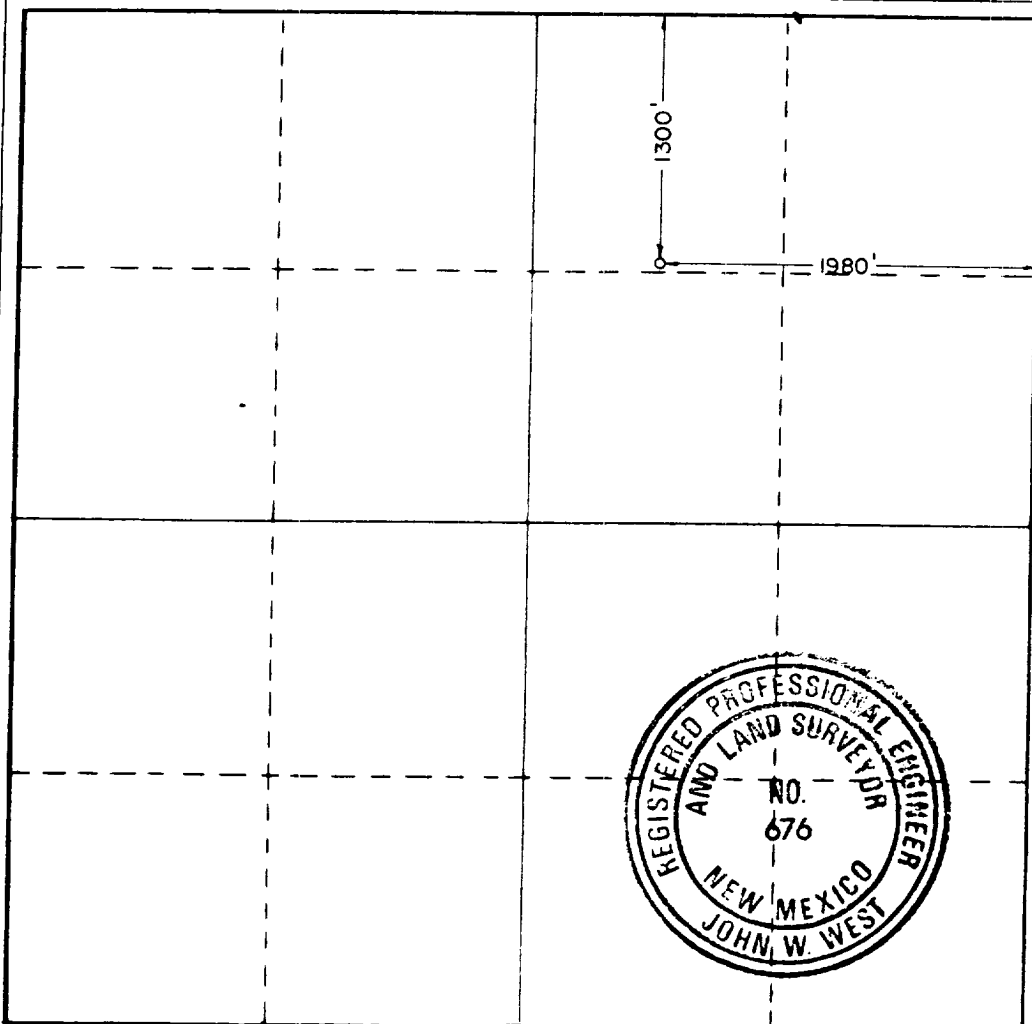
Operator Marathon Oil Company			Lease State Section 27		Well No. 1
Unit Letter B	Section 27	Township 17 South	Range 36 East	County Lea	
Actual Footage Location of Well: <div style="display: flex; justify-content: space-between;"> 1300 feet from the north line and 1980 feet from the east line </div>					
Ground Level Elev. 3835.6	Producing Formation		Pool	Dedicated Acreage: Acres	

1. Outline the acreage dedicated to the subject well by colored pencil or hatchure marks on the plat below.
2. If more than one lease is dedicated to the well, outline each and identify the ownership thereof (both as to working interest and royalty).
3. If more than one lease of different ownership is dedicated to the well, have the interests of all owners been consolidated by communitization, unitization, force-pooling, etc?

☐ Yes ☐ No If answer is "yes," type of consolidation _____

If answer is "no," list the owners and tract descriptions which have actually been consolidated. (Use reverse side of this form if necessary.) _____

No allowable will be assigned to the well until all interests have been consolidated (by communitization, unitization, forced-pooling, or otherwise) or until a non-standard unit, eliminating such interests, has been approved by the Commission.



CERTIFICATION

I hereby certify that the information contained herein is true and complete to the best of my knowledge and belief.

Name _____

Position _____

Company _____

Date _____

I hereby certify that the well location shown on this plat was plotted from field notes of actual surveys made by me or under my supervision, and that the same is true and correct to the best of my knowledge and belief.

Date Surveyed _____

September 28, 1987

Registered Professional Engineer
and/or Land Surveyor

[Signature]

Certificate No. **JOHN W. WEST, 676**

RONALD J. EIDSON, 3239

