

NO. OF COPIES RECEIVED	
DISTRIBUTION	
SANTA FE	
FILE	
U.S.G.S.	
LAND OFFICE	
OPERATOR	

P. O. BOX 2088
SANTA FE, NEW MEXICO 87501

3A. Indicate Type of Lease
STATE <input checked="" type="checkbox"/> FEDERAL <input type="checkbox"/>
3. State Oil & Gas Lease No.
B-155

APPLICATION FOR PERMIT TO DRILL, DEEPEN, OR PLUG BACK

Type of Work		7. Unit Agreement Name	
Type of Well	DRILL <input checked="" type="checkbox"/> DEEPEN <input type="checkbox"/> PLUG BACK <input type="checkbox"/>	8. Farm or Lease Name	
OIL WELL <input checked="" type="checkbox"/> GAS WELL <input type="checkbox"/> OTHER	SINGLE TONG <input checked="" type="checkbox"/> MULTIPLE TONG <input type="checkbox"/>	N.M. "O" State NCT-1	
Name of Operator		9. Well No.	
Texaco Producing Inc.		27	
Address of Operator		10. Field and Pool, or Wildcat	
P. O. Box 728, Hobbs, New Mexico 88240		Vacuum Glorieta	
Location of Well		12. County	
UNIT LETTER <u>P</u> LOCATED <u>990</u> FEET FROM THE <u>South</u> LINE		Lea	
<u>990</u> FEET FROM THE <u>East</u> LINE OF SEC. <u>36</u> TWP. <u>17-S</u> SEC. <u>34-E</u> NMPM			
19. Proposed Depth		19A. Formation	
6290'		Glorieta (Paddock)	
20. Rotary or C.T.		Rotary	
Elevations (Show whether D.F., K.T., etc.)		22. Approx. Date Work will start	
3988 GR		November 5, 1987	

PROPOSED CASING AND CEMENT PROGRAM

SIZE OF HOLE	SIZE OF CASING	WEIGHT PER FOOT	SETTING DEPTH	SACKS OF CEMENT	EST. TOP
28"	24"	133#	40'	Redimix	Surface
20"	16"	65#	400'	650	Circulate
15"	11-3/4"	42#	1550'	1300	Circulate
10-5/8"	8-5/8"	32#	4850'	1400	Circulate
7-7/8"	5-1/2"	15.5#	6290'	950	Circulate

CEMENTING PROGRAM

SURFACE CASING: 650 sacks Class "H" w/2% CaCl, 1/4# Flocele (15.6 ppg, 1.18 cu. ft./sx.).

1ST INTERMEDIATE CASING: 1300 sacks Class "H" w/2% CaCl, 1/4# Flocele (15.6 ppg, 1.18 cu. ft./sx.).

2ND INTERMEDIATE CASING: 1st Stage: 700 sacks Class "H" Light Weight w/15# Salt, 1/4# Flocele (12.7 ppg, 2.1 cu. ft./sx.) followed with 250 sacks Class "H" w/1/4# Flocele (15.6 ppg, 1.18 cu. ft./sx.)
2ND Stage: 450 sacks Class "H" (15.6 ppg, 1.18 cu. ft./sx.) DV Tool @ 1555', ECP @ 1560'.

PRODUCTION CASING: 1st Stage: 200 sacks Class "H" Light Weight, 1/4# Flocele (12.7 ppg, 1.84 cu. ft./sx.) followed w/200 sacks Class "H" cont.

ABOVE SPACE DESCRIBE PROPOSED PROGRAM: IF PROPOSAL IS TO DEEPEN OR PLUG BACK, GIVE DATA ON PRESENT PRODUCTIVE ZONE AND PROPOSED NEW PRODUCE ZONE. GIVE BLOWOUT PREVENTER PROGRAM, IF ANY.

I hereby certify that the information above is true and complete to the best of my knowledge and belief.

L. J. Seeman

Signed L. J. Seeman Title Dist. Petr. Engr. Date 10/27/87

(This space for State Use)

ORIGINAL SIGNED BY JERRY SEXTON

PROVED BY DISTRICT 1 SUPERVISOR TITLE DATE OCT 30 1987

CONDITIONS OF APPROVAL, IF ANY:

Permit Expires 6 Months From Approval
Date Unless Drilling Underway.

NEW MEXICO "O" STATE NCT-1 WELL NO. 27
VACUUM GLORIETA FIELD
LEA COUNTY, NEW MEXICO

Continuation to Form C-101

Cementing Program Continued:

PRODUCTION CASING:

1st Stage (Cont.): w/1/4# Flocele (15.6 ppg, 1.18 cu. ft./sx.).

2nd Stage: 550 sacks Class "H" Light Weight w/1/4# Flocele
(12.7 ppg, 1.84 cu. ft./sx.). DV Tool @ 5000'.

All other wells in this 1/4, 1/4 Section are operated by Texaco
Producing Inc.

NEW MEXICO OIL CONSERVATION COMMISSION
WELL LOCATION AND ACREAGE DEDICATION PLAT

Form C-102
Supersedes C-128
Effective 1-1-65

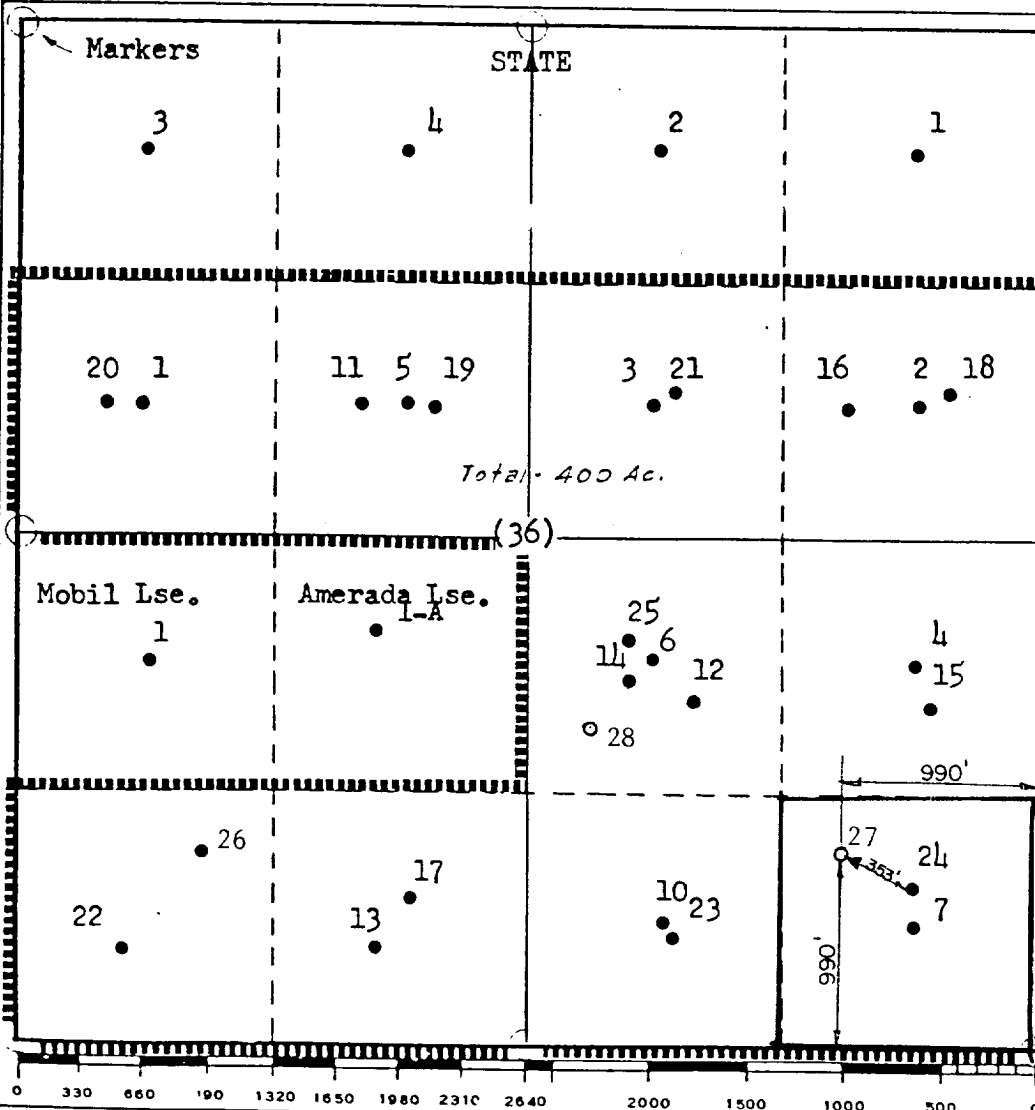
All distances must be from the outer boundaries of the Section.

Operator TEXACO PRODUCING INC.		Lease New Mexico "O" State NCT-1		Well No. 27
Unit Letter P	Section 36	Township 17 South	Range 34 East	County Lea
Actual Footage Location of Well: 990' feet from the South line and 990' feet from the East line Sec. 36				
Ground Level Elev. 3988'	Producing Formation GLorieta (Paddock)	Pool Vacuum Glorieta	Dedicated Acreage: 40 Acres	

- Outline the acreage dedicated to the subject well by colored pencil or hachure marks on the plat below.
- If more than one lease is dedicated to the well, outline each and identify the ownership thereof (both as to working interest and royalty).
- If more than one lease of different ownership is dedicated to the well, have the interests of all owners been consolidated by communitization, unitization, force-pooling, etc?
☐ Yes ☐ No If answer is "yes," type of consolidation _____

If answer is "no," list the owners and tract descriptions which have actually been consolidated. (Use reverse side of this form if necessary.) _____

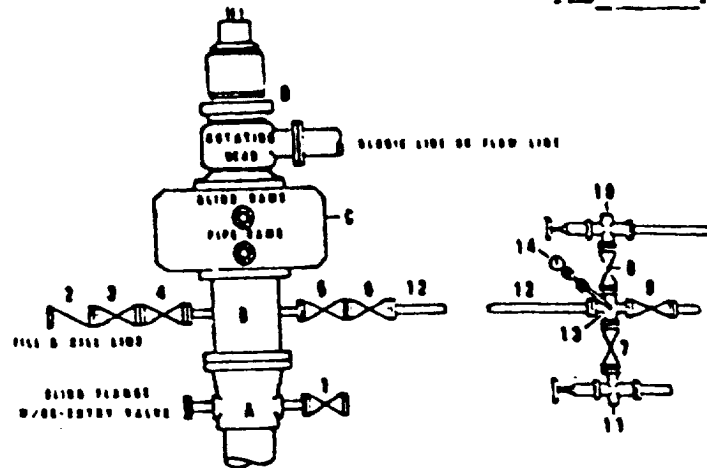
No allowable will be assigned to the well until all interests have been consolidated (by communitization, unitization, forced-pooling, or otherwise) or until a non-standard unit, eliminating such interests, has been approved by the Commission.



CERTIFICATION	
I hereby certify that the information contained herein is true and complete to the best of my knowledge and belief.	
Name	B.L. Eiland
Position	Division Surveyor
Company	Texaco Producing Inc.
Date	October 12, 1987
I hereby certify that the well location shown on this plat was plotted from field notes of actual surveys made by me or under my supervision, and that the same is true and correct to the best of my knowledge and belief.	
Date Surveyed	October 5, 1987
Registered Professional Engineer and/or Land Surveyor B.L. Eiland	
Certificate No.	4386

DRILLING CONTROL
CONDITION II-B 3000 WP
FOR AIR DRILLING OR
WHERE YATES AIR BLOWS ARE EXPECTED

H₂S TRIM REQUIRED
 YES _____ NO _____



DRILLING CONTROL

MATERIAL LIST - CONDITION II - B
FOR AIR DRILLING

- A Texaco Wellhead
- B 3000# W.P. drilling spool with a 2" minimum flanged outlet for kill-line and 3" minimum flanged outlet for choke line
- C 3000# W.P. Dual ram type preventer, hydraulic operated with 1" steel, 3000# W.P. control lines (where sub-structure height is adequate, 2-3000# W.P. single ram type preventers may be utilized.)
- D Rotating Head and extended Electric Line.
- 1,3,4, 7,8 2" minimum 3000# W.P. flanged full opening steel gate valve, or Halliburton Lo Torc Plug valve.
- 2 2" minimum 3000# W.P. back pressure valve
- 5,6,9 3" minimum 3000# W.P. flanged full opening steel gate valve, or Halliburton Lo Torc Plug valve.
- 12 3" minimum schedule 80, Grade "B", seamless line pipe
- 13 2" minimum x 3" minimum 3000# W.P. flanged cross
- 10, 11 2" minimum 3000# W.P. adjustable choke bodies
- 14 Cameron Mud Gauge or equivalent (location optional in choke line.)



TEXACO, INC.
 MIDLAND DIVISION
 MIDLAND, TEXAS



SCALE	DATE	EST. NO.	DWG. NO.
DRAWN BY			
CHECKED BY			
APPROVED BY			

EXHIBIT C