

NEW MEXICO OIL CONSERVATION COMMISSION  
WELL LOCATION AND ACREAGE DEDICATION PLAT

Form C-102  
Supersedes C-128  
Effective 1-1-65

All distances must be from the outer boundaries of the Section.

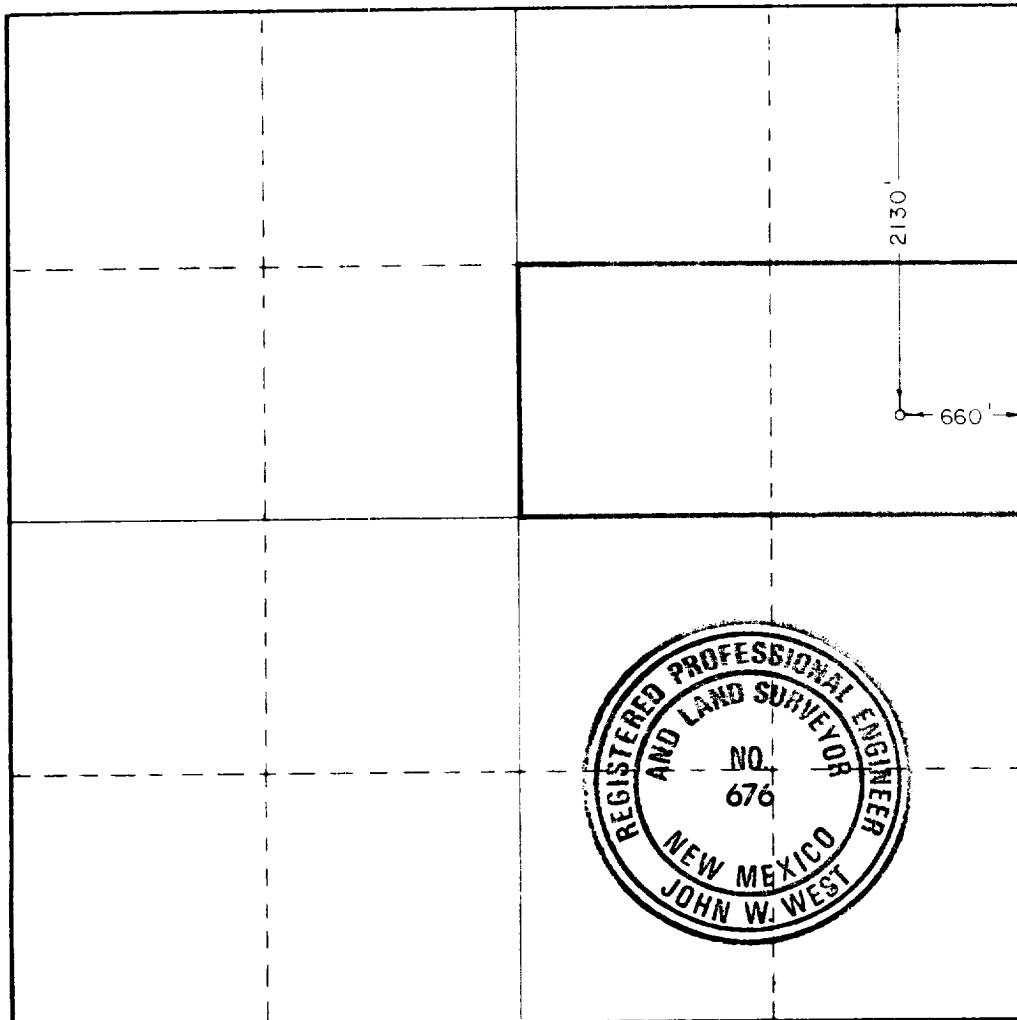
Operator Charles B. Gillespie, Jr.		Lease Shipp "DA"		Well No. 1
Tract Letter H	Section 10	Township 17 South	Range 37 East	County Lea County
Actual Footage Location of Well: 2130' feet from the North line and 660' feet from the East line				
Ground Level Elev. 3752.4	Producing Formation Strawn	Pool Humble City Strawn	Dedicated Acreage: 80 Acres	

1. Outline the acreage dedicated to the subject well by colored pencil or hachure marks on the plat below.
2. If more than one lease is dedicated to the well, outline each and identify the ownership thereof (both as to working interest and royalty).
3. If more than one lease of different ownership is dedicated to the well, have the interests of all owners been consolidated by communitization, unitization, force-pooling, etc?

☐ Yes ☐ No If answer is "yes," type of consolidation \_\_\_\_\_

If answer is "no," list the owners and tract descriptions which have actually been consolidated. (Use reverse side of this form if necessary.) \_\_\_\_\_

No allowable will be assigned to the well until all interests have been consolidated (by communitization, unitization, forced-pooling, or otherwise) or until a non-standard unit, eliminating such interests, has been approved by the Commission.



CERTIFICATION

I hereby certify that the information contained herein is true and complete to the best of my knowledge and belief.

Name  
David Hastings

Position  
Production Manager

Company  
Charles B. Gillespie, Jr.

Date  
11/02/87

I hereby certify that the well location shown on this plat was plotted from field notes of actual surveys made by me or under my supervision, and that the same is true and correct to the best of my knowledge and belief.

Date Surveyed  
October 30, 1987

Registered Professional Engineer  
and/or Land Surveyor

Certificate No. JOHN W. WEST, 676  
RONALD J. EIDSON, 3239

RECEIVED  
NOV 3 1987  
OCD  
HOBBS OFFICE

ELF

Rec 1-2288