

Submit to Appropriate
District Office
State Lease - 4 copies
Fee Lease - 3 copies

State of New Mexico
Energy, Minerals and Natural Resources Department

Form C-102
Revised 1-1-89

OIL CONSERVATION DIVISION

P.O. Box 2088
Santa Fe, New Mexico 87504-2088

DISTRICT I
P.O. Box 1980, Hobbs, NM 88240

DISTRICT II
P.O. Drawer DD, Artesia, NM 88210

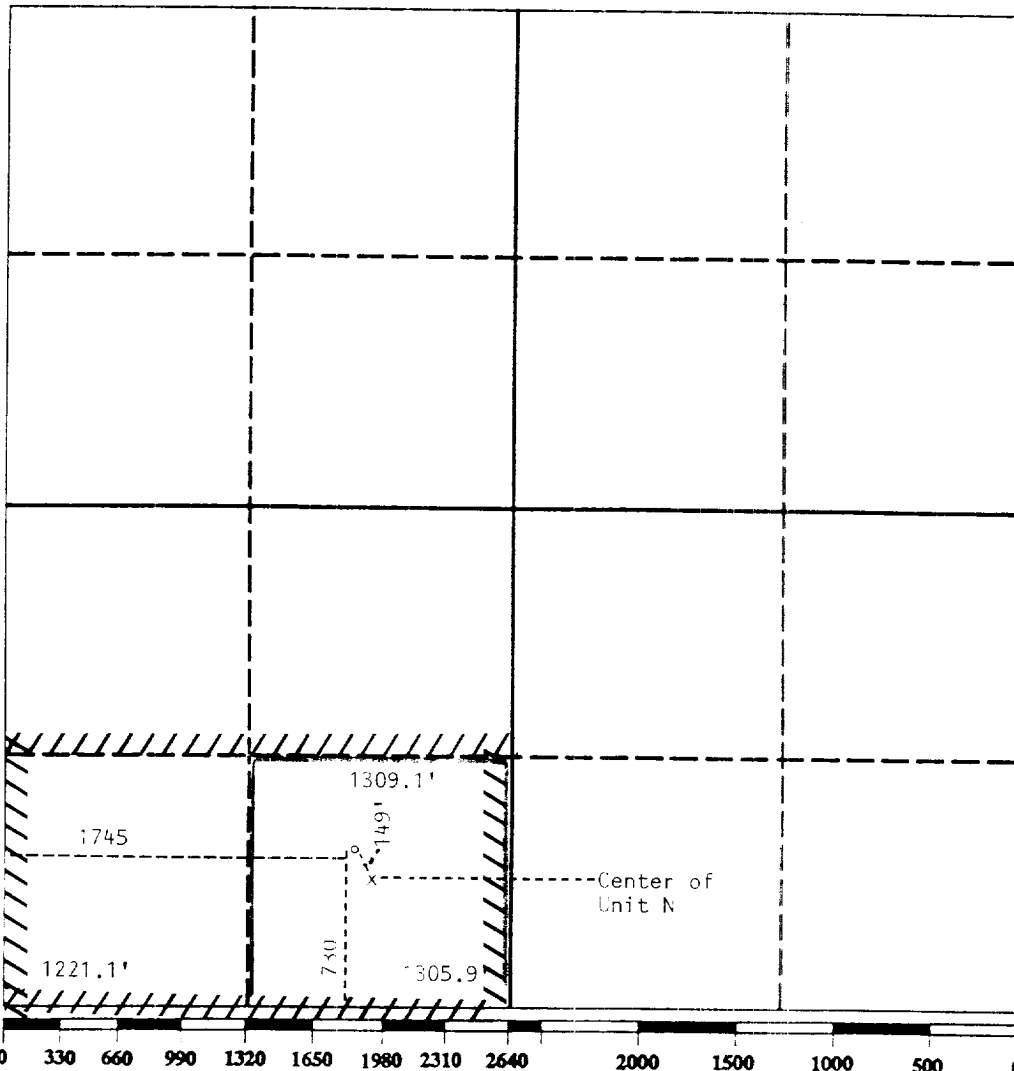
DISTRICT III
1000 Rio Brazos Rd., Aztec, NM 87410

WELL LOCATION AND ACREAGE DEDICATION PLAT

Mobil Producing TX & N.M. Inc. All Distances must be from the outer boundaries of the section

Operator Mobil Producing Tx. & N. M. Inc.			Lease Lovington Deep Amoco State		Well No. 3
Unit Letter N	Section 6	Township 17South	Range 36East	County Lea	
Actual Footage Location of Well: 1745 feet from the West line and 730 feet from the South line					
Ground level Elev. 3917	Producing Formation Wolfcamp	Pool South Shoe Bar Undesignated		Dedicated Acreage: 76.8 40 Acres	

1. Outline the acreage dedicated to the subject well by colored pencil or hatchure marks on the plat below.
2. If more than one lease is dedicated to the well, outline each and identify the ownership thereof (both as to working interest and royalty).
3. If more than one lease of different ownership is dedicated to the well, have the interest of all owners been consolidated by communitization, unitization, force-pooling, etc.?
☐ Yes ☐ No If answer is "yes" type of consolidation _____
If answer is "no" list the owners and tract descriptions which have actually been consolidated. (Use reverse side of this form if necessary.)
No allowable will be assigned to the well until all interests have been consolidated (by communitization, unitization, forced-pooling, or otherwise) or until a non-standard unit, eliminating such interest, has been approved by the Division.



OPERATOR CERTIFICATION

I hereby certify that the information contained herein is true and complete to the best of my knowledge and belief.

Signature
Judy Dixon

Printed Name

Position
Environmental & Regulatory

Company
Mobil Producing Texas & New Mexico Inc.
acting by and through its agent
Mobil Exploration & Producing U.S. Inc.

Date
3/1/91

SURVEYOR CERTIFICATION

I hereby certify that the well location shown on this plat was plotted from field notes of actual surveys made by me or under my supervision, and that the same is true and correct to the best of my knowledge and belief.

Date Surveyed

Signature & Seal of
Professional Surveyor

Certificate No.

Yates	Kriti	Expl	Exxon	H. E. Yates
36			31	32
Mobil	Amoco (Mobil)		Mobil	6 5 Turner
	80 Ac			
	80 Ac			
	80 Ac	Texaco		Texaco
	76.8 Ac			
	1745'			
	750'			
	Lovington Deep Amoco State	State		
Mobil	12	Texaco	7	8 Texaco

Reserve _____ Permit Depth _____

Special Instructions _____

THE STATE OF TEXAS
COUNTY OF Midland

I hereby certify that this plat truly represents conditions as they actually exist on this lease; that said plat which is drawn to the scale indicated hereon, is to the best of my knowledge true and correct; that it accurately shows said lease with all wells on same; that number and locations of said wells are as indicated hereon; and that this plat correctly reflects all pertinent and required data.

Mobil Producing Texas & New Mexico Inc. Midland Division

LEASE Lovington Deep Amoco State

WELL NO. _____ DATE _____ 19__

LEASE NO. _____

TOTAL ACRES IN LEASE 309.85 ACRES COVERED BY PLAT 309.85

DESCRIPTION West 2/3 of Section 6, T-17-S, R-36-E

6 miles SW from Lovington, N.M.

Los Comas, New Mexico

DRAWN A.L.W. CHECKED [Signature] BY South Star, Inc.

SCALE 1" = 400' DATE 10-1-59 *Wolfcamp