

MEXICO OIL CONSERVATION COMMISSION
WELL LOCATION AND ACREAGE DEDICATION PLAT

Form C-102
 Supersedes C-128
 Effective 1-1-65

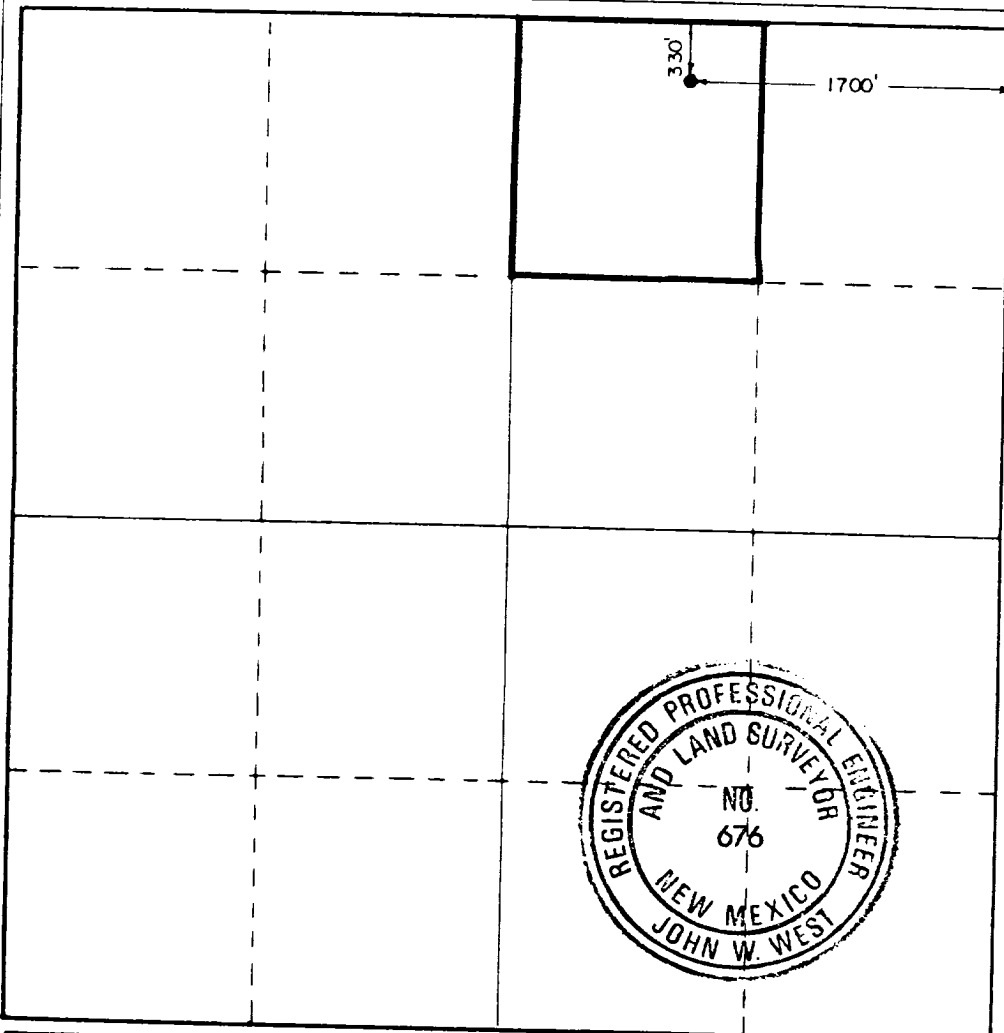
All distances must be from the outer boundaries of the Section

Operator: Sun Exploration & Production Co.				Lease: Kirk		Well No.: 1	
Tract Letter: B	Section: 20	Township: 17 South	Range: 38 East	County: Lea			
Actual Well Location of Well: 1700 feet from the East line and 330 feet from the North line							
Ground Level Elev.: 3694.0	Producing Formation: Strawn or Atoka		Pool: Wildcat		Dedicated Acreage: 40 Acres		

1. Outline the acreage dedicated to the subject well by colored pencil or hatchure marks on the plat below.
2. If more than one lease is dedicated to the well, outline each and identify the ownership thereof (both as to working interest and royalty).
3. If more than one lease of different ownership is dedicated to the well, have the interests of all owners been consolidated by communitization, unitization, force-pooling, etc?

☐ Yes ☐ No If answer is "yes," type of consolidation Fee (Privately Owned)
 If answer is "no," list the owners and tract descriptions which have actually been consolidated. (Use reverse side of this form if necessary.) _____

No allowable will be assigned to the well until all interests have been consolidated (by communitization, unitization, forced-pooling, or otherwise) or until a non-standard unit, eliminating such interests, has been approved by the Commission.



CERTIFICATION

I hereby certify that the information contained herein is true and complete to the best of my knowledge and belief.

Alva Franco

Name

Alva Franco

Position

Associate Accountant

Company

Sun Expl. & Prod. Co.

Date

11/16/87

I hereby certify that the well location shown on this plat was plotted from field notes of actual surveys made by me or under my supervision, and that the same is true and correct to the best of my knowledge and belief.

Date Surveyed

November 6, 1987

Registered Professional Engineer and/or Land Surveyor

John W. West

Certificate No. **JOHN W. WEST, 676**

RONALD J. EIDSON, 3239