

1 MEXICO OIL CONSERVATION COMMISS WELL LOCATION AND ACREAGE DEDICATION PLAT

Form C-102
Supersedes C-128
Effective 1-1-68

All distances must be from the outer boundaries of the Section

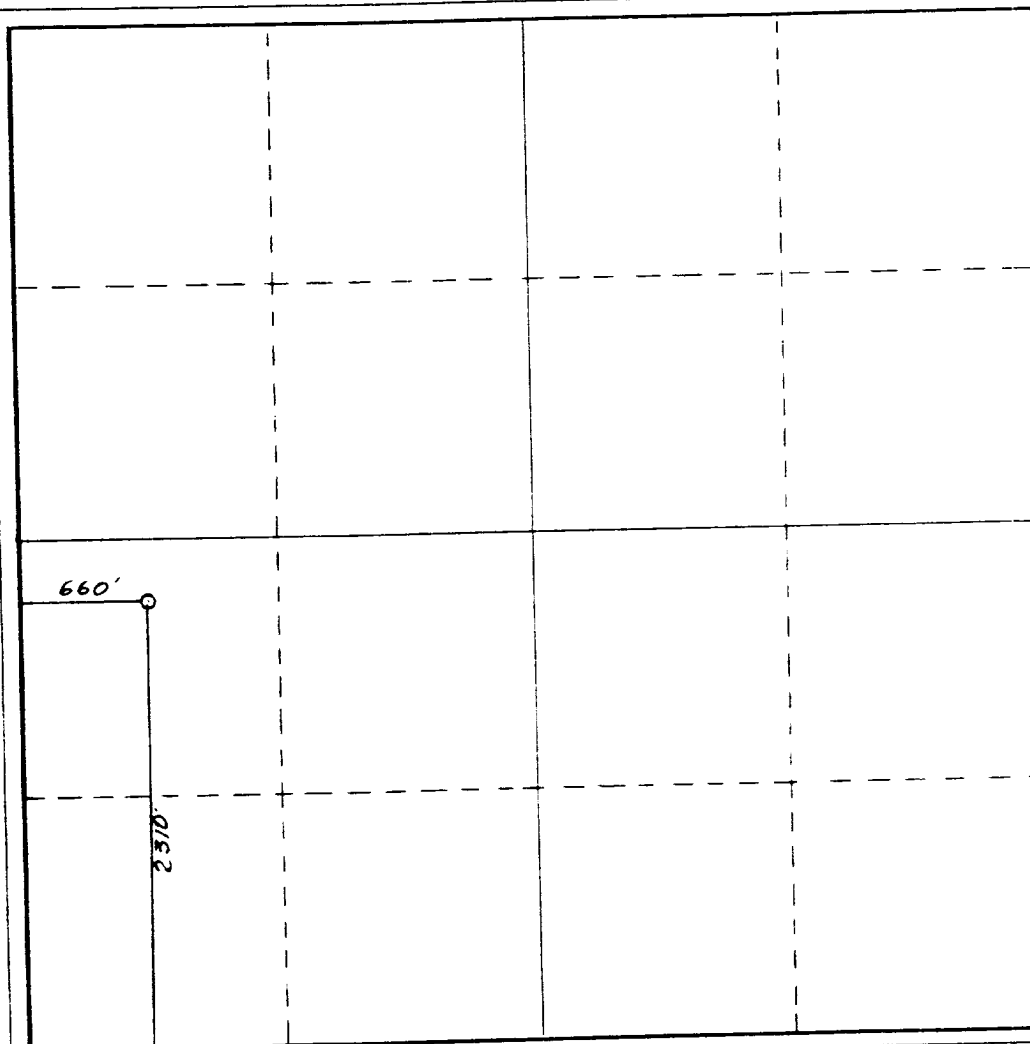
| | | | | | |
|-------------------------------------------------------------------------------------------------------------------------------|----------------------------------------|-----------------------------|--------------------------------------|-----------------------------------|-----------------------------------|
| Operator SIETE OIL & GAS CORPORATION | | | Lease Conoco Federal | | Well No. 3 |
| Unit Letter L | Section 19 | Township 18 South | Range 32 East | County Lea County, N.M. | |
| Actual Portage Location of Well: 2310 feet from the South line and 660 feet from the West line | | | | | |
| Ground Level Elev. 3716. | Producing Formation Delaware | | Pool E. Shugart - Delaware | | Dedicated Acreage 40 A. |

1. Outline the acreage dedicated to the subject well by colored pencil or hatchure marks on the plat below.
2. If more than one lease is dedicated to the well, outline each and identify the ownership thereof (both as to working interest and royalty).
3. If more than one lease of different ownership is dedicated to the well, have the interests of all owners been consolidated by communitization, unitization, force-pooling, etc?

☐ Yes ☐ No If answer is "yes," type of consolidation _____

If answer is "no," list the owners and tract descriptions which have actually been consolidated. (Use reverse side of this form if necessary.) _____

No allowable will be assigned to the well until all interests have been consolidated (by communitization, unitization, forced-pooling, or otherwise) or until a non-standard unit, eliminating such interests, has been approved by the Commission.



CERTIFICATION

I hereby certify that the information contained herein is true and complete to the best of my knowledge and belief.

D. P. Drilling & Production
Name

V. P. Drilling & Production

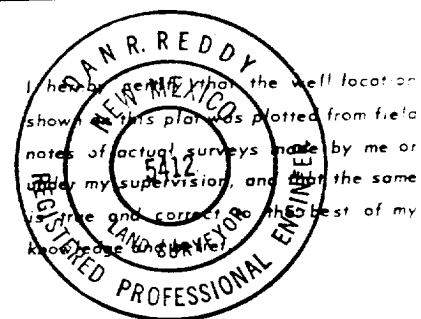
Position

Siete Oil & Gas Corporation

Company

December 4, 1987

Date



Date Surveyed

December 1, 1987

Registered Professional Engineer
and/or Land Surveyor

Dan R. Reddy
Certificate No.

NM PE&LS NO. 5412

0 330 660 990 1320 1650 1980 2310 2640 2000 1500 1000 500 C