

OIL CONSERVATION DIVISION

STATE OF NEW MEXICO
ENERGY AND MINERALS DEPARTMENTP. O. BOX 2088
SANTA FE, NEW MEXICO 87501Form C-102
Revised 10-1-78

All distances must be from the outer boundaries of the Section.

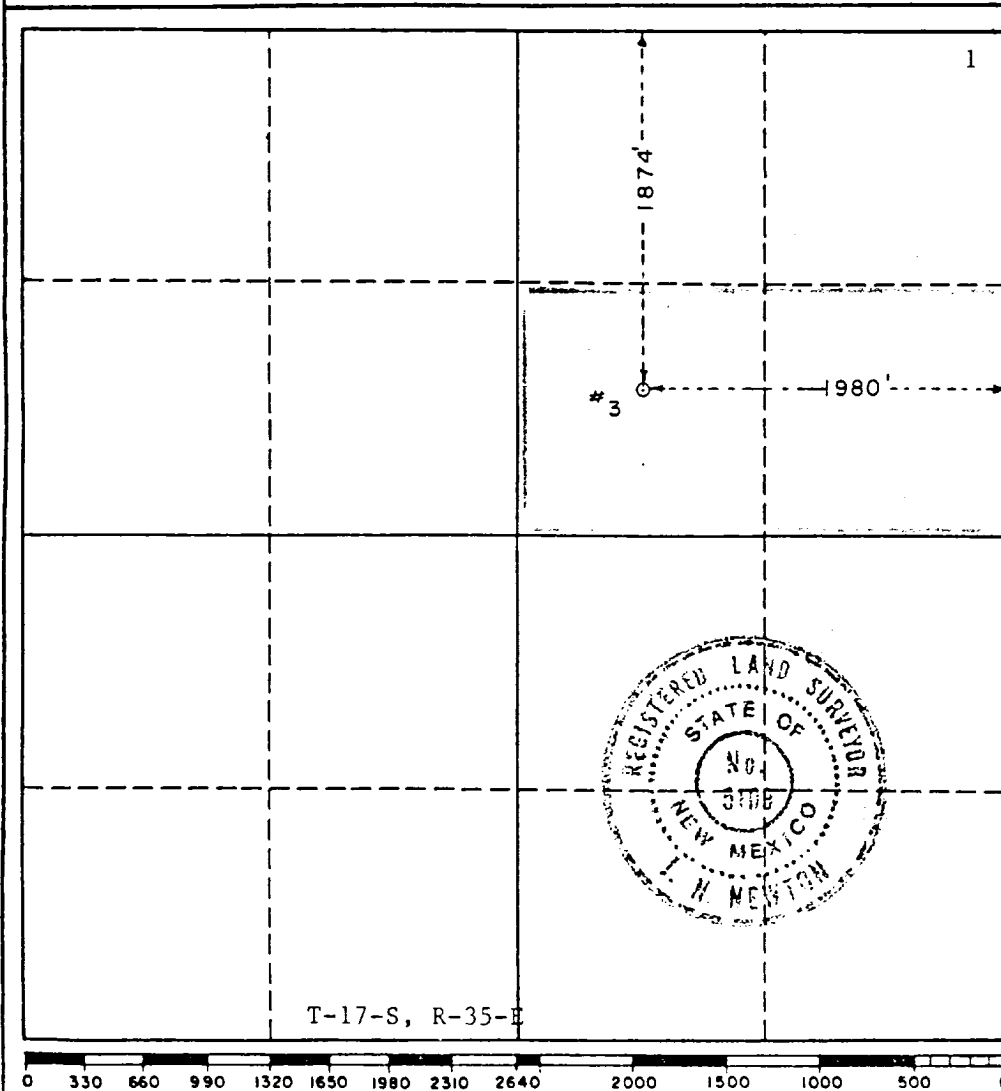
Operator MOBIL EXPLORATION AND PRODUCING U.S.		Lease LOVINGTON DEEP STATE		Well No. 3
Unit Letter G	Section 1	Township 17-S	Range 35-E	County LEA
Actual Footage Location of Well: 1874 feet from the North line and 1980 feet from the East line				
Ground Level Elev. 3931 feet	Producing Formation Upper Penn	Pool South Shore Pool Undesignated	Dedicated Acreage: 80 Acres	

1. Outline the acreage dedicated to the subject well by colored pencil or hachure marks on the plat below.
2. If more than one lease is dedicated to the well, outline each and identify the ownership thereof (both as to working interest and royalty).
3. If more than one lease of different ownership is dedicated to the well, have the interests of all owners been consolidated by communitization, unitization, force-pooling, etc?

☐ Yes ☐ No If answer is "yes," type of consolidation _____

If answer is "no," list the owners and tract descriptions which have actually been consolidated. (Use reverse side of this form if necessary.) _____

No allowable will be assigned to the well until all interests have been consolidated (by communitization, unitization, forced-pooling, or otherwise) or until a non-standard unit, eliminating such interests, has been approved by the Division.



CERTIFICATION

I hereby certify that the information contained herein is true and complete to the best of my knowledge and belief.

M.E. Sweeney M.E. Sweeney

Name
Manager,
Environmental & Regulatory

Position
Mobil Producing Texas & New Mexico, Inc.
acting by and through its agent

Company
Mobil Exploration & Producing U.S., Inc.

Date
February 9, 1988

I hereby certify that the well location shown on this plat was plotted from field notes of actual surveys made by me or under my supervision, and that the same is true and correct to the best of my knowledge and belief.

Date Surveyed
January 8, 1988

Registered Professional Engineer
and/or Land Surveyor

Certificate No.

5109

APR 11 1983
MAR 29 1983
OCD
ACCESS OFFICE