

**MEXICO OIL CONSERVATION COMMISSION**  
**WELL LOCATION AND ACREAGE DEDICATION PLAT**

Form C-102  
 Supersedes C-128  
 Effective 1-1-85

All distances must be from the outer boundaries of the Section

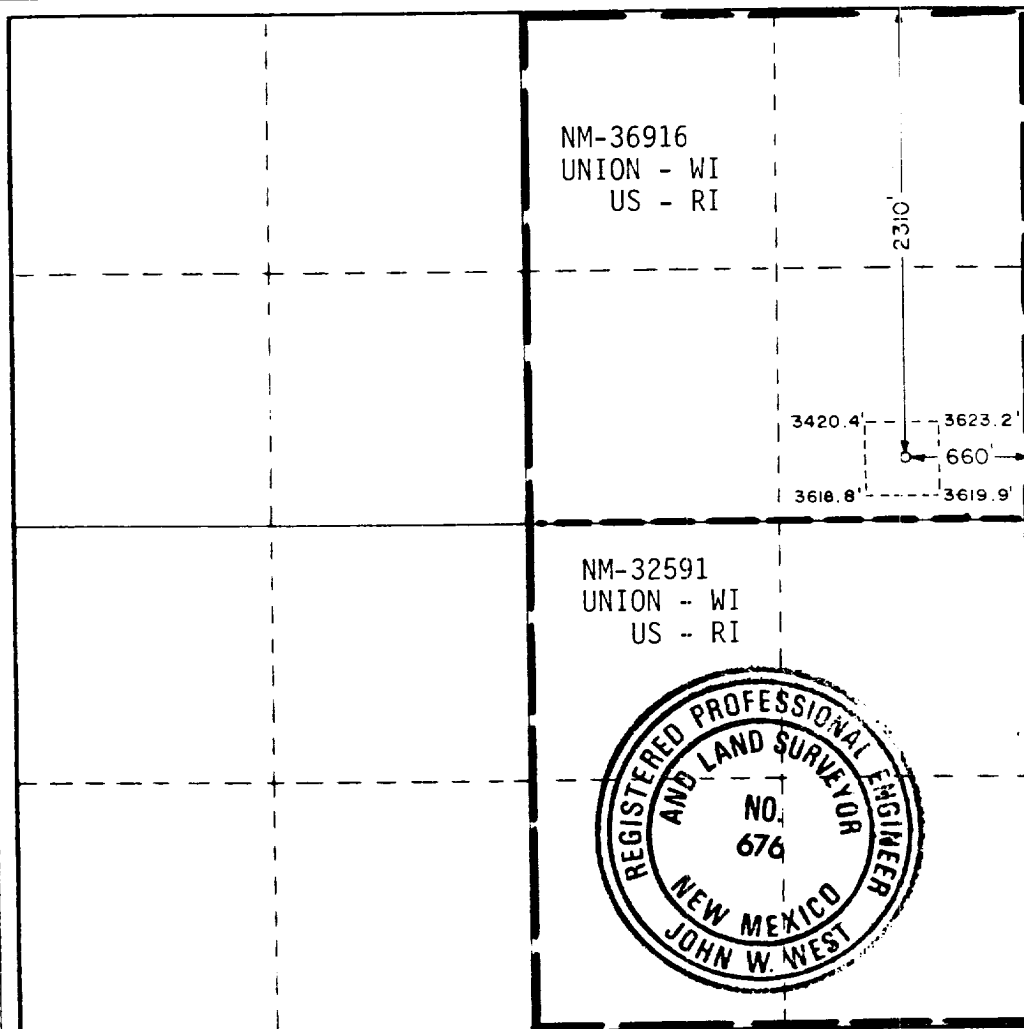
Operator <b>UNION OIL CO. OF CALIFORNIA</b>			Lease <b>NORTH MADURO FEDERAL UNIT</b>		Well No. <b>1</b>
Tract Letter <b>H</b>	Section <b>20</b>	Township <b>19 SOUTH</b>	Range <b>33 EAST</b>	County <b>LEA</b>	
Actual Footage Location of Well: <b>2310</b> feet from the <b>NORTH</b> line and <b>660</b> feet from the <b>EAST</b> line					
Ground Level Elev. <b>3620.6</b>	Producing Formation <b>MORROW</b>		Pool <b>GEM MORROW GAS</b>		Dedicated Acreage: <b>320</b> Acres

1. Outline the acreage dedicated to the subject well by colored pencil or hachure marks on the plat below.
2. If more than one lease is dedicated to the well, outline each and identify the ownership thereof (both as to working interest and royalty).
3. If more than one lease of different ownership is dedicated to the well, have the interests of all owners been consolidated by communitization, unitization, force-pooling, etc?

☐ Yes ☒ No If answer is "yes," type of consolidation TO BE UNITIZED

If answer is "no," list the owners and tract descriptions which have actually been consolidated. (Use reverse side of this form if necessary.) \_\_\_\_\_

No allowable will be assigned to the well until all interests have been consolidated (by communitization, unitization, forced-pooling, or otherwise) or until a non-standard unit, eliminating such interests, has been approved by the Commission.



**CERTIFICATION**

I hereby certify that the information contained herein is true and complete to the best of my knowledge and belief.

Name Arthur R. Brown  
 Position Agent  
 Company UNION OIL COMPANY OF CALIF.  
 Date JANUARY 25, 1988

I hereby certify that the well location shown on this plat was plotted from field notes of actual surveys made by me or under my supervision, and that the same is true and correct to the best of my knowledge and belief.

Date Surveyed January 14, 1988  
 Registered Professional Engineer and/or Land Surveyor John W. West  
 Certificate No. JOHN W. WEST, 676  
RONALD J. EIDSON, 3239

RECEIVED

FEB 29 1988  
C-20  
HOBBS OFFICE