

NEW MEXICO OIL CONSERVATION COMMISSION
WELL LOCATION AND ACREAGE DEDICATION PLAT

Form C-102
Supersedes C-128
Effective 1-1-85

All distances must be from the outer boundaries of the Section

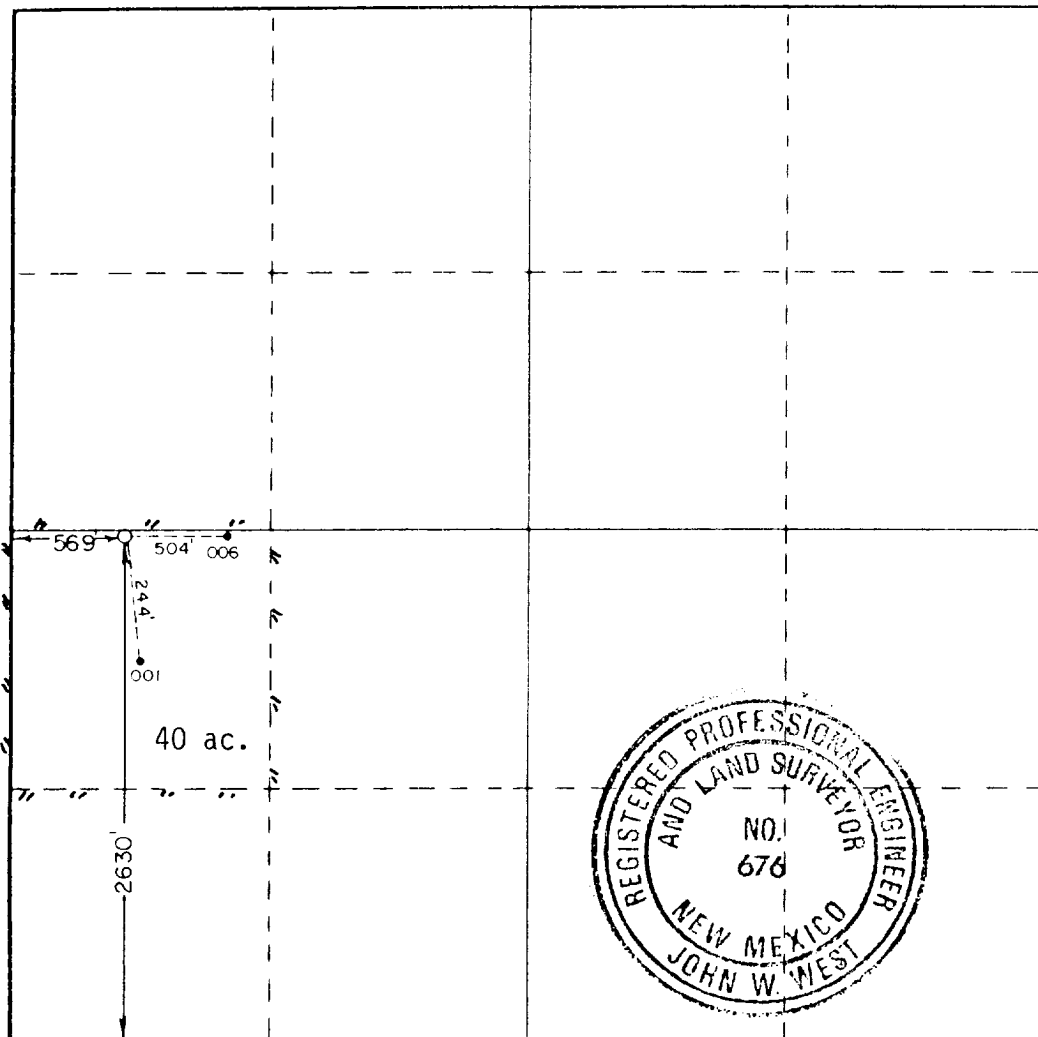
Operator Phillips Petroleum Co.		Lease E.V.G.S.A.U.		Well No. 3229-012
Tract Letter L	Section 32	Township 17 South	Range 35 East	County Lea
Actual Portage Location of Well: 2630 feet from the South line and 569 feet from the West line				
Ground Level Elev. 3969.6	Producing Formation Grayburg San Andres	Pool Vacuum	Dedicated Acreage 40 Acres	

1. Outline the acreage dedicated to the subject well by colored pencil or hatchure marks on the plat below.
2. If more than one lease is dedicated to the well, outline each and identify the ownership thereof (both as to working interest and royalty).
3. If more than one lease of different ownership is dedicated to the well, have the interests of all owners been consolidated by communitization, unitization, force-pooling, etc?

☒ Yes ☐ No If answer is "yes," type of consolidation Unitization

If answer is "no," list the owners and tract descriptions which have actually been consolidated. (Use reverse side of this form if necessary.)

No allowable will be assigned to the well until all interests have been consolidated (by communitization, unitization, forced-pooling, or otherwise) or until a non-standard unit, eliminating such interests, has been approved by the Commission.



CERTIFICATION

I hereby certify that the information contained herein is true and complete to the best of my knowledge and belief.

W. J. Mueller

Eng. Supervisor, Reservoir

Phillips Petroleum Co.

11/27/88

I hereby certify that the well location shown on this plat was plotted from field notes of actual surveys made by me or under my supervision, and that the same is true and correct to the best of my knowledge and belief.

Date Surveyed

December 23, 1987

Registered Professional Engineer and/or Land Surveyor

RONALD J. EIDSON

Certificate No. JOHN W. WEST, 676

RONALD J. EIDSON, 3239