

**NEW MEXICO OIL CONSERVATION COMMISSION
WELL LOCATION AND ACREAGE DEDICATION PLAT**

Form C-102
Supersedes C-128
Effective 1-1-65

All distances must be from the outer boundaries of the Section

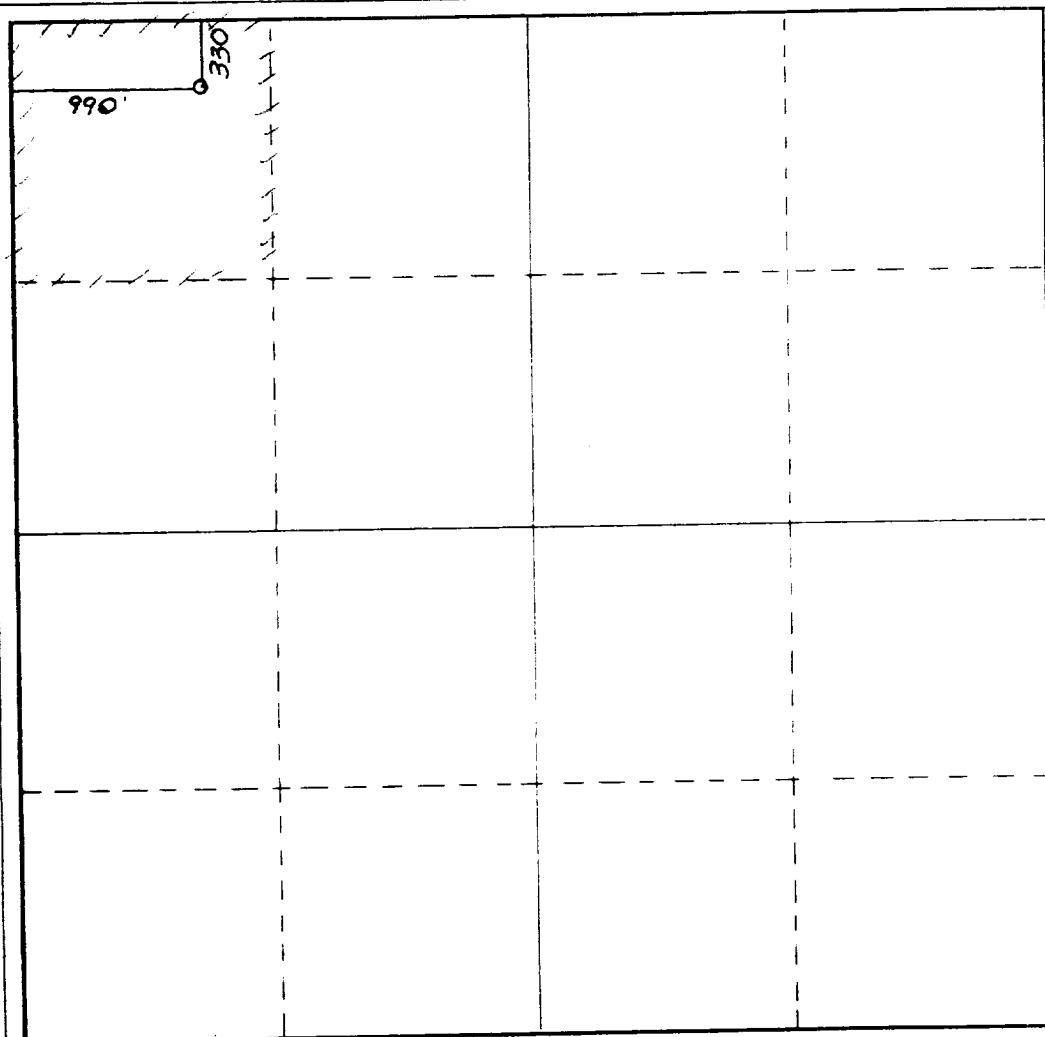
Operator SIETE OIL & GAS CORPORATION			Lease Inca Federal		Well No. 9
Unit Letter D	Section 17	Township 18 South	Range 32 East	County Lea County, N.M.	
Actual Footage Location of Well: <div style="display: flex; justify-content: space-between;"> 330 feet from the North line and 990 feet from the West line </div>					
Ground Level Elev. 3760.	Producing Formation Bone Spring		Pool N Young Bone Spring		Dedicated Acreage 40 Acres

1. Outline the acreage dedicated to the subject well by colored pencil or hatchure marks on the plat below.
2. If more than one lease is dedicated to the well, outline each and identify the ownership thereof (both as to working interest and royalty).
3. If more than one lease of different ownership is dedicated to the well, have the interests of all owners been consolidated by communitization, unitization, force-pooling, etc?

☐ Yes ☐ No If answer is "yes," type of consolidation _____

If answer is "no," list the owners and tract descriptions which have actually been consolidated. (Use reverse side of this form if necessary.) _____

No allowable will be assigned to the well until all interests have been consolidated (by communitization, unitization, forced-pooling, or otherwise) or until a non-standard unit, eliminating such interests, has been approved by the Commission.



CERTIFICATION

I hereby certify that the information contained herein is true and complete to the best of my knowledge and belief

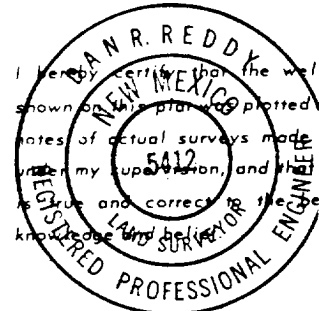
Harold D. Justice
Name
Harold D. Justice

Position
V.P. Drilling & Production

Company
Siete Oil & Gas Corporation

Date
August 19, 1988

I hereby certify that the well location shown on this plat was plotted from field notes of actual surveys made by me or under my supervision, and that the same are true and correct to the best of my knowledge and belief.

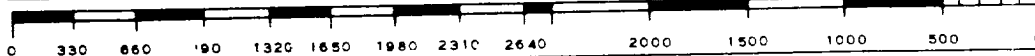


Date Surveyed
August 16, 1988

Registered Professional Engineer
and/or Land Surveyor

Dan R. Reddy
Certificate No.

NM PE&LS NO. 5412



RECEIVED

SEP 14 1989

OCD
HQBBS OFFICE