

MEXICO OIL CONSERVATION COMMISSION
WELL LOCATION AND ACREAGE DEDICATION PLAT

Form C-107
 Supersedes C-128
 Effective 1-1-65

All distances must be from the outer boundaries of the Section

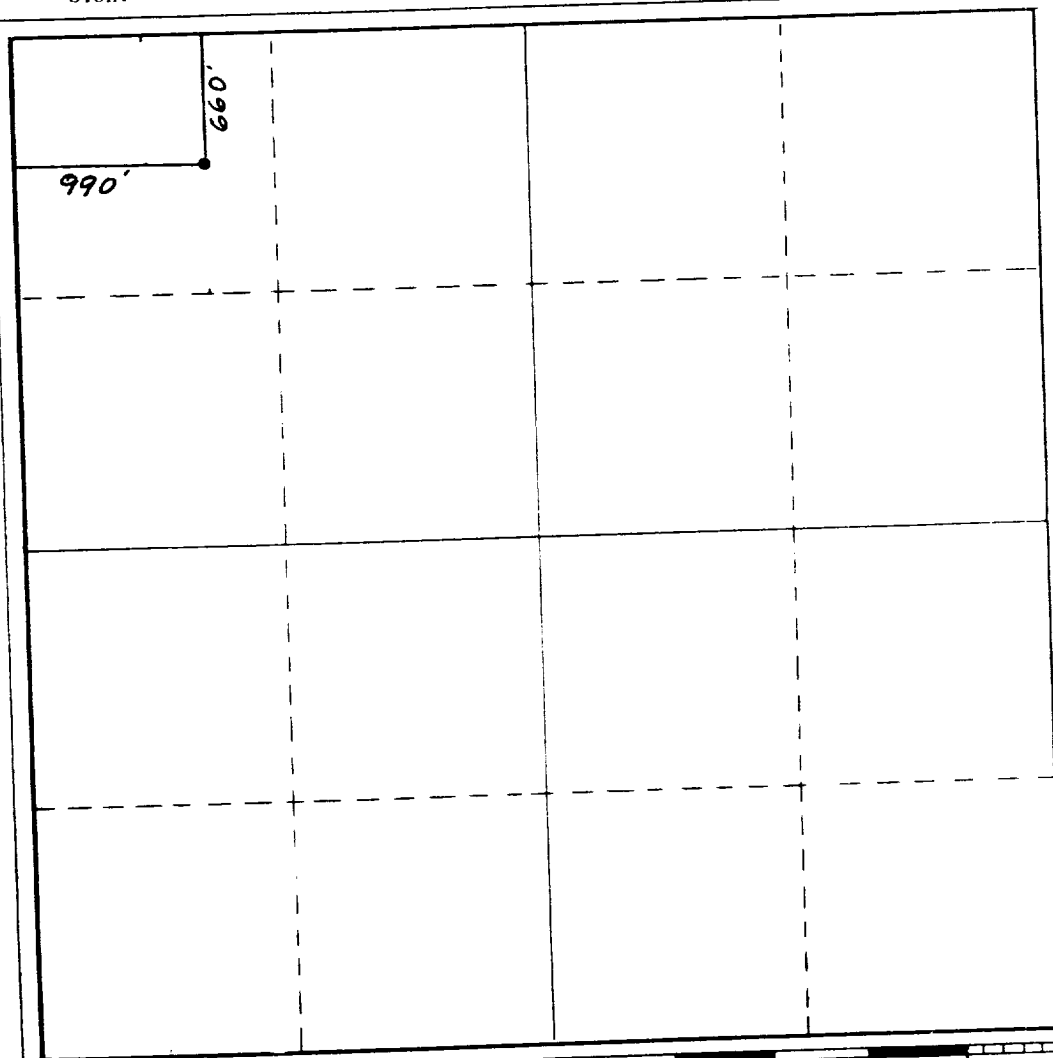
Operator SIETE OIL & GAS CORPORATION			Lease Inca Federal		Well No. 9
Tract Letter D	Section 17	Township 18 South	Range 32 East	County Lea County, N.M.	
Actual Footage Location of Well: 990 feet from the West line and 660 feet from the North line					
Ground Level Elev. 3761.	Producing Formation Bone Spring		Pool Young Bone Spring North	Estimated Acreage 40	

1. Outline the acreage dedicated to the subject well by colored pencil or hachure marks on the plat below.
2. If more than one lease is dedicated to the well, outline each and identify the ownership thereof (both as to working interest and royalty).
3. If more than one lease of different ownership is dedicated to the well, have the interests of all owners been consolidated by communitization, unitization, force-pooling, etc?

☐ Yes ☐ No If answer is "yes," type of consolidation _____

If answer is "no," list the owners and tract descriptions which have actually been consolidated. (Use reverse side of this form if necessary.) _____

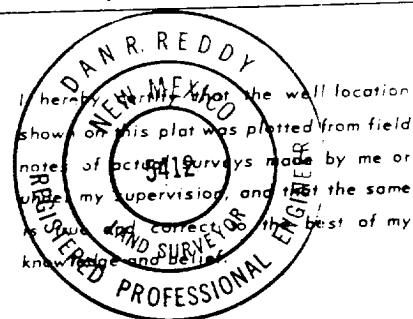
No allowable will be assigned to the well until all interests have been consolidated (by communitization, unitization, forced-pooling, or otherwise) or until a non-standard unit, eliminating such interests, has been approved by the Commission.



CERTIFICATION

I hereby certify that the information contained herein is true and complete to the best of my knowledge and belief.

Name H. D. Justice
 Position V.P. Drilling & Production
 Company Siete Oil & Gas Corporation
 Date February 8, 1988



Date Surveyed
February 3, 1988
 Registered Professional Engineer
 and/or Land Surveyor

Dan R. Reddy
 Certificate No.
NM PE&LS NO. 5412

