

N. MEXICO OIL CONSERVATION COMMISSION
WELL LOCATION AND ACREAGE DEDICATION PLAT

Form C-122
 Supersedes C-128
 Effective 1-1-65

All distances must be from the outer boundaries of the Section

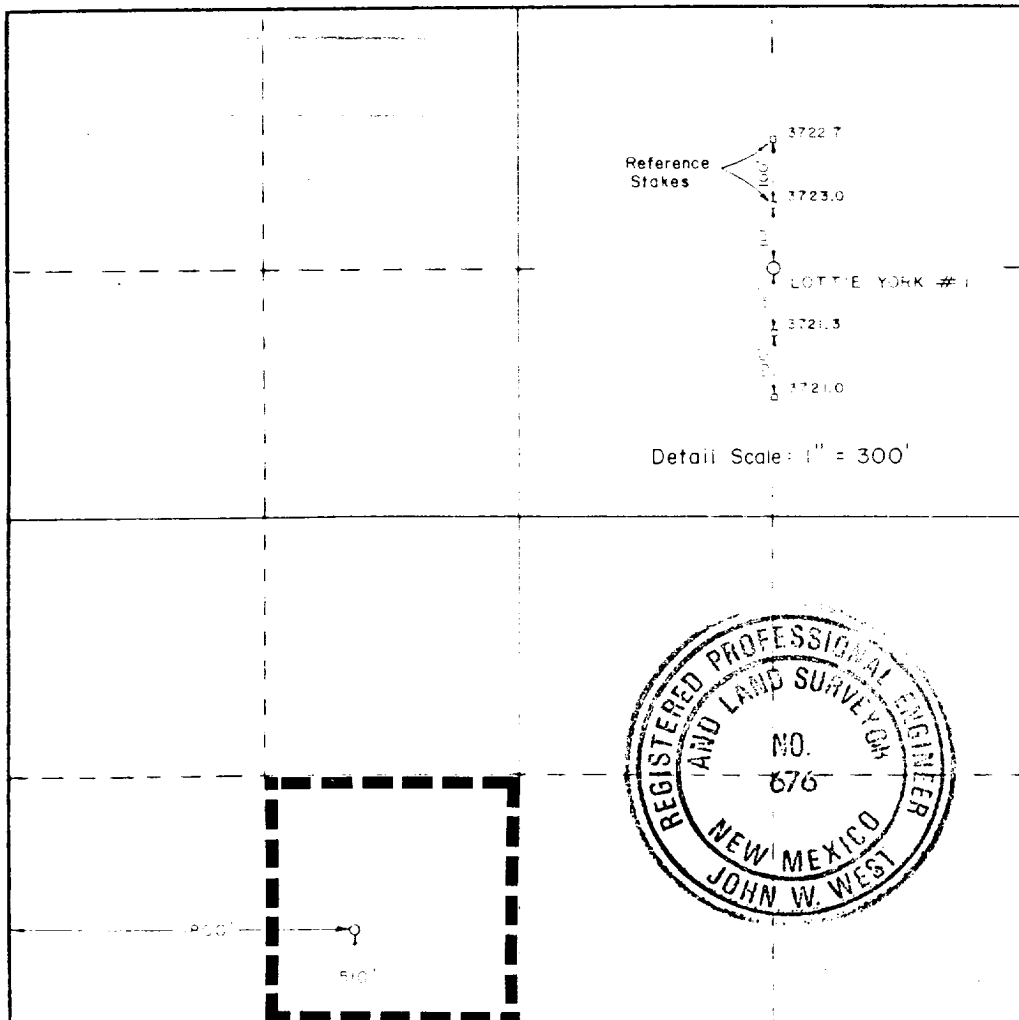
Operator Sun Exploration & Producing Co.			Lease Lottie York "23"		Well No. 1
Tract Letter N	Section 23	Township 17 South	Range 17 East	County Lea	
Actual Footage Location of Well: 510 feet from the South line and 1800 feet from the West line					
Ground Level Elev. 3721.3	Producing Formation Strawn	Pool Wildcat	Dedicated Acreage: 40 Acres		

1. Outline the acreage dedicated to the subject well by colored pencil or hachure marks on the plat below.
2. If more than one lease is dedicated to the well, outline each and identify the ownership thereof (both as to working interest and royalty).
3. If more than one lease of different ownership is dedicated to the well, have the interests of all owners been consolidated by communitization, unitization, force-pooling, etc?

☐ Yes ☐ No If answer is "yes," type of consolidation **FI from Inexco etal**

If answer is "no," list the owners and tract descriptions which have actually been consolidated. (Use reverse side of this form if necessary.) _____

No allowable will be assigned to the well until all interests have been consolidated (by communitization, unitization, forced-pooling, or otherwise) or until a non-standard unit, eliminating such interests, has been approved by the Commission.



CERTIFICATION

I hereby certify that the information contained herein is true and complete to the best of my knowledge and belief

Maria L. Perez
 Name
Maria L. Perez

Position
Accounting Associate

Company
Sun Expl. & Prod. Co.

Date
3-16-88

I hereby certify that the well location shown on this plat was plotted from field notes of actual surveys made by me or under my supervision, and that the same is true and correct to the best of my knowledge and belief.

Date Surveyed

Surveyed by

Registered Professional Engineer
 and Land Surveyor

John W. West

Certificate No. **JOHN W. WEST, 676**
RONALD J. EIDSON, 3239

90560

88-22-88

ELF

RECEIVED

MAR 17 1988

OCD
HOBBS OFFICE