

NEW MEXICO OIL CONSERVATION COMMISSION  
WELL LOCATION AND ACREAGE DEDICATION PLAT

Form C-102  
Supersedes C-128  
Effective 1-1-65

All distances must be from the outer boundaries of the Section

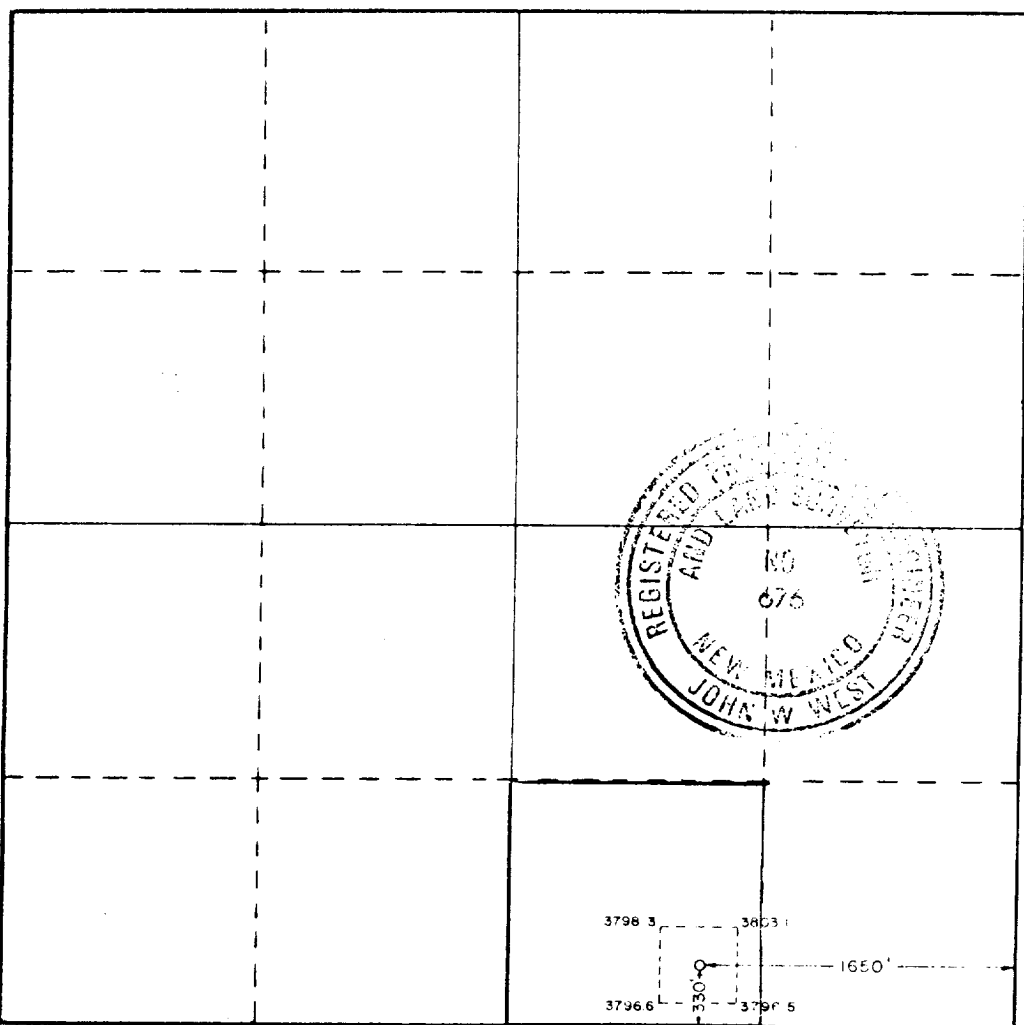
Operator Santa Fe Energy Operating Partners L.P.			Lease Schinnery 1- Fed.		Well No. 1
Unit Letter 0	Section 14	Township 18 South	Range 32 East	County Lea	
Actual Footage Location of Well: 330 feet from the south line and 1650 feet from the east line					
Ground Level Elev. 3798.7	Producing Formation BONE SPRING		Pool Quechero Plains	Dedicated Acreage 40 Acres	

1. Outline the acreage dedicated to the subject well by colored pencil or hachure marks on the plat below.
2. If more than one lease is dedicated to the well, outline each and identify the ownership thereof (both as to working interest and royalty).
3. If more than one lease of different ownership is dedicated to the well, have the interests of all owners been consolidated by communitization, unitization, force-pooling, etc?

☐ Yes ☐ No If answer is "yes," type of consolidation ONE Lease

If answer is "no," list the owners and tract descriptions which have actually been consolidated. (Use reverse side of this form if necessary.)

No allowable will be assigned to the well until all interests have been consolidated (by communitization, unitization, forced-pooling, or otherwise) or until a non-standard unit, eliminating such interests, has been approved by the Commission.



CERTIFICATION

I hereby certify that the information contained herein is true and complete to the best of my knowledge and belief.

Name  
Michael R. Banton  
Position  
Dist. Dir. Eng. Neer  
Company  
Santa Fe Energy Oper. Partners, LP  
Date  
8-24-88

I hereby certify that the well location shown on this plat was plotted from field notes of actual surveys made by me or under my supervision, and that the same is true and correct to the best of my knowledge and belief.

Date Surveyed  
August 10, 1988

Registered Professional Engineer  
and Land Surveyor

John W. West

Certificate No. JOHN W. WEST, 676  
RONALD J. EIDSON, 3239