

STATE OF NEW MEXICO
ENERGY AND MINERALS DEPARTMENT

OIL CONSERVATION DIVISION
P. O. BOX 2088
SANTA FE, NEW MEXICO 87501

Form C-101
Revised 10-1-78

NO. OF COPIES RECEIVED	
DISTRIBUTION	
SANTA FE	
FILE	
U.S.G.S.	
LAND OFFICE	
OPERATOR	

5A. Indicate Type of Lease
STATE ☒ FEDERAL ☐
5. State Oil & Gas Lease No.
B-1608

APPLICATION FOR PERMIT TO DRILL, DEEPEN, OR PLUG BACK

1a. Type of Work b. Type of Well OIL WELL <input checked="" type="checkbox"/> GAS WELL <input type="checkbox"/> OTHER <input type="checkbox"/> DEEPEN <input type="checkbox"/> PLUG BACK <input type="checkbox"/> SINGLE ZONE <input type="checkbox"/> MULTIPLE ZONE <input type="checkbox"/>		7. Unit Agreement Name
2. Name of Operator Phillips Petroleum Company		8. Farm or Lease Name Santa Fe
3. Address of Operator 4001 Penbrook Street, Odessa, Texas 79762		9. Well No. 132
4. Location of Well UNIT LETTER <u>B</u> LOCATED <u>330</u> FEET FROM THE <u>North</u> LINE AND <u>2310</u> FEET FROM THE <u>East</u> LINE OF SEC. <u>33</u> TWP. <u>17-S</u> REC. <u>35-E</u> NMPM		10. Field and Pool, or Wildcat Vacuum Glorieta
		12. County Lea
19. Proposed Depth 6550'		19A. Formation Glorieta
20. Rotary or C.T. Rotary		
21. Elevations (Show whether DF, KT, etc.) 3946.6' GR (unprepared)	21A. Kind & Status Plug. Bond Blanket	21B. Drilling Contractor Will advise later
22. Approx. Date Work will start Upon approval		

PROPOSED CASING AND CEMENT PROGRAM

SIZE OF HOLE	SIZE OF CASING	WEIGHT PER FOOT	SETTING DEPTH	SACKS OF CEMENT	EST. TOP
12-1/4"	8-5/8"	24# K-55	1600'	1200 sx Class "C"	Surface
7-7/8"	5-1/2"	15.5# K-55	6450'	Set stage tool at 5200'. Circ to surface w/caliper + 30% of Class "C" and "Light" cement.	

Use mud additives as required for control.

BOP EQUIP: Series 900, 3000# WP (See attached schematic Fig. 7-09 or 7-10)

IN ABOVE SPACE DESCRIBE PROPOSED PROGRAM; IF PROPOSAL IS TO DEEPEN OR PLUG BACK, GIVE DATA ON PRESENT PRODUCTIVE ZONE AND PROPOSED NEW PRODUCTIVE ZONE. GIVE BLOWOUT PREVENTER PROGRAM, IF ANY.

I hereby certify that the information above is true and complete to the best of my knowledge and belief.

Signed W. J. Mueller Title Engineering Supervisor, Reservoir Date November 14, 1988

(This space for State Use)

ORIGINAL SIGNED BY JERRY SEXTON

APPROVED BY DISTRICT I SUPERVISOR

TITLE

DATE

CONDITIONS OF APPROVAL, IF ANY:

NOV 17 1988

Permit Expires 6 Months From Approval
Date Unless Drilling Underway.

MEXICO OIL CONSERVATION COMMISSION
WELL LOCATION AND ACREAGE DEDICATION PLAT

Form C-102
Supersedes C-128
Effective 1-1-65

All distances must be from the outer boundaries of the Section

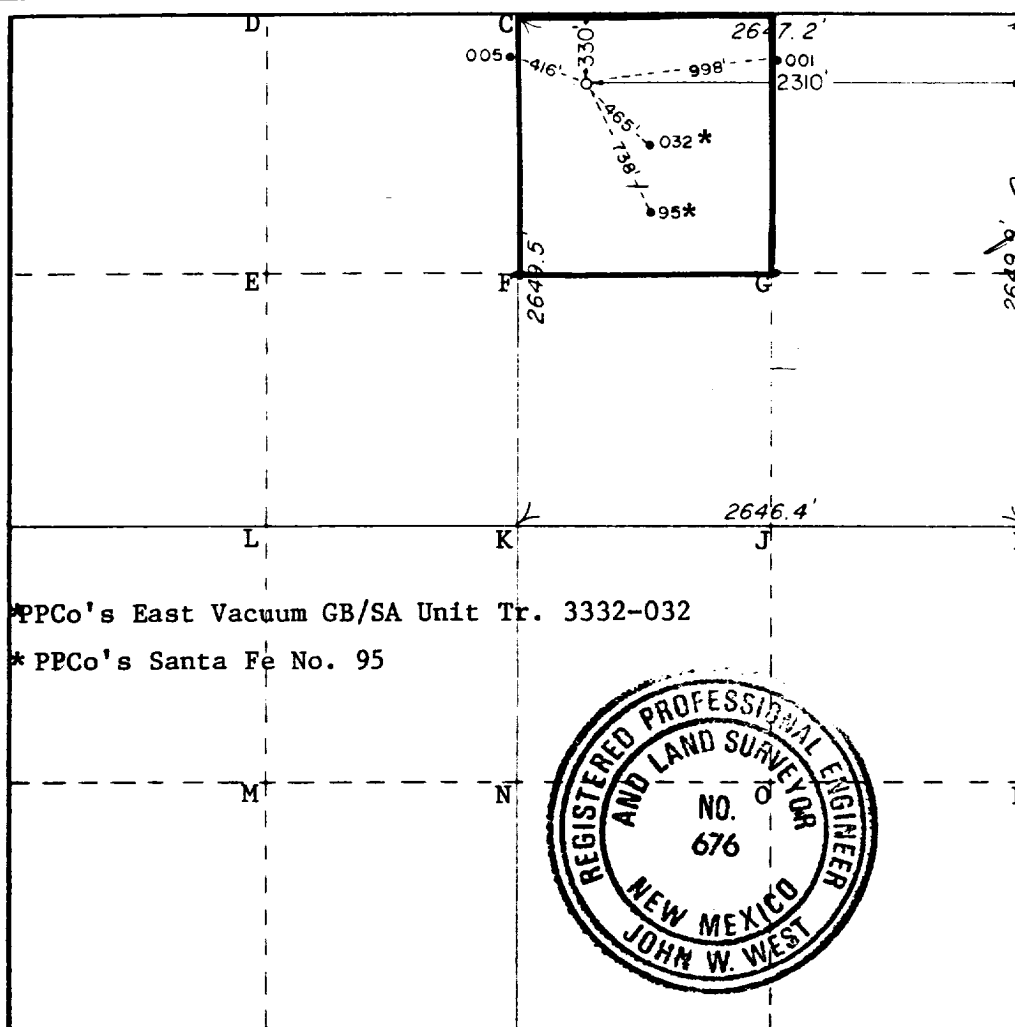
Operator Phillips Petroleum Company			Lease Santa Fe		Well No. 132
Unit Letter B	Section 33	Township 17 South	Range 35 East	County Lea	
Actual Footage Location of Well:					
330 feet from the North line and		2310 feet from the East line			
Ground Level Elev. 3946.6	Producing Formation Glorieta	Pool Vacuum Glorieta	Dedicated Acreage 40 Acres		

1. Outline the acreage dedicated to the subject well by colored pencil or hatchure marks on the plat below.
2. If more than one lease is dedicated to the well, outline each and identify the ownership thereof (both as to working interest and royalty).
3. If more than one lease of different ownership is dedicated to the well, have the interests of all owners been consolidated by communitization, unitization, force-pooling, etc?

☐ Yes ☐ No If answer is "yes," type of consolidation _____

If answer is "no," list the owners and tract descriptions which have actually been consolidated. (Use reverse side of this form if necessary.) _____

No allowable will be assigned to the well until all interests have been consolidated (by communitization, unitization, forced-pooling, or otherwise) or until a non-standard unit, eliminating such interests, has been approved by the Commission.



*PPCo's East Vacuum GB/SA Unit Tr. 3332-032
*PPCo's Santa Fe No. 95

CERTIFICATION

I hereby certify that the information contained herein is true and complete to the best of my knowledge and belief.

W. J. Mueller
W. J. Mueller

Engineering Supervisor, Resv.

Phillips Petroleum Company

November 14, 1988

I hereby certify that the well location shown on this plat was plotted from field notes of actual surveys made by me or under my supervision, and that the same is true and correct to the best of my knowledge and belief.

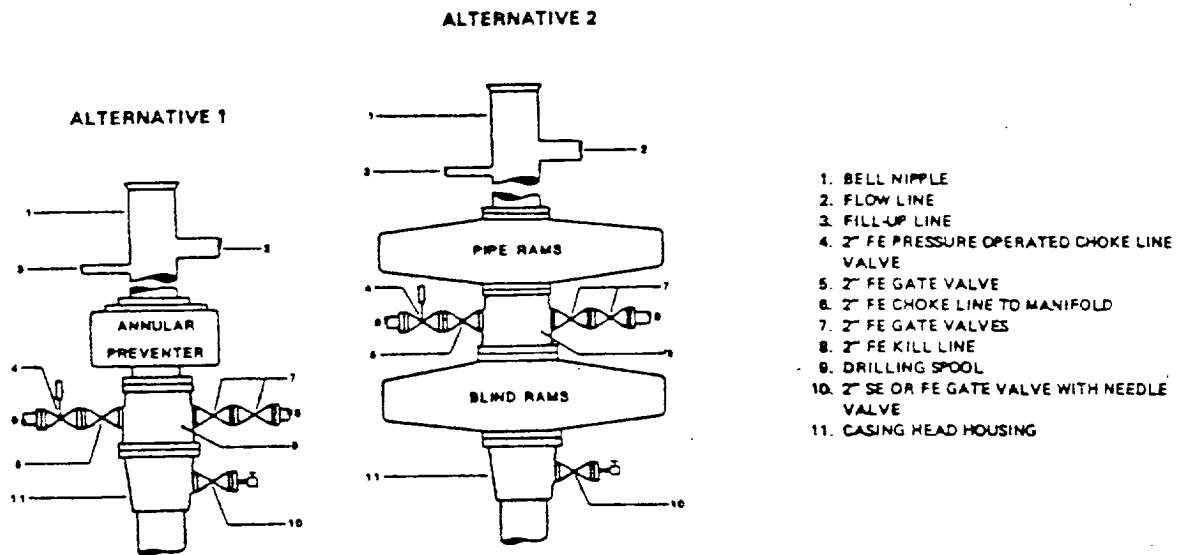
Date Surveyed

October 26, 1988

Registered Professional Engineer and/or Land Surveyor

Certificate No. JOHN W. WEST, 676
RONALD J. EIDSON, 3239

FIELD PRACTICES AND STANDARDS



NOTE: THE DRILLING SPOOL MAY BE LOCATED BELOW BOTH SETS OF RAMS IF A DOUBLE PREVENTER IS USED AND IT DOES NOT HAVE SUITABLE OUTLETS BETWEEN RAMS

Figure 7-9. Standard Hydraulic Blowout Preventer Assembly (2 M or 3 M Working Pressure) Alternative 1

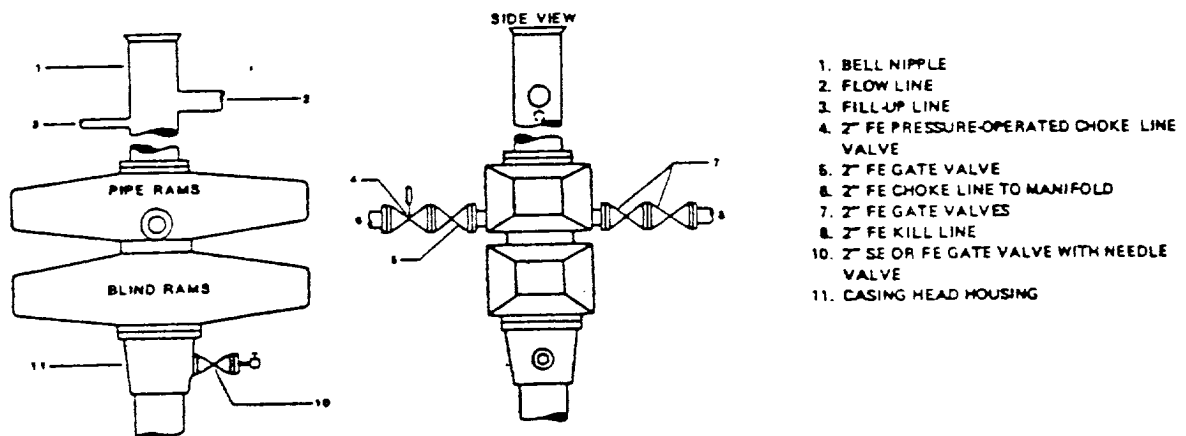


Figure 7-10. Standard Hydraulic Blowout Preventer Assembly (2 M or 3 M Working Pressure) Alternative 3 (without Drilling Spool)

68-52-1 8704

173

RECEIVED

NOV 16 1933

NOV 16 1933
NOV 16 1933