

STATE OF NEW MEXICO
ENERGY AND MINERALS DEPARTMENT

OIL CONSERVATION DIVISION

P. O. BOX 2088
SANTA FE, NEW MEXICO 87501

Form C-102
Revised 10-1-78

All distances must be from the outer boundaries of the Section.

Operator MOBIL EXPLORATION AND PRODUCING U.S. INC.			Lease STATE SECTION 22 COM		Well No. 1
Unit Letter I	Section 22	Township 17-S	Range 35-E	County LEA	
Actual Footage Location of Well: 1980 feet from the SOUTH line and 660 feet from the EAST line					
Ground Level Elev. 3931	Producing Formation Atoka Gas	Pool Undesignated		Dedicated Acreage: 240 Acres	

1. Outline the acreage dedicated to the subject well by colored pencil or hatchure marks on the plat below.

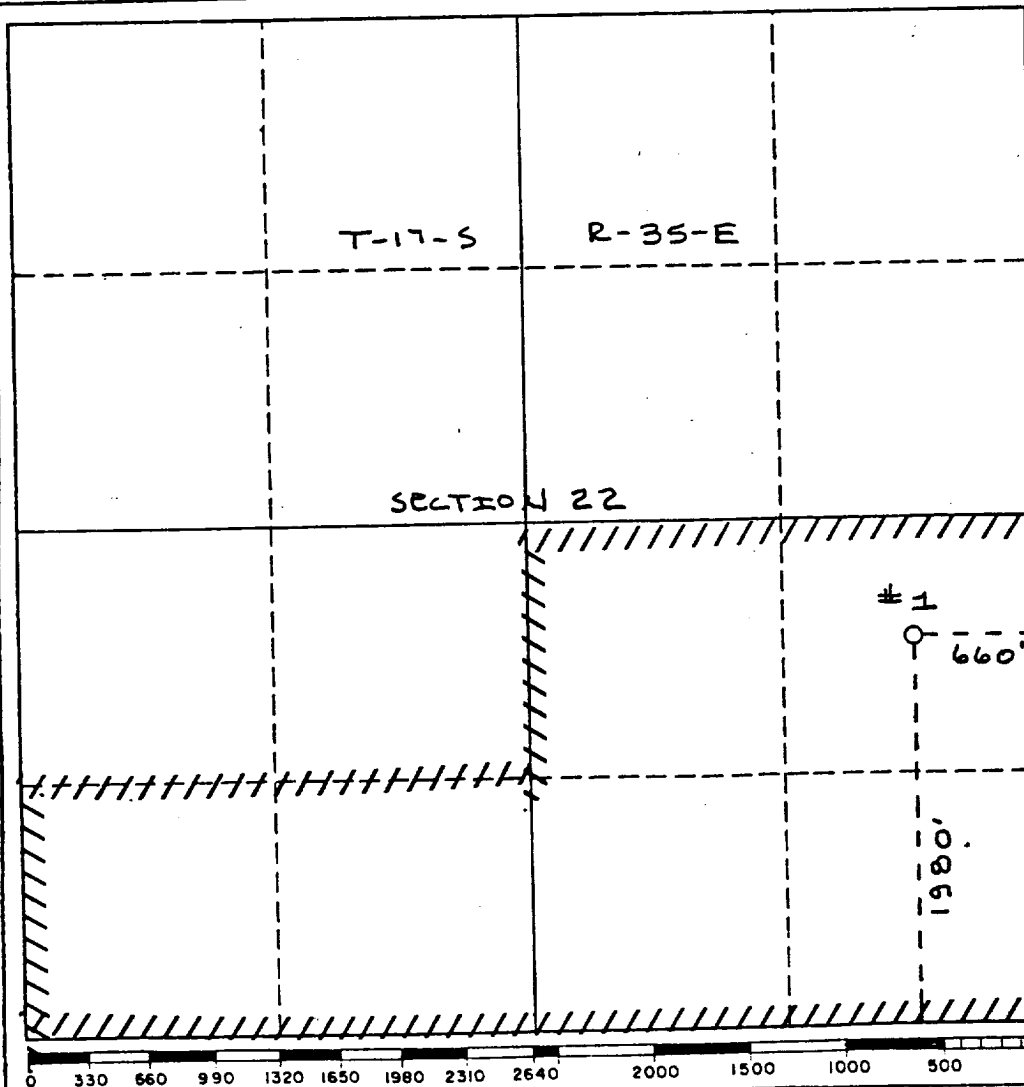
2. If more than one lease is dedicated to the well, outline each and identify the ownership thereof (both as to working interest and royalty).

3. If more than one lease of different ownership is dedicated to the well, have the interests of all owners been consolidated by communitization, unitization, force-pooling, etc?

☒ Yes ☐ No If answer is "yes," type of consolidation Communitization

If answer is "no," list the owners and tract descriptions which have actually been consolidated. (Use reverse side of this form if necessary.)

No allowable will be assigned to the well until all interests have been consolidated (by communitization, unitization, forced-pooling, or otherwise) or until a non-standard unit, eliminating such interests, has been approved by the Division.



CERTIFICATION

I hereby certify that the information contained herein is true and complete to the best of my knowledge and belief.

C.A. Moore for M.E. Sweeney

Manager,
Environmental & Regulatory

Position
Mobil Producing Texas & N.M. Inc.
acting by and through its agent

Company
Mobil Exploration & Producing

Date
November 18, 1988

I hereby certify that the well location shown on this plat was plotted from field notes of actual surveys made by me or under my supervision, and that the same is true and correct to the best of my knowledge and belief.

Date Surveyed
5-20-88

Registered Professional Engineer
and/or Land Surveyor

Certificate No.
9669