

Submit to Appropriate  
District Office  
State Lease - 4 copies  
Fee Lease - 3 copies

State of New Mexico  
Energy, Minerals and Natural Resources Department.

Form C-102  
Revised 1-1-89

**OIL CONSERVATION DIVISION**

P.O. Box 2088  
Santa Fe, New Mexico 87504-2088

**DISTRICT I**  
P.O. Box 1980, Hobbs, NM 88240

**DISTRICT II**  
P.O. Drawer DD, Artesia, NM 88210

**DISTRICT III**  
1000 Rio Brazos Rd., Aztec, NM 87410

**WELL LOCATION AND ACREAGE DEDICATION PLAT**

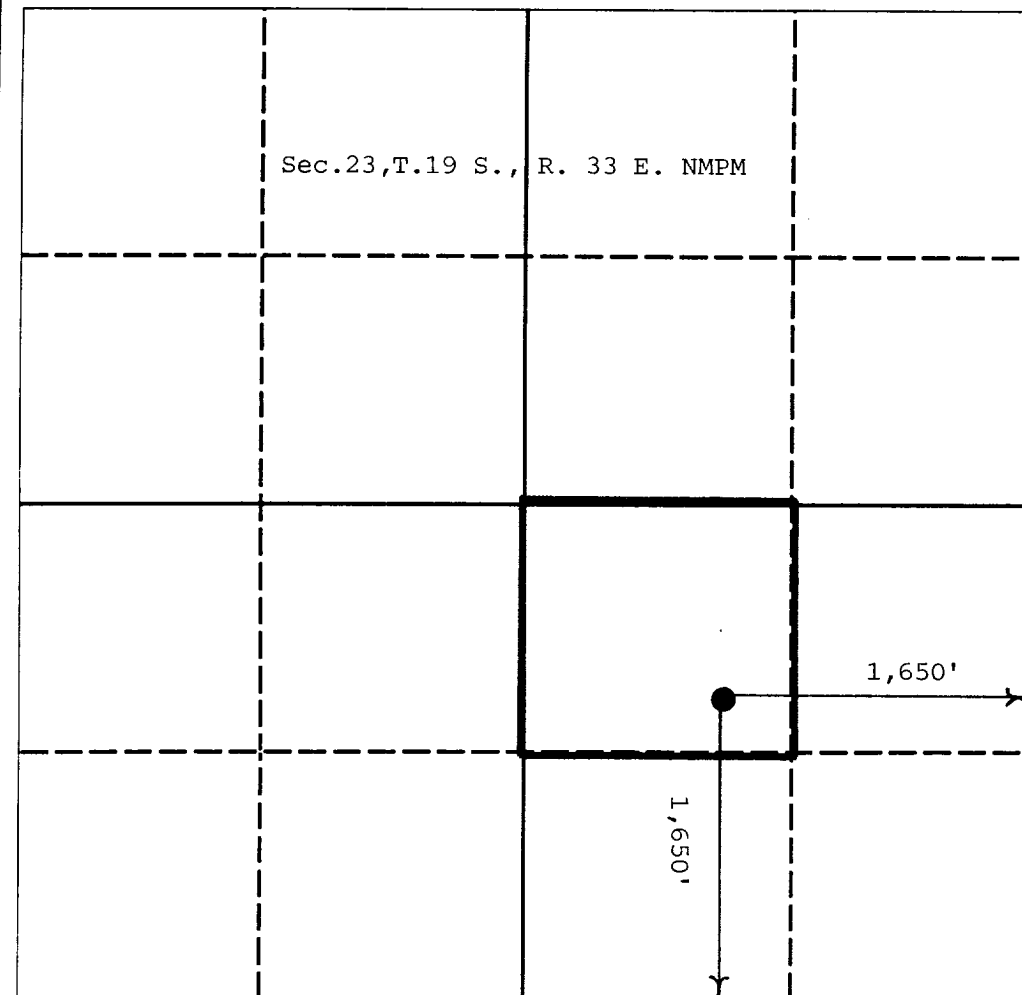
All Distances must be from the outer boundaries of the section

Operator Mitchell Energy Corporation			Lease Sapphire Federal Unit		Well No. 1
Unit Letter J	Section 23	Township 19S	Range 33E	County NMPM Lea	

Actual Footage Location of Well:

1,650 feet from the east line and 1,650 feet from the south line  
Ground level Elev. 3,639 Producing Formation Bone Spring Pool Wildcat Bone Spring Dedicated Acreage: 40 Acres

1. Outline the acreage dedicated to the subject well by colored pencil or hatchure marks on the plat below.
2. If more than one lease is dedicated to the well, outline each and identify the ownership thereof (both as to working interest and royalty).
3. If more than one lease of different ownership is dedicated to the well, have the interest of all owners been consolidated by communitization, unitization, force-pooling, etc.?  
☐ Yes ☐ No If answer is "yes" type of consolidation \_\_\_\_\_  
If answer is "no" list the owners and tract descriptions which have actually been consolidated. (Use reverse side of this form if necessary). \_\_\_\_\_  
No allowable will be assigned to the well until all interests have been consolidated (by communitization, unitization, forced-pooling, or otherwise) or until a non-standard unit, eliminating such interest, has been approved by the Division.



**OPERATOR CERTIFICATION**

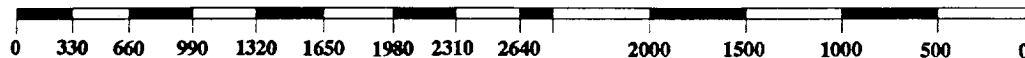
I hereby certify that the information contained herein is true and complete to the best of my knowledge and belief.

Signature *George Mullen*  
Printed Name George Mullen  
Position Reg. Affairs Specialist  
Company Mitchell Energy Corp.  
Date June 19, 1991

**SURVEYOR CERTIFICATION**

I hereby certify that the well location shown on this plat was plotted from field notes of actual surveys made by me or under my supervision, and that the same is true and correct to the best of my knowledge and belief.

Date Surveyed \_\_\_\_\_  
Signature & Seal of Professional Surveyor \_\_\_\_\_  
Certificate No. \_\_\_\_\_



RECEIVED

JUN 27 1991

Old  
HOBBS OFFICE