

UNITED STATES GEOLOGICAL SURVEY
DEPARTMENT OF THE INTERIOROther instructions on
reverse side)

30-025-30546

APPLICATION FOR PERMIT TO DRILL, DEEPEN, OR PLUG BACK

1a. TYPE OF WORK

DRILL ☒DEEPEN ☐PLUG BACK ☐

b. TYPE OF WELL

OIL
WELL ☐GAS
WELL ☒

OTHER

SINGLE
ZONE ☐MULTIPLE
ZONE ☐

2. NAME OF OPERATOR

Sun Exploration & Production Company

3. ADDRESS OF OPERATOR

P.O. Box 1861, Midland, Texas 79702

4. LOCATION OF WELL (Report location clearly and in accordance with any State requirements.)*

At surface

Unit Ltr G, 1980' FNL & 1980' FEL

At proposed prod. zone

14. DISTANCE IN MILES AND DIRECTION FROM NEAREST TOWN OR POST OFFICE*

54 miles NW from Hobbs

15. DISTANCE FROM PROPOSED*

LOCATION TO NEAREST
PROPERTY OR LEASE LINE, FT.
(Also to nearest drlg. unit line, if any)

1980'

16. NO. OF ACRES IN LEASE

320

17. NO. OF ACRES ASSIGNED
TO THIS WELL

320

18. DISTANCE FROM PROPOSED LOCATION*

TO NEAREST WELL, DRILLING, COMPLETED,
OR APPLIED FOR, ON THIS LEASE, FT.

None

19. PROPOSED DEPTH

13,850'

20. ROTARY OR CABLE TOOLS

Rotary

21. ELEVATIONS (Show whether DF, RT, GR, etc.)

3651.4' GR

22. APPROX. DATE WORK WILL START*

ASAP

23.

PROPOSED CASING AND CEMENTING PROGRAM

SIZE OF HOLE	SIZE OF CASING	WEIGHT PER FOOT	SETTING DEPTH	QUANTITY OF CEMENT
17 1/2"	13-3/8"	54.5#	400'	425 Sxs CIRCULATE
12-1/4"	8-5/8"	32#	± 5200'	2000 Sxs CIRCULATE
7-7/8"	5-1/2"	17 & 20#	13,700'	1825 Sxs

APPROVAL SUBJECT TO
GENERAL REQUIREMENTS AND
SPECIAL STIPULATIONS
ATTACHED

RECEIVED

IN ABOVE SPACE DESCRIBE PROPOSED PROGRAM: If proposal is to deepen or plug back, give data on present productive zone and proposed new productive zone. If proposal is to drill or deepen directionally, give pertinent data on subsurface locations and measured and true vertical depths. Give blowout preventer program, if any.

24.

SIGNED

DeAnn Kemp

TITLE

Accountant

DATE

1-12-89

(This space for Federal or State office use)

PERMIT NO.

APPROVAL DATE

APPROVED BY

Lawrence P. Poynter

TITLE

AREA MANAGER
CARLSBAD RESOURCE AND

DATE

1-26-89

CONDITIONS OF APPROVAL, IF ANY:

*See Instructions On Reverse Side

NEW MEXICO OIL CONSERVATION COMMISSION
WELL LOCATION AND ACREAGE DEDICATION PLAT

Form C-102
Supersedes C-128
Effective 1-1-65

All distances must be from the outer boundaries of the Section

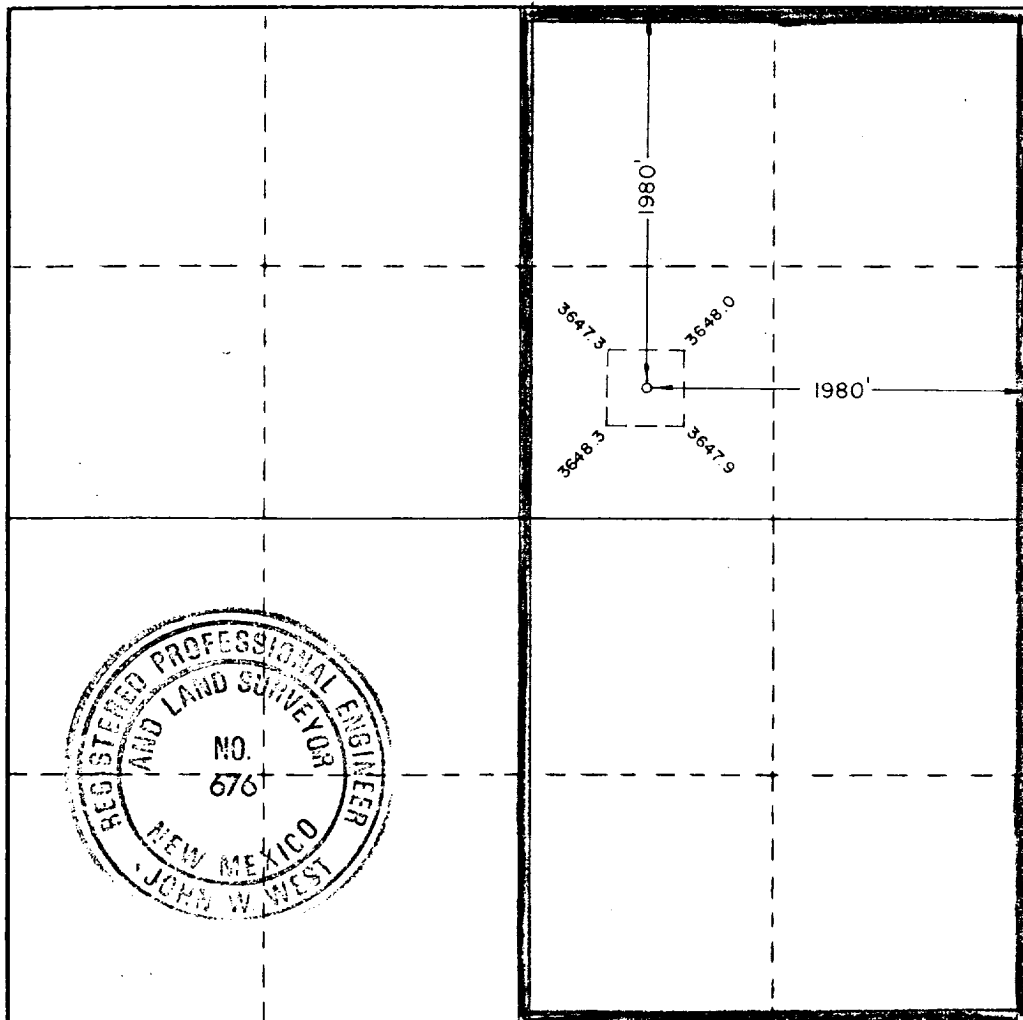
Operator Sun Exploration & Production Co.		Lease Hudson Federal Com.		Well No. 1
Unit Letter G	Section 17	Township 19 South	Range 33 East	County Lea County
Actual Footage Location of Well:				
1980 feet from the North line and		1980 feet from the East line		
Ground Level Elev. 3648.5	Producing Formation Morrow	Pool Gem-Morrow Gas	Dedicated Acreage: 320 Acres	

1. Outline the acreage dedicated to the subject well by colored pencil or hachure marks on the plat below.
2. If more than one lease is dedicated to the well, outline each and identify the ownership thereof (both as to working interest and royalty).
3. If more than one lease of different ownership is dedicated to the well, have the interests of all owners been consolidated by communitization, unitization, force-pooling, etc?

☐ Yes ☐ No If answer is "yes," type of consolidation _____

If answer is "no," list the owners and tract descriptions which have actually been consolidated. (Use reverse side of this form if necessary.) _____

No allowable will be assigned to the well until all interests have been consolidated (by communitization, unitization, forced-pooling, or otherwise) or until a non-standard unit, eliminating such interests, has been approved by the Commission.



CERTIFICATION

I hereby certify that the information contained herein is true and complete to the best of my knowledge and belief.

Dee Ann Kemp

Name

Dee Ann Kemp

Position

Accountant

Company

Sun Expl. & Prod. Co.

Date

1-12-89

I hereby certify that the well location shown on this plat was plotted from field notes of actual surveys made by me or under my supervision, and that the same is true and correct to the best of my knowledge and belief.

Date Surveyed

December 16, 1988

Registered Professional Engineer and Land Surveyor

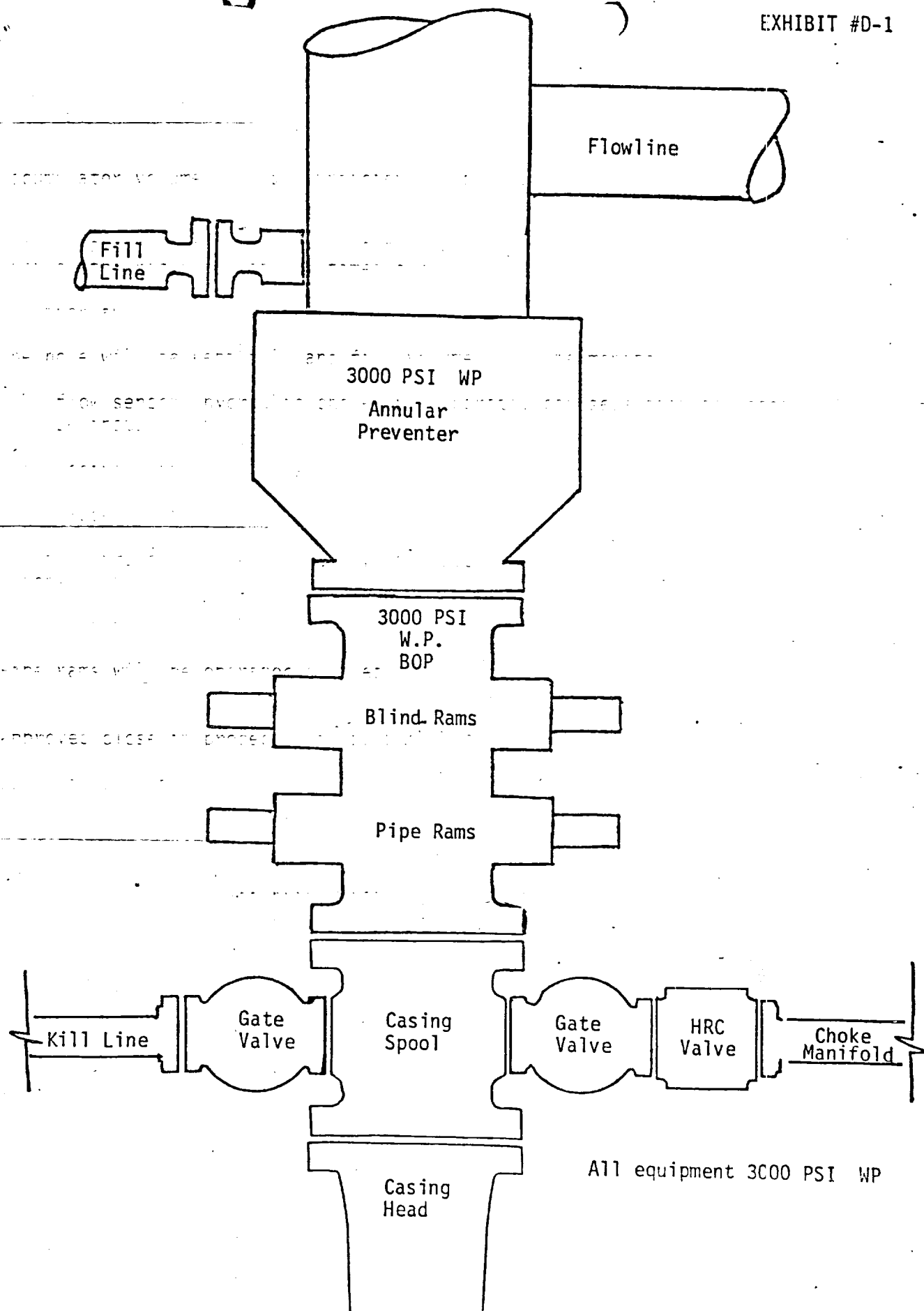
John W. West

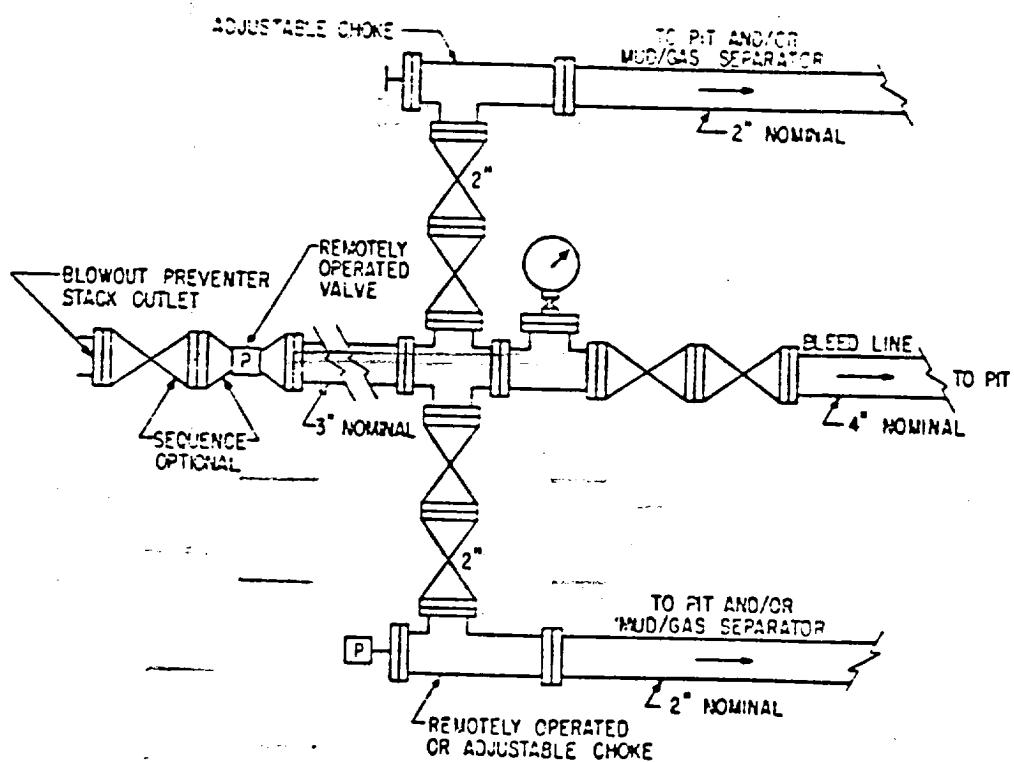
Certificate No. JOHN W. WEST,

676

RONALD J. EIDSON,

3239





Rec'd 12-89
173

JAN 30 1989
OCD
MOBBS OFFICE