

UNITED STATES
DEPARTMENT OF THE INTERIOR
GEOLOGICAL SURVEYForm approved.
Budget Bureau No. 42-R1425.

RECEIVED

APPLICATION FOR PERMIT TO DRILL, DEEPEN, OR PLUG BACK

1a. TYPE OF WORK

DRILL ☒DEEPEN ☐PLUG BACK ☐

b. TYPE OF WELL

OIL
WELL ☒GAS
WELL ☐

OTHER

SINGLE
ZONE ☒MULTIPLE
ZONE ☐

2. NAME OF OPERATOR

Meridian Oil Inc.

3. ADDRESS OF OPERATOR

21 Desta Drive Midland, Texas 79705

4. LOCATION OF WELL (Report location clearly and in accordance with any State requirements.)*

At surface

1980 FWL & 660 FNL, Sec 8, T-18-S, R-32-E

At proposed prod. zone

14. DISTANCE IN MILES AND DIRECTION FROM NEAREST TOWN OR POST OFFICE*

6 miles south of Maljamar

15. DISTANCE FROM PROPOSED*

LOCATION TO NEAREST
PROPERTY OR LEASE LINE, FT.
(Also to nearest drlg. unit line, if any)

660'

16. NO. OF ACRES IN LEASE

160

17. NO. OF ACRES ASSIGNED
TO THIS WELL

40

18. DISTANCE FROM PROPOSED LOCATION*
TO NEAREST WELL, DRILLING, COMPLETED,
OR APPLIED FOR, ON THIS LEASE, FT.

1320'

19. PROPOSED DEPTH

8900'

20. ROTARY OR CABLE TOOLS

Rotary

21. ELEVATIONS (Show whether DF, RT, GR, etc.)

3802' GR

22. APPROX. DATE WORK WILL START*

3-1-89

23.

PROPOSED CASING AND CEMENTING PROGRAM

SIZE OF HOLE	SIZE OF CASING	WEIGHT PER FOOT	SETTING DEPTH	QUANTITY OF CEMENT
17-1/2"	13-3/8"	48#	400'	400 sx Cl "C" CIRCULATE
12-1/4"	8-5/8"	24#	2800'	1400 sx Lite "C" CIRCULATE
7-7/8	5-1/2"	15.5# & 17#	8900'	400 sx. TOC @ 6500'

Drill 17-1/2" hole to 400'. Set 13-3/8" csg @ 400'. Cmt w/400 sx Cl "C", Circ. Drill 12-1/4" hole to 2800'. Run Fluid Caliper. Set 8-5/8" csg @ 2800'. Lead w/1200 sx Lite "C", tail in w/200 sx Cl "C", circ. Drill to TD to test First Bone Spring Sandstone and Second Bone Spring Dolomite. If commercial, run 5-1/2" csg to 8900'. Perf & stim. Bone Spring Dolomite for production.

MUD PROGRAM: 0-400' spud mud; 400'-2800' brine; 2800'-8000' cut brine & sweeps (chloride 30,000+). 8000'-TD cut brine & Drispac. MW 9.0-0.2 (Solids must be less than 5% w/VIS 32-36).

BOP PROGRAM: 13-5/8"-2M annular BOP to be installed on 13-3/8" csg. 11"-3M stack to be installed on 8-5/8" & left on for remainder of drlg. Stack to consist of annular BOP, blind ram BOP & one pipe ram BOP. Test BOP's after setting 8-5/8" csg with an independent tester.

IN ABOVE SPACE DESCRIBE PROPOSED PROGRAM: If proposal is to deepen or plug back, give data on present productive zone and proposed new productive zone. If proposal is to deepen directionally, give pertinent data on subsurface locations and measured and true vertical depths. Give blowout preventer program, if any.

24.

SIGNED

Operations Tech III

DATE 2-1-89

(This space for Federal or State office use)

PERMIT NO.

APPROVAL DATE

APPROVED BY

TITLE

DATE

CONDITIONS OF APPROVAL, IF ANY:

APPROVAL SUBJECT TO
GENERAL REQUIREMENTS AND
SPECIAL STIPULATIONS
ATTACHED

*See Instructions On Reverse Side

**NEW MEXICO OIL CONSERVATION COMM. ION
WELL LOCATION AND ACREAGE DEDICATION PLAT**

Form C-102
Supersedes C-1
Effective 1-1-6

All distances must be from the outer boundaries of the Section.

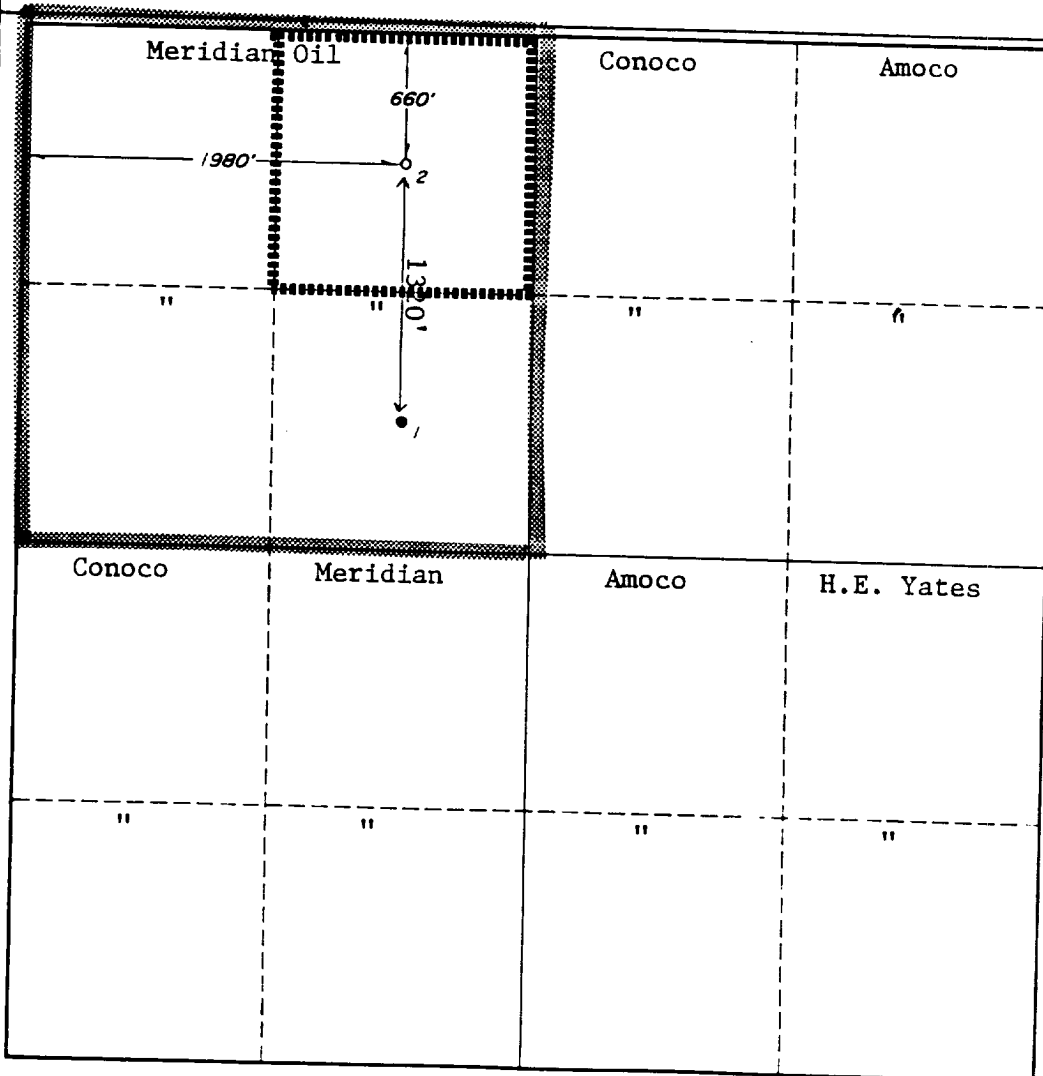
Operator MERIDIAN OIL, INC.			Lease FEDERAL AM			Well No. 2
Unit Letter C	Section 8	Township 18-SOUTH	Range 32-EAST	County LEA		
Actual Footage Location of Well:						
660		feet from the	NORTH	line and	1980	feet from the
3802'		Ground Level Elev.	Bone Springs	Producing Formation	North Young	Pool
						Dedicated Acreage: 40
						Acres:

1. Outline the acreage dedicated to the subject well by colored pencil or hatchure marks on the plat below.
2. If more than one lease is dedicated to the well, outline each and identify the ownership thereof (both as to working interest and royalty).
3. If more than one lease of different ownership is dedicated to the well, have the interests of all owners been consolidated by communitization, unitization, force-pooling, etc?

☐ Yes ☐ No If answer is "yes," type of consolidation _____

If answer is "no," list the owners and tract descriptions which have actually been consolidated. (Use reverse side of this form if necessary.) _____

No allowable will be assigned to the well until all interests have been consolidated (by communitization, unitization, forced-pooling, or otherwise) or until a non-standard unit, eliminating such interests, has been approved by the Commission.

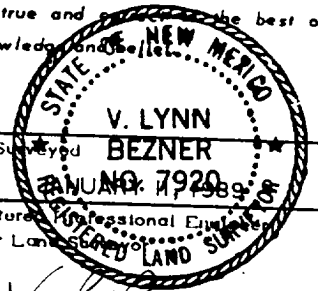


CERTIFICATION

I hereby certify that the information contained herein is true and complete to the best of my knowledge and belief.

Connie Monahan
Name
Position
Operations Tech III
Company
Meridian Oil Inc.
Date
2-1-89

I hereby certify that the well location shown on this plat was plotted from field notes of actual surveys made by me or under my supervision, and that the same is true and correct to the best of my knowledge and belief.



Date Surveyed
January 7, 1989
Registered Professional Engineer
and/or Land Surveyor
V. Lynn Bezner
Certificate No.

7920

RECEIVED

MAR 10 1989

OCD
HONEST OFFICE

BLOWOUT PREVENTION EQUIPMENT
 10" 900s ALL FLANGED EQUIPMENT
 5,000# WORKING PRESSURE - 10,000# TEST

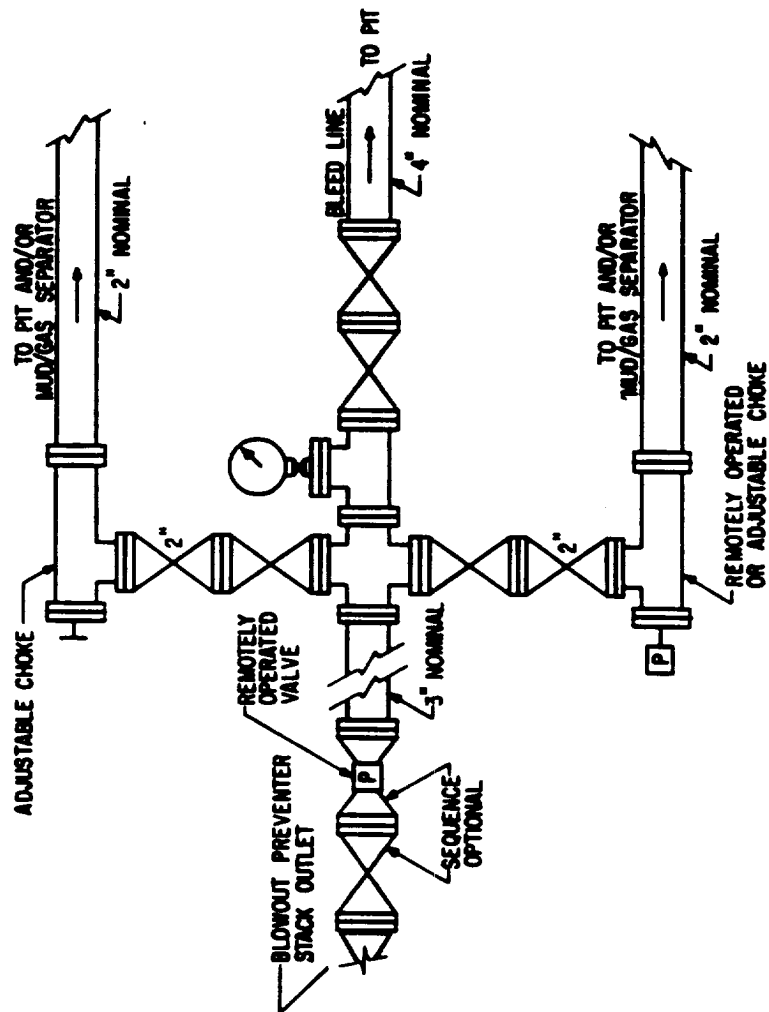
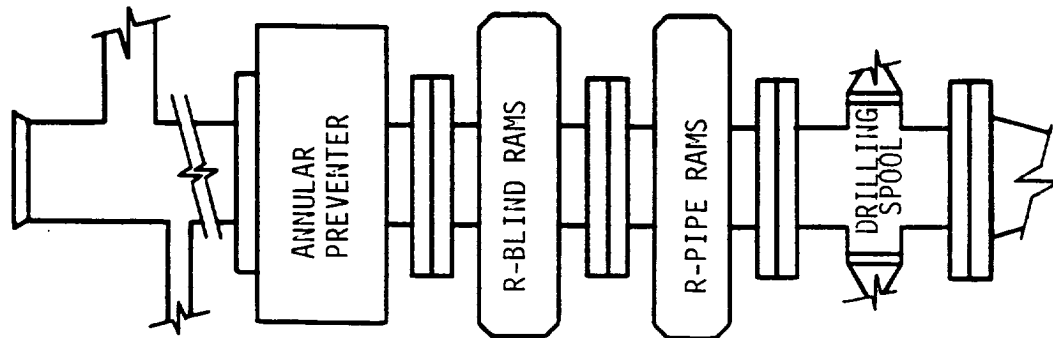


FIG. 3.A.2
 TYPICAL CHOKE MANIFOLD ASSEMBLY FOR 5M
 RATED WORKING PRESSURE SERVICE -
 SURFACE INSTALLATION

69-897 post
FBI

RECEIVED

MAR 10 1989

OCB
HOBBS OFFICE