

30-025-30590

DEPARTMENT OF THE INTERIOR
BUREAU OF LAND MANAGEMENT

APPLICATION FOR PERMIT TO DRILL, DEEPEN, OR PLUG BACK

1a. TYPE OF WORK

DRILL ☒

DEEPEN ☐

PLUG BACK ☐

b. TYPE OF WELL

OIL
WELL ☒

GAS
WELL ☐

OTHER

SINGLE
ZONE ☒

MULTIPLE
ZONE ☐

2. NAME OF OPERATOR

Siete Oil & Gas Corporation

3. ADDRESS OF OPERATOR

P.O. Box 2523

Roswell, NM 88202-2523

4. LOCATION OF WELL (Report location clearly and in accordance with any State requirements.)*

At surface 2310' FSL & 1980' FWL, NE $\frac{1}{4}$ SW $\frac{1}{4}$, Unit Letter K

At proposed prod. zone Same

14. DISTANCE IN MILES AND DIRECTION FROM NEAREST TOWN OR POST OFFICE*

6 air miles South of Maljamar

15. DISTANCE FROM PROPOSED*

LOCATION TO NEAREST
PROPERTY OR LEASE LINE, FT.
(Also to nearest drig. unit line, if any)

660'

18. DISTANCE FROM PROPOSED LOCATION*
TO NEAREST WELL, DRILLING, COMPLETED,
OR APPLIED FOR, ON THIS LEASE, FT.

N/A

16. NO. OF ACRES IN LEASE

1361.18

19. PROPOSED DEPTH

6500'

17. NO. OF ACRES ASSIGNED
TO THIS WELL

40

20. ROTARY OR CABLE TOOLS

Rotary

21. ELEVATIONS (Show whether DF, RT, GR, etc.)

3804' GR

22. APPROX. DATE WORK WILL START*

ASAP

23. PROPOSED CASING AND CEMENTING PROGRAM

SIZE OF HOLE	SIZE OF CASING	WEIGHT PER FOOT	SETTING DEPTH	QUANTITY OF CEMENT
12 1/4"	8 5/8"	24#	400'	500 sks <u>circ</u>
7 7/8"	5 1/2"	15.5# & 17#	6500'	Sufficient to isolate all oil, gas & water zones.

Selectively perforate and treat pay zones.

APPROVAL SUBJECT TO
GENERAL REQUIREMENTS AND
SPECIAL STIPULATIONS
ATTACHED

Attachments:

Survey plat (C-102)
Supplemental drilling data
Surface use plan



IN ABOVE SPACE DESCRIBE PROPOSED PROGRAM: If proposal is to deepen or plug back, give data on present productive zone and proposed new productive zone. If proposal is to drill or deepen directionally, give pertinent data on subsurface locations and measured and true vertical depths. Give blowout preventer program, if any.

24.

SIGNED

Cathy D. Batley

TITLE

Drilling & Production

DATE

3/28/89

(This space for Federal or State office use)

PERMIT NO.

APPROVAL DATE

APPROVED BY

Serg Adam

TITLE

AREA MANAGER
CARLSBAD RESOURCE AREA

DATE

4-10-89

CONDITIONS OF APPROVAL, IF ANY:

*See Instructions On Reverse Side

Title 18 U.S.C. Section 1001, makes it a crime for any person knowingly and willfully to make to any department or agency of the United States any false, fictitious or fraudulent statements or representations as to any matter within its jurisdiction.

RECEIVED

APR 12 1989

OCD
MOBBS OFFICE

NEW MEXICO OIL CONSERVATION COMMISSION
WELL LOCATION AND ACREAGE DEDICATION PLAT

Form C-102
Supersedes C-128
Effective 1-1-65

All distances must be from the outer boundaries of the Section.

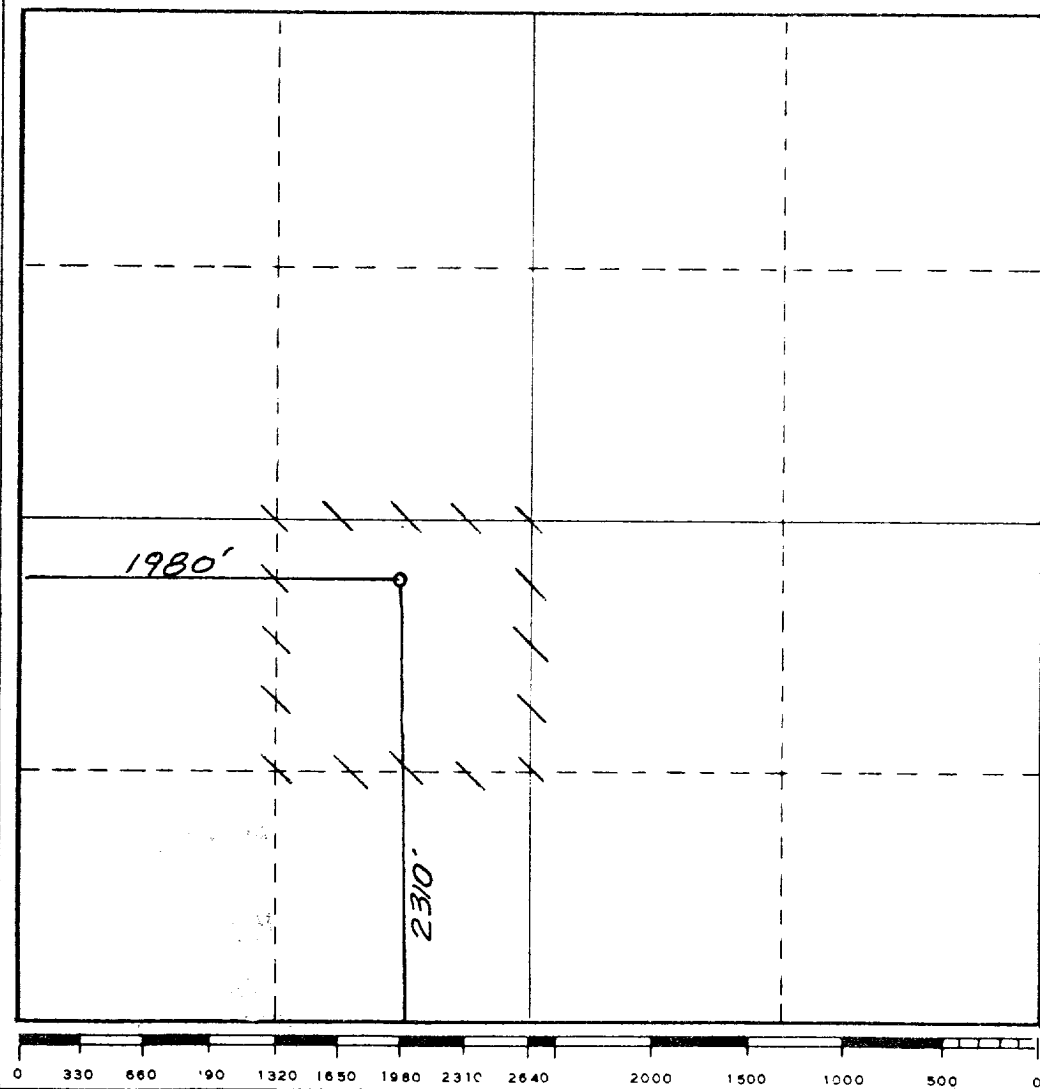
Operator SIETE OIL & GAS CORPORATION			Lease Yuma Federal		Well No. 1
Unit Letter K	Section 14	Township 18 South	Range 32 East	County Lea County, N.M.	
Actual Footage Location of Well: 2310 feet from the South line and 1980 feet from the West line					
Ground Level Elev. 3804.	Producing Formation Delaware		Pool West Corbin Delaware Querecho Plains	Dedicated Acreage: 40 Acres	

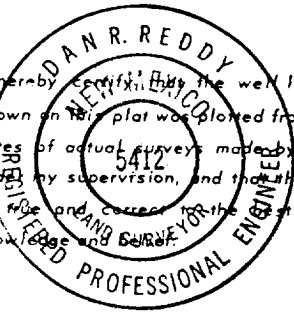
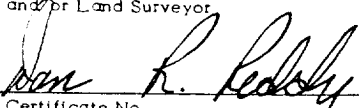
1. Outline the acreage dedicated to the subject well by colored pencil or hachure marks on the plat below.
2. If more than one lease is dedicated to the well, outline each and identify the ownership thereof (both as to working interest and royalty).
3. If more than one lease of different ownership is dedicated to the well, have the interests of all owners been consolidated by communitization, unitization, force-pooling, etc?

☐ Yes ☐ No If answer is "yes," type of consolidation _____

If answer is "no," list the owners and tract descriptions which have actually been consolidated. (Use reverse side of this form if necessary.) _____

No allowable will be assigned to the well until all interests have been consolidated (by communitization, unitization, forced-pooling, or otherwise) or until a non-standard unit, eliminating such interests, has been approved by the Commission.



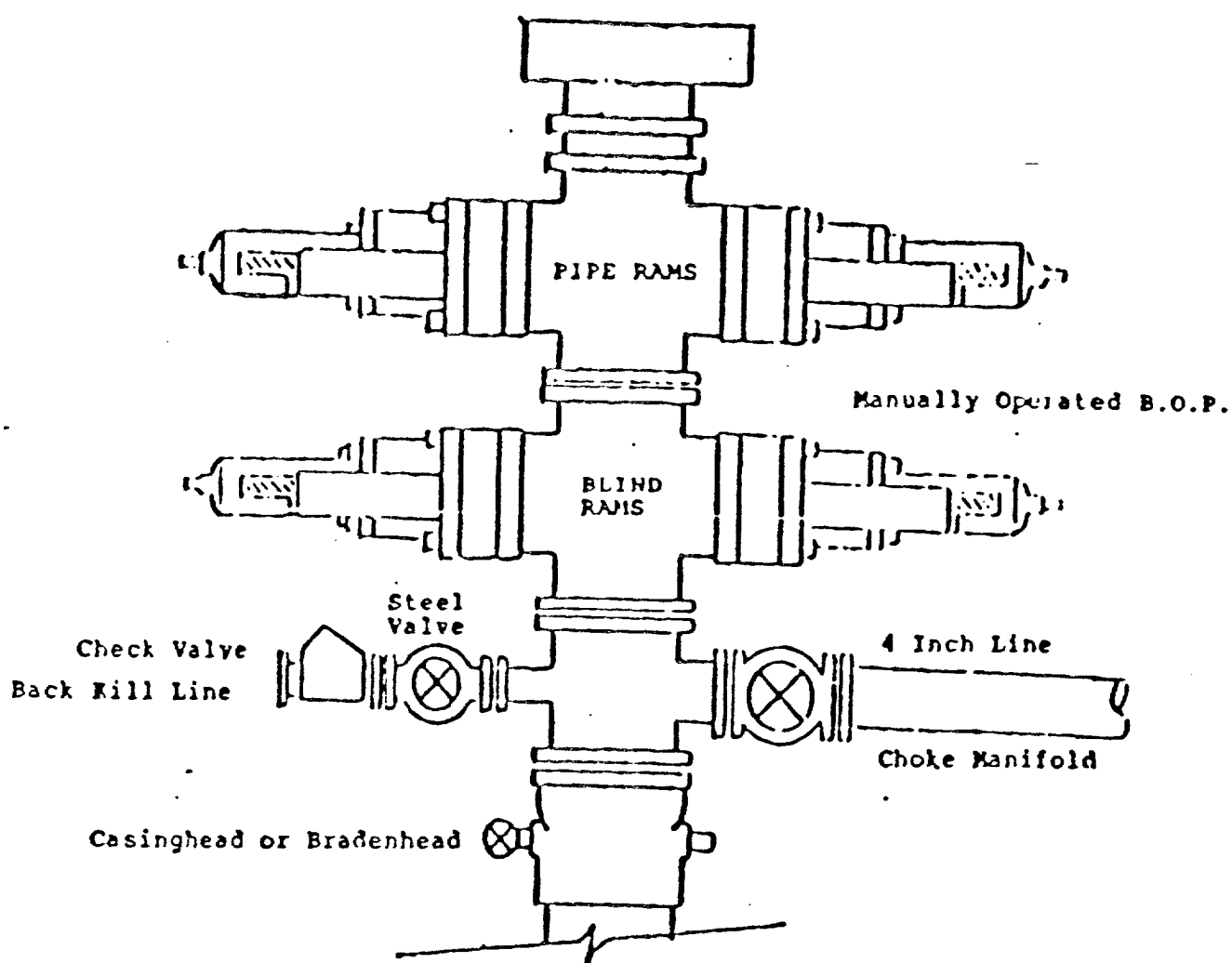
CERTIFICATION	
I hereby certify that the information contained herein is true and complete to the best of my knowledge and belief.	
Name	Harold D. Justice
Position	V.P. Drilling & Production
Company	Siete Oil & Gas Corporation
Date	March 28, 1989
 <p>I hereby certify that the well location shown on this plat was plotted from field notes of actual surveys made by me or under my supervision, and that the same is true and correct to the best of my knowledge and belief.</p>	
Date Surveyed	March 15, 1989
Registered Professional Engineer and/or Land Surveyor	
	
Certificate No.	5412
NM PE&LS NO. 5412	

RECEIVED

APR 12 1989

**OCD
HOBBS OFFICE**

BOP DIAGRAM
RATED 30001



68-8-6 8024

173

RECEIVED

APR 12 1989

GCH
MOBILE OFFICE