

U. S. DEPT. OF THE INTERIOR  
BUREAU OF LAND MANAGEMENT  
UNITED STATES MEXICO  
DEPARTMENT OF THE INTERIOR  
BUREAU OF LAND MANAGEMENT  
SUBMIT IN TRIPLICATE\*  
(Other instructions on reverse side)

30-025-30606  
Form approved.  
Budget Bureau No. 1004-0136  
Expires August 31, 1985

APPLICATION FOR PERMIT TO DRILL, DEEPEN, OR PLUG BACK

1A. TYPE OF WORK

DRILL ☒

DEEPEN ☐

PLUG BACK ☐

B. TYPE OF WELL

OIL WELL ☒

GAS WELL ☐

OTHER ☐

SINGLE ZONE ☐

MULTIPLE ZONE ☐

2. NAME OF OPERATOR

MERIDIAN OIL INC.

3. ADDRESS OF OPERATOR

21 DESTA DRIVE, MIDLAND, TEXAS 79702

4. LOCATION OF WELL (Report location clearly and in accordance with any State requirements.)

At surface

560' FSL & 1880' FWL, Sec. 8, T-18-S, R-32-E

At proposed prod. zone

Unit N

N-SESW

14. DISTANCE IN MILES AND DIRECTION FROM NEAREST TOWN OR POST OFFICE\*

6.5 miles south of Maljamar

16. DISTANCE FROM PROPOSED\*

LOCATION TO NEAREST PROPERTY OR LEASE LINE, FT. (Also to nearest drlg. unit line, if any)

560'

18. NO. OF ACRES IN LEASE

80

17. NO. OF ACRES ASSIGNED TO THIS WELL

40

18. DISTANCE FROM PROPOSED LOCATION\* TO NEAREST WELL, DRILLING, COMPLETED, OR APPLIED FOR, ON THIS LEASE, FT.

1420'

19. PROPOSED DEPTH

10,800'

20. ROTARY OR CABLE TOOLS

Rotary

21. ELEVATIONS (Show whether DF, RT, GR, etc.)

3772' GL

22. APPROX. DATE WORK WILL START\*

15 May 89

23.

PROPOSED CASING AND CEMENTING PROGRAM

SIZE OF HOLE	SIZE OF CASING	WEIGHT PER FOOT	SETTING DEPTH	QUANTITY OF CEMENT
17 1/2"	13 3/8"	48	400'	400 sx CIRCULAT
12 1/4"	8 5/8"	24	2,800'	1,400 sx CIRCULAT
7 7/8"	5 1/2"	15.50 & 17.0	10,800'	450 sx

Drill 17 1/2" hole to 400'. Set 13 3/8" csg @ 400'. Cmt w/400 sx Cl. "C", circ. Drill 12 1/4" hole to 2,800'. Run fluid caliper. Set 8 5/8" csg @ 2,800'. Lead w/1200 sx Lite "C", tail in w/200 sx Cl. "C", circ. Drill 7 7/8" hole to TD. Set 5 1/2" csg @ 10,800'. Cmt w/450 sx Cl. "H". TOC @ 8,000'.

Mud Program: 0-400' spud mud; 400'-2,800' brine; 2,800'-8,000' cut brine & sweeps (chloride 30,000+). 8,000' to TD, cut brine & Drispac. MW 9.0-0.2 (solids must be less than 5% w/VIS 32-36).

BOP Program: 13 5/8" - 2M annular BOP to be installed on 13 3/8" csg. 11" - 3M stack to be installed on 8 5/8" csg & left on for remainder of drilling. Stack to consist of annular BOP, blind ram BOP & one pipe ram BOP. Test BOP after setting 8 5/8" csg w/independent tester.

IN ABOVE SPACE DESCRIBE PROPOSED PROGRAM: If proposal is to deepen or plug back, give data on present productive zone and proposed new productive zone. If proposal is to drill or deepen directionally, give pertinent data on subsurface locations and measured and true vertical depths. Give blowout preventer program, if any.

24.

SIGNED

*R. L. Bradshaw*  
R. L. Bradshaw

TITLE Sr. Staff Env./Reg. Spec.

DATE 03-30-89

(This space for Federal or State office use)

PERMIT NO.

APPROVAL DATE

Orig. Signed by *R. L. Bradshaw*

APPROVED BY

TITLE AREA MANAGER  
CARLENE RESOURCE AREA

DATE

4-28-89

APPROVAL SUBJECT TO

GENERAL REQUIREMENTS AND

SPECIAL STIPULATIONS

\*See Instructions On Reverse Side

RECEIVED

MAY 1 1989

OCB  
HOBBS OFFICE

MEXICO OIL CONSERVATION COMMISSION  
WELL LOCATION AND ACREAGE DEDICATION PLAT

Form C-102  
Supersedes C-128  
Effective 1-1-65

All distances must be from the outer boundaries of the Section.

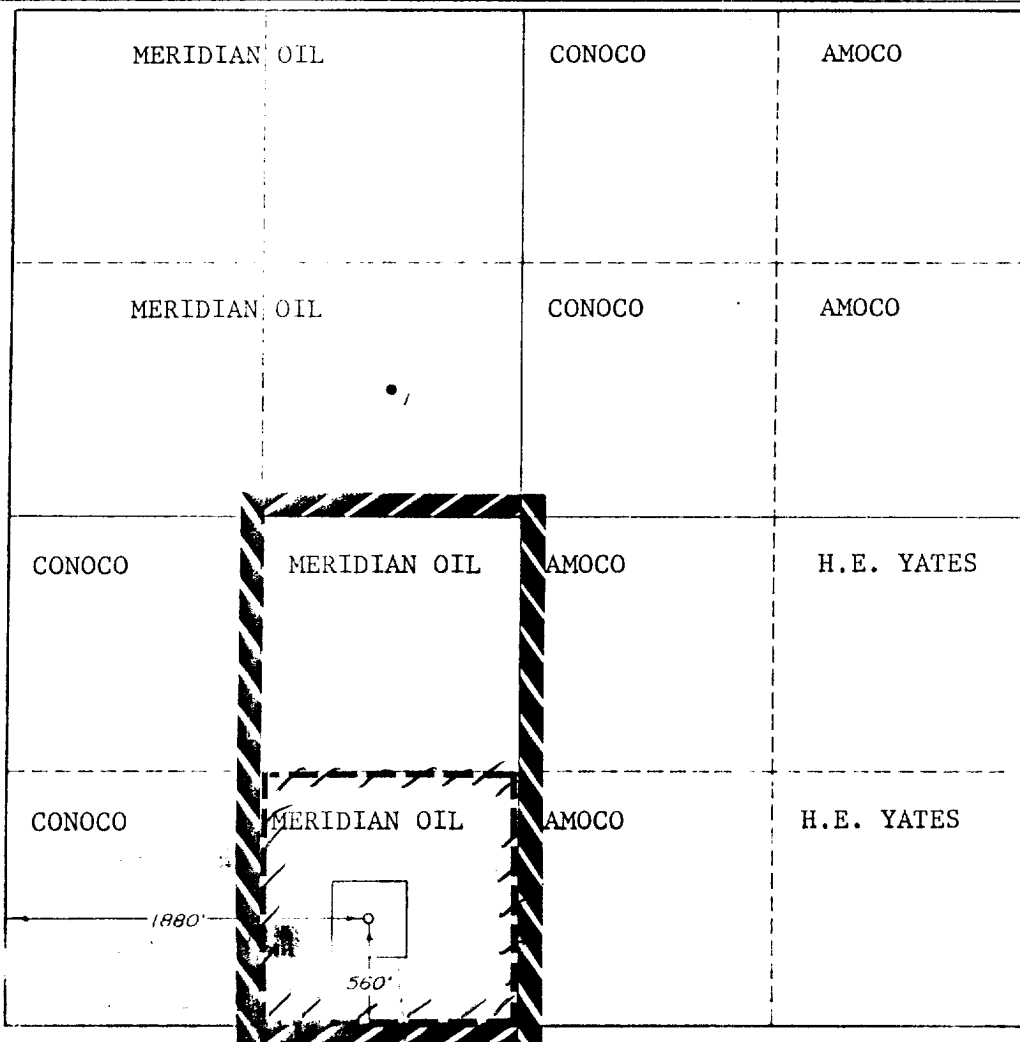
Operator <b>MERIDIAN OIL, INC.</b>			Lease <b>FEDERAL AF</b>		Well No. <b>2</b>
Grid Letter <b>N</b>	Section <b>8</b>	Township <b>18-SOUTH</b>	Range <b>32-EAST</b>	County <b>LEA</b>	
Actual Footage Location of Well: <div style="display: flex; justify-content: space-between;"> <span>560 feet from the <b>SOUTH</b> line and</span> <span>1880 feet from the <b>WEST</b> line</span> </div>					
Ground Level Elev. <b>3772'</b>	Producing Formation <b>WOLFCAMP</b>	Pool: <b><del>NORTH YOUNG</del> wildcat</b>		Dedicated Acreage: <b>40</b> Acres	

1. Outline the acreage dedicated to the subject well by colored pencil or hatchure marks on the plat below.
2. If more than one lease is dedicated to the well, outline each and identify the ownership thereof (both as to working interest and royalty).
3. If more than one lease of different ownership is dedicated to the well, have the interests of all owners been consolidated by communitization, unitization, force-pooling, etc?

☐ Yes    ☐ No    If answer is "yes," type of consolidation \_\_\_\_\_

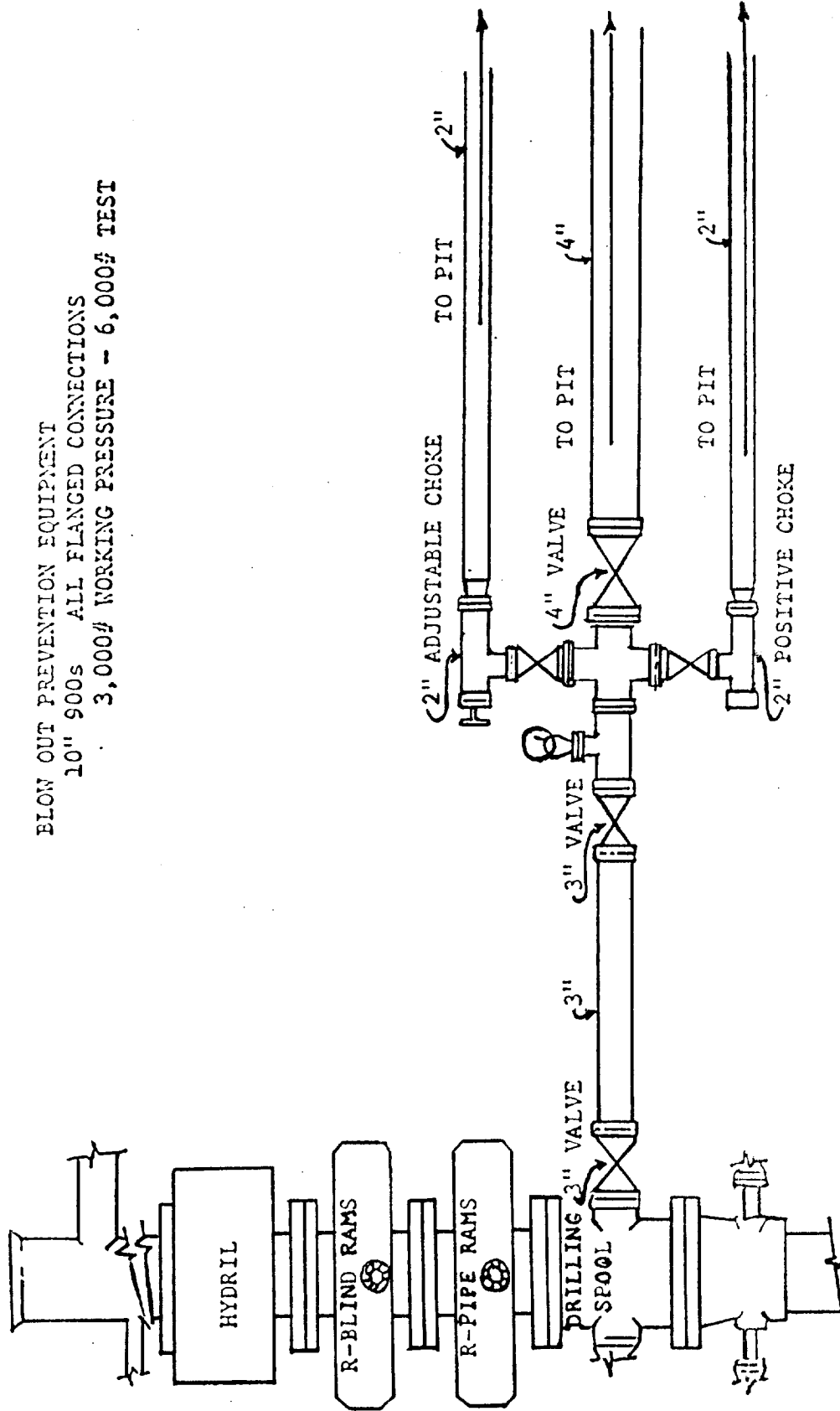
If answer is "no," list the owners and tract descriptions which have actually been consolidated. (Use reverse side of this form if necessary.) \_\_\_\_\_

No allowable will be assigned to the well until all interests have been consolidated (by communitization, unitization, forced-pooling, or otherwise) or until a non-standard unit, eliminating such interests, has been approved by the Commission.



<b>CERTIFICATION</b>	
I hereby certify that the information contained herein is true and complete to the best of my knowledge and belief.	
<i>Robert L. Bradshaw</i>	
Name	Robert L. Bradshaw
Position	Sr. Staff Env./Reg. Spec.
Company	Meridian Oil Inc.
Date	21 March 1989
I hereby certify that the well location shown on this plat was plotted from field notes of actual surveys made by me or under my supervision, and that the same is true and correct to the best of my knowledge and belief.	
Date Surveyed	FEBRUARY 27, 1989
Registered Professional Engineer and/or Land Surveyor	
<i>[Signature]</i>	
19.0	

BLOW OUT PREVENTION EQUIPMENT  
 10" 900s ALL FLANGED CONNECTIONS  
 3,000# WORKING PRESSURE - 6,000# TEST



ELF

Recd 7-3-89

RECEIVED

MAY 1 1989

OCD  
HOBBS OFFICE