



STATE OF NEW MEXICO  
ENERGY AND MINERALS DEPARTMENT  
OIL CONSERVATION DIVISION  
HOBBS DISTRICT OFFICE

6-27-89

GARREY CARRUTHERS  
GOVERNOR

POST OFFICE BOX 1980  
HOBBS, NEW MEXICO 88241-1980  
(505) 393-6161

OIL CONSERVATION DIVISION  
P. O. BOX 2088  
SANTA FE, NEW MEXICO 87501

RE: Proposed:

MC

DHC

NSL ☒

NSP

SWD

WFX

PMX

amendment

Gentlemen:

I have examined the application for the: #21-0' 35-17-34

Phillips Pet. Co. M. E. Hale #20-N 35-17-34  
Operator Lease & Well No. Unit S-T-R

and my recommendations are as follows:

OK

Yours very truly,

Jerry Sexton  
Supervisor, District

/ed



**PHILLIPS PETROLEUM COMPANY**

ODESSA, TEXAS 79762  
4001 PENBROOK

June 23, 1989

EXPLORATION AND PRODUCTION GROUP

Request for Revision of  
Administrative Order NSL-2662  
and NSL-2663 for Location Change  
M. E. Hale Lease, Well Nos. 20 and 21  
Vacuum Grayburg/ San Andres Pool  
Lea County, New Mexico

State of New Mexico  
Energy, Minerals and Natural Resources Dept.  
Oil Conservation Division  
P. O. Box 2088  
Santa Fe, New Mexico 87501-2088

Attn: William J. LeMay  
Director

Gentlemen:

Administrative approval, provided by Statewide Rule 104F (III)(IV), is requested to permit drilling of the subject wells at unorthodox locations. Previous approval for the unorthodox locations of the wells was granted June 5, 1989 by Administrative Order NSL-2662 and NSL-2663. The locations of the proposed wells had been changed to center each well in a more efficient production/injection pattern. Revised plats are included herein.

Texaco, Inc., as offset operator, has been notified by copy of this application on this date.

Your early consideration is appreciated. Contact me at (915) 367-1488 if you have any questions.

Your very truly,

*Larry M. Sanders by ap*

Larry M. Sanders, Supervisor  
Regulation and Proration

LMS:AP

Attachment

Submit to Appropriate  
District Office  
State Lease - 4 copies  
Fee Lease - 3 copies

State of New Mexico  
Energy, Minerals and Natural Resources Department

Form C-102  
Revised 1-1-89

OIL CONSERVATION DIVISION

DISTRICT I  
P.O. Box 1980, Hobbs, NM 88240

P.O. Box 2088

Santa Fe, New Mexico 87504-2088

DISTRICT II  
P.O. Drawer DD, Artesia, NM 88210

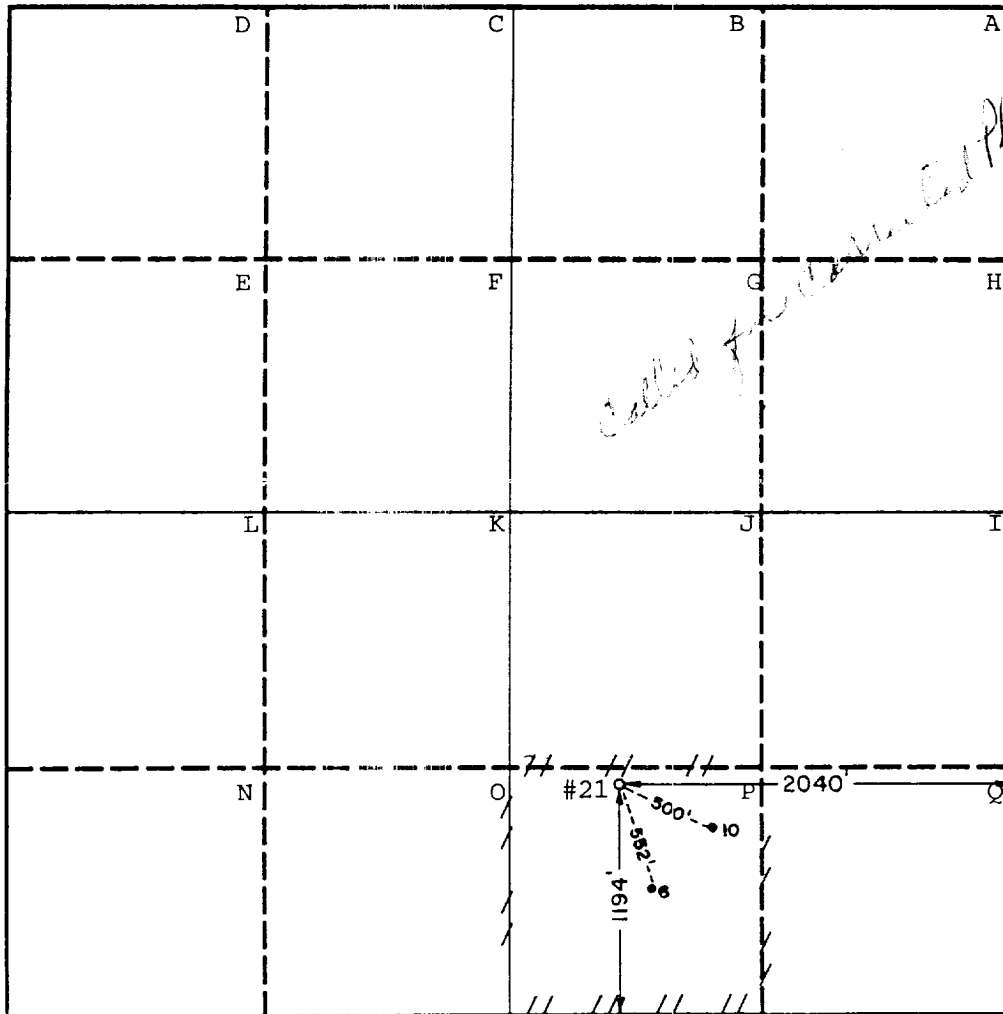
DISTRICT III  
1000 Rio Brazos Rd., Aztec, NM 87410

WELL LOCATION AND ACREAGE DEDICATION PLAT

All Distances must be from the outer boundaries of the section

Operator Phillips Petroleum Co.		Lease M.E. Hale		Well No. 21
Unit Letter O	Section 17	Township 35-South	Range 34 East	County Lea
Actual Footage Location of Well: 1194 feet from the south line and 2040 feet from the east line				
Ground level Elev. 4014.8'	Producing Formation Grayburg/San Andres	Pool Vacuum Grayburg/San Andres	Dedicated Acreage: 40 Acres	

1. Outline the acreage dedicated to the subject well by colored pencil or hatchure marks on the plat below.
2. If more than one lease is dedicated to the well, outline each and identify the ownership thereof (both as to working interest and royalty).
3. If more than one lease of different ownership is dedicated to the well, have the interest of all owners been consolidated by communitization, unitization, force-pooling, etc.?  
☐ Yes ☐ No If answer is "yes" type of consolidation \_\_\_\_\_  
If answer is "no" list the owners and tract descriptions which have actually been consolidated. (Use reverse side of this form if necessary.)  
No allowable will be assigned to the well until all interests have been consolidated (by communitization, unitization, forced-pooling, or otherwise) or until a non-standard unit, eliminating such interest, has been approved by the Division.



OPERATOR CERTIFICATION

I hereby certify that the information contained herein is true and complete to the best of my knowledge and belief.

*L. M. Sanders by ap*  
Signature

L. M. Sanders

Printed Name

Regulation & Proration Supv.

Position

Phillips Petroleum Company

Company

June 19, 1989

Date

SURVEYOR CERTIFICATION

I hereby certify that the well location shown on this plat was plotted from field notes of actual surveys made by me or under my supervision, and that the same is true and correct to the best of my knowledge and belief.

Date Surveyed

June

Signature of Professional Surveyor

NO. 676

Certified

3239



STATE OF NEW MEXICO

ENERGY, MINERALS AND NATURAL RESOURCES DEPARTMENT  
OIL CONSERVATION DIVISION

Received

JUN 08 1989

P.E.N. Regulatory Section

GARREY CARRUTHERS  
GOVERNOR

POST OFFICE BOX 2088  
STATE LAND OFFICE BUILDING  
SANTA FE, NEW MEXICO 87504  
(505) 827-5800

June 5, 1989

Phillips Petroleum Company  
4001 Penbrook  
Room 401  
Odessa, TX 79762

Attention: L.M. Sanders  
Supervisor, Regulation and Proration

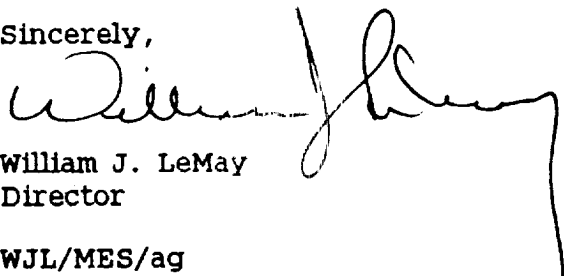
Administrative Order NSL-2663

Dear Mr. Sanders:

Reference is made to your application of May 25, 1989 for a non-standard oil well location to permit the completion of an efficient production/injection pattern within a secondary recovery project for your M.E. Hale Well No. 21 to be located 1000 feet from the South line and 2240 feet from the East line (Unit O) of Section 35, Township 17 South, Range 34 East, NMPM, Vacuum Grayburg San Andres Pool, Phillips Hale-Mable Vacuum Grayburg San Andres Pressure Maintenance Project Area, Lea County, New Mexico. Said well to be dedicated to the existing standard 40-acre oil spacing and proration unit comprising the SW/4 SE/4 of said Section 35.

By the authority granted me under the provisions of General Rule 104 F(I) and Rule 9 of the Special Rules and Regulations for the Phillips Hale-Mable Vacuum Grayburg San Andres Pressure Maintenance Project as promulgated by Division Order No. R-7103, as amended, the above-described unorthodox oil well location is hereby approved.

Sincerely,

  
William J. LeMay  
Director

WJL/MES/ag

cc: Oil Conservation Division - Hobbs  
NM Oil and Gas Engineering Committee - Hobbs  
NM State Land Office - Santa Fe

RECEIVED

MAY 26 1964

OCB  
MOBBS OFFICE