

Submit to Appropriate  
District Office  
State Lease - 6 copies  
Fee Lease - 5 copies

DISTRICT I  
P.O. Box 1980, Hobbs, NM 88240

DISTRICT II  
P.O. Drawer DD, Artesia, NM 88210

DISTRICT III  
1000 Rio Brazos Rd., Aztec, NM 87410

State of New Mexico  
Energy, Minerals and Natural Resources Department  
**OIL CONSERVATION DIVISION**  
P.O. Box 2088  
Santa Fe, New Mexico 87504-2088

API NO. (assigned by OCD on New Wells)  
30-025 30611

5. Indicate Type of Lease  
STATE ☒ FEE ☐

6. State Oil & Gas Lease No.  
B-2317

7. Lease Name or Unit Agreement Name  
M. E. Hale

8. Well No.  
22

9. Pool name or Wildcat  
Vacuum Gb/SA

**APPLICATION FOR PERMIT TO DRILL, DEEPEN, OR PLUG BACK**

1a. Type of Work:  
DRILL ☒ RE-ENTER ☐ DEEPEN ☐ PLUG BACK ☐  
SINGLE ZONE ☒ MULTIPLE ZONE ☐

b. Type of Well:  
OIL WELL ☒ GAS WELL ☐ OTHER ☐

2. Name of Operator  
Phillips Petroleum Company

3. Address of Operator  
4001 Penbrook Street, Odessa, Texas 79762

4. Well Location  
Unit Letter N : 650 Feet From The south Line and 2630 Feet From The west  
Section 35 Township 17-S Range 34-E NMPM

10. Proposed Depth  
4900'

11. Formation  
Grayburg-San Andres

13. Elevations (Show whether DF, RT, GR, etc.)  
4018.5' GR unprepared

14. Kind & Status Plug. Bond  
Blanket

15. Drilling Contractor  
Will advise later

16. Approx. Date Work will start  
Upon approval

PROPOSED CASING AND CEMENT PROGRAM				SACKS OF CEMENT		EST. TO SURF
17.	SIZE OF HOLE	SIZE OF CASING	WEIGHT PER FOOT	SETTING DEPTH		
	17-1/2"	13-3/8"	54.5# J-55 ST&C	1590'	1500 sx "C", 2% CaCl	
	11"	8-5/8"	24# J-55 ST&C	3200'	800 sx "C", 5% salt*	
	7-7/8"	5-1/2"	14# J-55 ST&C	4800'	Caliper volume + 30% excess if 8-5/8" li set; if 8-5/8" liner se circulate to 1500' usin volume + 30% excess. not circulated to surf erature survey will b	

\*After drilling 7-7/8" hole to  $\pm 4800'$ , if water flow is encountered, will COOH  
bit and ream out hole w/11" bit from  $\pm 1600'$  to 3200'. 8-5/8" intermediate lin  
set at 3200' with 800 sx of Class "C" + 5% salt, circulated to liner top.

Use mud additives as required for control.  
BOP Equip: Series 900, 3000# WP (See attached schematic - Fig. 7-9 or 7-10)

IN ABOVE SPACE DESCRIBE PROPOSED PROGRAM: IF PROPOSAL IS TO DEEPEN OR PLUG BACK, GIVE DATA ON PRESENT PRODUCTIVE ZONE AND PRO  
ZONE. GIVE BLOWOUT PREVENTER PROGRAM, IF ANY.

I hereby certify that the information above is true and complete to the best of my knowledge and belief.

SIGNATURE L. M. Sanders TITLE Regulation & Proration Supervisor DATE

TYPE OR PRINT NAME L. M. Sanders ORIGINAL SIGNED BY JERRY SEXTON DISTRICT I SUPERVISOR TITLE

(This space for State Use) APPROVED BY \_\_\_\_\_ TITLE \_\_\_\_\_  
CONDITIONS OF APPROVAL, IF ANY: \_\_\_\_\_

Permit Expires 6 Months Fr  
Date Unless Drilling Under

## OIL CONSERVATION DIVISION

**DISTRICT I**  
P.O. Box 1980, Hobbs, NM 88240

P.O. Box 2088  
Santa Fe, New Mexico 87504-2088

DISTRICT II  
P.O. Drawer DD, Artesia, NM 88210

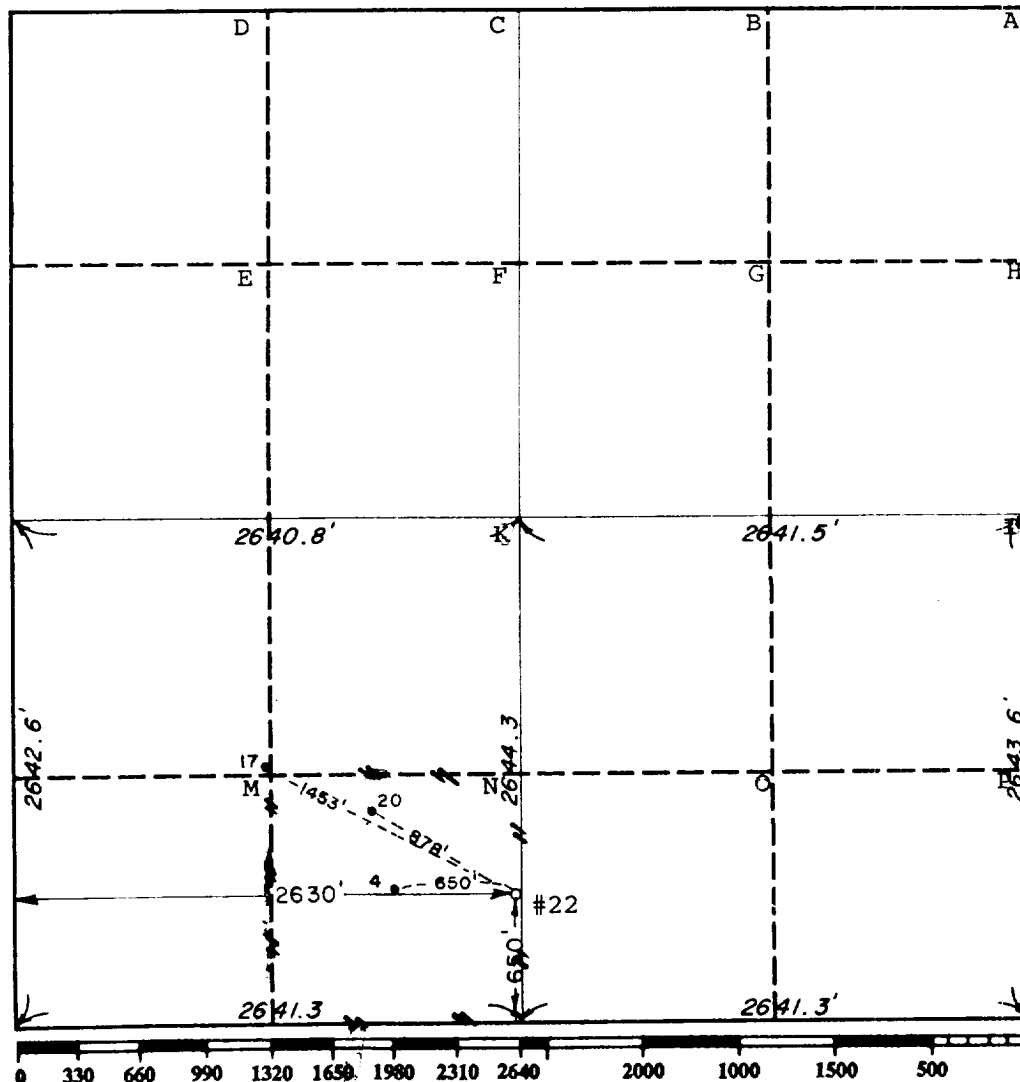
DISTRICT III  
1000 Rio Brazos Rd., Aztec, NM 87410

## WELL LOCATION AND ACREAGE DEDICATION PLAT

**All Distances must be from the outer boundaries of the section**

Operator Phillips Petroleum Company		Lease M.E. Hale		Well No. 22
Unit Letter N	Section 35	Township 17 South	Range 34 East NMPM	County Lea
Actual Footage Location of Well:				
650 feet from the South line and		2630 feet from the West line		
Ground level Elev. 4018.5	Producing Formation Grayburg-San Andres		Pool Vacuum Grayburg-San Andres	Dedicated Acreage: 40 Acres

1. Outline the acreage dedicated to the subject well by colored pencil or hatchure marks on the plat below.
2. If more than one lease is dedicated to the well, outline each and identify the ownership thereof (both as to working interest and royalty).
3. If more than one lease of different ownership is dedicated to the well, have the interest of all owners been consolidated by communitization, unitization, force-pooling, etc.?
- ☐ Yes      ☐ No      If answer is "yes" type of consolidation \_\_\_\_\_
- If answer is "no" list the owners and tract descriptions which have actually been consolidated. (Use reverse side of this form if necessary.) \_\_\_\_\_
- No allowable will be assigned to the well until all interests have been consolidated (by communitization, unitization, forced-pooling, or otherwise) or until a non-standard unit, eliminating such interest, has been approved by the Division.



### OPERATOR CERTIFICATION

I hereby certify that the information contained herein is true and complete to the best of my knowledge and belief.

Signature J. M. Sanders

L. M. Sanders  
Printed Name

Regulation & Proration Supv.
Position

Phillips Petroleum Company
Company

May 10, 1989

### SURVEYOR CERTIFICATION

I hereby certify that the well location shown on this plat was plotted from field notes of actual surveys made by me or under my supervision, and that the same is true and correct to the best of my knowledge and belief.

Date Surveyed

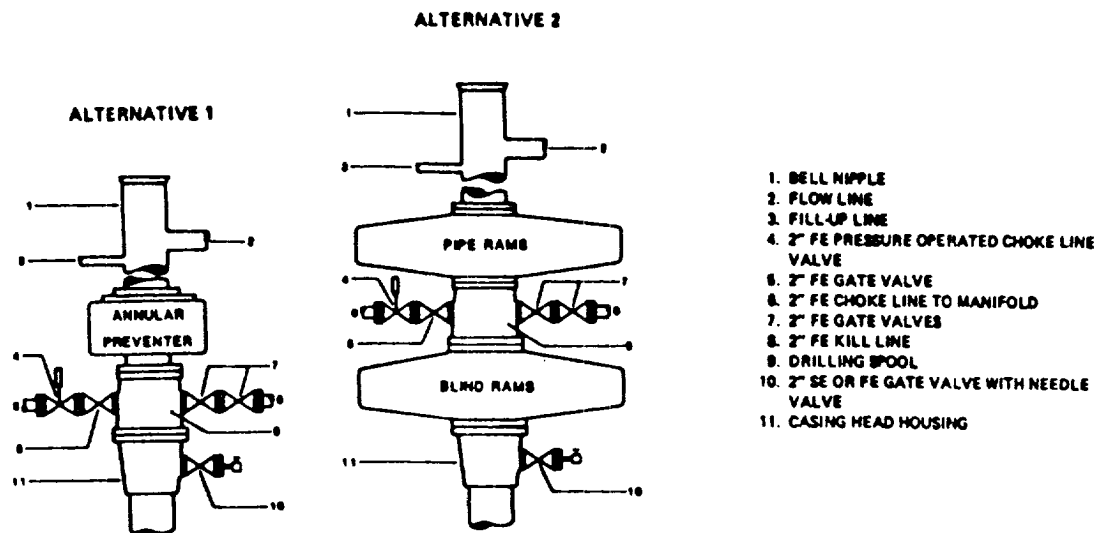
1889

Signature & Seal of Professional Surveyor

REGISTERED PROFESSIONAL ENGINEER  
AND LAND SURVEYOR

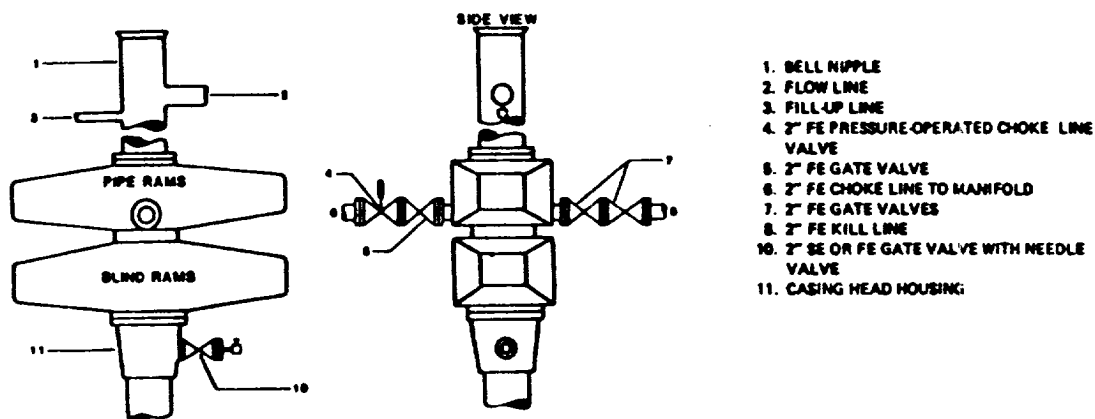
*John W. West*

Permit No. JOHN W. WEST 676  
DONALD J. EDSON, 3239



NOTE: THE DRILLING SPOOL MAY BE LOCATED BELOW BOTH SETS OF RAMS IF A DOUBLE PREVENTER IS USED AND IT DOES NOT HAVE SUITABLE OUTLETS BETWEEN RAMS

**Figure 7-9. Standard Hydraulic Blowout Preventer Assembly  
(2 M or 3 M Working Pressure) Alternative 1**



**Figure 7-10. Standard Hydraulic Blowout Preventer Assembly  
(2 M or 3 M Working Pressure) Alternative 3 (without Drilling Spool)**

18-41-6-207  
173

RECEIVED

MAY 12 1989

OCD  
HOBBS OFFICE