

Submit to Appropriate  
District Office  
State Lease - 4 copies  
Fee Lease - 3 copies

Enr Minerals and Natural Resources Department

Revised 1-1-89

# OIL CONSERVATION DIVISION

P.O. Box 2088  
Santa Fe, New Mexico 87504-2088

DISTRICT I  
P.O. Box 1980, Hobbs, NM 88240

DISTRICT II  
P.O. Drawer DD, Artesia, NM 88210

DISTRICT III  
1000 Rio Brazos Rd., Aztec, NM 87410

## WELL LOCATION AND ACREAGE DEDICATION PLAT

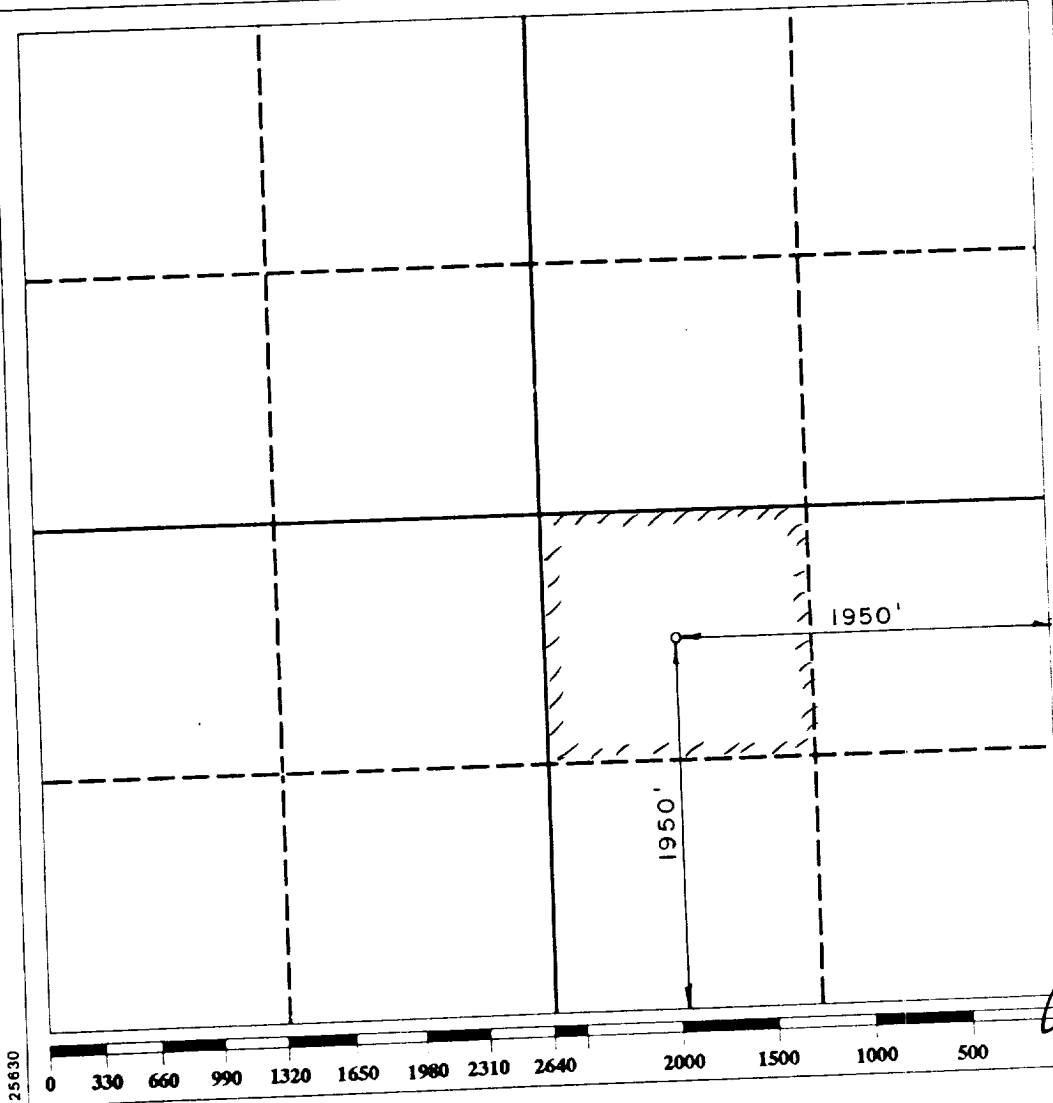
All Distances must be from the outer boundaries of the section

Operator HELMERICH & PAYNE, INC.		Lease R.E. GRAHAM 7		Well No. 2
Unit Letter J	Section 7	Township 18-S	Range 32-E NMPM	County LEA

Actual Footage Location of Well:

1950 feet from the SOUTH line and 1950 feet from the EAST line  
Ground level Elev. 3770.4  
Producing Formation Bone Spring  
Pool North Young Bone Spring  
Dedicated Acreage: 40 Acres

- Outline the acreage dedicated to the subject well by colored pencil or hachure marks on the plat below.
- If more than one lease is dedicated to the well, outline each and identify the ownership thereof (both as to working interest and royalty).
- If more than one lease of different ownership is dedicated to the well, have the interest of all owners been consolidated by communitization, unitization, force-pooling, etc.?  
☐ Yes ☐ No If answer is "yes" type of consolidation \_\_\_\_\_  
If answer is "no" list the owners and tract descriptions which have actually been consolidated. (Use reverse side of this form if necessary.)  
No allowable will be assigned to the well until all interests have been consolidated (by communitization, unitization, forced-pooling, or otherwise) or until a non-standard unit, eliminating such interest, has been approved by the Division.



### OPERATOR CERTIFICATION

I hereby certify that the information contained herein is true and complete to the best of my knowledge and belief.

Signature

Printed Name

JERRY B. PATTON

Position

DISTRICT PROD. SUPT.

Company

HELMERICH & PAYNE, INC.

Date

July 14, 1989

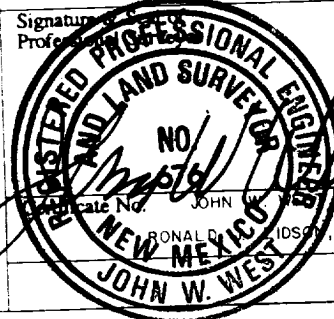
### SURVEYOR CERTIFICATION

I hereby certify that the well location shown on this plat was plotted from field notes of actual surveys made by me or under my supervision, and that the same is true and correct to the best of my knowledge and belief.

Date Surveyed

JUNE 29, 1989

Signature of Professional Surveyor



Associate No.

JOHN

676

RONALD C. JIDSON

3239

Rec'd 1-29-90

ELF

RECEIVED

JUL 19 1989

OCD  
MOBBS OFFICE